



národní
úložiště
šedé
literatury

Earth Observation for monitoring of regional food supplies deviations

Seidlová, Jana; Batrlová, Iva; Kvapil, Jiří
2020

Dostupný z <http://www.nusl.cz/ntk/nusl-432123>

Dílo je chráněno podle autorského zákona č. 121/2000 Sb.

Tento dokument byl stažen z Národního úložiště šedé literatury (NUŠL).

Datum stažení: 25.04.2024

Další dokumenty můžete najít prostřednictvím vyhledávacího rozhraní nusl.cz .

EO FOR MONITORING OF REGIONAL FOOD SUPPLIES DEVIATIONS



COVID-19
INSPIRE
HACKATHON
2020

FINAL STAGE

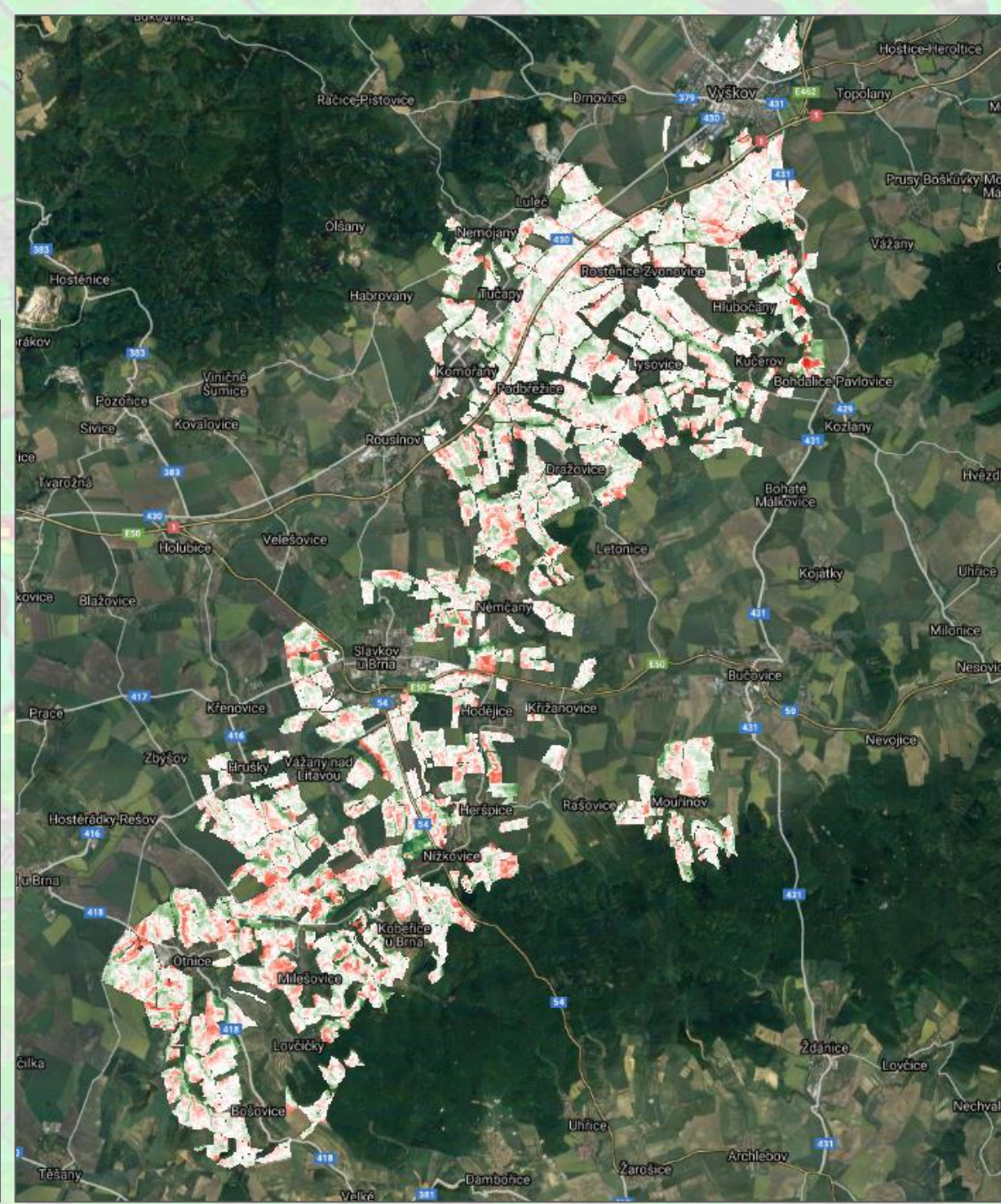
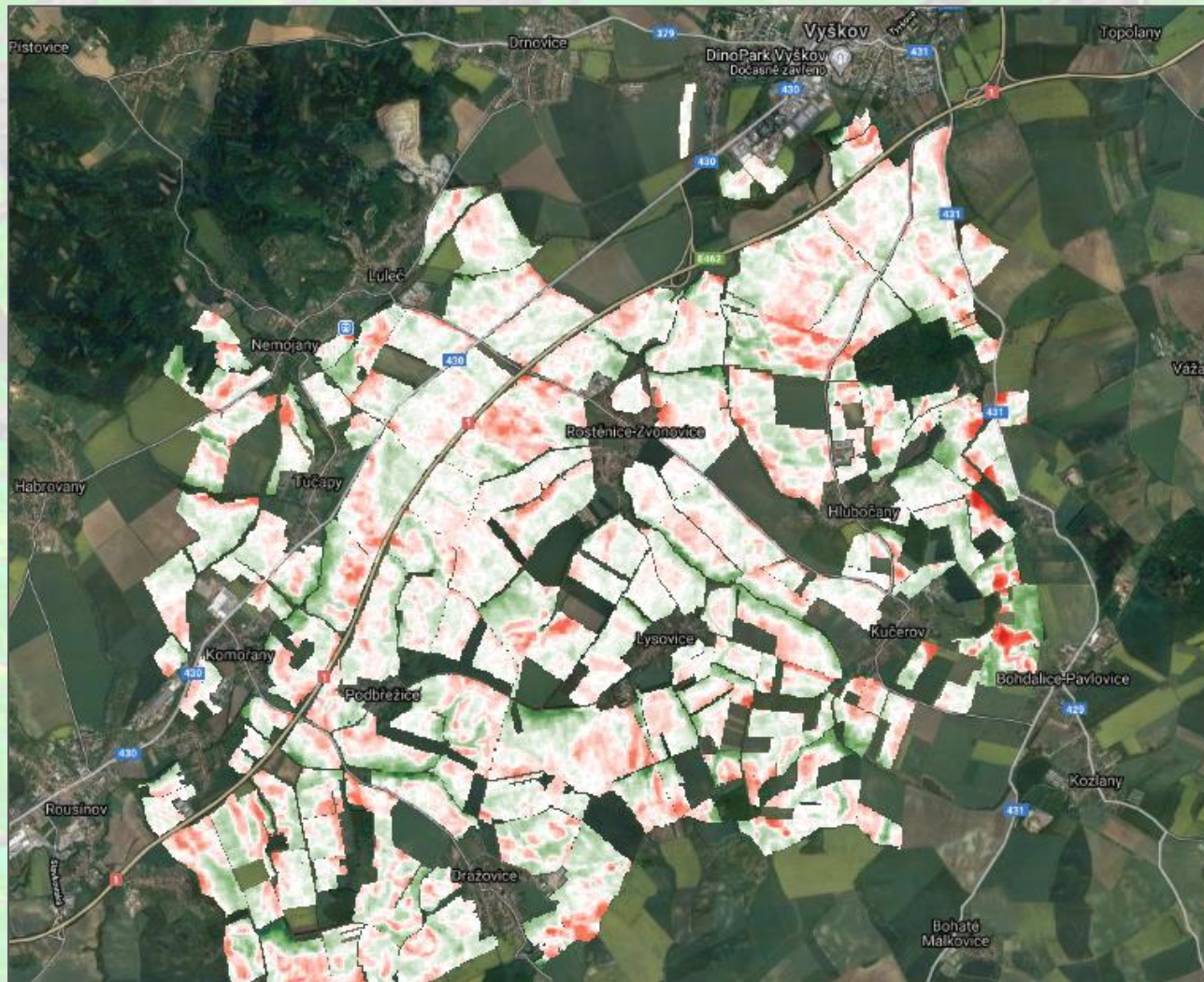
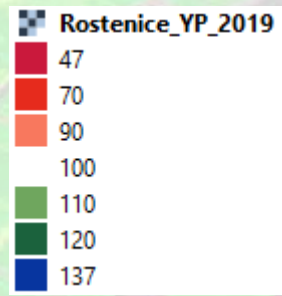
THURSDAY, NOVEMBER 19th 12:30 PM CET

GET AN OVERVIEW OF
THE HACKATHON RESULTS:
COVID19 AND AGRICULTURE
RESULTS FROM 13 DIFFERENT CHALLENGES
REWARDS CEREMONY AND CELEBRATION

The poster features an illustration of a person in a white shirt and blue pants standing on a rocket ship, holding a briefcase and a flag. The background is orange with a sun and clouds.

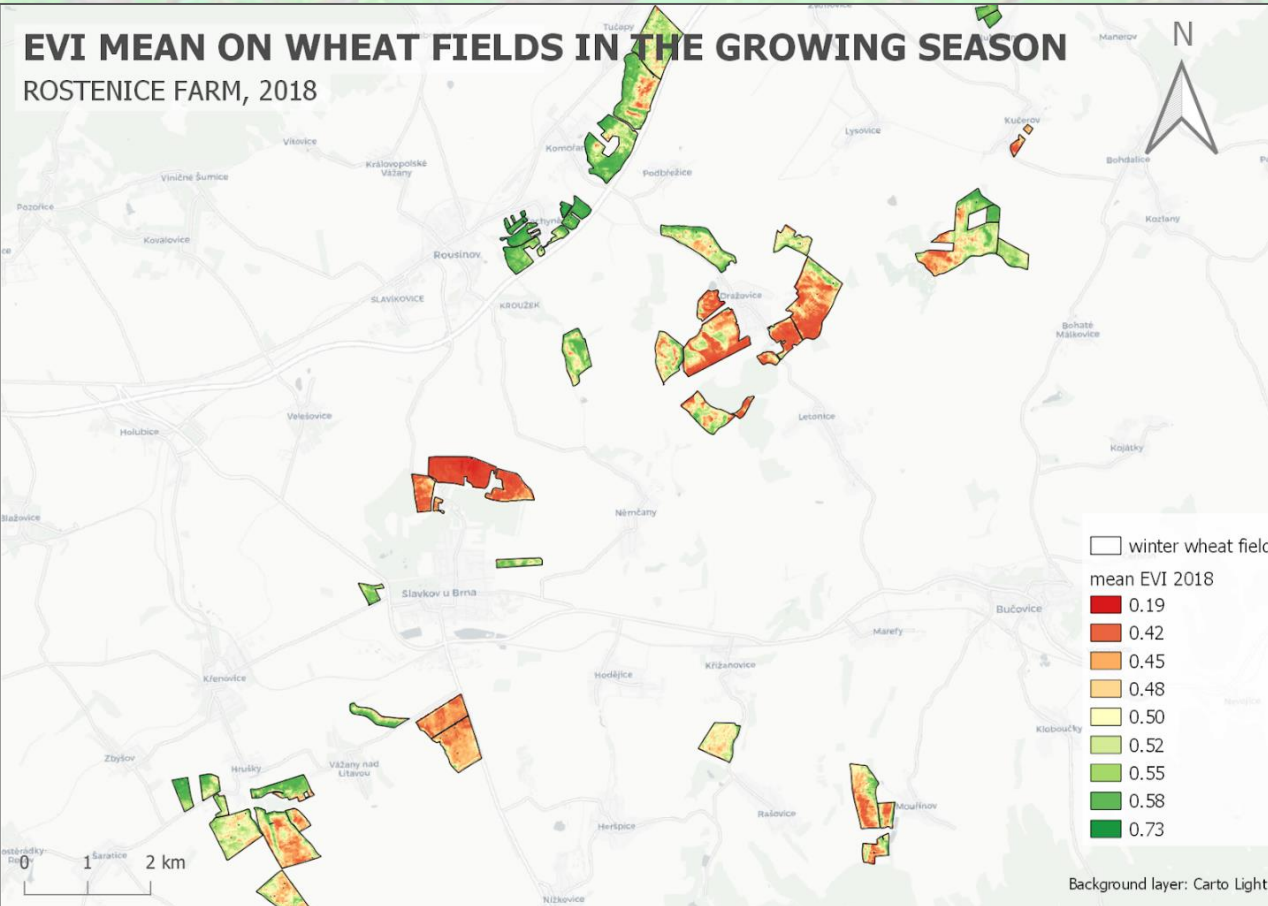
Heřman Šnevajs, Iva Batrlová, Jana Seidlová, Vojtěch Lukas, František Zadražil, Jiří Kvapil, Karel Charvát

YIELD PRODUCTION ZONES

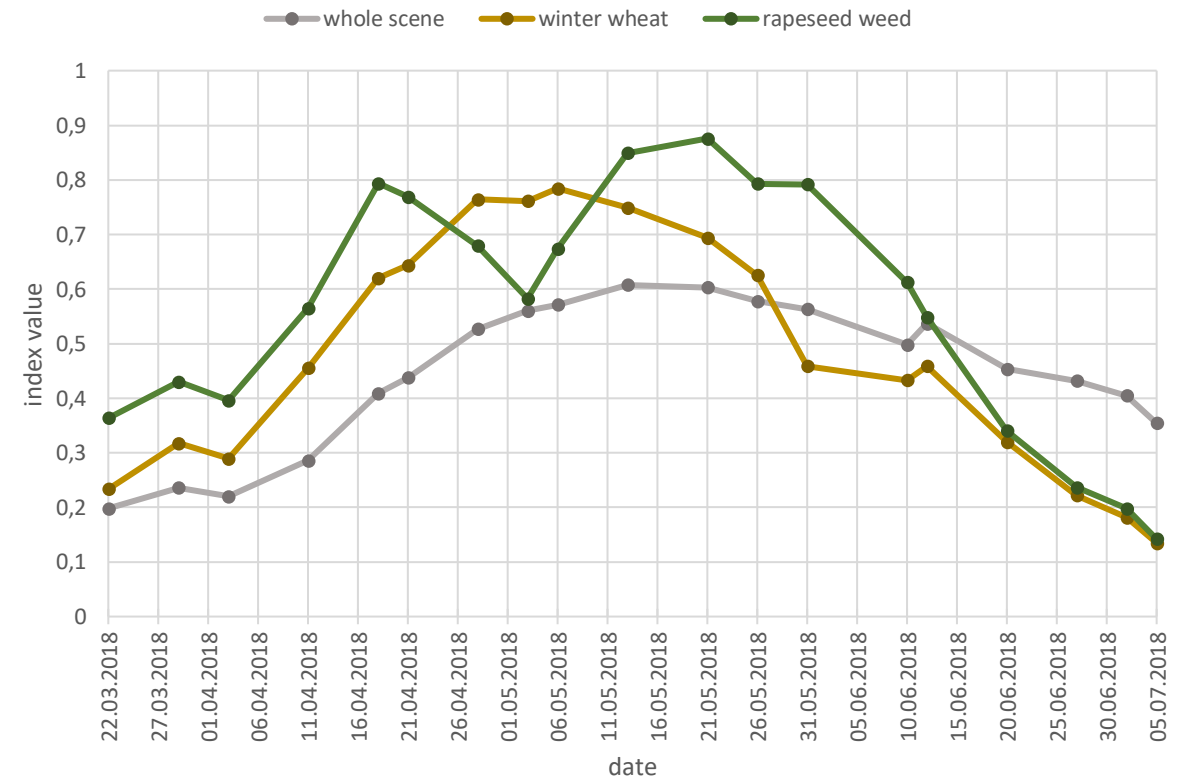


OUTPUTS – EVI MEAN

EVI MEAN ON WHEAT FIELDS IN THE GROWING SEASON
ROSTENICE FARM, 2018

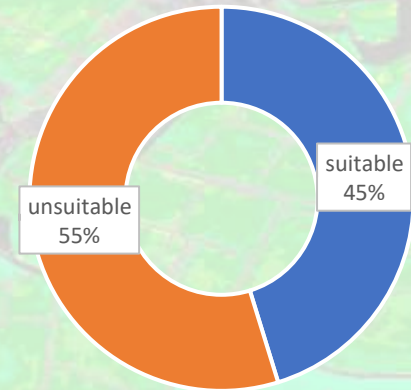


EVI DEVELOPMENT

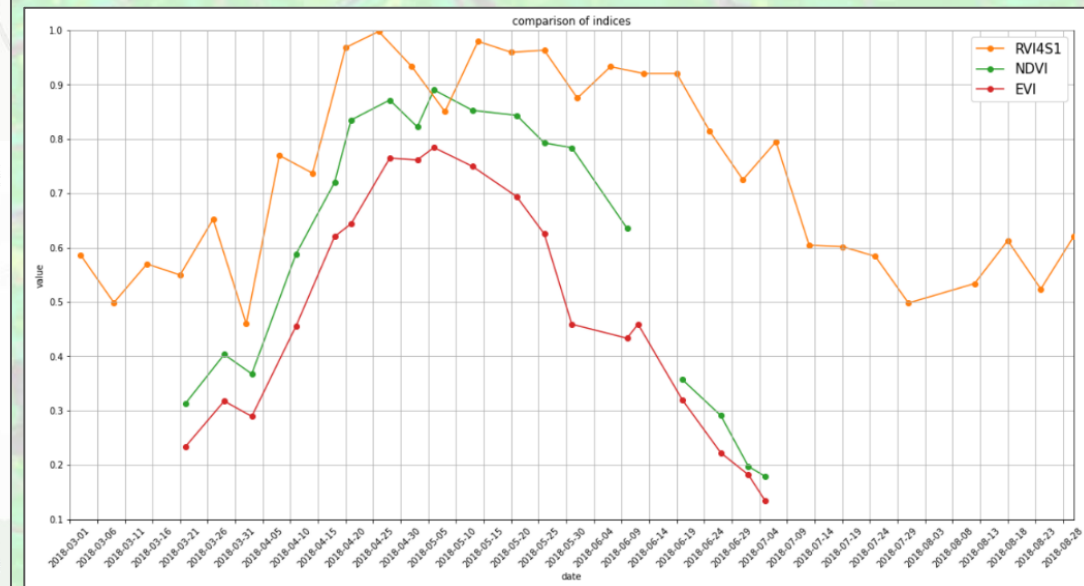
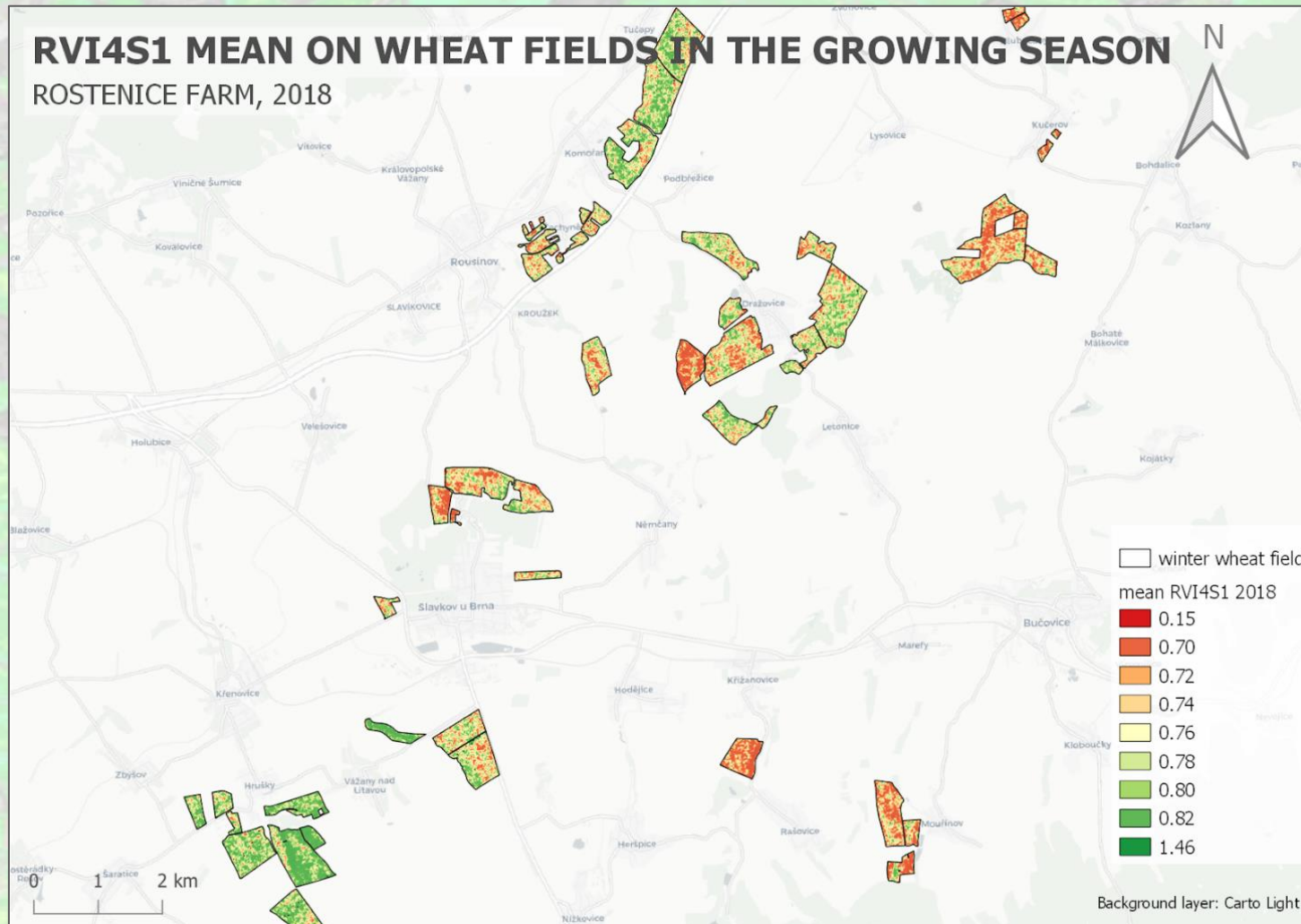


OUTPUTS – SENTINEL-1

Sentinel-2 images during growing season in 2018

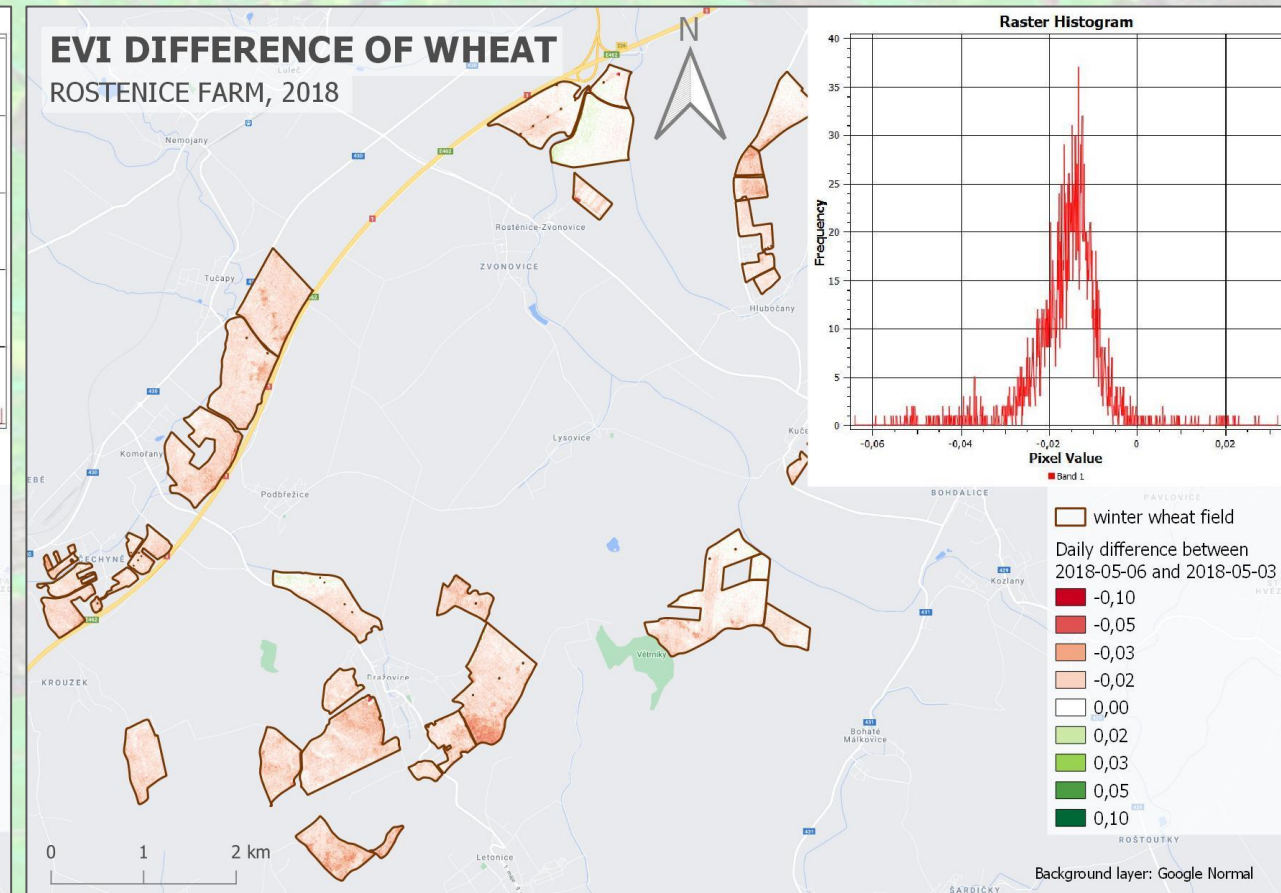
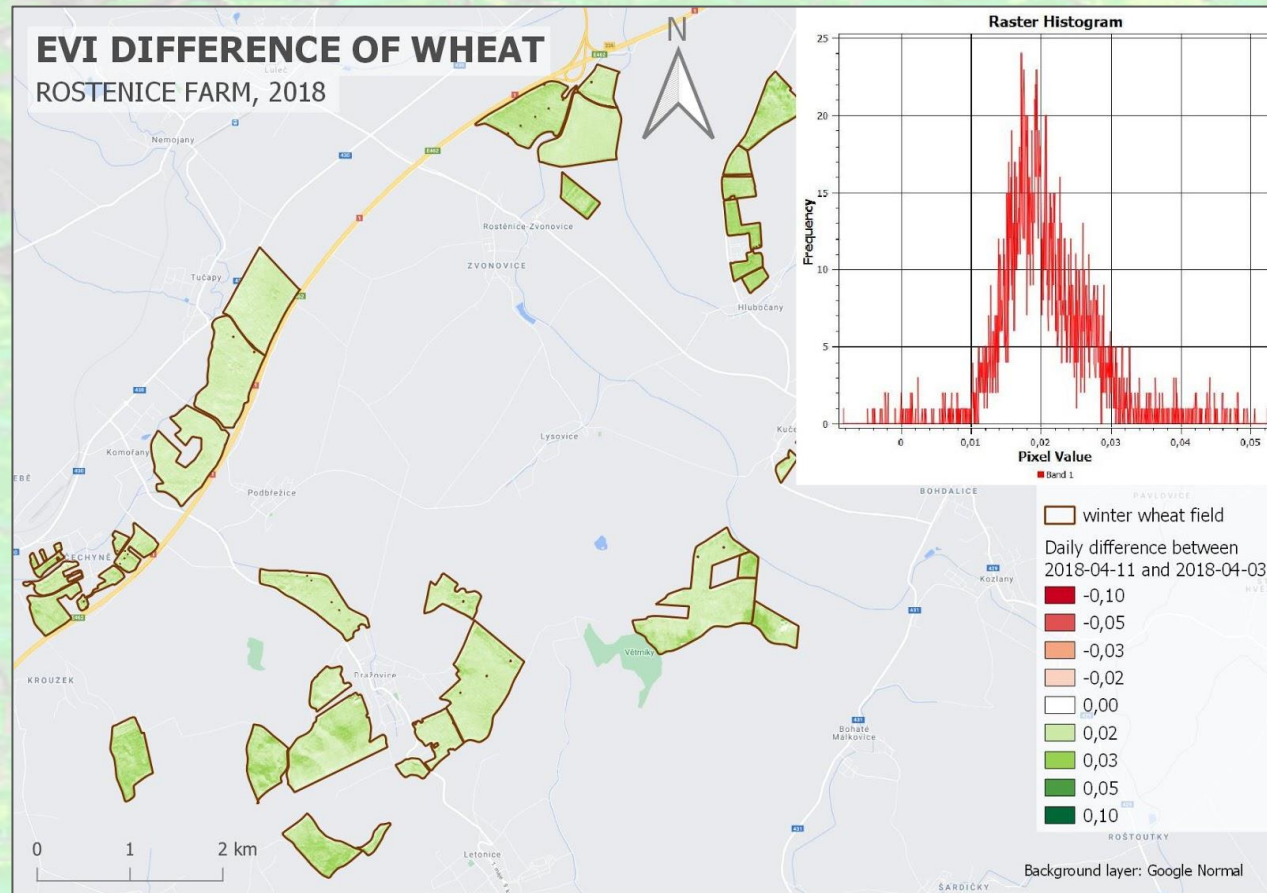


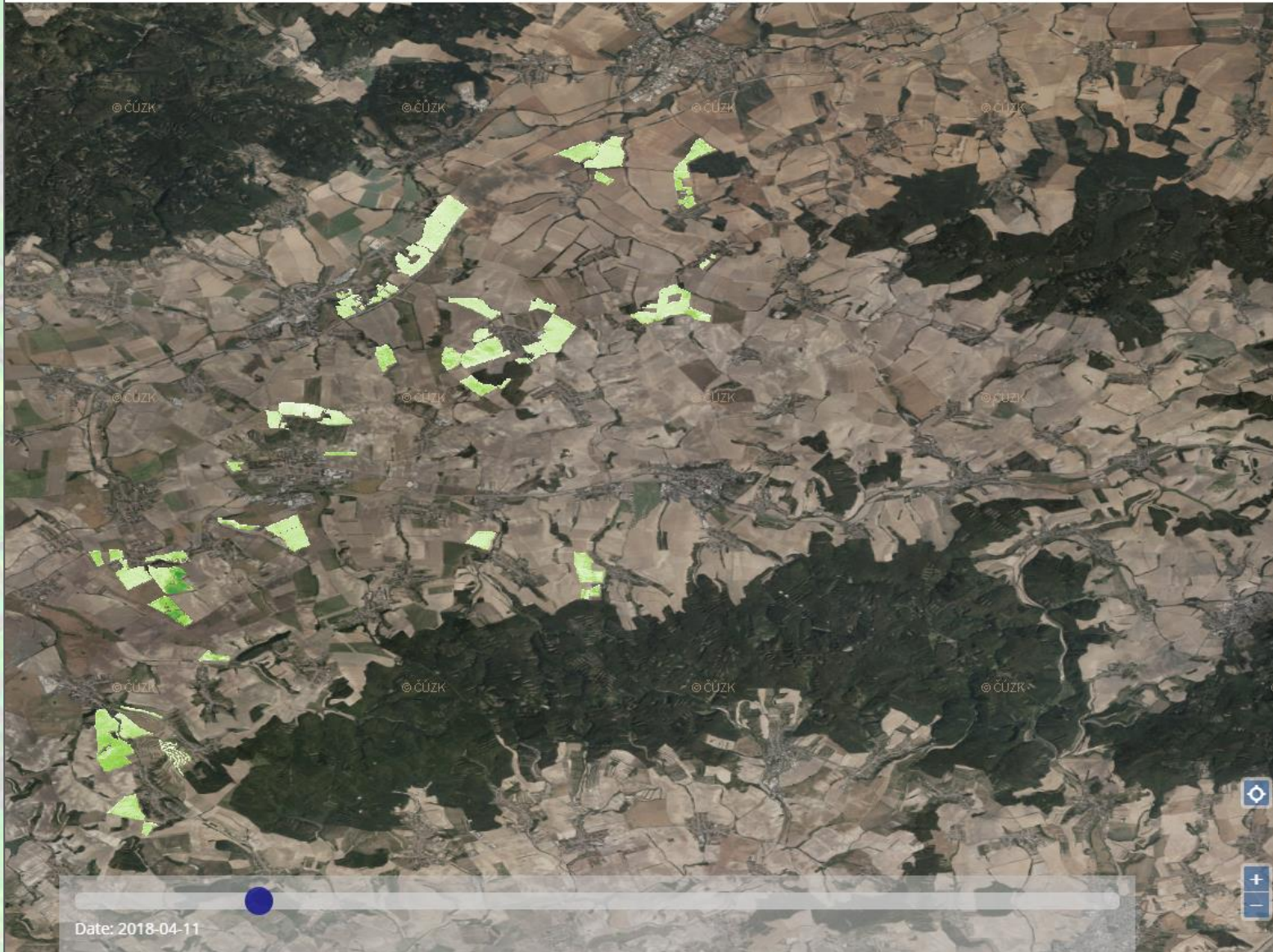
RVI4S1 MEAN ON WHEAT FIELDS IN THE GROWING SEASON
ROSTENICE FARM, 2018



OUTPUTS – DIFFERENCE LAYERS

$$D = \frac{EVI_{d1} - EVI_{d2}}{\Delta d}$$





Legend

Filter:

EVI index difference

-0,10
-0,05
-0,03
-0,02
0,00
0,02
0,03
0,05
0,10

↻



COVID-19
INSPIRE
HACKATHON
2020

#11

**EO FOR MONITORING OF
REGIONAL FOOD SUPPLIES
DEVIATIONS**

Heřman ŠNEVAJS

snevajs@lesprojekt.cz