



národní
úložiště
šedé
literatury

ABC: Amsterdam Blended Collections

Koster, Lukas
2018

Dostupný z <http://www.nusl.cz/ntk/nusl-380918>

Dílo je chráněno podle autorského zákona č. 121/2000 Sb.

Licence Creative Commons Uveďte původ-Neužívejte komerčně-Nezpracovávejte 4.0

Tento dokument byl stažen z Národního úložiště šedé literatury (NUŠL).

Datum stažení: 27.04.2024

Další dokumenty můžete najít prostřednictvím vyhledávacího rozhraní nusl.cz .



ABC: Amsterdam Blended Collections

The Local Amsterdam Cultural Heritage Linked Open Data Network

Lukas Koster
Library of the University of Amsterdam

ELAG 2018 Prague

Linking libraries to the real world

a tragicomedy in two acts

Ad Aerts
sArte.nl Foundation
<http://sarte.nl/>
@adaerts

Lukas Koster
Library Systems Coordinator
Library of the University of Amsterdam
<http://www.uva.uva.nl>
@lukask

ELAG2011 - Prague - May 25, 2011



Lukas Koster as *The Linker*
Ad Aerts as *The Nerd*



ABC

- ≡ The Context
- ≡ The Project
- ≡ Experiences
- ≡ Takeaways



The Context

City of Amsterdam Archaeological sites and historic maps and buildings

Legend

Opacityslider [red bar]

Timeanimation [play button]

- Historic building
Build between 1250-1800. Move the timeslider!
- Religion
- Public
- Production
- Military
- Archaeological sites
- Cesspits
- Water soils

Historical maps
Move the opacityslider

- Cornelis Anthonisz (1544)
- Jacob van Deventer (rond 1560)
- Gerred de Broen (rond 1774)
- Topografische Militaire Kaart Amsterdam (1860)
- Buurtatlas van Loman (1876-1903)

[Read the explanation](#)

[More Maps Amsterdam](#)

[Nederlands](#)



Project Goal

Create a linked open data infrastructure
for AdamNet member institutions collections
on the topic of "*Amsterdam*"

AdamNet Foundation

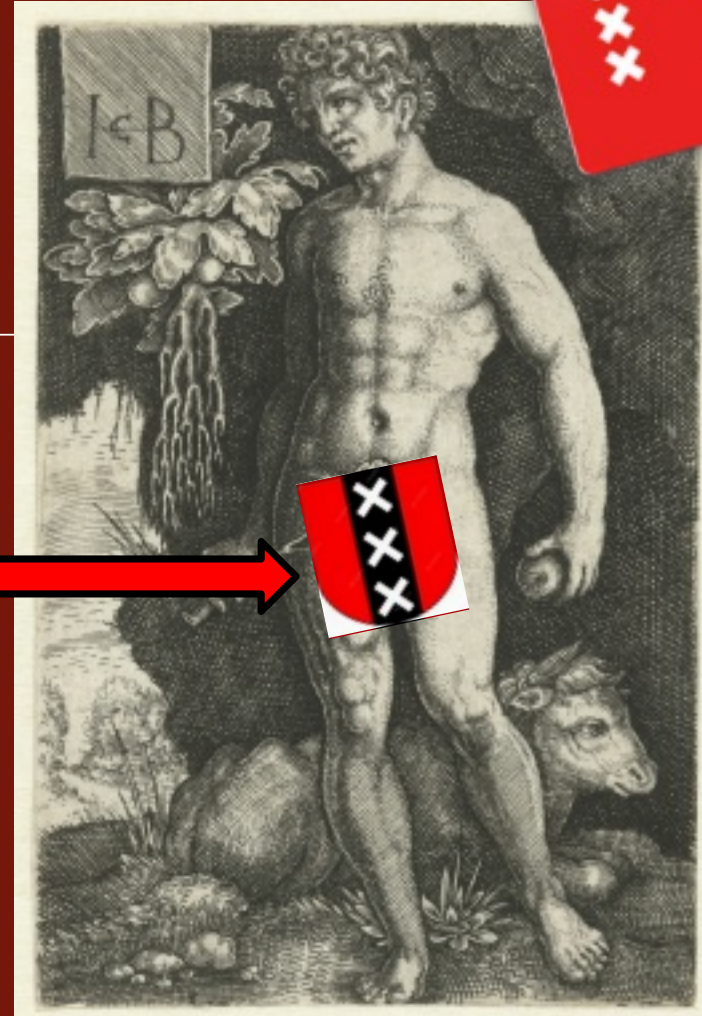
≡ "Adam" = short for "*Amster***DAM**"
≡ Amsterdam coat of arms

≡ <http://www.adamnet.nl/>

≡ Originally collaboration of Amsterdam based libraries

≡ Mutual lending/common library card

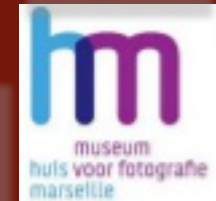
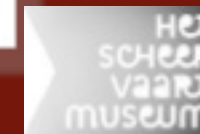
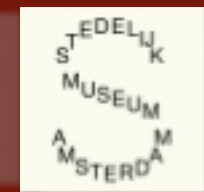
≡ Shared group catalogue: <http://adamnet.worldcat.org>



AdamNet 33 member institutions



- Public libraries
- Higher Education libraries
- Museum libraries
- Archive libraries
- Documentation centers
- Special libraries

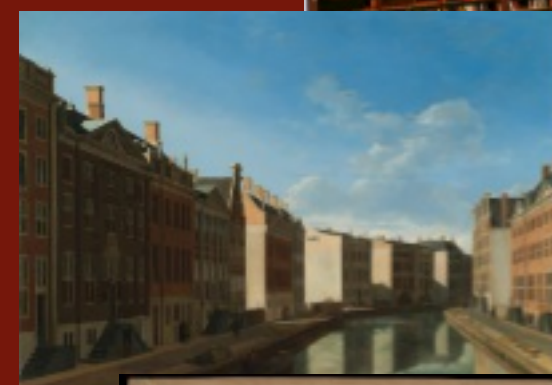


Gradual broadening of focus

Library
collaboration



CC BY-NC-ND Rijksmuseum/flickr



Cultural heritage connections

Pica Foundation Grant 2017



- ≡ Funding needed for
 - ≡ Project management
 - ≡ External project staff
 - ≡ Infrastructure
 - ≡ Website
 - ≡ Showcase applications

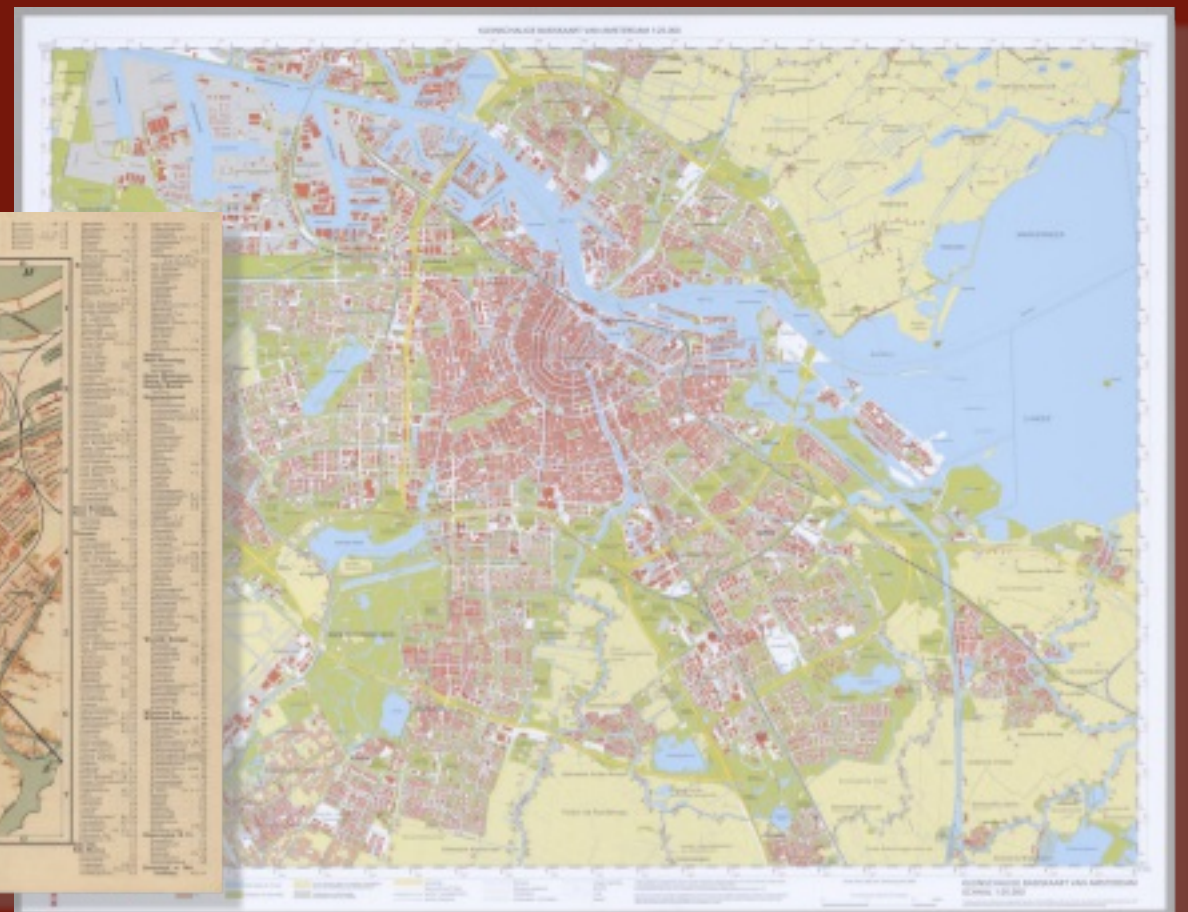


- ≡ Grant for one year September 2017 - August 2018
- ≡ Without grant, no project!

“ This project was realized with the support of Stichting Pica, the organization that promotes scientific and public information provision by, among other things, financing projects. More information about Stichting Pica can be obtained from the secretary of Stichting Pica. ”

The Project

"The Story of Amsterdam"





Project Goal

Create a linked open data infrastructure
for AdamNet member institutions collections
on the topic of "*Amsterdam*"

Data Only!

And some proof of
concept apps

Target audiences

- ≡ Researchers
- ≡ Education
- ≡ General public
- ≡ Creative industry



Theme: Amsterdam Subway

Nieuwmarkt
gebouwd in 1980

1910

1904

<http://lab.adamlink.nl/ov/index.php>

1 + 2 3 4 5 7 11 12 13 14 17 19 24 26 50 51 52 53 54 tot 22 juli vanaf 22 juli

Lesfall | Imagery from GEBCO Research Group @ University of Heidelberg — Map data © OpenStreetMap

- ≡ *In order to narrow down collections/objects*
- ≡ *Theme: subway/public transport*
- ≡ *July 22, 2018: Opening of new Amsterdam North-South subway line*
- ≡ *Connect places along the line(s) to heritage objects*

Initial Collections



Photographs,
paintings,
drawings,
posters, maps,
etc.



- ≡ Amsterdam Museum
- ≡ *Image database*



- ≡ Amsterdam City Archive
- ≡ *Image database*



- ≡ International Institute of Social History
- ≡ *Image database*
- ≡ *Interviews*

Texts



- ≡ University of Amsterdam
- ≡ *Digitised maps*



- ≡ Amsterdam Public Library
- ≡ *Books on topic "Amsterdam"*

Catalogue records



Project team



≡ Amsterdam Museum
≡ *Judith van Gent*



≡ Amsterdam City Archive
≡ *Nelleke van Zeeland*



≡ International Institute of Social History
≡ *Eric de Ruijter*



≡ University of Amsterdam
≡ *Lukas Koster*



≡ Public Library Amsterdam
≡ *Mark Vos*



≡ External digital heritage professionals
≡ *Ivo Zandhuis (project manager)*
≡ *Petra Dreiskämper*
≡ *Menno den Engelse*



Core focus: Location based linking

- ≡ Streets
- ≡ Buildings
- ≡ Neighbourhoods
- ≡ Existing
- ≡ Dissappeared
- ≡ Name variations
 - ≡ Historical
 - ≡ Spelling
- ≡ Absorbed
- ≡ AbsorbedBy
- ≡ Part of/has Part
- ≡ sameAs

Adamlink Referentiedata Straten Wijken en buurten Gebouwen Personen Data

Dam edit

vanaf 1170-1175

Alle naamvarianten:

- **RB** Dam van 1957
- Napoleonplein van 1806 tot 1813
- Revolutieplein van 1795 tot 1806
- de Plaetse tot 1600
- Den Dam
- die Plaets tot 1600

Relaties

absorbed -> Visteeg
absorbed -> Vijgendam
absorbed -> Vissersdam
absorbed -> Vismarkt

Identifiers

BAG id	0363300000003186
BAG URI	http://bag.basisregistraties.overheid.nl/bag/id/openbare-ruimte/0363300000003186
WikiData id	Q839050
WikiData URI	http://www.wikidata.org/entity/Q839050
Adamlink URI	https://adamlink.nl/geo/street/dam/880

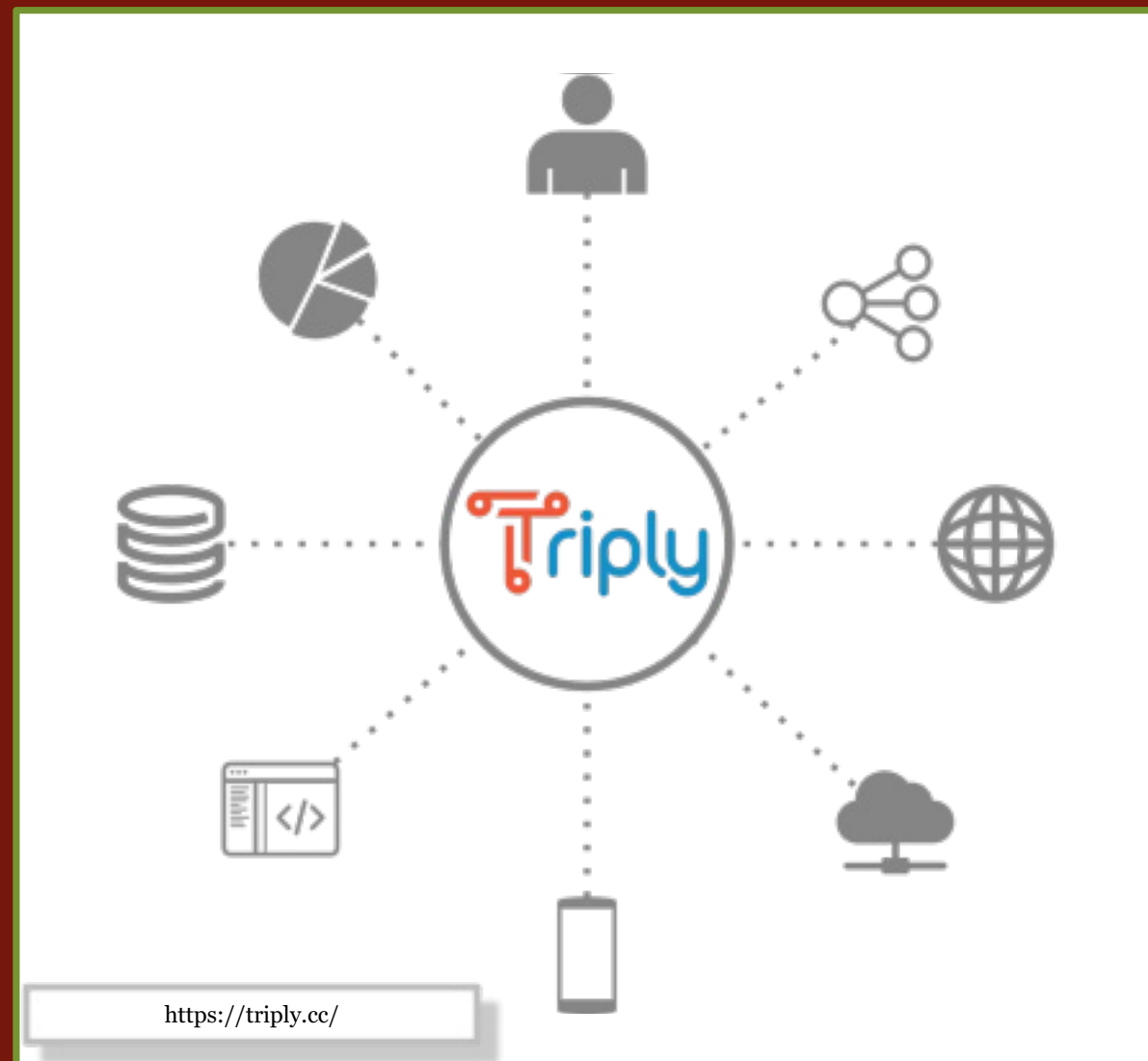
Geometrie

Meer gegevens, waaronder de geometrie als MultiPolygon (in RD) te vinden op <https://api.data.amsterdam.nl/bag/openbareruimte/0363300000003186/>

<https://adamlink.nl/>

Triply Linked Open Data Platform

- ≡ Triple Store
- ≡ Import Turtle
- ≡ Browser
- ≡ Tables
- ≡ Sparql Endpoints
- ≡ API
- ≡ Management
- ≡ Hosted





AdamNet Triply Platform



Login

<https://data.adamlink.nl/>



all

by AdamNet

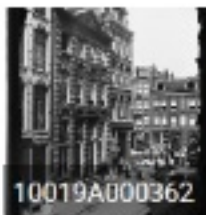
9.581.817 statements

In deze dataset is alle data samengevoegd die tot nu toe door AdamNet is verzameld in het kader van het project Het Verhaal van Amsterdam. Het gaat daarbij op dit moment over de beeldbank van het Stadsarchief, de collectie van het Amsterdam Museum en verbindende data over Amsterdamse straten en personen (denk aan ecartico).



Rembrandt's moeder aan tafel: driekwart lengte, naar rechts

Rembrandt Harmensz. van Rijn



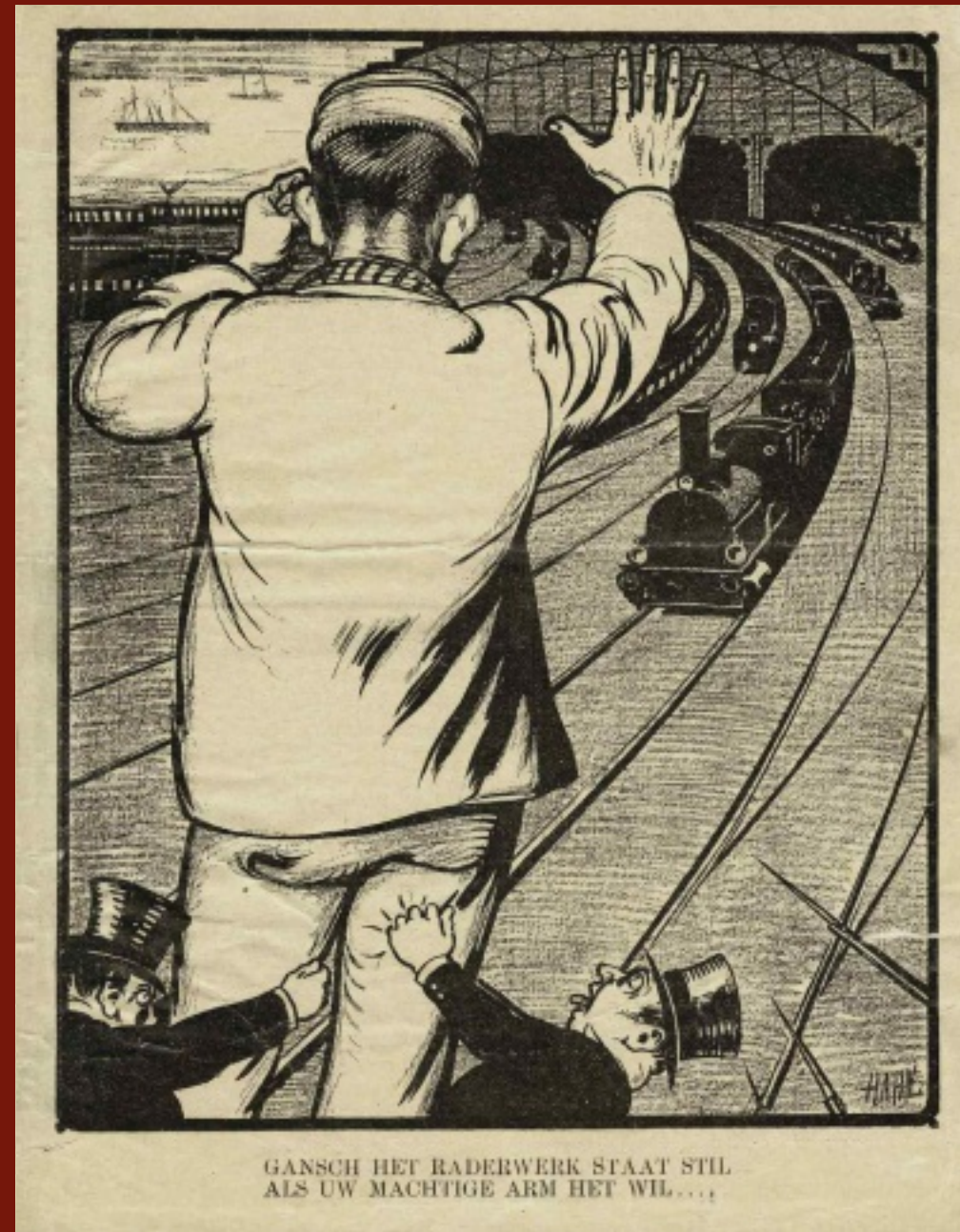
10019A000362



Jodenbreestraat

Experiences

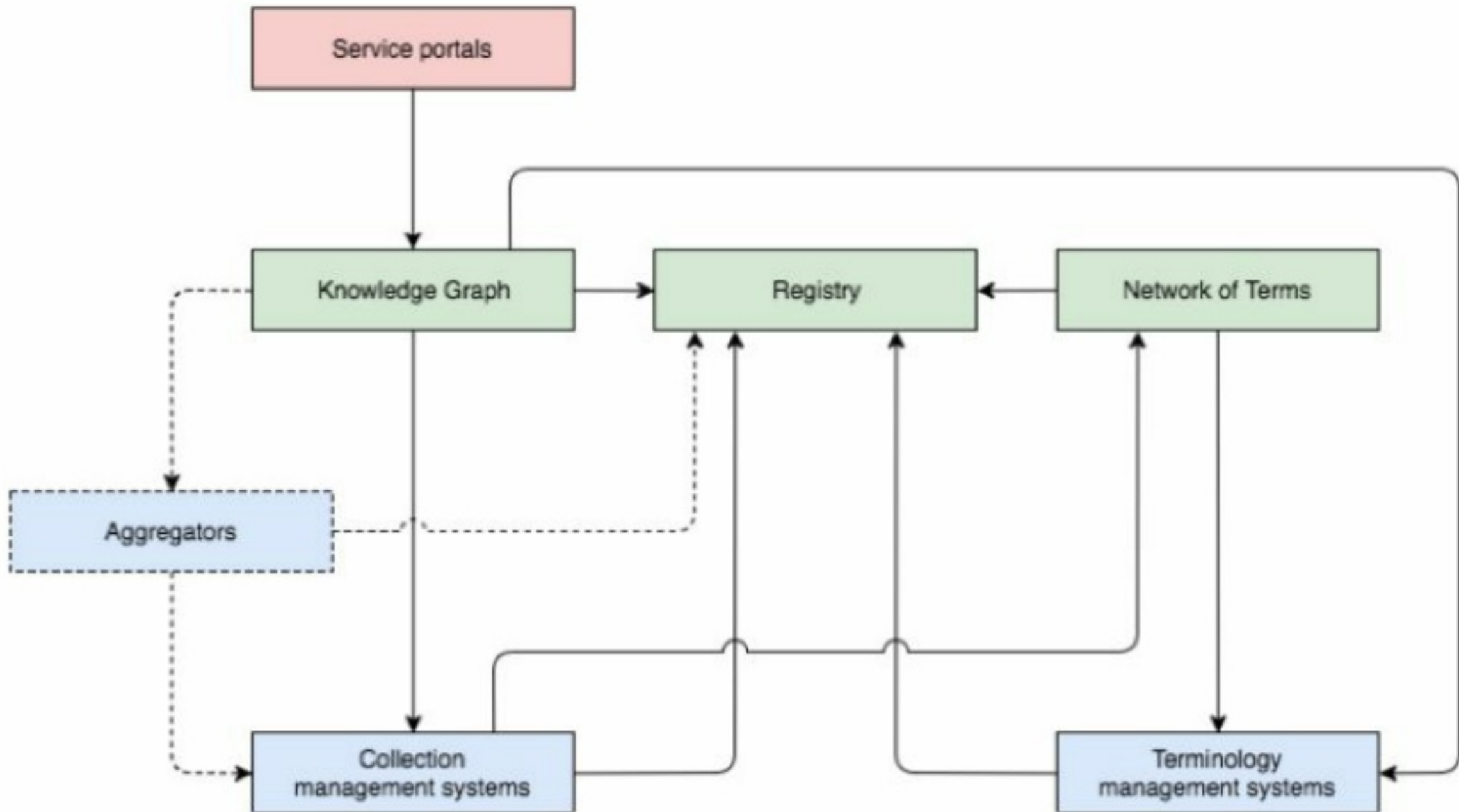
- ≡ Central Platform
- ≡ Local Workflows
- ≡ Apps
- ≡ Data improvement





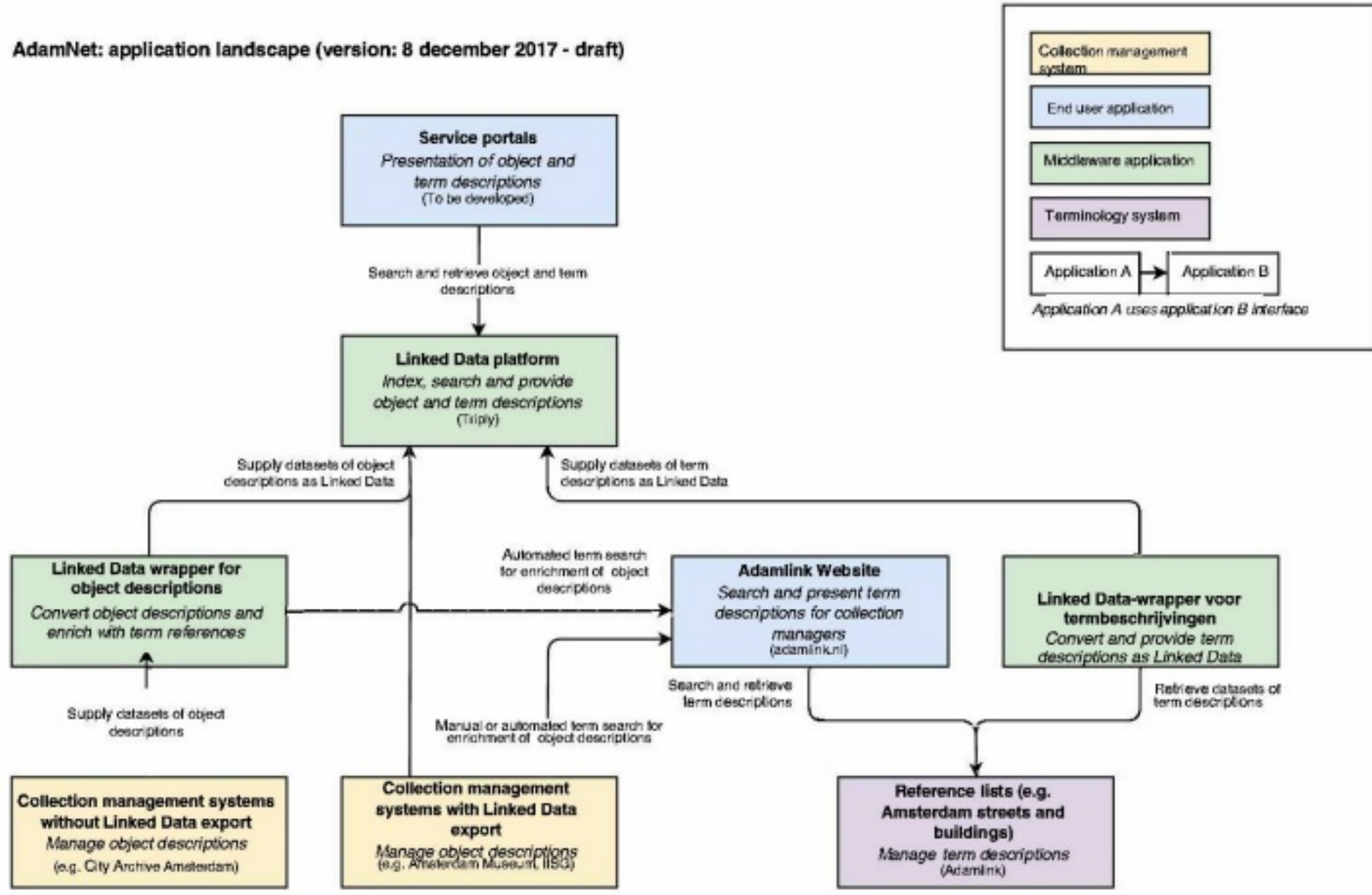
Dutch National Program- Network Digital Heritage

<http://www.netwerkdigitaalervoed.nl/en>

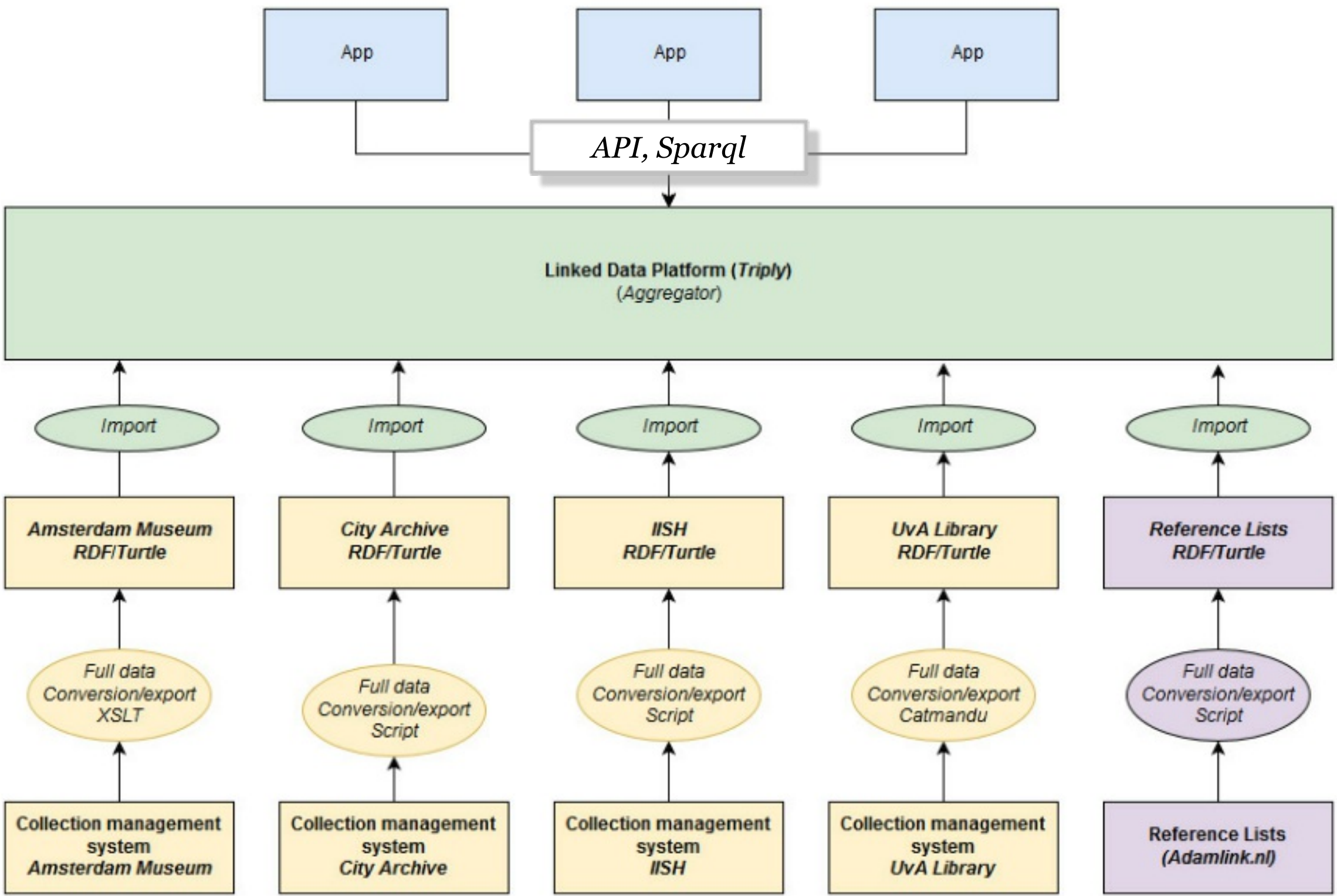


Central Platform: Theory

AdamNet: application landscape (version: 8 december 2017 - draft)



Central Platform: Intermediate situation





Central Platform: "linking points"

≡ **Locations**

- ≡ *Streets*
- ≡ *Buildings*

≡ **Creators/contributors**

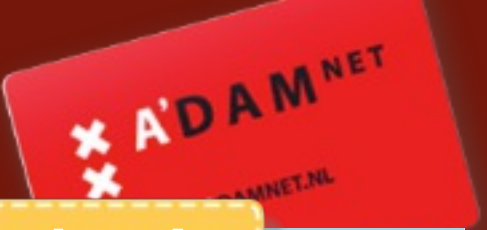
- ≡ *people*
- ≡ *organisations*

≡ **Types**

≡ **Subjects**

- ≡ *including*
- ≡ *people*
- ≡ *organisations*

≡ **In the form of URIs**



founder/director

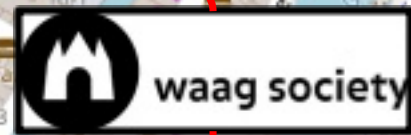
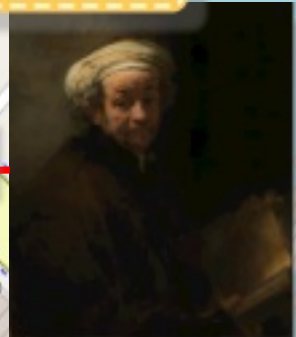
Rembrandt

De Waag

drawing

painting

creator



location

painting

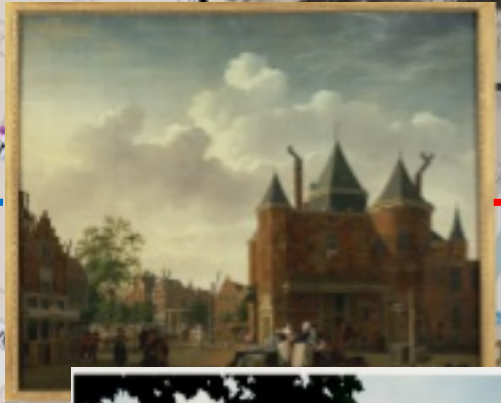


location



creator

location



building

temporal

Nieuwmarkt

subject

1632

location

location



street

Anatomic lesson

location

building

son in law

co-mayor



Jan Six



Nicolaes Tulp



Subway Station

photo

Alignment: Common Data model?

≡ Europeana Data Model?

- ≡ Targeted at data aggregation/consolidation
- ≡ Focused on internal Europeana workflow
- ≡ Mainly DC properties
- ≡ EDM properties: internal procedures



≡ Dublin Core?

- ≡ Not rich enough



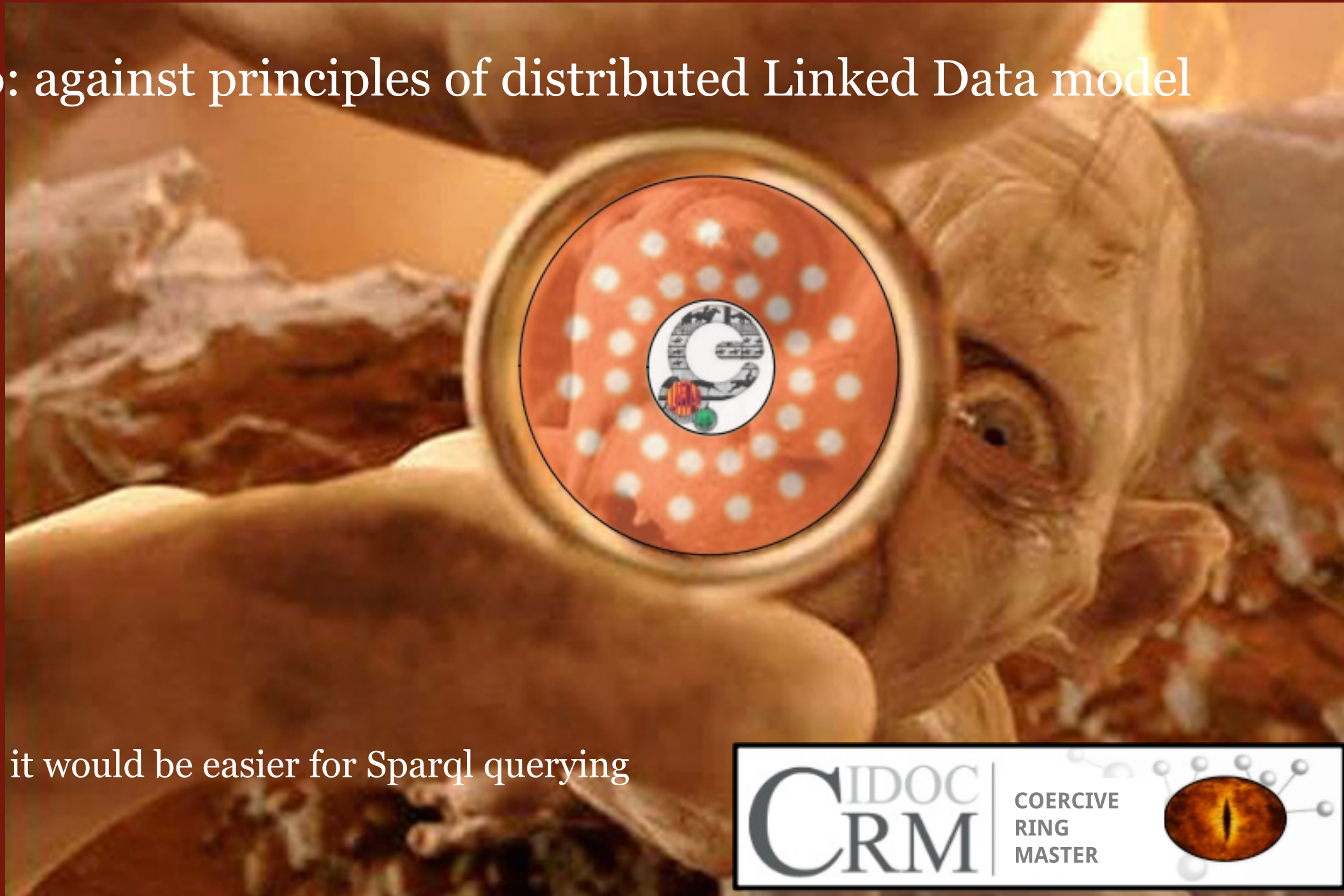
≡ CIDOC-CRM?

- ≡ Not simple enough



Alignment: One Model to Rule Them All?

≡ **No:** against principles of distributed Linked Data model



≡ **But:** it would be easier for Sparql querying

Alignment: Common properties

- ≡ rdf:type  
- ≡ foaf:depiction 
- ≡ rdfs:label 
- ≡ dc:creator 
- ≡ dc:contributor 
- ≡ dc:type 
- ≡ dc:subject 
- ≡ dct:spatial 
- ≡ dct:temporal
- ≡ dc:date
- ≡ sem:hasBeginTimeStamp
- ≡ sem:hasEndTimeStamp

Alignment: Common vocabularies

≡ Type

≡ AAT



≡ People

≡ VIAF

≡ WikiData

≡ RKD-Artists

≡ ...



≡ Subjects

≡ WikiData

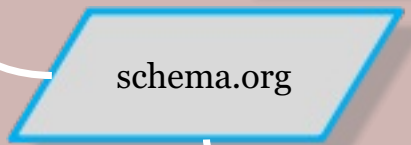
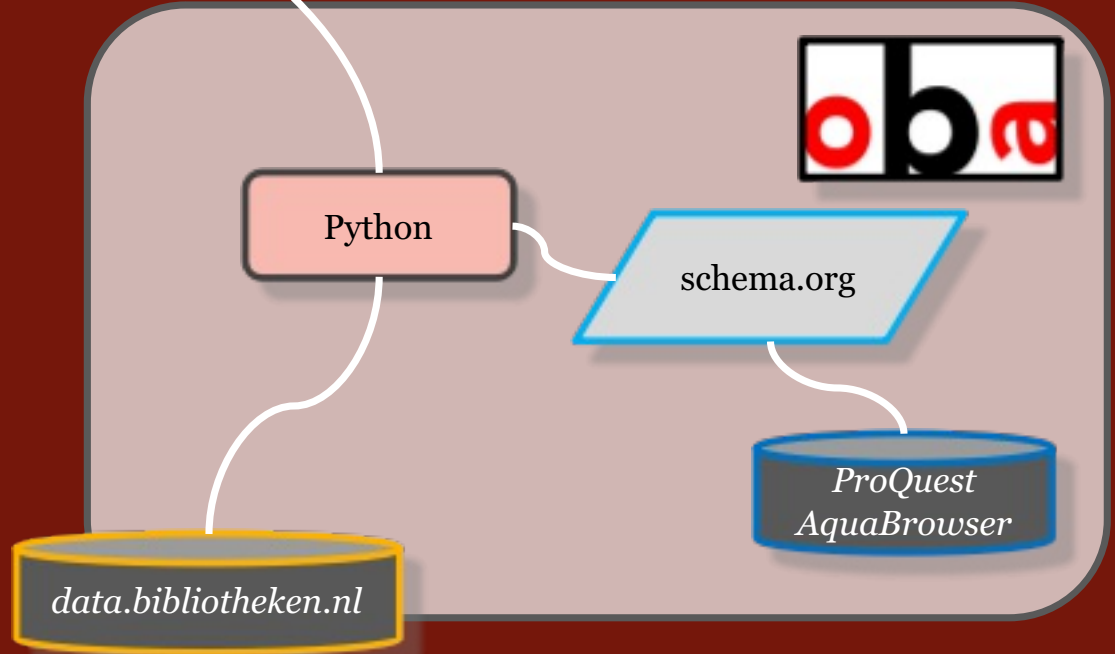
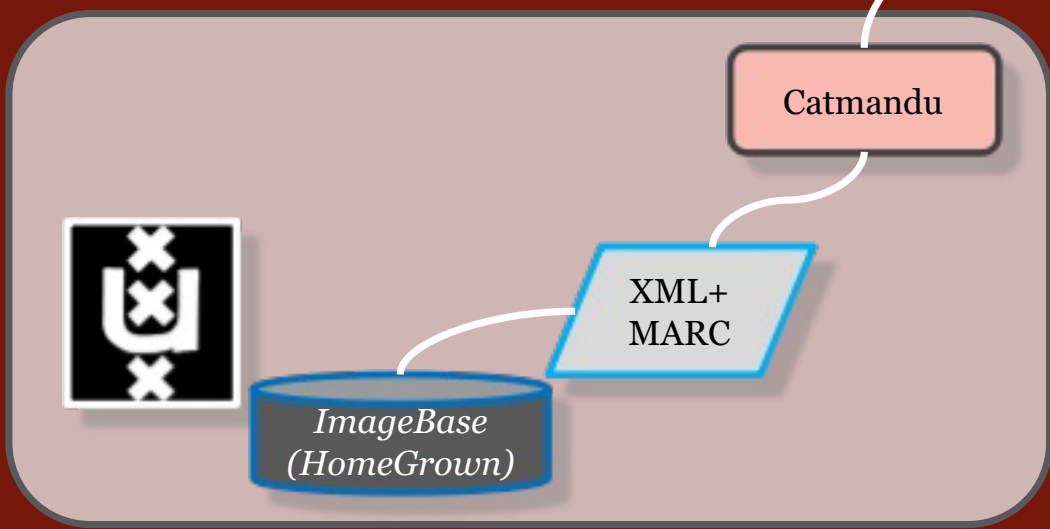
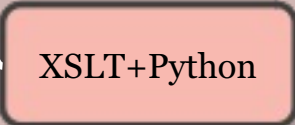
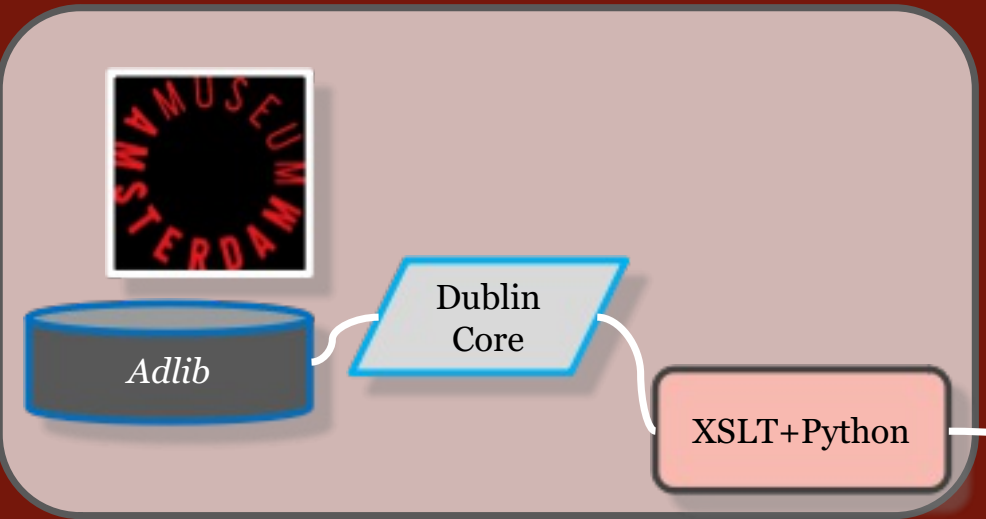
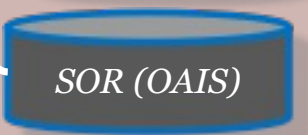
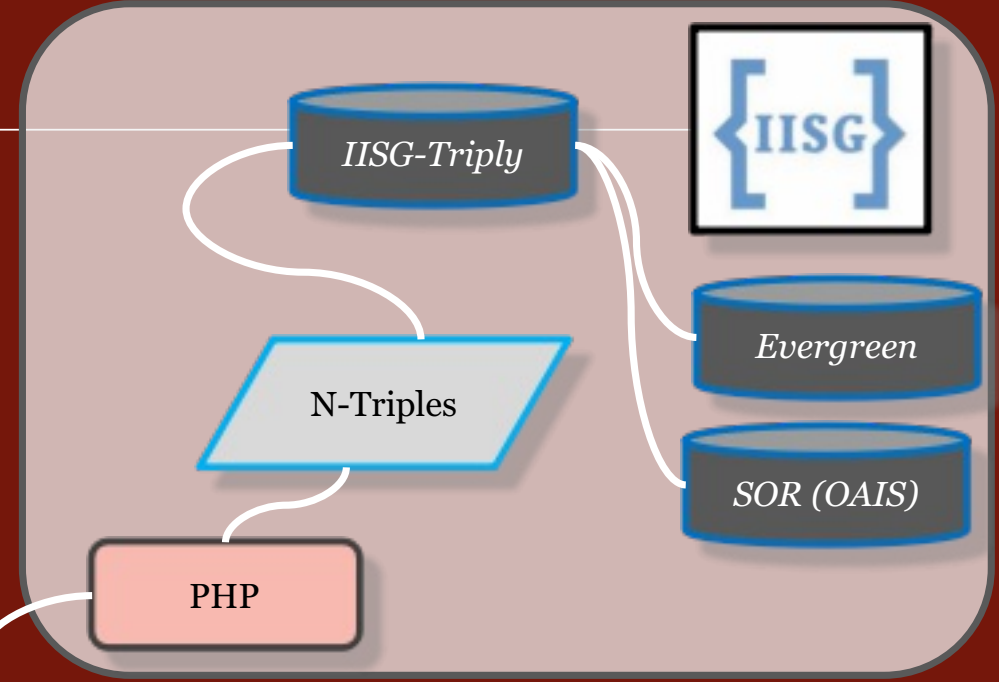
≡ ...



Alignment: sameAs

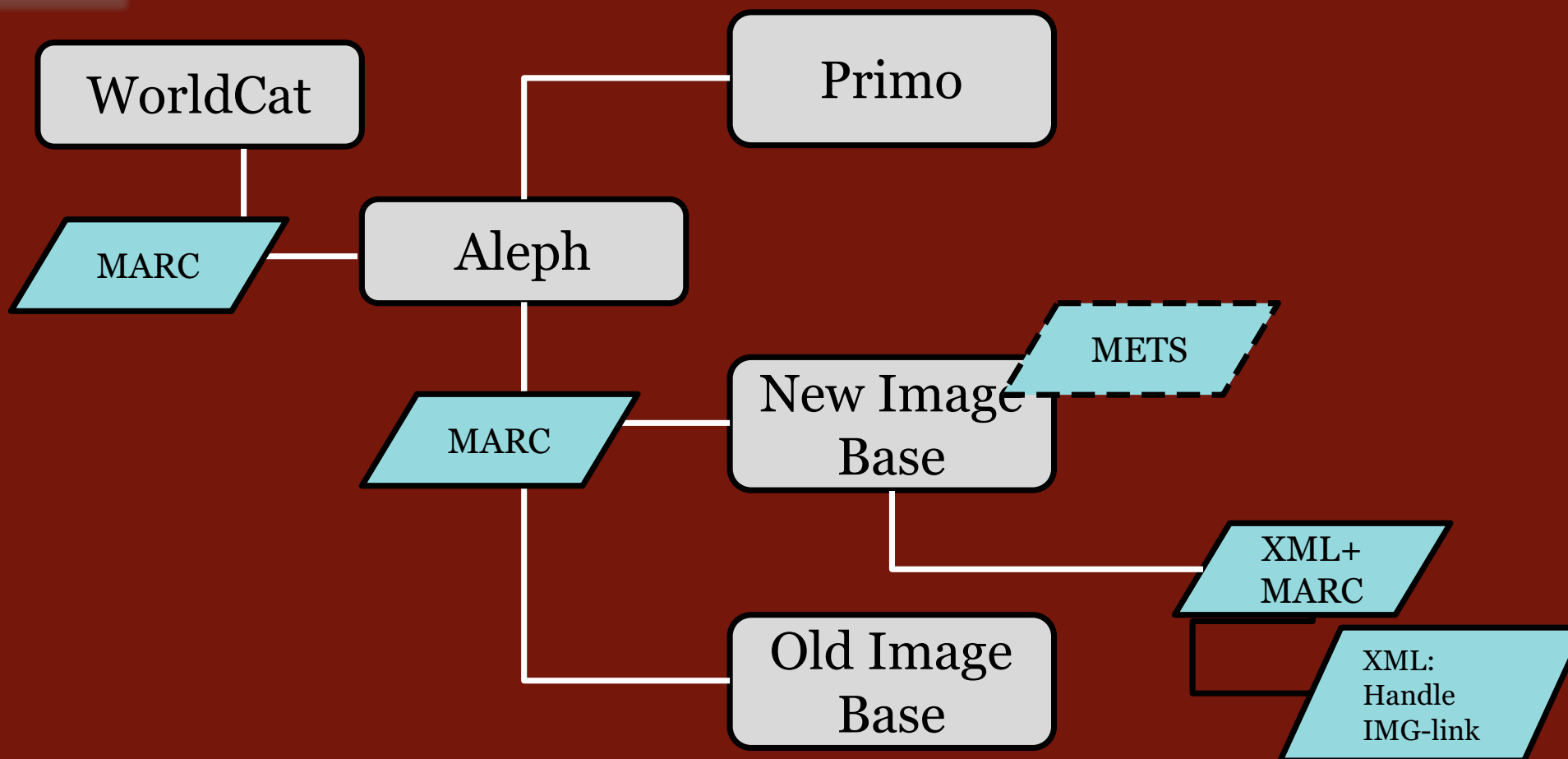
- ≡ items
- ≡ creator/contributor
- ≡ subject
- ≡ location

Local workflows





University of Amsterdam Digital Maps Case





UvA Digital Maps Case

- ≡ Physical map collection approximately: 135,000
- ≡ Digitised maps in ImageBase: 650
 - ≡ 0.5%
- ≡ Physical maps "about Amsterdam": approximately 1000
- ≡ Digitised maps in "about Amsterdam" ImageBase: approximately 60
 - ≡ 6%

1st problem: retrieve all maps of Amsterdam

- ≡ Not all maps of Amsterdam have subject/spatial "amsterdam"
- ≡ Many maps were published in "Amsterdam", but depict different places

The screenshot shows a search interface for 'amsterdam'. At the top, there is a search bar with the text 'amsterdam' and a magnifying glass icon. Below the search bar, there is a filter bar with 'All' and a dropdown arrow. The main content area displays 'Found 423 results for amsterdam'. Below this, there is a filter bar with 'Object Type: Map' and a close icon. The results are displayed in a grid of six map thumbnails. Each thumbnail has a yellow lightbulb icon and a plus sign. On the left side of the screenshot, there is a 'Refine results' sidebar with the following sections:

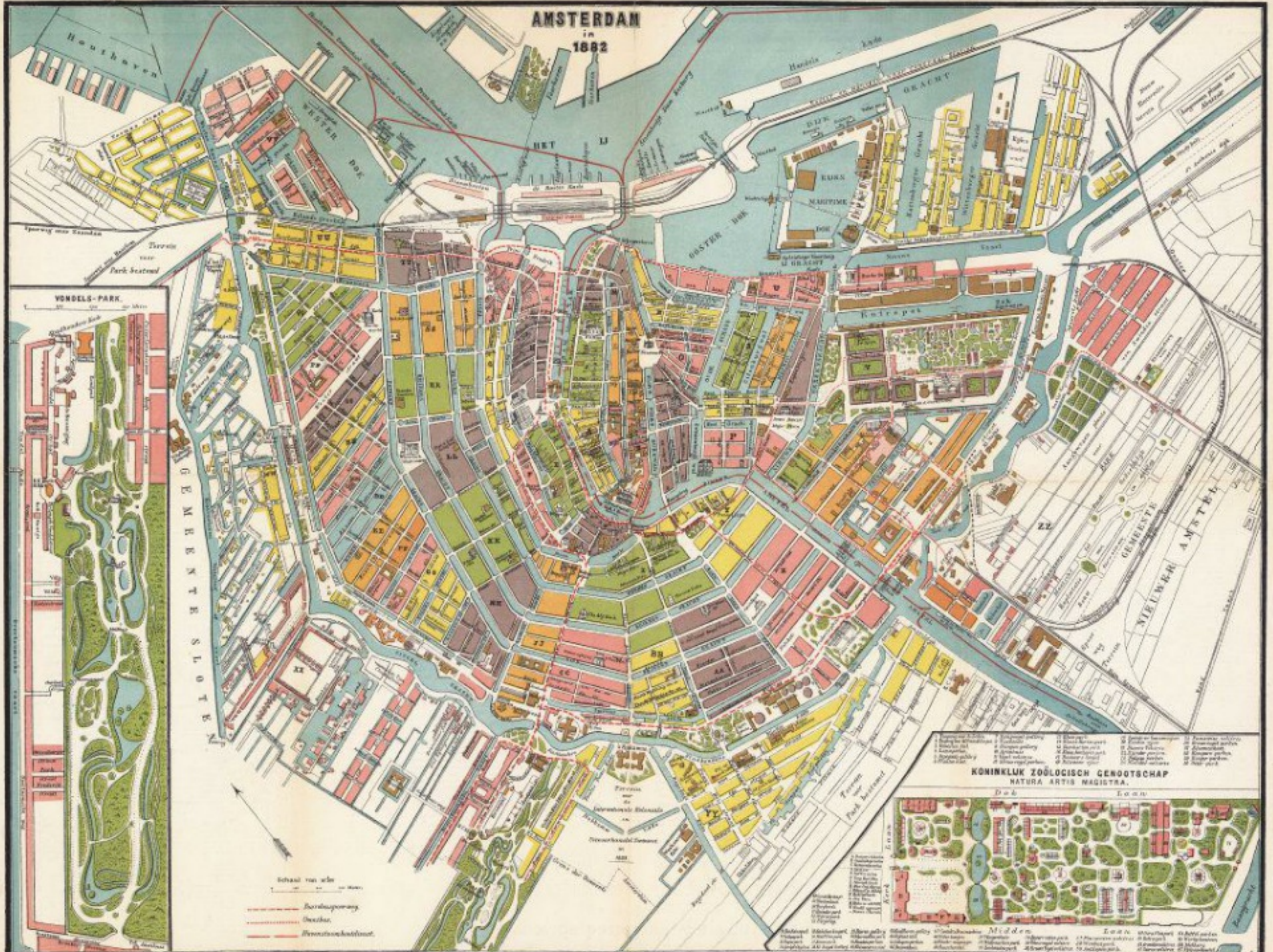
- What**
 - Object Type
 - Map
- Who**
 - Publisher
 - Blaeu, Willem Jansz.
 - Blaeu, Joan
 - Schenk, Petrus
 - More >
- Where**
 - Amsterdam
 - [Amsterdam]
 - [Amsterdam]
 - More >
- When**
 - 1500 - 1599
 - 1540 - 1549
 - 1580 - 1589
 - 1590 - 1599



API call more flexible

- ≡ <http://dpc-test.uba.uva.nl:8561/search?subject=Amsterdam;type=MP;raw=1>
 - ≡ Total number: 43
- ≡ [http://dpc-test.uba.uva.nl:8561/search?freeformQuery=\(title:amsterdam+OR+subject:amsterdam\);type=MP;raw=1](http://dpc-test.uba.uva.nl:8561/search?freeformQuery=(title:amsterdam+OR+subject:amsterdam);type=MP;raw=1)
 - ≡ Total number: 62
- ≡ [http://dpc-test.uba.uva.nl:8561/search?freeformQuery=\(title:amsterdam|amsteldam|amstelredam+OR+subject:amsterdam\);type=MP;raw=1](http://dpc-test.uba.uva.nl:8561/search?freeformQuery=(title:amsterdam|amsteldam|amstelredam+OR+subject:amsterdam);type=MP;raw=1)
 - ≡ Total number: 65
- ≡ False Positives (Place of publication in Title Statement)

AMSTERDAM in 1882



**KONINKLUK ZOOLOGISCH GENOOTSCHAP
NATURA ARTIS MAGISTRA.**

Dob **Loon**

Legend:

- 1. Koninklijk Genootschap
- 2. Koninklijk Genootschap
- 3. Koninklijk Genootschap
- 4. Koninklijk Genootschap
- 5. Koninklijk Genootschap
- 6. Koninklijk Genootschap
- 7. Koninklijk Genootschap
- 8. Koninklijk Genootschap
- 9. Koninklijk Genootschap
- 10. Koninklijk Genootschap
- 11. Koninklijk Genootschap
- 12. Koninklijk Genootschap
- 13. Koninklijk Genootschap
- 14. Koninklijk Genootschap
- 15. Koninklijk Genootschap
- 16. Koninklijk Genootschap
- 17. Koninklijk Genootschap
- 18. Koninklijk Genootschap
- 19. Koninklijk Genootschap
- 20. Koninklijk Genootschap
- 21. Koninklijk Genootschap
- 22. Koninklijk Genootschap
- 23. Koninklijk Genootschap
- 24. Koninklijk Genootschap
- 25. Koninklijk Genootschap
- 26. Koninklijk Genootschap
- 27. Koninklijk Genootschap
- 28. Koninklijk Genootschap
- 29. Koninklijk Genootschap
- 30. Koninklijk Genootschap

XML + MARC

```

<docHit rank="11" path="erfgoed:metadata/184368197/meta.xml" score="88" totalHits="0">
  <meta>
    <identifier label.nl="identifiser" label.en="identifier">hdl:11245/3.1005</identifier>
    <marc>
      <record>
        <info type="Items"
          href="http://merel.ic.uva.nl:1893/rest-dlf/record/UVA01000937346/items"/>
        <info type="Holdings"
          href="http://merel.ic.uva.nl:1893/rest-dlf/record/UVA01000937346/holdings"/>
        <info type="Filters"
          href="http://merel.ic.uva.nl:1893/rest-dlf/record/UVA01000937346/filters"/>
        <leader>00000nem a22      i 4500</leader>
        <controlfield tag="001">000937346</controlfield>
        <controlfield tag="005">20070326112939.000</controlfield>
        <controlfield tag="008">940824|1882    ne |||| |    |||| ||dut|d</controlfield>
        <datafield tag="035" ind1=" " ind2=" ">
          <subfield code="a">(NL-pica)121640264</subfield>
        </datafield>
        <datafield tag="035" ind1=" " ind2=" ">
          <subfield code="a">(OCoLC)71501898</subfield>
        </datafield>

```

```

<facet-what.en>Object Type::Map</facet-what.en>
<facet-what.nl>objecttype::kaart</facet-what.nl>
<shelf_mark label.nl="signatuur" label.en="Shelf Mark">OTM: HB-KZL 101.05.VI E 25 (62)</shelf_mark>
<section label.nl="sectie" label.en="section">BC</section>
<image image="data/images/184368197/viewer/resultviewer/184368197.jpg"
  thumbnail="data/images/184368197/thumbs/102/184368197.jpg"/>
<view url="view?docId=metadata/184368197/meta.xml"
  thumbnail="data/images/184368197/thumbs/296/184368197.jpg">image</view>
</meta>
</docHit>

```

Catmandu - <http://librecat.org/>



*Thanks to Patrick
Hochstenbach*

- ≡ Data Processing Toolkit
- ≡ Open Source
- ≡ MARC2RDF: <https://github.com/LibreCat/MARC2RDF>
 - ≡ MARC => Dublin Core => RDF
 - ≡ Fix scripts: manipulate data

```
# creator
if all_match(record.0.0, '100|110|111')
  marc_map('***a', tmp.foaf_name)
  marc_map('***d', tmp.date)
```

```
marc_map(650, _r.dct_subject.$append, -join => ' ')
marc_map(653, _r.dct_subject.$append, -join => ' ')
```

XML+MARC => MARC



Thanks to Patrick
Hochstenbach

≡ Catmandu+perl:

- ≡ grab Handle+Image link
- ≡ move to MARC fields, prepend base URLs
- ≡ handle => 024
- ≡ image link => 856
- ≡ remove XML
- ≡ retain MARC-XML
- ≡ Input for Catmandu MARC 2 RDF

```
<marc:datafield tag="024" ind1=" " ind2=" ">
  <marc:subfield code="a">http://hdl.handle.net/11245/3.1005</marc:subfield>
  <marc:subfield code="2">hdl</marc:subfield>
</marc:datafield>
<marc:datafield tag="856" ind1=" " ind2=" ">
  <marc:subfield code="u">
https://www.uvaerfgoed.nl/media/data/images/184368197/viewer/resultviewer/184368197.jpg</marc:subfield>
</marc:datafield>
```



MARC 2 RDF

- ≡ Basically, the MARC2RDF scripts convert MARC to RDF "as is"
- ≡ Strings in, strings out
- ≡ No URIs in MARC? No URIs in RDF

RDF without URIs is like MARC-XML

Legacy identifiers to the rescue!

```
<datafield tag="651" ind1=" " ind2="7">
  <subfield code="a">Amsterdam (stad)</subfield>
  <subfield code="2">gtt</subfield>
  <subfield code="9">087008068</subfield>
</datafield>
<datafield tag="691" ind1=" " ind2=" ">
  <subfield code="a">74.20</subfield>
  <subfield code="j">geografie van Nederland</subfield>
  <subfield code="2">hal</subfield>
  <subfield code="9">169910598</subfield>
</datafield>
<datafield tag="699" ind1=" " ind2=" ">
  <subfield code="x">1001</subfield>
  <subfield code="2">goo</subfield>
</datafield>
<datafield tag="700" ind1="1" ind2=" ">
  <subfield code="a">Braakensiek, Albertus</subfield>
  <subfield code="c">sr.</subfield>
  <subfield code="d">1811-1883</subfield>
  <subfield code="g">graveur, lithograaf, tekenaar</subfield>
  <subfield code="9">070009031</subfield>
</datafield>
<datafield tag="700" ind1="1" ind2=" ">
  <subfield code="a">van der Stok, Arend Jan</subfield>
  <subfield code="c">Jr.</subfield>
  <subfield code="d">1847-1908</subfield>
  <subfield code="9">138269262</subfield>
</datafield>
<datafield tag="710" ind1="2" ind2=" ">
  <subfield code="a">Iresling Lamp; Co.</subfield>
  <subfield code="9">075330946</subfield>
</datafield>
```

- ≡ Old PICA identifiers (PPN)
- ≡ Subject Headings
- ≡ Creator/contributor Identifiers

Item/record identifiers

```
<docHit rank="11" path="erfgoed:metadata/184368197/meta.xml" score="88" totalHits="0">
  <meta>
    <identifier label.nl="identifier" label.en="identifier">hdl:11245/3.1005</identifier>
    <marc>
      <record>
        <info type="Items"
          href="http://merel.ic.uva.nl:1893/rest-dlf/record/UVA01000937346/items"/>
        <info type="Holdings"
          href="http://merel.ic.uva.nl:1893/rest-dlf/record/UVA01000937346/holdings"/>
        <info type="Filters"
          href="http://merel.ic.uva.nl:1893/rest-dlf/record/UVA01000937346/filters"/>
        <leader>00000nem a22      i 4500</leader>
        <controlfield tag="001">000937346</controlfield>
        <controlfield tag="005">20070326112939.000</controlfield>
        <controlfield tag="008">940824|1882    ne |||| |    |||| ||dut|d</controlfield>
        <datafield tag="035" ind1=" " ind2=" " >
          <subfield code="a">(NL-pica)121640264</subfield>
        </datafield>
        <datafield tag="035" ind1=" " ind2=" " >
          <subfield code="a">(OCoLC)71501898</subfield>
        </datafield>
      </record>
    </marc>
  </meta>
</docHit>
```



National Library of the Netherlands new linked data portal

KB Koninklijke Bibliotheek
Nationale bibliotheek van Nederland

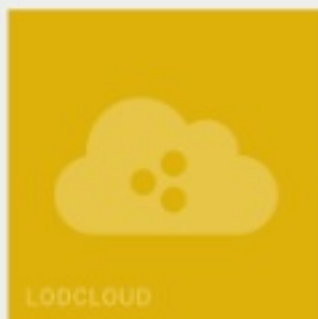
<http://data.bibliotheken.nl/>

De toegang tot alle Linked Data zoals beschikbaar gesteld door de [Koninklijke Bibliotheek](#).
Deze dienst is een bètaversie. Meer informatie over deze en andere datasets en -services? Kijk bij [Dataproducten en API's](#).

Dataset	URI
"Thesaurus KBcode"@nl	http://data.bibliotheken.nl/id/dataset/kbcode
"Organisaties uit de corporatiethesaurus van de Koninklijke Bibliotheek"@nl	http://data.bibliotheken.nl/id/dataset/corps
"Brinkman trefwoordthesaurus"@nl	http://data.bibliotheken.nl/id/dataset/brinkman
"Gemeenschappelijke Trefwoordthesaurus (GTT)"@nl	http://data.bibliotheken.nl/id/dataset/gtt
"Nederlandse Bibliografie Totaal (NBT)"@nl	http://data.bibliotheken.nl/id/dataset/nbt
"Personen uit de Nederlandse Thesaurus van Auteursnamen (NTA)"@nl	http://data.bibliotheken.nl/id/dataset/persons

Amsterdam (city)

<http://data.bibliotheken.nl/id/thes/p087008068>



```
<datafield tag="651" ind1=" " ind2="7">
  <subfield code="a">Amsterdam (stad)</subfield>
  <subfield code="2">gtt</subfield>
  <subfield code="9">087008068</subfield>
</datafield>
```

rdfs:label	Amsterdam (city) ----- Amsterdam (stad)
skos:editorialNote	Bos51 ----- GOO coördinator
skos:prefLabel	Amsterdam (city) ----- Amsterdam (stad)
rdf:type	skos:Concept
skos:broader	< http://data.bibliotheken.nl/id/thes/p078605768 > ↳ Noord-Holland
skos:narrower	< http://data.bibliotheken.nl/id/thes/p078458013 > ↳ Bos en Lommerbuurt

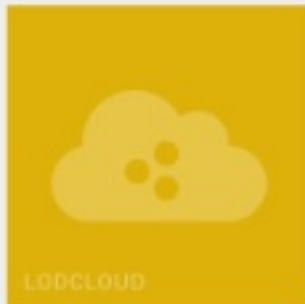


Braakensiek, Albertus (sr. ; 1811-1883 ; graveur, lithograaf, tekenaar)

<http://data.bibliotheken.nl/id/thes/p070009031>

rdfs:comment

medewerker van zoons A.B.H. en J.C. (Scheen)



```
<datafield tag="700" ind1="1" ind2=" " >
  <subfield code="a">Braakensiek, Albertus</subfield>
  <subfield code="c">sr.</subfield>
  <subfield code="d">1811-1883</subfield>
  <subfield code="g">graveur, lithograaf, tekenaar</subfield>
  <subfield code="9">070009031</subfield>
```

rdfs:label Braakensiek, Albertus (sr. ; 1811-1883 ; graveur, lithograaf, tekenaar)

schema:deathDate 1883

schema:name Albertus Braakensiek

schema:birthDate 1811

schema:familyName Braakensiek

schema:givenName Albertus

rdf:type schema:Person

owl:sameAs <<http://viaf.org/viaf/34756443>>

foaf:isPrimaryTopicOf _98e5fe88dcf48fe265ac0550497f6ce4



Catmandu Fix

```

do marc_each()

  if all_match(record.0.0, '600|610|611|630|650|653|691')

    if marc_has('***9')
      #add URIs
      marc_map('***aj', tmp.foaf_name.$append, -join => ' ')
      marc_map('***aj', tmp.skos_altLabel.$append, -join => ' ')
      marc_map('***9', tmp._id)
      prepend(tmp._id, "http://data.bibliotheken.nl/id/thes/p")

      copy_field(tmp, _r.dc_subject.$append)
    else
      #add strings
      marc_map('***aj', _r.dc_subject.$append, -join => ' ')
    end
  end
end

# remove temporary field
remove_field(tmp)
end

```



Convert MARC type to AAT

```
# Type
marc_map(LDR/6, _r.dc_type.$append) <leader>00000nem a22 i 4500</leader>
lookup(_r.dc_type.*, 'fix/leader_type.csv', -delete => 1)

###
marc_map(694a, tmp.cat)
split_field(tmp.cat, ":")
trim(tmp.cat.1)
copy_field(tmp.cat.0, _r.dc_type.$append, -join => ' ')
copy_field(tmp.cat.1, _r.dc_type.$append, -join => ' ')
remove_field(tmp.cat)

#Add AAT Type URI's
copy_field(_r.dc_type, tmp_type)
lookup(_r.dc_type.*, 'fix/type_aat.csv', -delete => 1)
prepend(_r.dc_type.*, "http://vocab.getty.edu/aat/")
move_field(tmp_type.*, _r.dc_type.$append, -join => ' ')
```

type=map

<http://vocab.getty.edu/aat/300028094>



<<http://hdl.handle.net/11245/3.1005>> <<http://purl.org/dc/elements/1.1/contributor>> <
<http://data.bibliotheken.nl/id/thes/p070009031>>, <<http://data.bibliotheken.nl/id/thes/p075330946>>, <
<http://data.bibliotheken.nl/id/thes/p138269262>> ;
<<http://purl.org/dc/elements/1.1/date>> "", "1882" ;
<<http://purl.org/dc/elements/1.1/description>> "D'Ailly, no. 554; Hameleers, no. 43:1", "Inzet: [1.] Vondels Park (27 x 6,5 cm); [2.] Koninkl\u00a0133k Zo\u00a0F6logisch Genootschap ; Natura Artis Magistra (met legenda) (9 x 20 cm)", "Omslagtitel: Platte grond van Amsterdam in 1882 door A. Braakensiek ; herz. en b\u00a0133gewerkt [door] A.J. van der Stok Jr", "Verso: Gids voor de bezoekers van Amsterdam", "Verso: L\u00a0133st van straten, grachten enz" ;
<<http://purl.org/dc/elements/1.1/identifier>> <<http://data.bibliotheken.nl/id/nbt/p121640264>>, <
<http://hdl.handle.net/11245/3.1005>>, <<http://www.worldcat.org/oclc/71501898>>, "000937346" ;
<<http://purl.org/dc/elements/1.1/language>> "dut" ;
<<http://purl.org/dc/elements/1.1/publisher>> "Amsterdam Tj. van Holkema" ;
<<http://purl.org/dc/elements/1.1/spatial>> <<http://data.bibliotheken.nl/id/thes/p087008068>> ;
<<http://purl.org/dc/elements/1.1/subject>> <<http://data.bibliotheken.nl/id/thes/p169910598>> ;
<<http://purl.org/dc/elements/1.1/title>> "Amsterdam in 1882 A. Braakensiek ; Tresling & Co. Hof Lith. Amst" ;
<<http://purl.org/dc/elements/1.1/type>> <<http://vocab.getty.edu/aat/300028094>>, "kaart" ;
<<http://purl.org/dc/terms/extent>> "1 krt lithogr., in kleur 38 x 51,5 cm" ;
<<http://purl.org/dc/terms/isReferencedBy>> "D'Ailly, no. 554; Hameleers, no. 43:1" ;
<<http://purl.org/dc/terms/spatial>> "Schaal 1:10.500" ;
<<http://rdfs.org/ns/void#inDataset>> <<https://data.adamlink.nl/uva/maps>> ;
<<http://semanticweb.cs.vu.nl/2009/11/sem/hasBeginTimeStamp>> "1882" ;
<<http://semanticweb.cs.vu.nl/2009/11/sem/hasEndTimeStamp>> " " ;
<<http://www.europeana.eu/schemas/edm/dataProvider>> "Bibliotheek Universiteit van Amsterdam" ;
<<http://www.europeana.eu/schemas/edm/intermediateProvider>> "Stichting Adamnet" ;
<<http://www.europeana.eu/schemas/edm/isShownBy>> <
<https://www.uvaerfgoed.nl/media/data/images/184368197/viewer/resultviewer/184368197.jpg>> ;
a <<http://www.europeana.eu/schemas/edm/ProvidedCHO>> ;
<<http://www.w3.org/2000/01/rdf-schema#label>> "Amsterdam in 1882" ;
<<http://www.w3.org/2002/07/owl#sameAs>> <<http://data.bibliotheken.nl/id/nbt/p121640264>>, <
<http://www.worldcat.org/oclc/71501898>> ;
<<http://xmlns.com/foaf/0.1/depiction>> <
<https://www.uvaerfgoed.nl/media/data/images/184368197/viewer/resultviewer/184368197.jpg>> .



Add turtle to Triply - <https://data.adamlink.nl/UvA/Maps>

UvA / Maps Login

M

Maps

by [UvA](#)

Created at 2/14/2018, 11:10:21 PM
2.430 statements

Kaarten van Amsterdam uit de Nieuwe Beeldbank van de Bibliotheek van de Universiteit van Amsterdam/Allard Pierson Museum.
<https://www.uvaerfgoed.nl/beeldbank/>

Graphs

default	2.414
outlines	16

Example resources

Amsterdam in 1882

Plan van Amsterdam met aanduiding der omnibus lijnen

Die vermaerde Coopstadt van Amstelredam

Omnibus kaart, of Nieuwe platte grond der stad Amsterdam

Amsterdam

Services

[Maps](#)

Assets

[kaarten.ttl](#)
[maps-outlines.ttl](#)

>

Amsterdam in 1882



ProvidedCHO

<http://hdl.handle.net/11245/3.1005>

Contributor

Braakensiek, Albertus
Tresling & Co.
van der Stok, Arend Jan

Date

1882

Description

D'Ailly, no. 554; Hameleers, no. 43:1

Inzet: [1.] Vondels Park (27 x 6,5 cm); [2.] Koninklijk Zoölogisch Genootschap ;
Natura Artis Magistra (met legenda) (9 x 20 cm)

Omslagtitel: Platte grond van Amsterdam in 1882 door A. Braakensiek ; herz. en
bijgewerkt [door] A.J. van der Stok Jr

Verso: Gids voor de bezoekers van Amsterdam

Verso: Lijst van straten, grachten enz

Identifier

(NL-pica)121640264
(OCoLC)71501898
000937346

Language

dut

Publisher

Amsterdam Tj. van Holkema

Spatial

Amsterdam (stad)

Subject

74.20 geografie van Nederland

Braakensiek,
Albertus



<http://data.bibliotheken.nl/id/thes/p070009031>

BirthDate

1811

DeathDate

1883

AltLabel

Braakensiek, Albertus 1811-1883 sr. graveur, lithograaf, tekenaar
Braakensiek, Albertus sr. 1811-1883 graveur, lithograaf, tekenaar

Amsterdam
(stad)

<http://data.bibliotheken.nl/id/thes/p087008068>

AltLabel

Amsterdam (stad)



These Handles are NOT URIs (yet)

- ≡ No Content Negotiation (yet)
- ≡ Handle in browser leads to page in Image Base
- ≡ Handle in Triply functions as URI (Sparql, Dereferencing)




Handle in browser


https://www.uvaerfgoed.nl/beeldbank/view/identificer=hdl:11245/3.1005

UNIVERSITEIT VAN AMSTERDAM


ERFGOED

Home Verhalen Topstukken English Uitloggen Mijn collectie

Zoeken 

Alles 

Terug




Amsterdam in 1882, A. Braakensiek ; Tresling & Co. Hof Lith. Amst

Titel	Amsterdam in 1882, A. Braakensiek ; Tresling & Co. Hof Lith. Amst
Materiaal	lithogr., in kleur
Auteur	Braakensiek, Albertus, sr., 1811-1883, graveur, lithograaf, tekenaar van der Stok, Arend Jan, jr., 1847-1908
Uitgever	Tresling & Co. Amsterdam, Tj. van Holkema [Amsterdam];, Roeloffzen & Hübner
Datering	1882
Omvang	1 krt
Afmetingen	38 x 51,5 cm
Schaal	Schaal 1:10.500
Signatuur	OTM: HB-KZL 101.05.VI E 25 (62)
Permalink	hdl.handle.net/11245/3.1005




Handle in Triply Sparql

UvA / Maps 🔍  lukask

Query X +

Visit SPARQL endpoint

```
1 PREFIX rdf: <http://www.w3.org/1999/02/22-rdf-syntax-ns#>
2 PREFIX rdfs: <http://www.w3.org/2000/01/rdf-schema#>
3 SELECT * WHERE {
4   <http://hdl.handle.net/11245/3.1005> ?pred ?obj .
5 }
6
```

Table Response Pivot Table Google Chart Geo 

Showing 1 to 34 of 34 entries (in 0.076 seconds) Search: Show 50 entries

	pred	obj
1	http://www.w3.org/1999/02/22-rdf-syntax-ns#type	http://schema.org/CreativeWork
2	http://purl.org/dc/terms/extent	"1 kr" ^{^^xsd:string}
3	http://www.w3.org/2000/01/rdf-schema#label	"Amsterdam in 1882" ^{^^xsd:string}
4	http://www.w3.org/2002/07/owl#sameAs	http://data.bibliotheken.nl/id/mb/p121640264
5	http://www.w3.org/2002/07/owl#sameAs	http://www.worldcat.org/oclc/71501898
6	http://rdfs.org/ns/void#inDataset	https://data.adamlink.nl/uva/maps
7	http://www.europeana.eu/schemas/edm/isShownBy	https://www.uvaerfgoed.nl/media/data/images/184368197/viewer/resultviewer/184368197.jpg
8	http://xmlns.com/foaf/0.1/depiction	https://www.uvaerfgoed.nl/media/data/images/184368197/viewer/resultviewer/184368197.jpg
9	http://purl.org/dc/elements/1.1/creator	http://data.bibliotheken.nl/id/thes/p070009031
10	http://purl.org/dc/elements/1.1/creator	http://data.bibliotheken.nl/id/thes/p138269262
11	http://purl.org/dc/elements/1.1/creator	"Braakensiek, Albertus" ^{^^xsd:string}
12	http://purl.org/dc/elements/1.1/creator	"Tresling & Co." ^{^^xsd:string}
13	http://purl.org/dc/elements/1.1/creator	"van der Stok, Arend Jan" ^{^^xsd:string}
14	http://purl.org/dc/elements/1.1/date	"1882" ^{^^xsd:string}

Apps - <http://lab.adamlink.nl/>

Het Adamlink Lab

Op deze plek vind je links naar applicaties die op de Adamlink data zijn gemaakt. Ze geven een idee wat je er zoal mee kan.

Lees ook de Adamlink Blog

Op [onze blog](#) publiceren we artikelen voor erfgoedprofessionals, ontwikkelaars en ieder ander die meer over ons project of over onze data wil weten.

Bekijk ook de Adamlink Referentiedata

[Onze referentiedata](#) is vooral bedoeld om goede identifiers te vinden bij straten, personen, gebouwen, enzovoort. Maar je vindt er natuurlijk ook waar die ene verdwenen straat precies lag.

A'dam op de kaart



De kaarten van het stadsarchief waren alleen in de beeldbank terug te vinden. Totdat Bert en Menno ze op de HackaLOD ook geografisch ontsloten.

Op [github](#) meer informatie en links naar beide applicaties.

A'dam op de kaart 2



In een [tweede prototype](#) zoek je ook met andere parameters, zoals deelcollectie en tijd. En SPARQL liefhebbers komen hier ook aan hun trekken.

HvA prototypes



Dertig HvA studenten werkten een week lang op de OBA aan dertig Adamlink applicaties. We zijn erg onder de indruk van [de resultaten](#), zeker als je in aanmerking neemt dat zowel de collecties zelf, als het bevragen daarvan met SPARQL, onbekend terrein waren.

Pionieren



Zand, net gesloten straten, de eerste boompjes in de grond. Eens kijken of we dit soort foto's van pionierend Amsterdam boven water krijgen met een query die beeld ophaalt dat genomen is binnen twee jaar na aanleg van een straat.

Metro & tram



Alle tram- en metrolijnen, zoals ze voor en na 22 juli lopen, met historische foto's uit de Amsterdamse archieven.

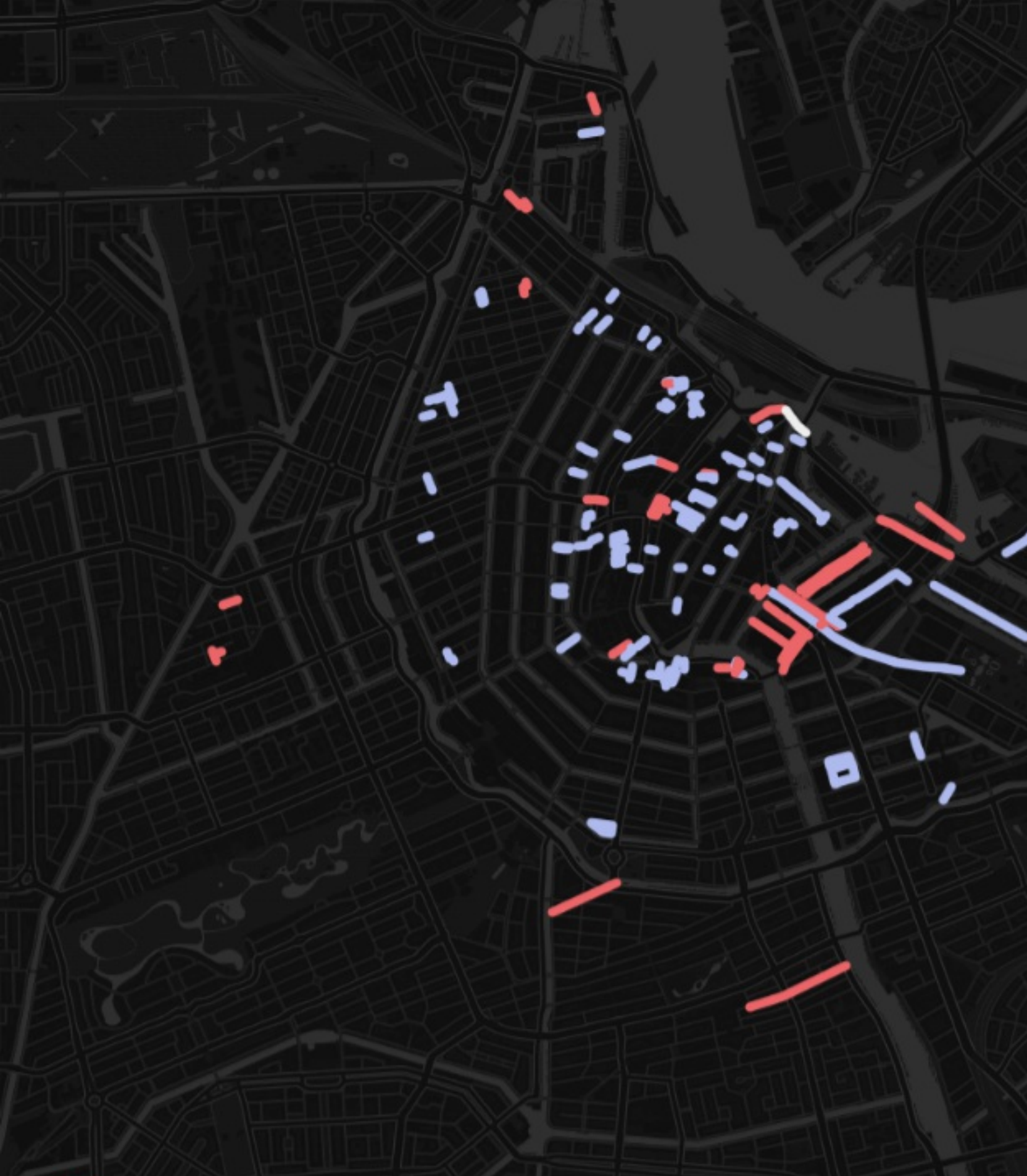
Straatbeelden



De straatbeelden - van verschillende Amsterdamse collecties - komen uit de Adamlink sparql endpoint, de straatgeometrie en het autocomplete afrolmenuutje uit de referentiedata.

Kamperhoofd

1500 - 1879



1880's | 1890's | 1900's | 1910's | 1920's | 1930's | 1940's | 1950's | 1960's | 1970's | 1980's | 1990's | 2000's

Amsterdams Pionieren 1920's

Hieronder het antwoord van AdamNet op de vraag 'geef alle afbeeldingen van straten die gemaakt zijn binnen twee jaar na aanleg van die straat'. We hopen daarmee een beeld van pionierend Amsterdam te kunnen laten zien, maar ook de mogelijkheden van het combineren van datasets (het [stratenregister](#) met beginjaren van straten en de Amsterdamse collecties in AdamNet). Klik op de straatnaam voor een kaartje en meer foto's.



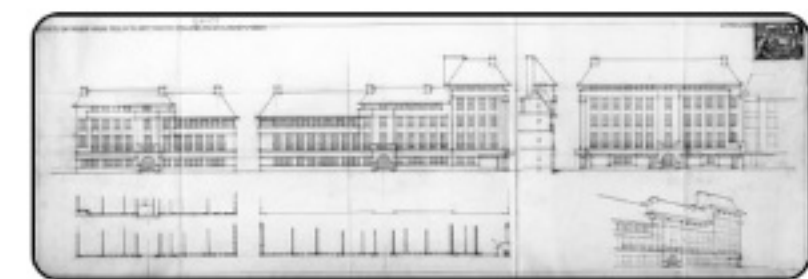
Cornelis Douwesweg 1925



Kramatweg 1927



Vechtstraat 1924



Brahmsstraat 1928





Data improvement

- ≡ Data is improved and enriched in the local workflows
- ≡ Should flow back to the original source
- ≡ Easier in smaller institutions/simpler infrastructures
 - ≡ Amsterdam Museum: adding adamlink location URIs
 - ≡ IISG introducing AAT for object types
- ≡ Complicated in larger institutions/complex infrastructures
 - ≡ International agreements (WorldCat)
 - ≡ Complex workflows/distribution of responsibilities



Take-aways

- ≡ Heterogeneous environment requires open and flexible platform
- ≡ Distribution vs. aggregation
 - ≡ Alignment issues
- ≡ Autonomous, informal team functions better than centralised hierarchical organisations
- ≡ Proof of concepts (apps) are vital for acceptance
- ≡ Data quality is key
- ≡ Differences in options for adding data improvements back to source
- ≡ Linked Data URI configuration needs to be implemented locally (content negotiation)



That's all Folks!