



národní  
úložiště  
šedé  
literatury

## **Vývoj indexů cen v zahraničním obchodě - 3. čtvrtletí 2014**

Český statistický úřad  
2014

Dostupný z <http://www.nusl.cz/ntk/nusl-261167>

Dílo je chráněno podle autorského zákona č. 121/2000 Sb.

Tento dokument byl stažen z Národního úložiště šedé literatury (NUŠL).

Datum stažení: 18.05.2024

Další dokumenty můžete najít prostřednictvím vyhledávacího rozhraní [nusl.cz](http://nusl.cz) .

## ANALYSIS

18 November 2014

### External Trade Price Indices Development in Q3 2014

**Export prices in Q3 2014, compared to Q2 2014, increased by 0.6%, import prices grew by 0.7%, and terms of trade reached 99.9%. Compared year-on-year (y-o-y) export prices in Q3 2014 increased by 4.7%, import prices grew by 2.8%, and terms of trade reached 101.8%.**

#### Quarter-on-quarter (q-o-q) comparison:

**Export prices in Q3 2014, compared to Q2 2014, increased by 0.6%** (in Q2 2014 they decreased by 0.3%). In export prices, among the more important groups of goods, prices increased most in 'chemicals and related products' by 1.6%, 'machinery and transport equipment' by 0.6%, in 'miscellaneous manufactured articles' and 'manufactured goods classified chiefly by material' identically by 0.5%. The prices of 'food and live animals' decreased by 1.5%, and those of 'mineral fuels, lubricants and related materials' by 0.6%.

**Import prices in Q3 2014, compared to Q2 2014, increased by 0.7%** (in Q2 2014 they decreased by 0.9%). In import prices highest price increases were recorded for 'miscellaneous manufactured articles' by 1.7%, 'machinery and transport equipment' by 1.4%, and for 'manufactured goods classified chiefly by material' by 1.3%. Prices of 'crude materials, inedible, except fuels' declined by 4.0%, and those of 'mineral fuels, lubricants and related materials' dropped by 2.4%.

The **terms of trade figures in Q3 2014, compared to Q2 2014, reached 99.9%** (in Q2 2014 they were 100.6%). Among important groups of goods, negative values of terms of trade were recorded namely in 'miscellaneous manufactured articles' (98.8%), and 'manufactured goods classified chiefly by material' and 'machinery and transport equipment' (identically 99.2%). Highest positive values of terms of trade were reached in 'crude materials, inedible, except fuels' (105.3%), and in 'mineral fuels, lubricants and related materials' (101.8%).

---

#### Information Services Unit – Headquarters

Are you interested in the latest data connected with inflation, GDP, population, wages and much more?

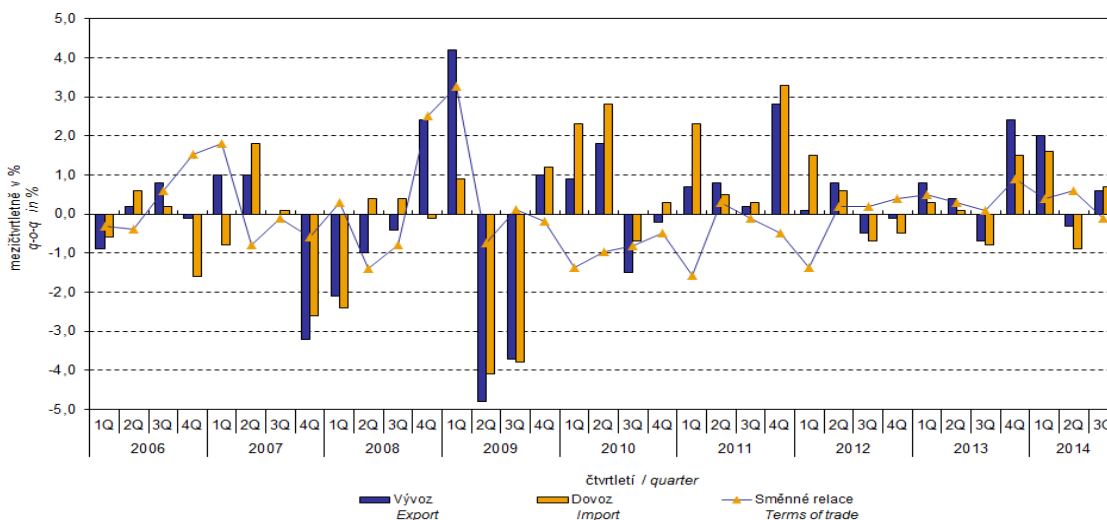
You can find them on pages of the Czech Statistical Office on the Internet: [www.czso.cz](http://www.czso.cz)

tel: +420 274 052 304, +420 274 052 425, e-mail: [infoservis@czso.cz](mailto:infoservis@czso.cz)

## ANALYSIS

Graf č. 1  
Graph No. 1

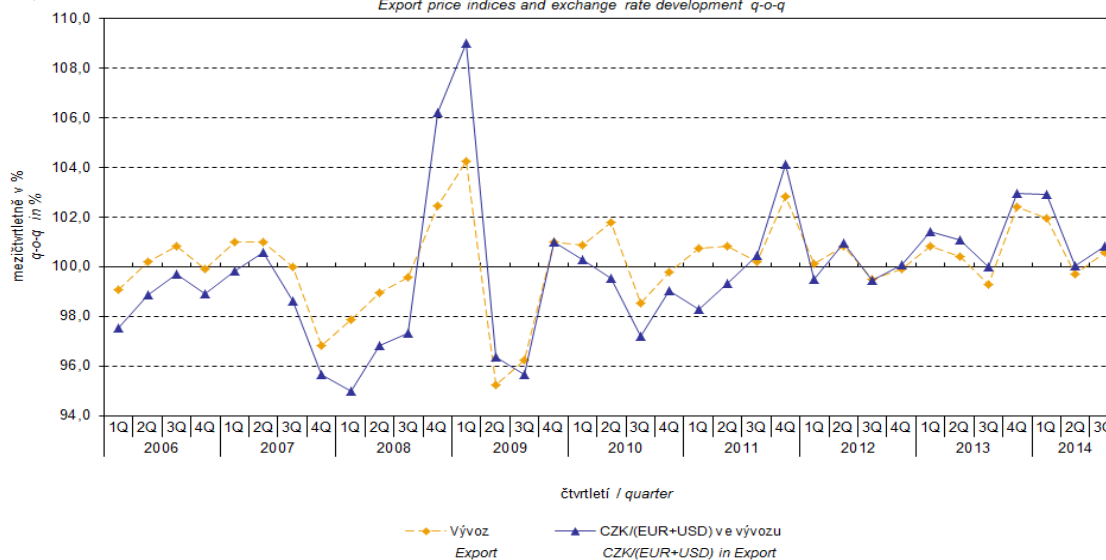
Vývoj cen v zahraničním obchodě mezičtvrtletně  
Price trends in external trade q-o-q



The external trade price development was also significantly affected by the CZK exchange rate to the major foreign currencies. The q-o-q exchange rate index includes two most important currencies from the Czech Republic's external trade point of view, i.e. EUR and USD. Q-o-q indices of the CZK exchange rate to these currencies were weighted by the weight, which pertains to those foreign currencies in the export price index and import price index, respectively.

Graf č. 2  
Graph No. 2

Indexy cen vývozu a vývoj kurzu mezičtvrtletně  
Export price indices and exchange rate development q-o-q



### Information Services Unit – Headquarters

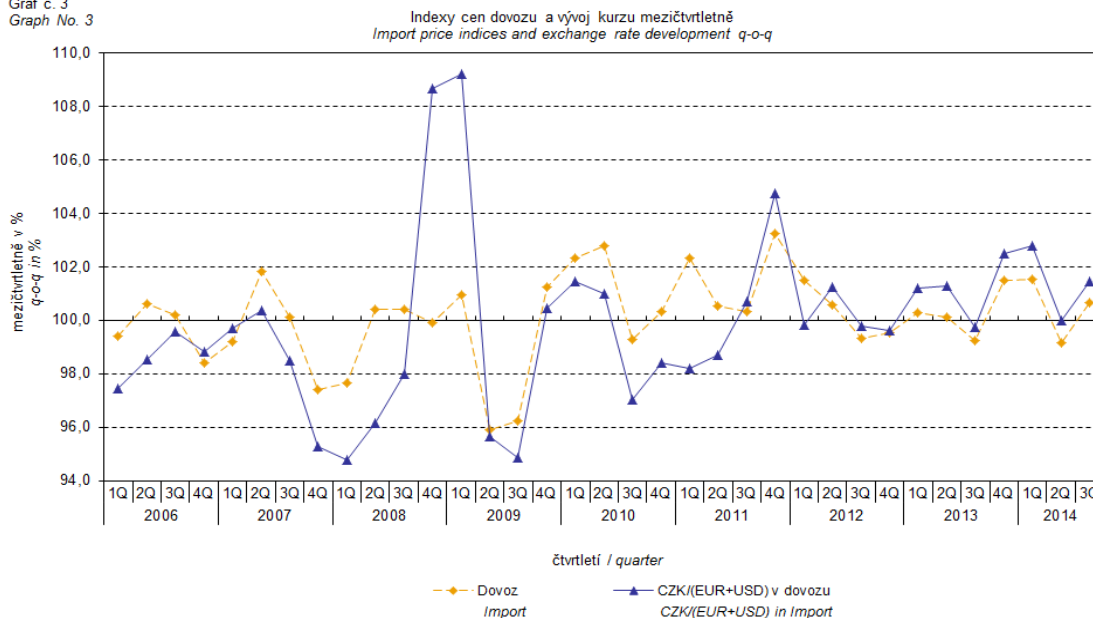
Are you interested in the latest data connected with inflation, GDP, population, wages and much more?

You can find them on pages of the Czech Statistical Office on the Internet: [www.czso.cz](http://www.czso.cz)

tel: +420 274 052 304, +420 274 052 425, e-mail: [infoservis@czso.cz](mailto:infoservis@czso.cz)

## ANALYSIS

Graf č. 3  
Graph No. 3



It can be seen from Graphs Nos. 2 and 3 above that in both cases of imports and exports external trade prices have a strong relation to exchange rate impacts. Contracts with foreign entities are, as a rule, signed for a longer period of time and the longer the contract period is, the stronger the relation to exchange rates is.

### Year-on-year (y-o-y) comparison:

**Export prices** in **Q3 2014** increased by 4.7% (in Q2 2014 they rose by 3.4%) year-on-year. Among more important groups of goods, the highest growth was reported for prices of 'crude materials, inedible, except fuels' by 8.7%, 'manufactured goods classified chiefly by material' by 6.4%, 'miscellaneous manufactured articles' by 5.2%, and of 'machinery and transport equipment' by 4.8%. On the contrary, prices of 'mineral fuels, lubricants and related materials' dropped by 5.8%.

**Import prices** in **Q3 2014** increased by 2.8% (in Q2 2014 they rose by 1.3%) year-on-year. A higher growth of prices among the more important groups was indicated for 'machinery and transport equipment' by 4.7%, 'manufactured goods classified chiefly by material' by 4.5%, and for 'food and live animals' by 3.7%. There were drops in prices observed in 'animal and vegetable oils, fats and waxes' by 8.5%, 'crude materials, inedible, except fuels' by 5.0%, and in 'mineral fuels, lubricants and related materials' by 4.1%.

**Terms of trade** in **Q3 2014** decreased year-on-year to reach the value of 101.8% (in Q2 2014 they were 102.1%) and thus they stayed in positive values for the seventh quarter – see Graph No. 4 below. More significant positive values of terms of trade were recorded in 'crude materials, inedible, except fuels' (114.4%), 'chemicals and related products' (102.2%), and in 'machinery and transport equipment' (100.1%). The lowest negative values of terms of trade

#### Information Services Unit – Headquarters

Are you interested in the latest data connected with inflation, GDP, population, wages and much more?

You can find them on pages of the Czech Statistical Office on the Internet: [www.czso.cz](http://www.czso.cz)

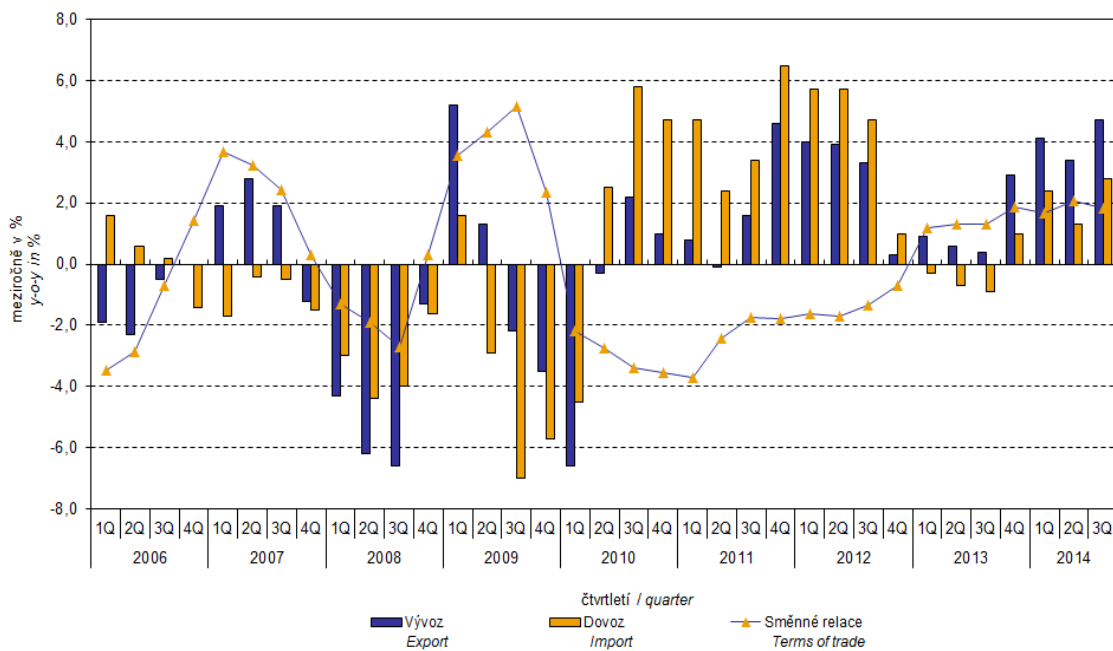
tel: +420 274 052 304, +420 274 052 425, e-mail: [infoservis@czso.cz](mailto:infoservis@czso.cz)

## ANALYSIS

were recorded for 'food and live animals' (97.8%) and 'mineral fuels, lubricants and related materials' (98.2%).

Graf č. 4  
Graph No. 4

Vývoj cen v zahraničním obchodě meziročně  
Price trends in external trade y-o-y



### Information Services Unit – Headquarters

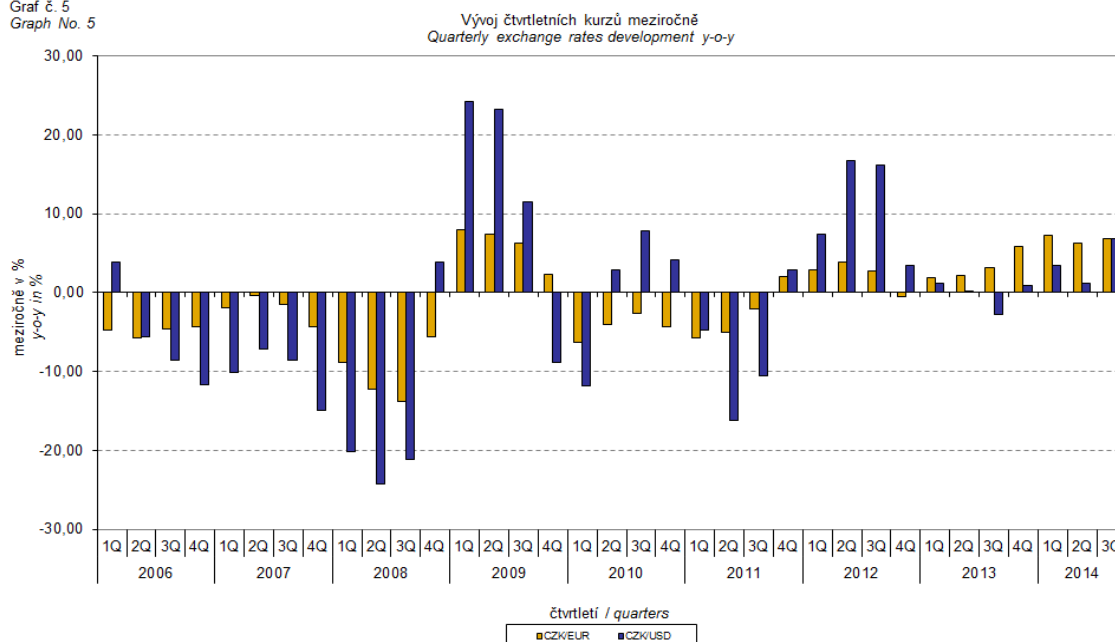
Are you interested in the latest data connected with inflation, GDP, population, wages and much more?

You can find them on pages of the Czech Statistical Office on the Internet: [www.czso.cz](http://www.czso.cz)

tel: +420 274 052 304, +420 274 052 425, e-mail: [infoservis@czso.cz](mailto:infoservis@czso.cz)

## ANALYSIS

Graf č. 5  
Graph No. 5



### External trade price indices adjusted y-o-y for exchange rate influence

The CZSO also carries out calculations of year-on-year external trade price indices adjusted for effects of exchange rate. The method is prices in foreign currencies reported in the current month are **converted** into Czech crowns by the **exchange rate** of the same month **of the last year**. Then they are used for the weighted mean calculation along with prices reported in CZK. The year-on-year adjusted price index is then calculated the way that this exchange rate adjusted base price index is related to the non-adjusted base price index of the same month of the last year. **Differences among adjusted and non-adjusted price indices may be substantial**. They can be clearly seen in Graphs Nos. 6 and 7 for November 2013 and December 2013, for instance.

The method employed does not enable, for many practical reasons, to carry out 100% exchange rate adjustment because all trade transactions concluded in foreign currencies are not reported in foreign currencies. This share is up to 30%. It follows from the aforementioned, that **at the full exchange rate adjustment differences** in between the price indices published and the exchange rate adjusted price indices would probably **be even larger**.

The aforementioned exchange rate adjusted indices can be used to form the exchange rate adjusted breakdown of price indices increments. Table 1, last but one page, gives the **published and exchange rate adjusted breakdowns of increments** of export and import price indices, expanded to the most important two-digit code groups of the SITC 7. These breakdowns illustrate, in a good manner, how many percentage points each of the groups "exchange rate contributed" to the index.

#### Information Services Unit – Headquarters

Are you interested in the latest data connected with inflation, GDP, population, wages and much more?

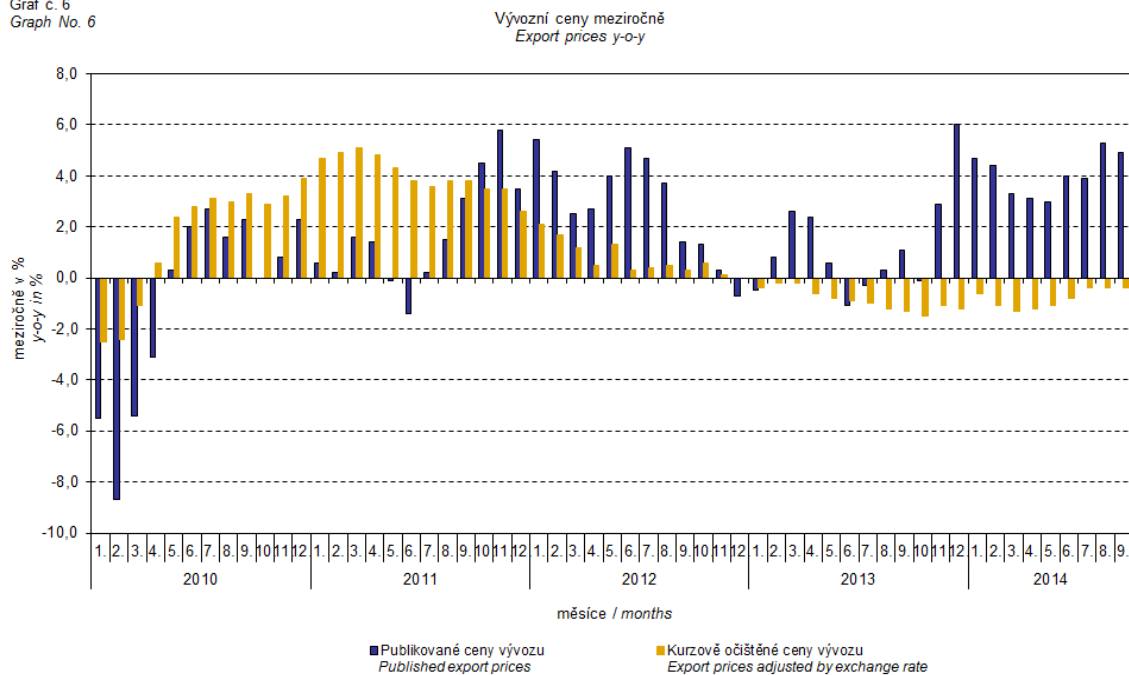
You can find them on pages of the Czech Statistical Office on the Internet: [www.czso.cz](http://www.czso.cz)

tel: +420 274 052 304, +420 274 052 425, e-mail: [infoservis@czso.cz](mailto:infoservis@czso.cz)

## ANALYSIS

It holds in general that the effects of exchange rate decrease the value of price indices in external trade if CZK is strengthening to foreign currencies in total. Conversely, the effects of exchange rate push the price indices up if CZK is weakening to foreign currencies in total. It is obvious from following Graphs Nos. 6 and 7 how significant was the exchange rate impact on the value of export and import price indices.

Graf č. 6  
Graph No. 6



### Information Services Unit – Headquarters

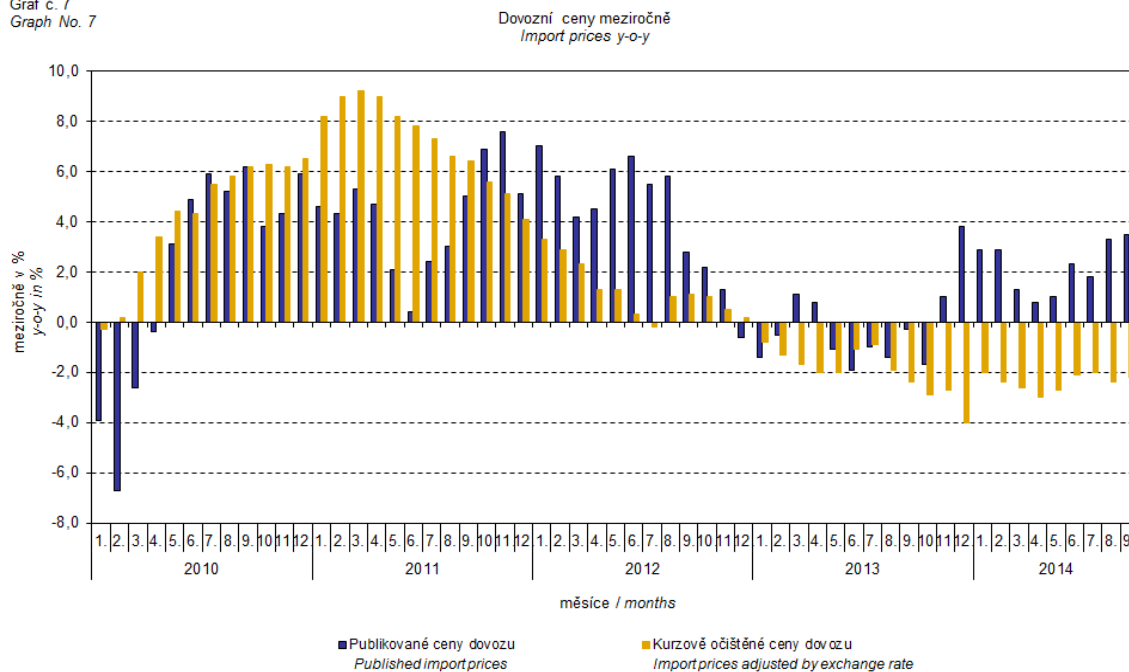
Are you interested in the latest data connected with inflation, GDP, population, wages and much more?

You can find them on pages of the Czech Statistical Office on the Internet: [www.czso.cz](http://www.czso.cz)

tel: +420 274 052 304, +420 274 052 425, e-mail: [infoservis@czso.cz](mailto:infoservis@czso.cz)

## ANALYSIS

Graf č. 7  
Graph No. 7



### Information Services Unit – Headquarters

Are you interested in the latest data connected with inflation, GDP, population, wages and much more?

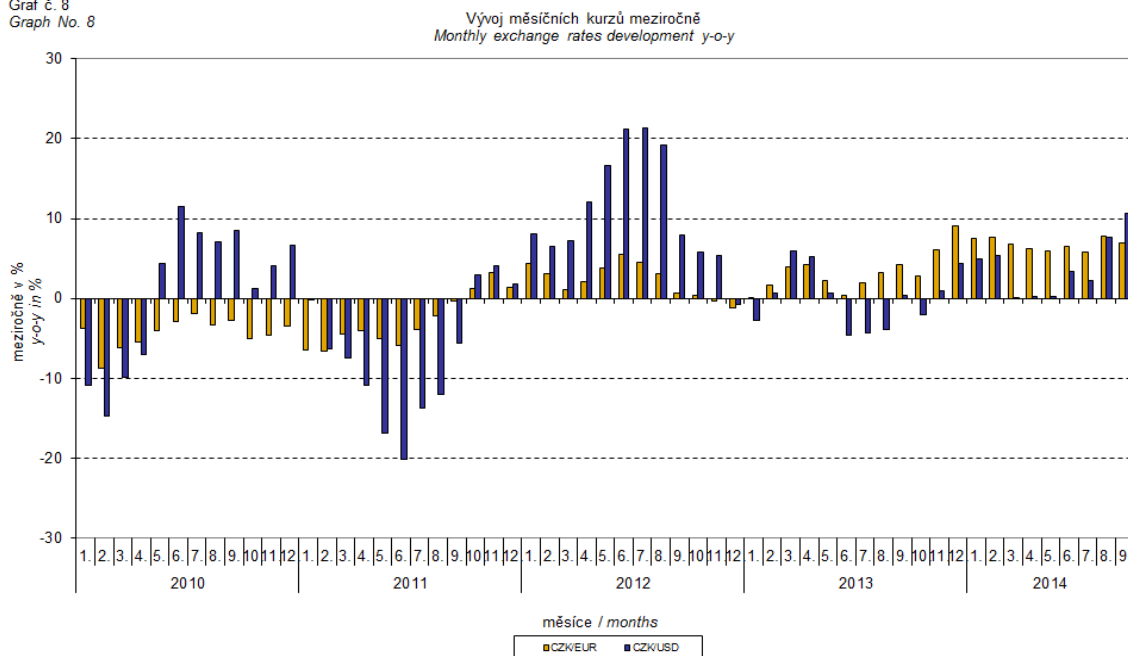
You can find them on pages of the Czech Statistical Office on the Internet: [www.czso.cz](http://www.czso.cz)

tel: +420 274 052 304, +420 274 052 425, e-mail: [infoservis@czso.cz](mailto:infoservis@czso.cz)

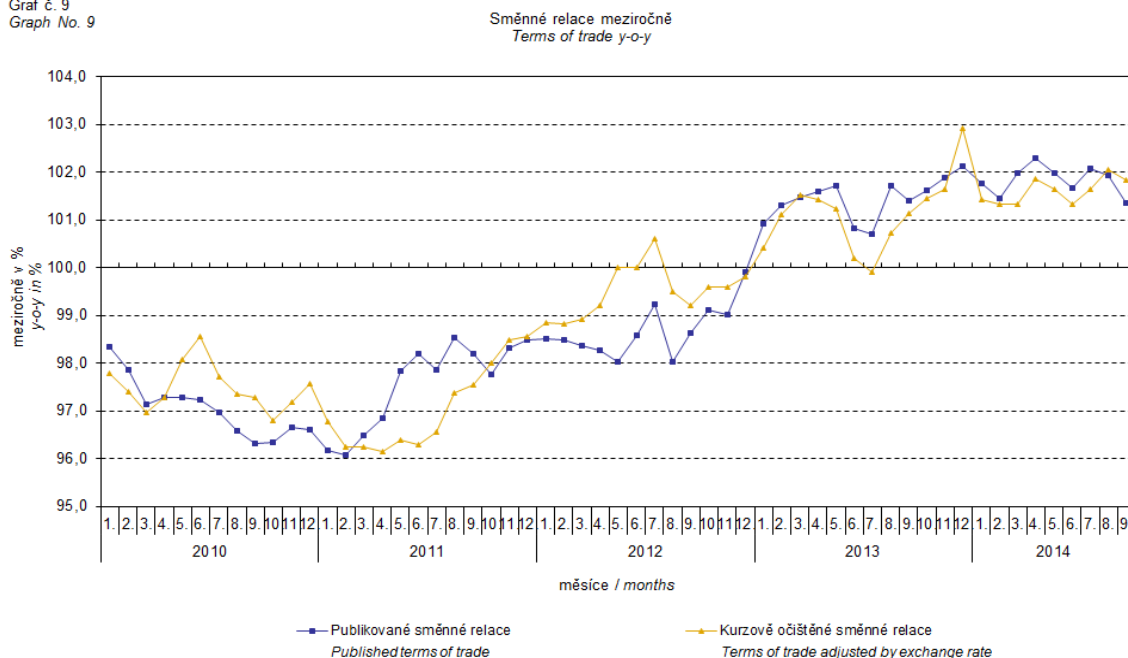


## ANALYSIS

Graf č. 8  
Graph No. 8



Graf č. 9  
Graph No. 9



It can be seen from Graph No. 9 how the exchange rate influences the value of the year-on-year terms of trade.

### Information Services Unit – Headquarters

Are you interested in the latest data connected with inflation, GDP, population, wages and much more?

You can find them on pages of the Czech Statistical Office on the Internet: [www.czso.cz](http://www.czso.cz)

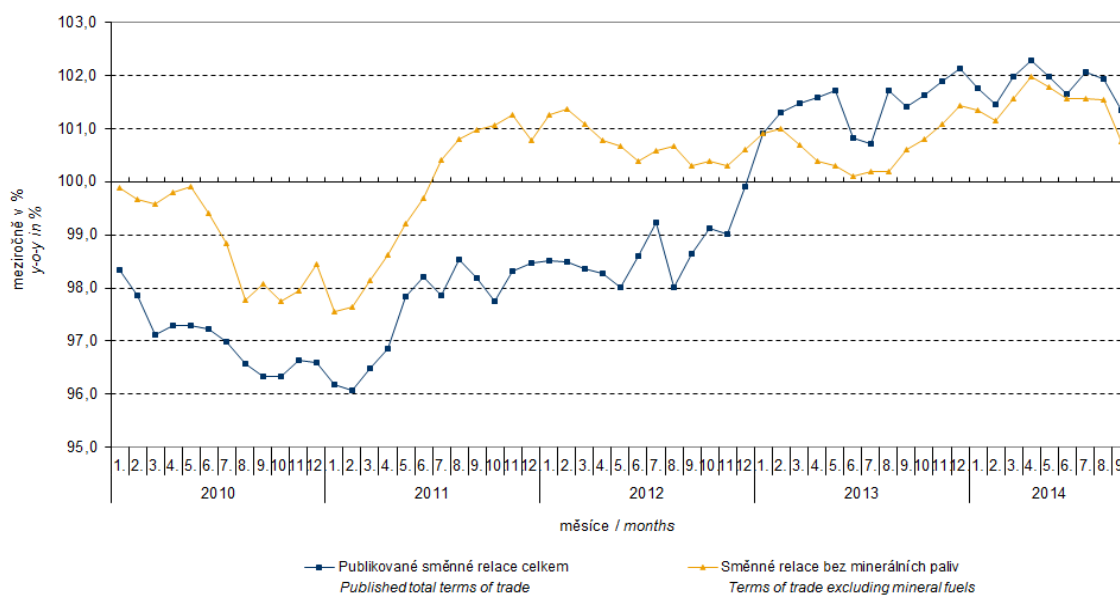
tel: +420 274 052 304, +420 274 052 425, e-mail: [infoservis@czso.cz](mailto:infoservis@czso.cz)

## ANALYSIS

Graph No. 10 demonstrates how the value of terms of trade would develop if the observed groups would not include that of 'mineral fuels, lubricants and related materials'.

Graf č. 10  
Graph No. 10

Publikované směnné relace a směnné relace s vyloučením minerálních paliv meziročně  
Published terms of trade and terms of trade excluding mineral fuels y-o-y



It can be observed in Graph No. 10 that 'mineral fuels, lubricants and related materials' were decreasing the overall value of y-o-y terms of trade till Q4 2012. In Q1 2013 the situation began to reverse and 'mineral fuels, lubricants and related materials' have had again an upward effect on the value of terms of trade. It is, of course, related to the world market price development, especially in crude oil. Import prices, which, compared to export prices, include a higher proportion of crude materials, respond in a more sensitive way to price turbulences and therefore when prices of crude materials go up, terms of trade, as a rule, go down and, conversely, when prices of crude materials fall, terms of trade grow.

### Closing summary

The exchange rate effects in **Q3 2014** caused a year-on-year increase in both import and export prices. If there would be no exchange rate effect, prices in external trade would be decreasing. Export prices were growing faster than the import ones, year-on-year, and therefore terms of trade remained in positive values. Yet if exchange rate adjusted, terms of trade would be growing faster. Values free of the exchange rate effects correspond to exchange rate adjusted indices – see graphs Nos. 6, 7, and 9.

#### Information Services Unit – Headquarters

Are you interested in the latest data connected with inflation, GDP, population, wages and much more?

You can find them on pages of the Czech Statistical Office on the Internet: [www.czso.cz](http://www.czso.cz)

tel: +420 274 052 304, +420 274 052 425, e-mail: [infoservis@czso.cz](mailto:infoservis@czso.cz)

## ANALYSIS

**Tabulka 1: Rozklad přírůstků publikovaných a kurzově očištěných indexů cen vývozu a dovozu za září 2014**  
**Table 1: Breakdown of export and import price indices - published and exchange rate adjusted for September 2014**

SITC	Název Name	Publikované Published				Očištěné Adjusted			
		Meziměsíční M-o-m	Meziroční Year-on-year			Meziměsíční M-o-m	Meziroční Year-on-year		
		09/2014	07/2014	08/2014	09/2014	09/2014	07/2014	08/2014	09/2014
<b>Rozklad přírůstků indexů vývozních cen</b> <i>Breakdown of export price indices</i>									
	<b>Celkem</b> <i>Total</i>	-0,5	3,9	5,3	4,9	0,0	-0,4	-0,4	-0,4
0	<b>Potraviny a živá zvířata</b> <i>Food and live animals</i>	0,0	0,0	0,1	0,0	0,0	0,0	0,0	0,0
1	<b>Nápoje a tabák</b> <i>Beverages and tobacco</i>	0,0	0,1	0,0	0,1	0,0	0,0	0,0	0,0
2	<b>Suroviny nepoživatelné, s výjimkou paliv</b> <i>Crude materials, inedible, except fuels</i>	0,0	0,2	0,3	0,3	0,0	0,2	0,2	0,2
3	<b>Minerální paliva, maziva a příbuzné materiály</b> <i>Mineral fuels, lubricants and related materials</i>	0,0	-0,1	-0,3	-0,3	0,1	-0,3	-0,4	-0,5
4	<b>Živočišné a rostlinné oleje</b> <i>Animal and vegetable oils, fats and waxes</i>	0,0	0,0	0,0	0,0	0,0	0,0	0,0	0,0
5	<b>Chemikálie a příbuzné výrobky</b> <i>Chemicals and related products</i>	-0,1	0,3	0,5	0,3	-0,1	0,0	0,0	-0,1
6	<b>Tržní výrobky tříděné hlavně podle materiálu</b> <i>Manufactured goods classified chiefly by material</i>	-0,2	1,0	1,2	1,2	-0,1	0,3	0,4	0,3
7	<b>Stroje a dopravní prostředky - z toho:</b> <i>Machinery and transport equipment - thereof:</i>	-0,2	1,9	2,9	2,7	0,1	-0,6	-0,5	-0,3
74	Stroje a zařízení všeobecně užívané v průmyslu, j.n. <i>General industrial machinery and equipment, n.e.s.</i>	0,0	0,3	0,5	0,4	0,0	-0,1	-0,1	-0,1
77	Elektrická zařízení, přístroje a spotřebiče, j.n. <i>Electrical machinery, apparatus and appliances, n.e.s.</i>	0,0	0,2	0,4	0,4	0,1	-0,1	-0,1	0,0
78	Silniční vozidla <i>Road vehicles (including air-cushion vehicles)</i>	-0,1	1,1	1,4	1,4	0,0	0,1	0,2	0,2
8	<b>Průmyslové spotřební zboží</b> <i>Miscellaneous manufactured articles</i>	0,0	0,5	0,6	0,6	0,0	0,0	-0,1	0,0
<b>Rozklad přírůstků indexů dovozních cen</b> <i>Breakdown of import price indices</i>									
	<b>Celkem</b> <i>Total</i>	0,0	1,8	3,3	3,5	0,2	-2,0	-2,4	-2,2
0	<b>Potraviny a živá zvířata</b> <i>Food and live animals</i>	0,0	0,2	0,2	0,2	0,0	0,0	0,0	0,0
1	<b>Nápoje a tabák</b> <i>Beverages and tobacco</i>	0,0	0,0	0,0	0,0	0,0	0,0	0,0	0,0
2	<b>Suroviny nepoživatelné, s výjimkou paliv</b> <i>Crude materials, inedible, except fuels</i>	0,0	-0,1	-0,1	-0,1	0,0	-0,2	-0,2	-0,3
3	<b>Minerální paliva, maziva a příbuzné materiály</b> <i>Mineral fuels, lubricants and related materials</i>	0,0	-0,3	-0,6	-0,6	0,0	-0,7	-1,3	-1,5
4	<b>Živočišné a rostlinné oleje</b> <i>Animal and vegetable oils, fats and waxes</i>	0,0	0,0	0,0	0,0	0,0	0,0	0,0	0,0
5	<b>Chemikálie a příbuzné výrobky</b> <i>Chemicals and related products</i>	-0,1	0,2	0,4	0,3	0,0	-0,2	-0,2	-0,2
6	<b>Tržní výrobky tříděné hlavně podle materiálu</b> <i>Manufactured goods classified chiefly by material</i>	0,0	0,6	0,9	0,9	0,0	-0,1	-0,1	0,0
7	<b>Stroje a dopravní prostředky - z toho:</b> <i>Machinery and transport equipment - thereof:</i>	0,0	1,1	2,2	2,4	0,1	-0,6	-0,4	-0,1
74	Stroje a zařízení všeobecně užívané v průmyslu, j.n. <i>General industrial machinery and equipment, n.e.s.</i>	0,0	0,3	0,4	0,4	0,0	0,0	0,0	0,0
75	Kancelářské stroje a zař. k automat. zpracování dat <i>Office machines and automatic data-processing machines</i>	0,1	0,1	0,3	0,5	0,0	0,0	0,0	0,2
77	Elektrická zařízení, přístroje a spotřebiče, j.n. <i>Electrical machinery, apparatus and appliances, n.e.s.</i>	0,0	0,6	0,9	0,9	0,0	0,1	0,2	0,2
78	Silniční vozidla <i>Road vehicles (including air-cushion vehicles)</i>	0,0	0,0	0,1	0,2	0,1	-0,3	-0,3	-0,2
8	<b>Průmyslové spotřební zboží</b> <i>Miscellaneous manufactured articles</i>	0,1	0,1	0,3	0,4	0,1	-0,2	-0,2	-0,1

### Information Services Unit – Headquarters

Are you interested in the latest data connected with inflation, GDP, population, wages and much more?

You can find them on pages of the Czech Statistical Office on the Internet: [www.czso.cz](http://www.czso.cz)

tel: +420 274 052 304, +420 274 052 425, e-mail: [infoservis@czso.cz](mailto:infoservis@czso.cz)

## ANALYSIS

Closing table gives published external trade price indices **without adjustment**.

Tabulka 2: Indexy cen vývozu a dovozu ve 3. čtvrtletí 2014

Table 2: Export and import price indices in Q3 2014

SITC	Název Name	Stejně období předchozího roku = 100 Corresponding period of previous year = 100				
		2Q/2014	07/2014	08/2014	09/2014	3Q/2014
<b>Indexy vývozních cen</b> Export price indices						
	<b>Celkem</b> Total	103,4	103,9	105,3	104,9	104,7
0	<b>Potraviny a živá zvířata</b> Food and live animals	100,6	100,6	101,9	101,5	101,4
1	<b>Nápoje a tabák</b> Beverages and tobacco	112,2	106,4	107,5	106,5	106,8
2	<b>Suroviny nepoživatelné, s výjimkou paliv</b> Crude materials, inedible, except fuels	103,3	107,7	109,4	109,0	108,7
3	<b>Minerální paliva, maziva a příbuzné materiály</b> Mineral fuels, lubricants and related materials	95,5	95,8	93,6	93,1	94,2
4	<b>Živočišné a rostlinné oleje</b> Animal and vegetable oils, fats and waxes	96,3	95,5	96,9	96,9	96,4
5	<b>Chemikálie a příbuzné výrobky</b> Chemicals and related products	102,5	104,5	106,8	104,2	105,2
6	<b>Tržní výrobky tříděné hlavně podle materiálu</b> Manufactured goods classified chiefly by material	105,2	105,3	107,0	106,7	106,4
7	<b>Stroje a dopravní prostředky</b> Machinery and transport equipment	103,3	103,5	105,5	105,2	104,8
8	<b>Průmyslové spotřební zboží</b> Miscellaneous manufactured articles	104,4	104,5	105,5	105,6	105,2
<b>Indexy dovozních cen</b> Import price indices						
	<b>Celkem</b> Total	101,3	101,8	103,3	103,5	102,8
0	<b>Potraviny a živá zvířata</b> Food and live animals	105,4	103,5	103,9	103,7	103,7
1	<b>Nápoje a tabák</b> Beverages and tobacco	103,3	101,1	102,7	104,2	102,6
2	<b>Suroviny nepoživatelné, s výjimkou paliv</b> Crude materials, inedible, except fuels	95,3	94,2	94,8	95,9	95,0
3	<b>Minerální paliva, maziva a příbuzné materiály</b> Mineral fuels, lubricants and related materials	97,0	97,6	95,4	94,7	95,9
4	<b>Živočišné a rostlinné oleje</b> Animal and vegetable oils, fats and waxes	92,1	89,8	92,4	92,4	91,5
5	<b>Chemikálie a příbuzné výrobky</b> Chemicals and related products	101,1	102,0	103,7	103,0	102,9
6	<b>Tržní výrobky tříděné hlavně podle materiálu</b> Manufactured goods classified chiefly by material	102,3	103,4	105,1	105,1	104,5
7	<b>Stroje a dopravní prostředky</b> Machinery and transport equipment	102,2	102,8	105,4	106,0	104,7
8	<b>Průmyslové spotřební zboží</b> Miscellaneous manufactured articles	100,8	101,6	103,3	104,3	103,0

Developed by: Vladimír Klimeš, Prices Statistics Department

Director of the Department: Jiří Mrázek, telephone: (+420) 274 052 533

### Information Services Unit – Headquarters

Are you interested in the latest data connected with inflation, GDP, population, wages and much more?

You can find them on pages of the Czech Statistical Office on the Internet: [www.czso.cz](http://www.czso.cz)

tel: +420 274 052 304, +420 274 052 425, e-mail: [infoservis@czso.cz](mailto:infoservis@czso.cz)