



národní  
úložiště  
šedé  
literatury

## **Beer Foam as a Multiphase System**

Růžička, Marek  
2015

Dostupný z <http://www.nusl.cz/ntk/nusl-181144>

Dílo je chráněno podle autorského zákona č. 121/2000 Sb.

Tento dokument byl stažen z Národního úložiště šedé literatury (NUŠL).

Datum stažení: 23.08.2024

Další dokumenty můžete najít prostřednictvím vyhledávacího rozhraní [nusl.cz](http://www.nusl.cz) .

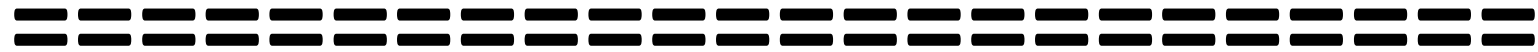
# Beer foam as a multiphase system

**Marek Růžička**

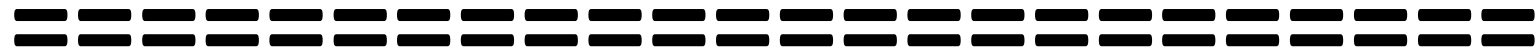
Department of Multiphase Reactors  
Institute of Chemical Process Fundamentals  
Czech Academy of Sciences  
[www.icpf.cas.cz](http://www.icpf.cas.cz)

## Contents

- 1. "Multi-Phase"**
- 2. Gushing: prelude**



# Part 1. Multi-Phase systems



**Basic orientation**

# I. Definition of Multi-Phase

## 1. Intuitive

"Multiphase flow is when water flows together with bubbles, drops, and particles."

## 2. Exact

Phase = macroscopically distinguishable material substance  
immiscible with others.

*macro* - bulk system, continuum,

*immiscible* - separation, no dissolution.

- a) Continuous phase - fluid phase carrying 'particles' (fluid = gas, liquid),
- b) Discrete phase(s) - dispersed 'particles' (bubbles, drops, solids).

# Examples - phases

Three states of matter: gas, liquid, solid  
(NOT water + salt: microscopic, true chemical solution)

Two liquids: water + oil (NOT water + ethanol, miscible)

Two gases: NO (miscible, no interface tension!)

Two solids: peas + ashes /hrách + popel/

# Ms. Popelka /Cinderella



A multiphase researcher in dry granular media,  
system gas-solid-solid, namely phase-separation aspects

## II. Multi-Phase abounds

### 1. Natural systems

Two main continuous phases: air & water (ev. two more fire + ether)

#### Air (gas)

- aerosols (g-l-s),
- rain (g-l),
- snow (g-s),
- volcano (g-s-f)                      f - fire /plasma state/
- fires (g-f-s)
- soil, sand, rocks, ... (g-s) granular system /dry or wet/
- people, animals, ... (g-s) /particles, bodies dispersed in air/
- solar, galactic, universal, cosmic systems (s-e) e - ether /'dark matter template'/

# Water (liquid)

- sea waters (l-s-g):

g - bubbles of CO<sub>2</sub>, CH<sub>4</sub> - carbon cycles,

s - sediments, fish, submarines, icebergs, ...

l - drops of oil,

- fresh waters: ... similar ....



## 2. Man-made (artificial) systems

### **All technologies:**

- to contact phases,
- inter-phase transport processes (mass, momentum, energy),
- reaction phenomena (old / new compounds),
- separation steps (wanted / unwanted substances),
- concentrate / dilute,
- use, consume, waste.

# Example

## Beer *(un-filtered)*

l-g-s double-three phase system

**Liquid** (golden): water (true solution) + bubbles + yeast ('particles')

**Foam** (silver): gas (near 100% volume) + liquid films + yeast

***"The Golden-Silver One"***

## Note

Foams = stable bubbles

Liquid film drainage is suppressed by surface gradients of surface tension, produced by surface gradients of surfactant concentration (Marangoni effects).

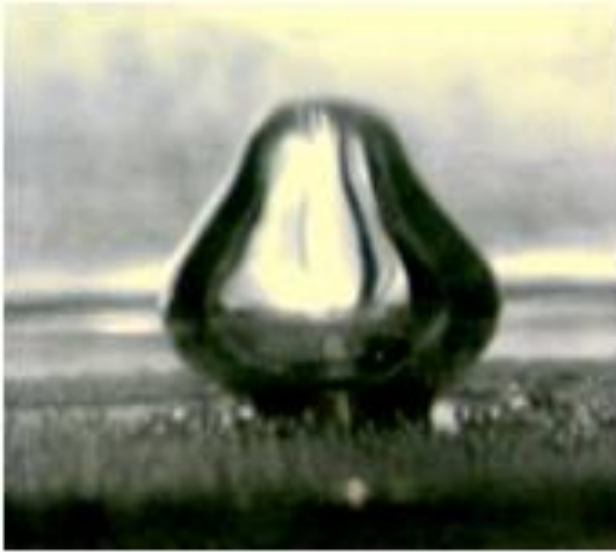
# Department of Multiphase Reactors

- g-l bubble columns, aerated systems,  
bubble formation, rise, coalescence, breakup
- g-l-s fermenters, flotation,
- s-l sedimentation,
- s-g granular matter (powders - many of !),
- g-l foams.

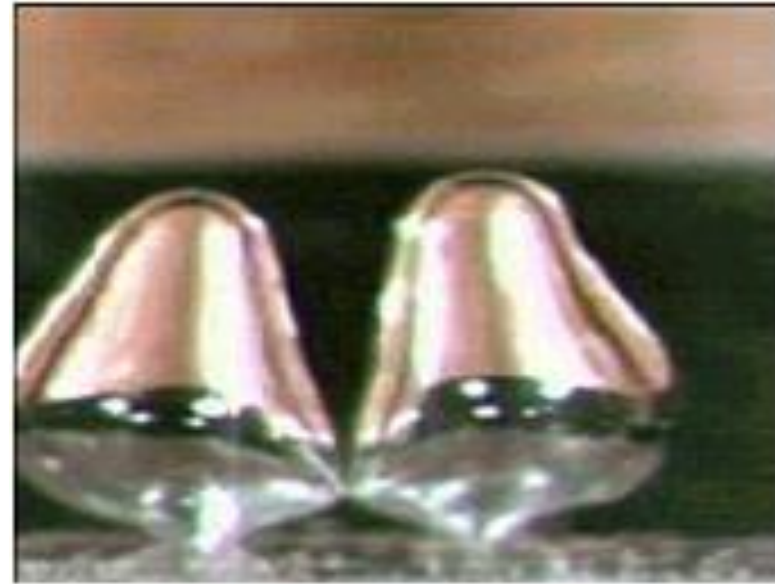
***Some pictures on bubbles ...***

## Bubble formation

Single orifice



Two orifices - close spacing



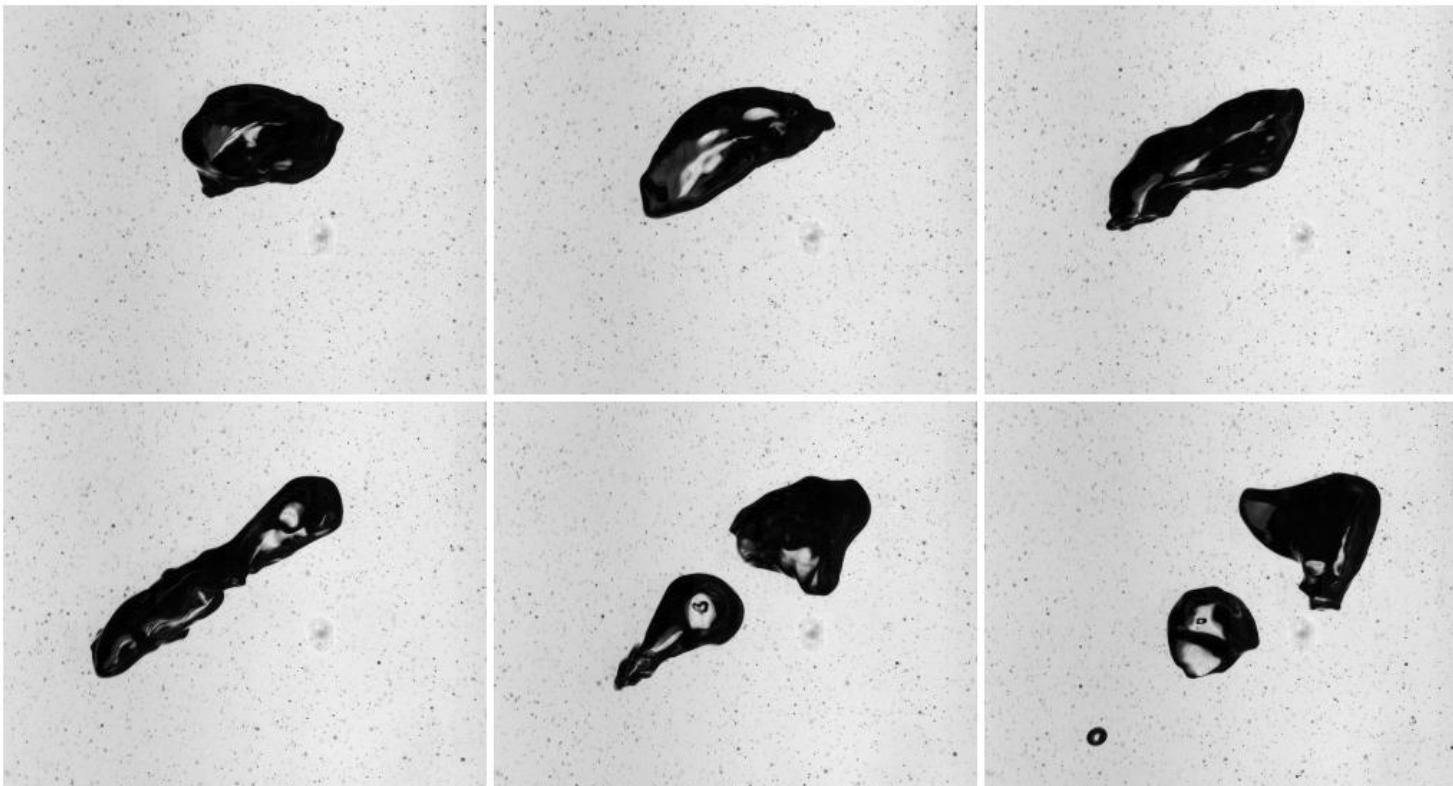
Two orifices - distant spacing



## Bubble coalescence

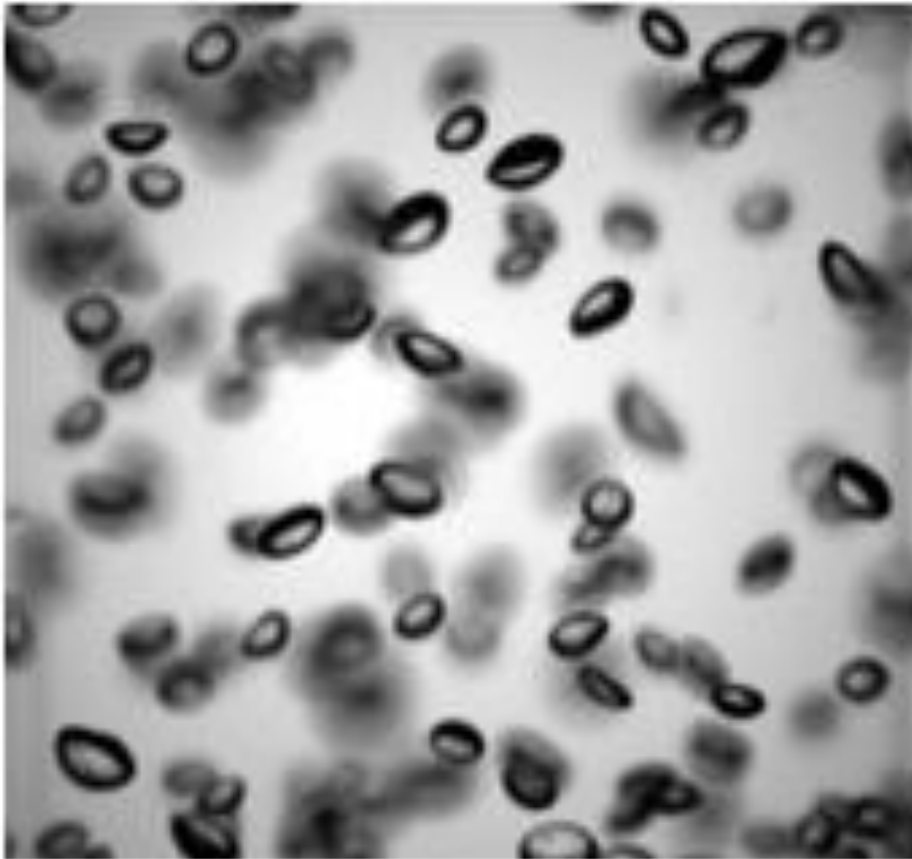


## Bubble breakup



# Bubble dispersion

Diluted

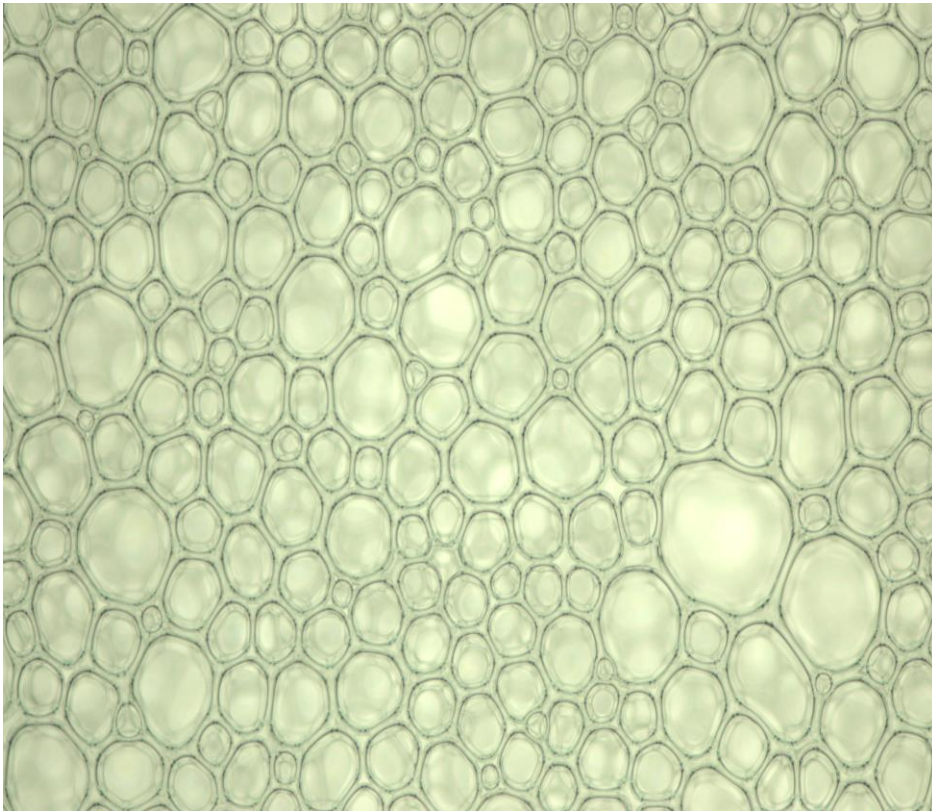


Dense

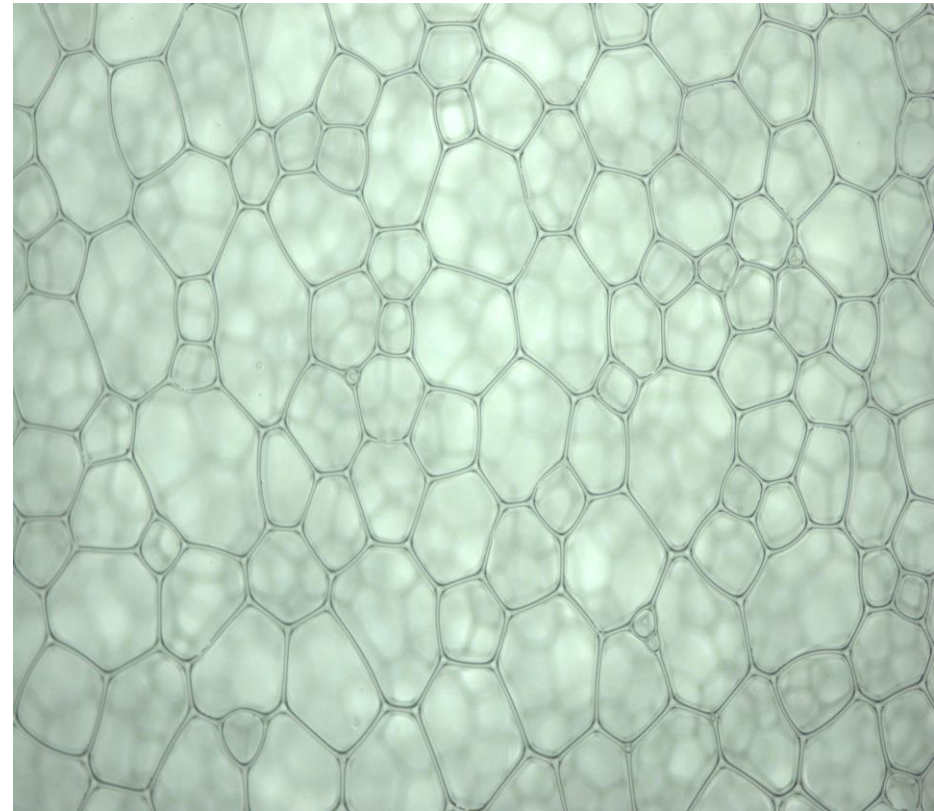


# Bubble foam

Wet



Dry



---

---

## Part 2. Gushing experiments: How to begin ?

---

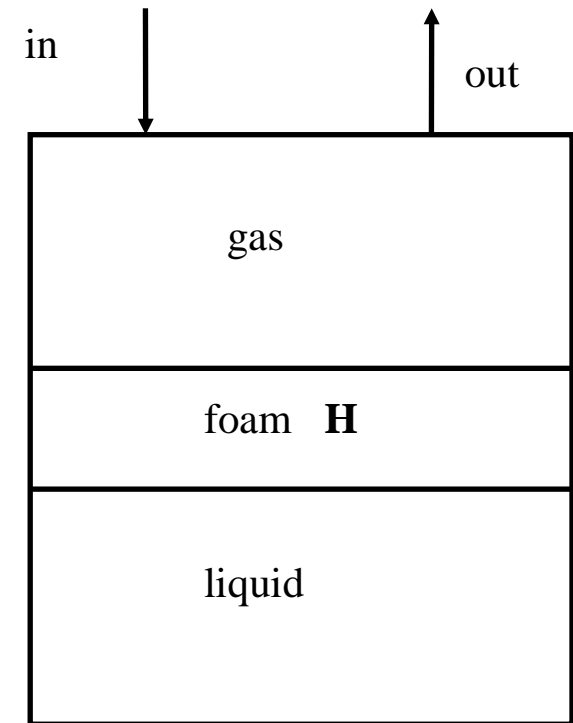
---

**Didactical guide - not only for students**



# Desaturation cell - measuring apparatus

- glass cylinder for low pressures of CO<sub>2</sub> gas (3-10 bars),
- liquid sample (beer) for foam production,
- procedure: liquid saturation and desaturation  
(shaking) (cell opening)
- measured data: visual (video) + pressure (transducer),
- results: foam production dynamics,  $p(t)$ ,  $h(t)$



→ → → **max foam height H, mean growth rate R**

# 1. Parameters describing the system

## **Experimental cell**

- shape,
- dimensions,
- working volume,
- sample volume.

## **Ambient conditions**

- temperature, pressure, humidity, light conditions, contaminants, ...

## **Solutions**

- foaming agent (chemical substance),
- producer and type,
- way of storage,
- concentration (relevant units, grams x moles),
- solution preparation (fresh x stored) and conditioning,
- solution use (single x multiple).

## **Operation parameters**

- saturation pressure,
- sample motion (shaking x sloshing, frequency, amplitude),
- saturation time,
- valve opening time (manual x solenoid valve - PC).

## 2. Definition of "Reference State" [RS]

|                      |                             |
|----------------------|-----------------------------|
| Sample volume:       | $V = 0.5 \text{ l}$ ,       |
| Ambient conditions:  | laboratory,                 |
| Foaming agent:       | BSA (model substance),      |
| Concentration:       | $c = 0.5 \text{ g/l}$ ,     |
| Solution:            | fresh, single use,          |
| Saturation pressure: | $p_0 = 3 \text{ bar}$ ,     |
| Saturation time:     | $T_{AB} = 45 \text{ min}$ , |
| Valve opening:       | PC-controlled.              |

# 3. Performing experiments

## **Data acquisition**

- pressure signal (sensor - parameters, T-scales, A/D converter),
- video (parameters: resolution, pixel/mm, optical distortion, synchron.),
- precision, sensitivity, errors, reproducibility.

## **Data treatment**

- pressure signals (Volts into Pascals, time series-p, diagrams),
- videos (pixels into mm, time series-h, diagrams),
- errors, statistics, mean values, deviations, function of random variables.

## **Results**

- results:  $p(t)$ ,  $h(t)$ ,  $H$ ,  $R$ ,
- range of validity, reliability, robustness.

## 4. Basic rules for experiments

Start with "Reference State": test its stability and reproducibility.

Never change more than 1 parameter (in words: 'one').

When in problems, resort to "RS" - the only 'fixed point' in Universe.

# 5. Basic test measurements

Purpose: mapping the neighbourhood of "RS" in parameter space.

***"What would happen, if I make a little error in measurements ?"***

But not only !

Test the foaming agent BSA: effect of source, storage, ...

Test the solution: single x multiple use.

Test the mode of saturation: frequency + amplitude of shaking, time period.

Test the mode of cell opening: rate of gas release.

Test the effect of saturation pressure.

## **6. Planning experiments and 'doing science'**

**Only now**

**you may carefully plan**

**your live 'research' measurements :)**

### **Acknowledgements**

The financial support by the Ministry of the Czech Republic - MSMT (Project No. LD-13018) is gratefully acknowledged.