



národní
úložiště
šedé
literatury

Forecasting Czech GDP Using Mixed-Frequency Data Models

Franta, Michal; Havrlant, David; Rusnák, Marek
2014

Dostupný z <http://www.nusl.cz/ntk/nusl-178229>

Dílo je chráněno podle autorského zákona č. 121/2000 Sb.

Tento dokument byl stažen z Národního úložiště šedé literatury (NUŠL).

Datum stažení: 10.04.2024

Další dokumenty můžete najít prostřednictvím vyhledávacího rozhraní nusl.cz.

WORKING PAPER SERIES 8

Michal Franta, David Havrlant, Marek Rusnák:
Forecasting Czech GDP Using Mixed-Frequency Data Models

2014

WORKING PAPER SERIES

Forecasting Czech GDP Using Mixed-Frequency Data Models

Michal Franta
David Havrlant
Marek Rusnák

8/2014

CNB WORKING PAPER SERIES

The Working Paper Series of the Czech National Bank (CNB) is intended to disseminate the results of the CNB's research projects as well as the other research activities of both the staff of the CNB and collaborating outside contributors, including invited speakers. The Series aims to present original research contributions relevant to central banks. It is refereed internationally. The referee process is managed by the CNB Research Department. The working papers are circulated to stimulate discussion. The views expressed are those of the authors and do not necessarily reflect the official views of the CNB.

Distributed by the Czech National Bank. Available at <http://www.cnb.cz>.

Reviewed by: Claudia Foroni (Norges Bank)
Ana Beatriz Galvão (Warwick Business School)
Oxana Babecká Kucharčuková (Czech National Bank)

Project Coordinator: Kamil Galuščák

© Czech National Bank, November 2014
Michal Franta, David Havrlant, Marek Rusnák

Forecasting Czech GDP Using Mixed-Frequency Data Models

Michal Franta, David Havrlant, and Marek Rusnák*

Abstract

In this paper we use a battery of various mixed-frequency data models to forecast Czech GDP. The models employed are mixed-frequency vector autoregressions, mixed-data sampling models, and the dynamic factor model. Using a dataset of historical vintages of unrevised macroeconomic and financial data, we evaluate the performance of these models over the 2005–2012 period and compare them with the Czech National Bank's macroeconomic forecasts. The results suggest that for shorter forecasting horizons the accuracy of the dynamic factor model is comparable to the CNB forecasts. At longer horizons, mixed-frequency vector autoregressions are able to perform similarly or slightly better than the CNB forecasts. Furthermore, moving away from point forecasts, we also explore the potential of density forecasts from Bayesian mixed-frequency vector autoregressions.

Abstrakt

V tomto článku pracujeme se sadou modelů využívajících data různých frekvencí a na jejich základě predikujeme HDP České republiky. Použité modely zahrnují vektorové autoregrese pro různé frekvence, modely dat různých smplovacích frekvencí a dynamický faktorový model. Za použití historických časových řad nerevidovaných makroekonomických a finančních indikátorů hodnotíme přesnost těchto modelů pro období let 2005–2012 a srovnáváme ji s makroekonomickými predikcemi České národní banky (ČNB). Výsledky naznačují, že přesnost dynamického faktorového modelu je pro kratší horizonty predikce srovnatelná s predikcemi ČNB. Na delším horizontu jsou pak modely vektorové autoregrese pro různé frekvence srovnatelné nebo dokonce nepatrně lepší než predikce ČNB. Kromě bodových predikcí také zkoumáme potenciál predikcí hustot HDP vycházejících z bayesovské vektorové autoregrese pro různé frekvence.

JEL Codes: C53, C82, E52.

Keywords: GDP, mixed-frequency data, real-time data, short-term forecasting.

* Michal Franta, Czech National Bank, michal.franta@cnb.cz;

David Havrlant, Czech National Bank, dhavrlant@gmail.com;

Marek Rusnák, Czech National Bank and Institute of Economic Studies, Charles University, Prague, marek.rusnak@cnb.cz.

We acknowledge support from the Czech National Bank (Project No. B6/13), Rusnák acknowledges support from Grant Agency of Charles University (#888413). We thank Marta Bańbura and Eric Ghysels for sharing parts of their Matlab codes. We also thank Oxana Babecká Kucharčuková, Claudia Foroni, Ana Beatriz Galvão, and seminar participants at the Czech National Bank for their helpful comments. The views expressed here are those of authors and not necessarily those of the Czech National Bank.

Nontechnical Summary

For central banks to be able to implement monetary policy successfully, the ability to forecast the current and future macroeconomic environment is crucial. This paper looks at models that produce such forecasts and evaluates the precision of the forecasts produced in real time. Real-time forecasters need to tackle several specific issues. First, some macroeconomic indicators are published with a significant lag. For example, GDP for a particular quarter is released in the third month of the next quarter. Second, the data used for forecasting are usually available at various sampling frequencies. So, forecasters work with daily data (e.g. the exchange rate), monthly data (e.g. industrial production, unemployment), and quarterly data (e.g. GDP). Finally, real-time forecasters face the fact that macroeconomic aggregates are revised (sometimes substantially) by statistics bureaus.

In this paper, we use a battery of various models that have been developed only recently and that are able to deal with these issues. The models applied include mixed-frequency vector autoregressions (MF-VAR), mixed-data sampling models (MIDAS), and the dynamic factor model (DFM). We employ these models to produce forecasts of GDP, which is the main indicator of the state of the economy.

The main focus is on assessing the forecasting ability of the selected approaches in the case of Czech GDP. In order to facilitate comparison with the macroeconomic forecasts produced by the Czech National Bank (CNB), we collect a dataset of historical vintages of unrevised macroeconomic variables. The nature of the models used allows us to include financial indicators such as interest rates, credit growth, and stock market growth. In order to exploit timely information we also add survey indicators about industry and consumer confidence. Finally, to capture the fact that the Czech economy is a small open economy, we also make use of several foreign indicators covering macroeconomic, survey, and financial variables. Using this dataset, we evaluate the forecasting performance of these models over the 2005–2012 period.

The results suggest that for shorter forecasting horizons the accuracy of the dynamic factor model is comparable to the CNB forecasts. At longer horizons, mixed-frequency vector autoregressions are able to perform similarly or slightly better than the CNB forecasts. Regarding nowcasting it turns out that the precision of point forecasts generally increases as new information becomes available over the nowcasting period. Finally, we investigate the potential of density nowcasts from Bayesian mixed-frequency vector autoregressions. We show that the uncertainty related to GDP nowcasts decreases over the nowcasting period as additional information from the underlying indicators becomes available.

1. Introduction

Forecasting is one of the key tasks of central banks, as monetary policy decision-making draws heavily on expected future developments in the economy. The role of forecasting is especially important for inflation targeting central banks, which set their policy rates so as to guarantee that the inflation forecast is close to the target at a given monetary policy horizon. The accuracy of the inflation outlook depends on appropriate estimation of the current and future values of other macroeconomic indicators. In this respect, GDP – an indicator of the performance of the economy – is one of the most important variables.

An important aspect of forecasting is that the time series used in the forecasting process are often available at various sampling frequencies. For example, GDP is published quarterly, whereas labor market data are available monthly and financial data even daily. Most of the standard forecasting models assume that the data are sampled at the same frequency. As a consequence, higher frequency data are in practice typically aggregated to a lower frequency. There are, however, costs of ignoring the availability of high frequency data in the forecasting process. First, we lose information through temporal aggregation. Second, we lose the opportunity of providing real-time forecast updates at a higher frequency (e.g. every month when forecasting a quarterly indicator). Another aspect related especially to real-time forecasting is that the datasets available at a particular point in time are unbalanced. These ragged-edge datasets are the consequence of different frequencies per se and, in addition, the result of different publication lags for particular time series.

In this paper, we evaluate the performance of commonly used mixed-frequency models when nowcasting and forecasting GDP in real-time. We consider the following mixed-frequency data models recently proposed in the forecasting literature: mixed-data sampling (MIDAS), mixed-frequency vector autoregression (MF-VAR), and the dynamic factor model (DFM). MIDAS is a univariate approach that uses distributed lag polynomials, thus yielding a parsimonious specification suitable for forecasting. MF-VAR is a multivariate system that is set up as if all the data were available at the highest frequency in the dataset regardless of whether or not all the data points are observable. Finally, the DFM exploits comovements among macroeconomic variables by assuming that they are driven by a small number of unobserved factors.¹

Our evaluation focuses on the nowcasting and forecasting of Czech GDP. In order to assess the value of these models for practical use within the forecasting process in the central bank, we design our forecasting exercises so that the accuracy of the models can be compared with the macroeconomic forecasts of the Czech National Bank (CNB). In other words, we use vintages of unrevised real-time data in order to facilitate comparison with the forecasts of the CNB, so that neither the model-based forecasts nor the CNB's forecasts have a significant information advantage stemming from different datasets.

The presented econometric analysis extends two recent studies by Arnoštová et al. (2010) and Rusnák (2013a). Arnoštová et al. (2010) explore several single-frequency models to forecast

¹ Recently developed time-series models employing mixed-frequency data also include factor-MIDAS (Marcellino and Schumacher, 2010) and mixed sampling frequency VAR models (Ghysels, 2012). For a recent overview of methods that deal with mixed-frequency data see Forni and Marcellino (2013).

quarterly GDP using monthly indicators.² Rusnák (2013a) deals with a dynamic factor model that, similarly to MIDAS and MF-VAR, combines data of different frequencies directly. The results from the two above-mentioned studies are discussed to complete our discussion of the performance of mixed-frequency data models.

In addition to point nowcasts and forecasts, density nowcasts are touched upon. For that purpose, a variant of MF-VAR is estimated by Bayesian techniques (MF-BVAR). This exercise allows, among other things, for a discussion of the uncertainty related to point nowcasts and its change with the arrival of new information.

The results based on the 2005–2012 evaluation period suggest that all of the models considered are able to beat a naïve benchmark (a random walk forecast). Over the nowcasting period a striking increase in the precision of the nowcasts in the third month of the nowcasted quarter coincides with the release of GDP data for the previous quarter. For nowcasting horizons, only the dynamic factor model is able to compete with the CNB nowcasts. Regarding forecasting, at longer horizons mixed-frequency VAR and the dynamic factor model deliver forecasts that are comparable to or better than the CNB forecasts. At shorter horizons, the CNB forecasts perform best.

Even though the examination of density forecasts is largely intended to illustrate the use of this tool for the Czech case, some results are worth emphasizing. It turns out that the size of the uncertainty decreases with the arrival of new information over the nowcasting period. Moreover, the estimates obtained later during the nowcasting period, which are surrounded by less uncertainty, are no worse than the less precise estimates at the beginning of the nowcasting period.

The rest of the paper is organized as follows. Section 2 presents the mixed-frequency data models used in the analysis and discusses their estimation. The dataset is introduced in Section 3. In Section 4 the results of the nowcasting and forecasting exercises are presented. Section 5 provides several notes on the uncertainty related to nowcasts based on the MF-BVAR model. Finally, Section 6 concludes. Some additional results related to robustness issues are included in appendices.

2. Models and Estimation

The motivation to examine all the currently used mixed-frequency data models – MIDAS, MF-VAR, and the DFM – stems from the fact that there is no theoretical preference a priori between the model approaches. As argued by Kuzin et al. (2011), MIDAS regression is a parsimoniously parameterized single-equation model but does not account for dynamic interrelations among the variables. On the other hand, while MF-VAR might be able to better capture the dynamics of the variables, it is more vulnerable to the curse of dimensionality, since one needs to specify a

² Arnoštová et al. (2010) consider a naïve MA(4) model of GDP, the model based on prediction of the expenditure components of GDP used in the CNB for near-term output forecasting, a simple bivariate VAR model of quarterly GDP and an aggregated monthly indicator, and a bridge equations model that starts with forecasting of monthly indicators, which are then combined with the GDP series in a VAR model for quarterly data. Apart from these four models, Arnoštová et al. (2010) also examine several factor models based on static principal components and dynamic factors.

dynamic model for all variables.³ The DFM also tries to exploit the dynamics of the variables, but attempts to turn the curse of dimensionality into a blessing by exploiting the comovements of the variables using a small number of common factors.

The three model classes are described in the following sub-sections. The rest of the models used for forecasting performance analysis are then discussed. Our set of models will be compared with a naïve (random walk) forecast and a CNB macroeconomic forecast.

We estimate the MIDAS and MF-VAR models using only GDP and one indicator variable at a time, while the dynamic factor model is estimated using all of the indicators jointly. We prefer this approach for the MIDAS and MF-VAR models since these models – unlike the DFM – are not equipped to deal with the curse of dimensionality that arises when one considers all of the indicators. Kuzin et al. (2011) follow a similar strategy.

2.1 Mixed-data Sampling (MIDAS)

The MIDAS approach was first applied in volatility forecasting (Ghysels et al., 2004), but since then a vast literature has accumulated documenting the gains from using higher frequency information in forecasting real activity in the U.S. and the euro area (see, for example, Clements and Galvão, 2008, Kuzin et al., 2011, and the survey by Andreou et al., 2011, for additional references). In addition, Clements and Galvão (2009) and Armesto et al. (2010) corroborate these findings using real-time vintages. See Ghysels et al. (2007) and Andreou et al. (2011) for comprehensive surveys on MIDAS.

We are interested in forecasting quarterly GDP growth $y_{t_q+h}^Q$ (h quarters ahead) using a monthly indicator for the i -th month in quarter t_q , X_{i,t_q}^M . In our baseline application we use an unrestricted MIDAS (U-MIDAS) specification:

$$y_{t_q+h}^Q = \mu + \delta y_{t_q}^Q + \sum_{j=0}^{p^Q} \sum_{i=0}^{N_M-1} \beta_{N_M-i+j*N_M} X_{N_M-i,t_q-j}^M + u_{t_q+h}, \quad (1)$$

where N_M denotes the number of months in a quarter. The advantage of the unrestricted specification is that it can easily be estimated by OLS. We use U-MIDAS as our baseline MIDAS model, but we also investigate the robustness of our results to different polynomial schemes for coefficients β in Appendix C. The results in Appendix C show that the forecasting performance of U-MIDAS is similar to that of other MIDAS specifications. This is in line with Foroni et al. (2014), who show in a Monte Carlo experiment that when the difference between frequencies is small (e.g. monthly vs. quarterly in our case) one might not need to employ more complex polynomial schemes such as Almon or beta lag polynomials, and that U-MIDAS generally performs well.

In our baseline estimations, we use the last six available observations of the monthly indicator (lags and leads depending on the forecast horizon). Since GDP growth tends to be rather persistent, we also include a lag of GDP growth to improve the forecasting accuracy. Note that

³ Regarding the relative forecasting performance of MIDAS and MF-VAR in output forecasting, Kuzin et al. (2011) show that in the case of nowcasting and forecasting of euro area GDP, MF-VAR performs better for longer horizons (5 to 9 months) while MIDAS outperforms MF-VAR at shorter horizons (1 to 4 months).

MIDAS is a single equation model which does not model the dynamics of the indicators on the right-hand side. Therefore, MIDAS can only provide direct forecasts, which results in a need to re-estimate the model for each forecasting horizon.

2.2 Mixed-frequency VAR (MF-VAR)

Mariano and Murasawa (2003, 2010) applied methods dealing with different sample frequencies to the quarterly time series of output and a monthly indicator within an MF-VAR framework. Recent contributions to this stream of literature can be divided according to whether the estimation of the system of equations is based on maximum likelihood (Kuzin et al., 2011) or Bayesian methods (Marcellino et al., 2012; Schorfheide and Song, 2011; Chiu et al., 2011).

MF-VARs are multivariate models able to account for endogenous variables of different sampling frequencies. The model is set up to produce forecasts of the highest sampling frequency of the time series entering the analysis. The following specification is formulated for the quarterly series of GDP and a monthly indicator (e.g. industrial production in a sector, a business climate index, etc.).

Following Mariano and Murasawa (2003) we assume that the observed quarterly level of GDP, $Y_{t_q}^Q$, relates to the unobserved monthly levels of GDP in the relevant quarter, $\tilde{Y}_{t_m}^M$, as their geometric mean:

$$\log Y_{t_q}^Q = \frac{1}{3} \left(\log \tilde{Y}_{t_m}^M + \log \tilde{Y}_{t_{m-1}}^M + \log \tilde{Y}_{t_{m-2}}^M \right), \quad (2)$$

where the time index t_m denotes months. Subtracting from equation (2) the same equation lagged by three months provides an equation in observed q-o-q growth rates, $y_{t_q}^Q$, and unobserved m-o-m growth rates, $\tilde{y}_{t_m}^M$:

$$y_{t_q}^Q = \frac{1}{3} \tilde{y}_{t_m}^M + \frac{2}{3} \tilde{y}_{t_{m-1}}^M + \tilde{y}_{t_{m-2}}^M + \frac{2}{3} \tilde{y}_{t_{m-3}}^M + \frac{1}{3} \tilde{y}_{t_{m-4}}^M. \quad (3)$$

Combining unobserved monthly observations of the GDP growth rate with a monthly indicator $X_{t_m}^M$ into the VAR model structure yields:

$$z_{t_m} = \sum_{j=1}^{p^M} \beta_j z_{t_m-j} + u_{t_m}, \quad (4)$$

where $z_{t_m} = \begin{pmatrix} \tilde{y}_{t_m}^M - \tilde{\mu}_y^M \\ X_{t_m}^M - \mu_X \end{pmatrix}$ and $u_{t_m} \sim N(0, \Sigma)$.

Equation (3) relates observed and unobserved variables and together with equation (4) can easily be rewritten into a linear state space form (for $p^M \leq 5$):

$$\begin{aligned} s_{t_m+1} &= As_{t_m} + Bv_{t_m} \\ \begin{pmatrix} \tilde{y}_{t_m}^Q - \mu_y^Q \\ X_{t_m}^M - \mu_X \end{pmatrix} &= Cs_{t_m} \end{aligned} \quad s_{t_m} = \begin{pmatrix} z_{t_m} \\ \vdots \\ z_{t_m-4} \end{pmatrix}, \quad (5)$$

where $v_{t_m} \sim N(0, I_2)$. The specification of matrices A , B , and C together with equation (5) for $p^M > 5$ can be found in Mariano and Murasawa (2010).

System (5) is estimated by the EM algorithm and is then used to forecast output by the Kalman smoother procedure. As is usual in this context the observed data are demeaned prior to the estimation to reduce the size of the parameter set. The mean is then added to the forecasted values. The one-step-ahead forecasts are then iterated to obtain forecasts for longer horizons. The number of lags, p^M , is determined using the Bayesian Information Criterion for each estimated model separately. The maximum lag considered is six months.

The bivariate system (5) is estimated for all monthly indicators, and the individual forecasts are then combined into a simple mean. As a robustness check, the weighting scheme based on the previous forecasting performance of a particular bivariate VAR is employed. More specifically, the weights are computed as the inverse of the mean squared errors over the previous four quarters.⁴ The weights of the bivariate models are then normalized to unity and used to calculate the resulting forecast. The results are largely unaffected by the choice of alternative weighting scheme and are presented in Appendix A.

2.3 Mixed-frequency Bayesian VAR (MF-BVAR)

The MF-VAR model is estimated by the EM algorithm, which allows us to deal with missing values of GDP growth. Another possible approach to the estimation of MF-VAR draws on Bayesian techniques. More precisely, we employ the Gibbs sampler as in Chiu et al. (2012). The sampler draws subsequently from the conditional posteriors of the model parameters and from the assumed distribution of the missing values. For each draw of model parameters and missing values a forecast is computed. The median of the simulated distribution of the forecasts for each forecasting horizon is then taken.

Note that the point forecasts produced by MF-VAR estimated by Bayesian techniques (MF-BVAR) can provide results different from the MF-VAR model, as the Bayesian approach allows one to incorporate additional information in the form of priors on top of the information provided by the data.

We follow Chiu et al. (2012) and define:

$$w_{t_m} = \begin{pmatrix} \tilde{y}_{t_m}^Q \\ X_{t_m}^M \end{pmatrix}, \quad (6)$$

⁴ Since nowcasts are computed for several points in a quarter only, the MSE is computed at the same point in the previous four quarters.

where again $\tilde{y}_{t_m}^Q$ is quarterly growth of GDP with missing values for the second and third month of the quarter, and $X_{t_m}^M$ denotes a fully observable monthly indicator. The model is formulated as a VAR-type model:

$$w_{t_m} = A + \sum_{j=1}^{p^M} B_j w_{t_m-j} + u_{t_m}, \quad (7)$$

where $u_{t_m} \sim N(0, \Sigma)$. The Gibbs sampler is described in Appendix A of Chiu et al. (2012). As an alternative, the Gibbs sampler discussed in Schorfheide and Song (2013) can be used. These two samplers differ in the way the missing values are treated.

Regarding the prior assumed for the model parameters, we employ the independent normal inverse-Wishart prior. Since the data are transformed to be stationary prior to estimation, the prior mean for the AR parameters is set to zero. The prior variance of the AR parameters is set in line with the Minnesota-style prior with the standard hyperparameter values as in Canova (2007). The inverse-Wishart distribution for the prior on the covariance matrix of the error term is assumed to have an identity matrix as a scale matrix and three degrees of freedom.

Note that in contrast to the MF-VAR model, the series entering the analysis are not demeaned, as the uncertainty of the intercept is of interest as well as the uncertainty related to the other model parameters. To simulate the posterior distributions, 6,000 draws from the Gibbs sampler are generated. The first 5,000 draws are discarded to minimize the effect of the initial values of the sampler, and the last 1,000 draws are used for inference. In model (7), we assume six lags ($p^M = 6$).

Similarly to MF-VAR and MIDAS, the bivariate models based on a particular monthly indicator (7) are combined such that the median nowcast of a particular model enters the combination procedure. The simple mean of the medians is presented. The weighted mean – using the inverses of the MSE over the last four quarters as weights – is presented in Appendix A.

2.4 Dynamic Factor Model (DFM)

One of the most heavily used mixed-frequency data models is the dynamic factor model (Giannone et al., 2008; Camacho and Perez-Quiros, 2010; Banbura and Modugno, 2014). Therefore, we also compare the MIDAS and MF-VAR models with the DFM. Similarly to MF-VAR, the DFM is a multivariate approach that uses monthly indicators to predict quarterly GDP. The model is cast into state space representation and is estimated by the EM algorithm. By using the Kalman filter and smoother, the model is able to handle missing observations and unbalanced datasets as well as mixed frequencies.

The dynamic factor model is specified as follows:

$$x_t = \Lambda f_t + \varepsilon_t, \quad (8)$$

$$f_t = A f_{t-1} + u_t, \quad (9)$$

where x_t is a vector of monthly indicators and quarterly GDP, Λ is a matrix of factor loadings, f_t stands for an unobserved common factor, while A captures the dynamics of the factor. Shocks ε_t and u_t are assumed to be mutually uncorrelated. We use one factor to capture the comovements across variables and two lags to describe the autoregressive dynamics of the factor. Further details about the model and the specification we use can be found in Rusnák (2013a), who also evaluates the performance of the DFM for forecasting Czech GDP under various specifications. Further, technical details of the estimation using the EM algorithm can be found in Banbura and Modugno (2014).

Note that the difference between the DFM and MIDAS and MFVAR lies in how the models aggregate the information coming from the different indicators. While the DFM weights the different indicators endogenously within the estimation procedure, the individual MFVAR and MIDAS forecasts are weighted out of the model using a specific weighting scheme (simple and MSE-weighted means).

2.5 The CNB's Macroeconomic Forecasts

We compare the forecasts from the three models with the CNB's macroeconomic forecasts. Currently, GDP forecasting up to one quarter ahead (referred to as near-term forecasting at the CNB) is based on a set of linear regressions, which capture the dynamics of single expenditure components. Additional information stemming from monthly indicators is incorporated in the form of expert judgment. Subsequently, the predicted expenditure components are aggregated, and further expert judgment is applied in order to obtain a sufficiently smooth trajectory of overall GDP.

For forecasting horizons longer than one quarter ahead, the CNB's GDP forecast is based on the structural core model of the CNB. A small open-economy gap model – QPM (Coats et al., 2003) – was used until 2008, and a standard DSGE model – g3 (Andrle et al., 2009) – has been applied since then. Again, expert judgments are often incorporated into the forecast during the forecasting process (Brůha et al., 2013).

3. Data

There is a range of variables of monthly frequency that might provide information useful for the forecasting of GDP. Our approach in selecting the indicators is to focus on the so-called headline macro aggregates and not to consider disaggregated information (due to the unavailability of real-time data and the possible over-representation of one variable or sector in the dataset). Our dataset thus comprises real GDP growth and 27 indicators covering hard data and financial, survey, and foreign variables.

Hard data indicators are included because of their natural connection with the production side (e.g. industrial production, construction) and the expenditure side (e.g. sales, unemployment rate) of the economy. Financial variables are considered since there is some evidence of the importance of these variables for Czech GDP (Havranek et al., 2012). Furthermore, survey variables have been shown to be crucial for precise and timely nowcasting in the U.S. and some other countries (Giannone et al., 2008). Finally, the rationale for including data capturing foreign developments is

straightforward: the Czech economy is a small open economy and is therefore strongly affected by foreign variables.

In our forecasting performance exercise we will attempt to match the dataset to the information set that is available to forecasters when they are preparing their regular forecasts. This amounts to using vintages of unrevised macroeconomic data and taking into account publication lags of macroeconomic variables (for example, GDP is released with a considerable lag, approximately 70 days after the end of the reference quarter).

Using unrevised data might be important since there is evidence that revisions to Czech GDP are of considerable magnitude (Rusnák, 2013b). The use of revised data for the out-of-sample exercise may overestimate the predictive power of the indicators and understate the forecasting errors that would have been made when forecasting using only the information available in real time. If the revisions are weakly correlated one might expect them to tend to average out when using real-time data (Giannone et al., 2008), but this is ultimately an empirical matter that we are not able to rule out beforehand. We provide the results using only the last available vintage in Appendix B.

Table 1 summarizes our dataset. We use ten series that are subject to frequent revisions, so for those series we use historical vintages obtained from the OECD real-time database. A further look at Table 1 reveals considerable variation in the publication delays for the variables. For the purposes of our forecasting exercise we map these publication delays into unbalancedness patterns observed in the middle of the month and at the end of the month. Besides the OECD real-time database, the data sources are the Czech Ministry of Labor and Social Affairs (MLSA), the Czech National Bank ARAD database (CNB), the Prague Stock Exchange (PSE), the Czech Statistical Office (CZSO), the Ifo Institute for Economic Research (IFO), and Eurostat.

Table 1: List of Variables Used in Forecasting Exercises

	Variable	Rev.	Pub. lag	Unb. Pat	Source
1	Real GDP	Y	68 to 71	4,5,3-4,5,3	OECD
2	Industrial production index	Y	37 to 45	2-2	OECD
3	Construction output	Y	37 to 45	2-2	OECD
4	Retail sales	Y	35 to 49	2-2	OECD
5	Unemployment rate	N	8 to 11	1-1	MLSA
6	CPI total	N	8 to 11	1-1	CZSO
7	Exports (current prices)	Y	35 to 39	2-2	OECD
8	Imports (current prices)	Y	35 to 39	2-2	OECD
9	Export price index	N	43 to 47	3-2	CZSO
10	Import price index	N	43 to 47	3-2	CZSO
11	CZK/EUR exchange rate	N	0	1-0	CNB
12	M2	Y	30 to 31	2-1	CNB
13	Credit	Y	30 to 31	2-1	CNB
14	3M PRIBOR	N	0	1-0	CNB
15	1Y PRIBOR	N	0	1-0	CNB
16	PX-50 stock index	N	0	1-0	PSE
17	Czech government bond yield (10Y)	N	0	1-0	CNB
18	Consumer confidence indicator	N	-7 to -2	1-0	CZSO
19	Industry confidence indicator	N	-7 to -2	1-0	OECD
20	Construction confidence indicator	N	-7 to -2	1-0	OECD
21	Trade confidence indicator	N	-7 to -2	1-0	OECD
22	Services confidence indicator	N	-7 to -2	1-0	OECD
23	3M EURIBOR	N	0	1-0	CNB
24	1Y EURIBOR	N	0	1-0	CNB
25	Oil price (Brent)	N	0	1-0	Datastream
26	Ifo Business Climate for Germany	N	-10 to -4	1-0	IFO
27	Euro area Business Climate Indicator	N	-4 to -1	1-0	Eurostat
28	German exports	Y	40	2.2	OECD

Notes: Rev. indicates whether the data used are revised or not. Pub. Lag indicates the typical publication delay of the variable in days (average during 2005–2012 period). Unb. Pat. stands for Unbalancedness Pattern and indicates the number of missing observations in the middle of the month and at the end of the month, respectively. All indicators except for GDP are at monthly frequency. All of the variables are in logarithms and differenced, except for the industry, construction, trade, and services confidence indicators, which are differenced only.

We use a real-time database of 99 monthly vintages: the first vintage is from October 2004 and the last from December 2012. Most of the variables start from 2000M1. Note that the monthly data on the Czech government bond yield (10Y) and the services confidence indicator exhibit a few missing values at the beginning of 2000. Since MIDAS and MF-VAR assume fully observable monthly indicators, the two indicators are excluded from the estimation and forecasting for the two model classes.

We do not preselect the variables from our dataset any further. Models using variables selected based on some in-sample criteria might be subject to structural breaks and their out-of-sample

performance might not be satisfactory. On the other hand, choosing variables based on some out-of-sample training sample might not be a good strategy for the Czech Republic, since variables preselected using the pre-crisis period might lose their predictive power in the crisis period. Therefore, we use all of the variables in our dataset to produce the forecasts. The DFM should be able to arrive at proper weights for the indicators provided that the variables are not over-represented in the dataset to confuse idiosyncratic shocks with the estimated factors. For the MIDAS and MFVAR models we combine the forecasts from the individual bivariate models using simple averages or weights based on past forecast errors.

4. Results

The assessment of the out-of-sample forecasting precision is based on the root-mean-square error (RMSE), which is computed over the evaluation period. The evaluation sample covers the period 2005Q1–2012Q3. We use two measures of the observed GDP growth rate: the first release of GDP growth, and the growth rate as reported in our last available vintage, i.e., the December 2012 vintage. While the first releases might be closer to the forecasters' loss function and might be important from the communication point of view (e.g. the CNB's comments on the first data releases), the last available vintage growth rates are arguably closer to the true values, as they are based on all the available information and the latest methodology.

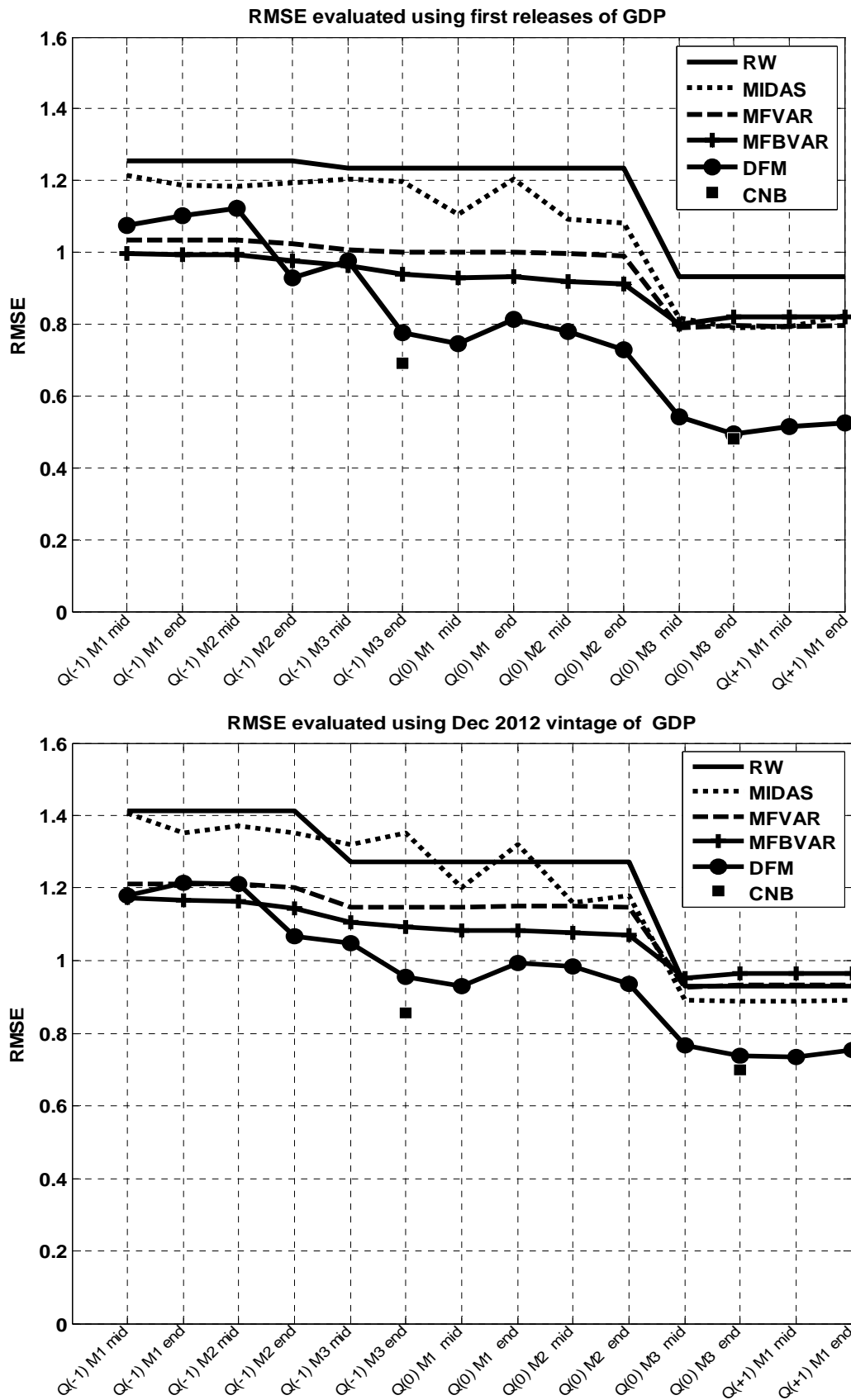
In what follows, we denote nowcasts as forecasts for a given quarter which are conducted during the previous quarter, during the given quarter, and in the first month of the next quarter. More precisely, the nowcasting period refers to all the middles and ends of the months of the previous quarter: $Q(-1) M1 mid$, $Q(-1) M1 end$, ..., $Q(-1) M3 end$, to the same periods in the current quarter $Q(0) M1 mid$, $Q(0) M1 end$, ..., $Q(0) M3 end$, and to the middle and end of the first month of the quarter following the quarter the nowcast is done for: $Q(1) M1 mid$ and $Q(1) M1 end$. Forecasts are considered for the current quarter (nowcasts) and up to six quarters ahead.

4.1 Nowcasting

Nowcasts of GDP are used as inputs into the core CNB forecasting model, so models that are able to provide precise nowcasts are of great relevance for the CNB. Figure 1 presents the results of our mixed-frequency data models and compares the predictive accuracy with the CNB nowcasts.

The results show that the performance of the DFM is superior to all other mixed-frequency model forecasts. Moreover, the nowcasting accuracy of the DFM is comparable to the nowcasts historically produced by the CNB. MF-VAR and MF-BVAR outperform the DFM for forecasts carried out at the beginning of the previous quarter for a horizon of a quarter.

Figure 1: Root Mean Square Errors at Different Nowcast Origins



On the whole, all of the models tend to be more precise with the arrival of new information, as documented by the decreasing root mean square error. The decrease is not monotonous though, and the biggest decrease seems to come in the middle of the third month of the nowcasted quarter. This is most likely due to the release of the GDP data for the previous quarter and probably reflects additional information about GDP that is not present in the monthly indicators.

The results are qualitatively similar when the forecasts are evaluated using the first releases of GDP or using the latest available vintage from December 2012. Naturally, the RMSE evaluated using the latest vintage is larger because it also reflects the presence of future revisions that are not known at the time when the forecast is made. Note that it is generally hard to predict revisions to Czech GDP out of sample (Rusnak, 2013b).

For GDP nowcasts for the euro area, Foroni and Marcellino (2014) find that the MIDAS model outperforms MF-VAR if the nowcasting period ($Q(0)$ in our notation) is considered. For Czech GDP nowcasting the opposite result is found.

4.2 Forecasting

The models we consider are geared predominantly to short-term forecasting, due to their ability to work with mixed frequencies and ragged ends. Mixed-frequency models, however, might also perform well for longer-term forecasts due to their ability to provide a precise starting point. Sims (2002) provides anecdotal evidence suggesting that much of the advantage of judgmental forecasts over model-based forecasts comes from their ability to obtain more precise forecasts of the current quarter.

In this section, we therefore look at the suitability of our models for medium-term forecasting. Tables 2 and 3 present the RMSEs for forecasting horizons up to six quarters ahead. The forecast origin for these forecasts is chosen to be the end of the third month of the current quarter ($Q(0)M3\text{ end}$), since this largely corresponds to the information set available to the CNB when producing its macroeconomic forecast.

Table 2: Root Mean Square Forecast Errors (Evaluated Using First Releases)

	Nowcast	1Q-ahead	2Q-ahead	3Q-ahead	4Q-ahead	5Q-ahead	6Q-ahead
RW	0.93	1.25	1.29	1.38	1.52	1.55	1.52
DFM	0.49	0.79	1.10	1.18	1.18	1.17	1.20
MIDAS	0.79	1.14	1.27	1.28	1.29	1.34	1.37
MF-VAR	0.80	1.01	1.06	1.13	1.20	1.18	1.19
MF-BVAR	0.82	0.95	1.03	1.10	1.15	1.14	1.15
CNB	0.48	0.70	0.97	1.06	1.16	1.21	1.28

Note: Bold indicates the lowest value of the RMSE for a particular horizon.

Table 3: Root Mean Square Forecast Errors (Evaluated Using Dec 2012 Vintage)

	Nowcast	1Q-ahead	2Q-ahead	3Q-ahead	4Q-ahead	5Q-ahead	6Q-ahead
RW	0.93	1.28	1.44	1.53	1.67	1.70	1.67
DFM	0.74	0.96	1.20	1.31	1.34	1.33	1.34
MIDAS	0.89	1.22	1.44	1.45	1.49	1.54	1.54
MF-VAR	0.93	1.15	1.22	1.28	1.35	1.37	1.35
MF-BVAR	0.96	1.10	1.18	1.25	1.30	1.30	1.30
CNB	0.70	0.86	1.07	1.19	1.32	1.38	1.44

Note: Bold indicates the lowest value of the RMSE for a particular horizon.

Looking at Table 2, there are several observations worth noting. First, all the models perform better than the naïve random walk forecast. Second, the DFM comes out as the best among the mixed-frequency model-based forecasts for the nowcast and the 1Q-ahead horizon. The DFM is competitive with the CNB for nowcasts (the difference in the RMSE being less than 0.1). Third, MF-BVAR performs best for horizons beyond 1Q ahead. MF-BVAR is competitive with the CNB at 2Q–3Q and performs best for horizons beyond the third quarter. Table 3 shows qualitatively similar results when the December 2012 vintage is used for evaluating the forecasts.

According to Arnoštová et al. (2010), the CNB framework performed much better than the DFM in terms of forecasting accuracy. However, this might stem from a lack of information contained in the time span examined, which ended in 2009. Our results suggest that extending the time span to 2012, i.e., including the information carried by the recent financial and economic crisis, improves the performance of the DFM substantially.

The relative performance of the two variants of MF-VAR and MIDAS is comparable for nowcasts and worse in the case of MIDAS if a longer forecasting horizon is considered. This is similar to the findings for nowcasting GDP in the euro area in Kuzin et al. (2011), who find that MIDAS forecasts better for nowcasting (up to 4–5 quarters) and MF-VAR outperforms MIDAS for longer horizons.

5. Density Nowcasts from MF-BVAR

Bayesian estimation of MF-VAR offers a straightforward way of constructing density nowcasts/forecasts. We restrict our attention to density nowcasts.

The motivation for extending our analysis to density nowcasting is twofold. First, we want to illustrate how density nowcasts of output are constructed in the context of Czech real-time vintage data. As suggested by some practitioners, density nowcasts allow uncertainty to be introduced into core forecasting models (usually DSGE-type models), which use nowcasts as initial conditions (e.g. Bache et al., 2010). Density nowcasting then represents the first step in developing such a procedure, the second step being soft conditioning of the forecasts on the nowcast densities. The second motivation is to examine how the uncertainty and precision of GDP nowcasts change with the release of new data during the forecasting period.

We start by evaluating density nowcasts. The measure we apply is based on the Kullback-Leibler Information Criterion (KLIC) – see Mitchell and Hall (2005). The KLIC for a model i is defined as follows:

$$KLIC_i = \int f_t(y_t) \ln \frac{f_t(y_t)}{f_{t,i}(y_t)} dy_t = E[\ln f_t(y_t) - \ln f_{t,i}(y_t)], \quad (10)$$

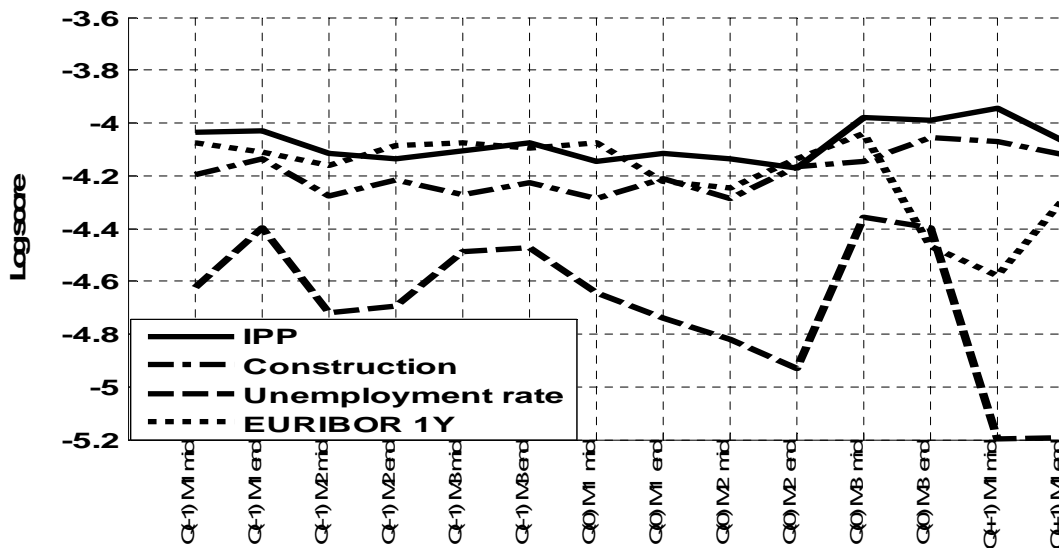
where $f_t(y_t)$ is the true density of a random variable and $f_{t,i}(y_t)$ is the density based on model i .

To compare the performance of density nowcasts from two models ($i=1,2$), it is enough to compare the expected logarithmic score (as the logarithmic score of the true density in the KLIC in formula (10) is the same for both models):

$$E \ln S_i = E[\ln f_{t,i}(y_t)]. \quad (11)$$

The model with the higher expected logarithmic score gives on average a higher probability to events that have occurred ex post. The expected logarithmic score can be estimated by the average of $\ln f_{t,i}(y_t)$ over the evaluation sample. The resulting number is called the log score.

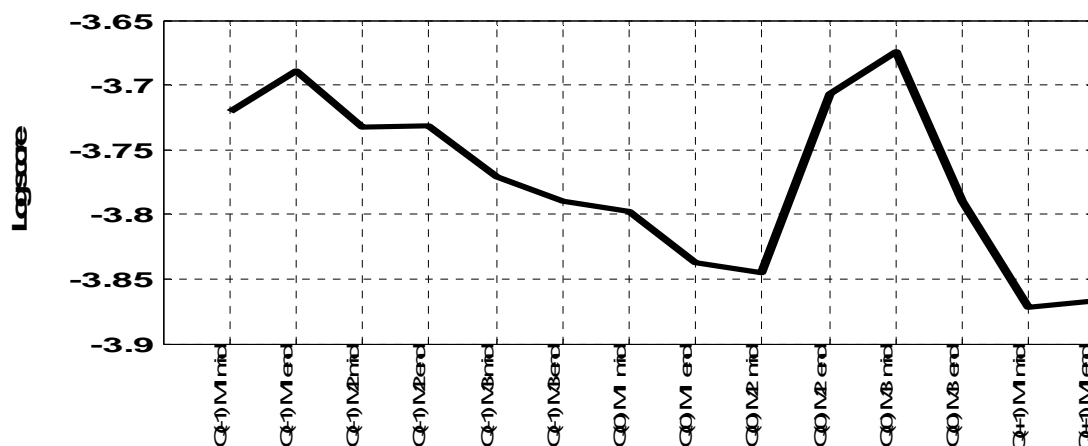
Figure 2: Log Score for Selected Indicators Over the Nowcasting Horizon



As an example, Figure 2 presents log scores for selected monthly indicators. The figure suggests which monthly indicators (bivariate VARs) provide more accurate density nowcasts. It turns out, for example, that industrial production is a more useful monthly indicator than the unemployment rate for all the nowcasting periods considered. Furthermore, Figure 2 suggests how the accuracy of the density nowcasts changes with the arrival of new data during the nowcasting period. Surprisingly, for some indicators the log score decreases at the end of the nowcasting period, when the most accurate information consistent with the ex-post observed GDP growth should be available.

Figure 3 shows the log score for the combined density nowcasts. The individual density nowcasts from bivariate MF-BVARs are combined linearly with equal weights. As a robustness check, linear combination with recursive log score weights is used (see Kascha and Ravazzolo, 2010, for a discussion of various weighting schemes for density combination). The results, however, are largely unaffected.

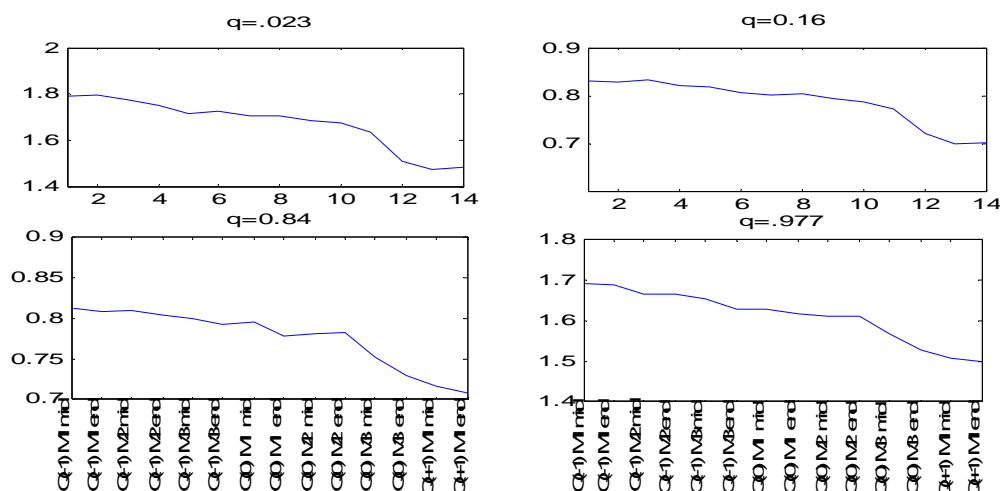
Figure 3: Log Score for the Combined Density Nowcast



The log score for the combined nowcast densities is higher than the individual log scores presented in Figure 2. The magnitude of the change over the nowcasting period, however, is not large, i.e., the accuracy of the density nowcasts does not change much with the arrival of new information. So, the new information arriving seems to add as much new relevant information as noise.

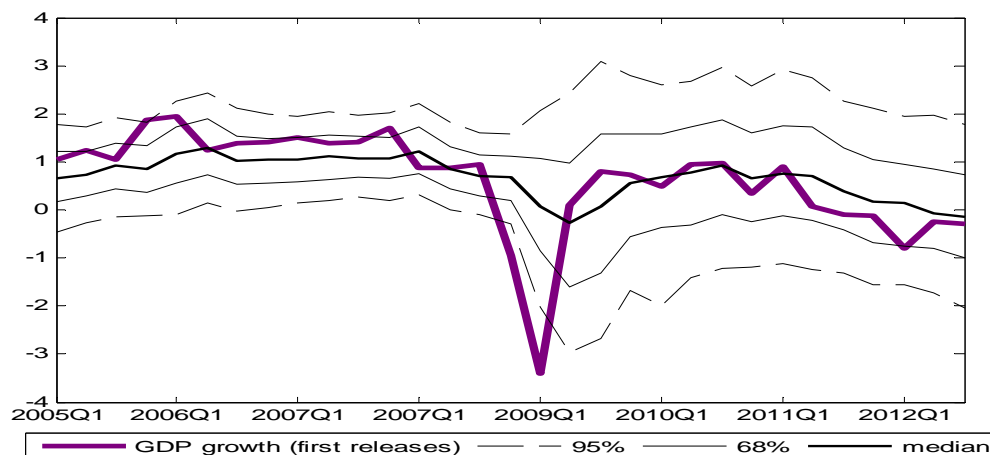
Next, Figure 4 shows how the uncertainty related to the nowcasts decreases over the nowcasting period. The figure presents the distance of a particular quantile of the posterior distribution of the combined nowcast to the median of the distribution. The number for a particular nowcasting period represents the average over all quarters considered for nowcasting. The falling profiles for all the quantiles considered suggest decreasing uncertainty as a consequence of the arrival of new information during the nowcasting period.

Figure 4: Average Distance to the Median of the Combined Density Nowcast for Selected Quantiles



Finally, Figure 5 reports selected quantiles of the density nowcasts computed at the end of the relevant quarter ($Q(0) M3$) and the observed GDP growth. As above, the density nowcasts are produced by combining the density nowcasts from bivariate VARs and simply averaged. The combination based on log scores provides almost identical results.

Figure 5: Nowcasts and Observed GDP Growth, 2005Q1–2012Q3



Two points are worth emphasizing. First, the uncertainty related to the nowcasts increased significantly during and after the 2008 crisis, which hit the Czech Republic in 2009. Second, the fall in GDP in 2009 is not captured by the 95% credible set of nowcasts even though foreign monthly indicators are included. This only reflects the severity of the negative shock to GDP during the 2009 recession.

6. Concluding Remarks

In this paper we employ three classes of mixed-frequency data models to examine the forecasting of Czech GDP in real time. Specifically, we use two variants of mixed-frequency vector autoregression estimated by the EM algorithm and the Kalman smoother (MF-VAR) and by Bayesian techniques (MF-BVAR), the mixed-data sampling model (MIDAS), and the dynamic factor model (DFM) and evaluate their precision against the CNB's macroeconomic forecasts.

The results suggest that for nowcasting and short-term forecasting the performance of the dynamic factor model is comparable to the macroeconomic forecasts published by the CNB. At longer horizons, MF-VARs compete successfully with the CNB's forecasts. Moreover, the Bayesian approach to the estimation of the MF-VAR model adds to the precision of the GDP forecasts. To summarize, mixed-frequency data models are an important complementary tool to the currently used forecasting approaches, which often draw heavily on expert judgment. As mixed-frequency models take into account a much broader set of time series than single-frequency models they can provide a similar level of forecasting quality as judgmental forecasts.

The models presented here might be useful for nowcasting and forecasting other variables as well, especially ones that have long publication delays. Future improvements to the models might lie in combining the forecasts from various models or combining forecast densities similarly to Aastveit et al. (2011). Alternatively, capturing possible nonlinear relationships between the indicators (e.g.

financial variables) and GDP might improve the predictions. Finally, note that the models that employ the Kalman filter (MF-VAR and DFM) can also be used to produce conditional forecasts in a relatively straightforward manner (Banbura et al., 2014).

References

- AASTVEIT, K. A., K. R. GERDRUP, A. S. JORE, AND L. A. THORSRUD (2011): “Nowcasting GDP in Real-Time: A Density Combination Approach.” Norges Bank Working Paper 11/2011.
- ANDREOU, E., E. GHYSELS, AND A. KOURTELLOS (2011): “Forecasting with Mixed-Frequency Data.” *Handbook on Economic Forecasting*, edited by Michael P. Clements and David Hendry, Chapter 8.
- ANDRLE, M., T. HLÉDIK, O. KAMENÍK, AND K. VLČEK (2009): “Implementing the New Structural Model of the Czech National Bank.” Czech National Bank Working Paper 2/2009.
- ARMESTO, M., K. ENGEMANN, AND M. OWYANG (2010): “Forecasting with Mixed Frequencies.” *The Federal Reserve Bank of St. Louis Review* 92(6), pp. 521–536.
- ARNOŠTOVÁ, K., D. HAVRLANT, L. RŮŽIČKA, AND P. TÓTH (2010): “Short-Term Forecasting of Czech Quarterly GDP Using Monthly Indicators.” Czech National Bank Working Paper 12/2010.
- BACHE, I. W., L. BRUBAKK, A. S. JORE, J. MAIH, AND J. NICOLAISEN (2010): “Monetary Policy Analysis in Practice – A Conditional Forecasting Approach.” *Staff Memo* No. 8/2010, Norges Bank.
- BANBURA, M. AND M. MODUGNO (2014): “Maximum Likelihood Estimation of Factor Models on Datasets with Arbitrary Pattern of Missing Data.” *Journal of Applied Econometrics* 29(1), pp. 133–160.
- BANBURA, M., D. GIANNONE, AND M. LENZA (2014): “Conditional Forecasts and Scenario Analysis with Vector Autoregressive Models for Large Cross-Sections, EABCN Judgement and Combination in Forecasting and Policy Models.” London, March 2014.
- BRŮHA, J., T. HLÉDIK, T. HOLUB, J. POLANSKÝ, AND J. TONNER (2013): “Incorporating Judgments and Dealing with Data Uncertainty in Forecasting at the Czech National Bank.” Czech National Bank Research and Policy Note 2/2013.
- CAMACHO, M. AND G. PEREZ-QUIROS (2010): “Introducing the Euro-Sting: Short-Term Indicator of Euro Area Growth.” *Journal of Applied Econometrics* 25(4), pp. 663–694.
- CANOVA, F. (2007): “Methods for Applied Macroeconomic Research.” Princeton University Press.
- CHIU, C. W., B. ERAKER, A. T. FOERSTER, T. B. KIM, AND H. D. SEOANE (2012): “Estimating VAR’s Sampled at Mixed or Irregular Spaced Frequencies: A Bayesian Approach.” The Federal Reserve Bank of Kansas City Research Working Paper 11-11.

- CLEMENTS, M. P. AND A. B. GALVÃO (2008): “Macroeconomic Forecasting with Mixed-Frequency Data: Forecasting Output Growth in the United States.” *Journal of Business & Economic Statistics* 26(4), pp. 546–554.
- CLEMENTS, M. P. AND A. B. GALVÃO (2009): “Forecasting US Output Growth Using Leading Indicators: An Appraisal Using MIDAS Models.” *Journal of Applied Econometrics* 24, pp. 1187–1206.
- COATS, W., D. LAXTON, AND D. ROSE (2003): “The Czech National Bank’s Forecasting and Policy Analysis System.” Czech National Bank.
- FORONI, C. AND M. MARCELLINO (2013): “A Survey of Econometrics Methods for Mixed-Frequency Data.” Norges Bank Working Paper 2013/06.
- FORONI, C. AND M. MARCELLINO (2014): “A Comparison of Mixed Frequency Approaches for Nowcasting Euro Area Macroeconomic Aggregates.” *International Journal of Forecasting* 30, pp. 554–568.
- FORONI, C., C. SCHUMACHER, AND M. MARCELLINO (2014): “Unrestricted Mixed Data Sampling (MIDAS): MIDAS Regressions with Unrestricted Lag Polynomials.” *Journal of the Royal Statistical Society: Series A (Statistics in Society)*, forthcoming.
- GHYSELS, E., P. SANTA-CLARA, AND R. VALKANOV (2004): “The MIDAS Touch: Mixed Data Sampling Regressions.” CIRANO Working Paper 2004s-20.
- GHYSELS, E., P. SANTA-CLARA, AND R. VALKANOV (2005): “There is a Risk-Return Trade-off After All.” *Journal of Financial Econometrics* 76(3), pp. 509–548.
- GHYSELS, E., A. SINKO, AND R. VALKANOV (2007): “MIDAS Regressions: Further Results and New Directions.” *Econometric Reviews* 26(1), pp. 53–90.
- GHYSELS, E. (2012): “Macroeconomics and the Reality of Mixed Frequency Data.” Mimeo.
- HAVRANEK, T., R. HORVATH, AND J. MATEJU (2012): “Monetary Transmission and the Financial Sector in the Czech Republic.” *Economic Change and Restructuring* 45, pp. 135–155.
- KASCHA, C. AND F. RAVAZZOLO (2010): “Combining Inflation Density Forecasts.” *Journal of Forecasting* 29(1–2), pp. 231–250.
- KUZIN, V., M. MARCELLINO, AND C. SCHUMACHER (2011): “MIDAS vs. Mixed-Frequency VAR: Nowcasting GDP in the Euro Area.” *International Journal of Forecasting* 27, pp. 529–542.
- MARCELLINO, M., M. PORQUEDDU, AND F. VENDETTI (2012): “Short-term GDP Forecasting with a Mixed Frequency Dynamic Factor Model with Stochastic Volatility.” 7th ECB Workshop.

- MARCELLINO, M. AND C. SCHUMACHER (2010): “Factor-MIDAS for Now-and Forecasting with Ragged-Edge Data: A Model Comparison for German GDP.” *Oxford Bulletin of Economics and Statistics* 72, pp. 518–550.
- MARIANO, R. S. AND Y. MURASAWA (2003): “A New Coincident Index of Business Cycles Based on Monthly and Quarterly Series.” *Journal of Applied Econometrics* 18, pp. 427–443.
- MARIANO, R. S. AND Y. MURASAWA (2010): “A Coincident Index, Common Factors, and Monthly Real GDP.” *Oxford Bulletin of Economics and Statistics* 72(1), pp. 27–46.
- MITCHELL, J. AND S. G. HALL (2005): “Evaluating, Comparing, and Combining Density Forecasts Using the KLIC with an Application to the Bank of England and NIESR “Fan” Charts of Inflation.” *Oxford Bulletin of Economics and Statistics* 67, pp. 995–1033.
- RUSNÁK, M. (2013a): “Nowcasting Czech GDP in Real Time.” Czech National Bank Working Paper 6/2013.
- RUSNÁK, M. (2013b): “Revisions to the Czech National Accounts: Properties and Predictability.” *Czech Journal of Economics and Finance (Finance a uver)* 63(3), pp. 244–261.
- SCHORFHEIDE, F. AND D. SONG (2013): “Real-Time Forecasting with a Mixed Frequency VAR.” EEA Conference, Chicago, January 2012.
- SIMS, C.A. (2002): “The Role of Models and Probabilities in the Monetary Policy Process.” *Brookings Papers on Economic Activity* 33(2), pp. 1–62.

APPENDIX A: Combination of Individual Bivariate MF-VARs/MF-BVARs based on MSE

As a benchmark, the simple mean over the nowcasts/forecasts from the bivariate MF-VARs is considered. However, the performance of the models might be improved if the weights depend on the previous forecasting error of a particular model. In this section, we compare the results for the two weighting schemes. Note that the mean squared errors used to compute the weights for quarter t_q are taken for quarters t_{q-2}, \dots, t_{q-5} to account for the GDP publication lag.

The results using MSE weighting suggest that the improvements in the various weighting schemes are generally modest. Moreover, the performance varies for different horizons and different models. Selecting the top five models generally works best for MF-BVAR, while for MIDAS and MFVAR there are no clearly preferred weighting schemes.

Table A1: Nowcasting – Different Weighting Schemes (Evaluated Using First Releases)

	Q(-1) M1 mid	Q(-1) M1 end	Q(-1) M2 mid	Q(-1) M2 end	Q(-1) M3 mid	Q(-1) M3 end	Q(0) M1 mid	Q(0) M1 end	Q(0) M2 mid	Q(0) M2 end	Q(0) M3 mid	Q(0) M3 end	Q(+1) M1 mid	Q(+1) M1 end
MFVAR														
Simple Mean	1.03	1.03	1.04	1.02	1.01	1.00	1.00	1.00	1.00	0.99	0.79	0.80	0.79	0.80
Inverse MSE	1.00	1.00	1.01	0.98	1.00	0.98	0.98	0.99	0.99	0.98	0.77	0.78	0.78	0.78
Best model	1.11	1.15	1.03	1.07	1.04	1.12	1.10	1.04	0.99	1.12	0.85	0.84	0.83	0.65
Top 5 models	1.02	1.01	1.01	0.97	1.00	0.99	1.00	0.99	0.99	0.98	0.70	0.72	0.72	0.73
MF-BVAR														
Simple Mean	1.00	0.99	0.99	0.98	0.96	0.94	0.93	0.93	0.92	0.91	0.80	0.82	0.82	0.82
Inverse MSE	0.98	0.99	0.99	0.95	0.94	0.91	0.92	0.90	0.91	0.91	0.79	0.80	0.80	0.81
Best model	1.01	1.04	1.02	0.98	0.95	0.95	0.96	0.98	0.99	0.96	0.80	0.79	0.85	0.90
Top 5 models	0.98	0.96	1.00	0.98	0.93	0.91	0.92	0.91	0.93	0.95	0.75	0.75	0.79	0.80
MIDAS														
Simple Mean	1.22	1.19	1.18	1.19	1.20	1.20	1.11	1.20	1.09	1.08	0.82	0.79	0.79	0.82
Inverse MSE	1.19	1.19	1.14	1.32	1.06	1.07	1.03	1.06	1.03	1.03	0.78	0.78	0.78	0.78
Best model	1.25	1.15	1.10	1.40	1.18	1.07	1.14	1.19	1.32	1.04	0.59	0.87	0.90	1.27
Top 5 models	1.26	1.22	1.11	1.24	1.23	1.11	1.13	1.22	1.11	1.09	0.76	0.75	0.73	0.81

Table A2: Nowcasting – Different Weighting Schemes (Evaluated Using Dec 2012 Vintage)

	Q(-1) M1 mid	Q(-1) M1 end	Q(-1) M2 mid	Q(-1) M2 end	Q(-1) M3 mid	Q(-1) M3 end	Q(0) M1 mid	Q(0) M1 end	Q(0) M2 mid	Q(0) M2 end	Q(0) M3 mid	Q(0) M3 end	Q(+1) M1 mid	Q(+1) M1 end
MFVAR														
Simple Mean	1.21	1.21	1.21	1.20	1.15	1.15	1.15	1.15	1.15	1.15	0.93	0.93	0.93	0.93
Inverse MSE	1.17	1.17	1.18	1.16	1.14	1.13	1.13	1.14	1.14	1.13	0.91	0.92	0.92	0.92
Best model	1.24	1.26	1.18	1.20	1.09	1.18	1.17	1.13	1.07	1.18	0.98	0.97	0.96	0.82
Top 5 models	1.19	1.18	1.17	1.15	1.12	1.13	1.15	1.13	1.13	1.11	0.85	0.87	0.88	0.88
MF-BVAR														
Simple Mean	1.17	1.17	1.16	1.15	1.11	1.09	1.08	1.08	1.08	1.07	0.95	0.96	0.96	0.97
Inverse MSE	1.15	1.17	1.17	1.12	1.09	1.06	1.07	1.04	1.07	1.06	0.95	0.95	0.95	0.96
Best model	1.17	1.19	1.19	1.15	1.05	1.04	1.09	1.13	1.14	1.12	0.97	0.92	0.99	1.02
Top 5 models	1.15	1.14	1.17	1.15	1.06	1.07	1.07	1.07	1.09	1.12	0.92	0.91	0.95	0.96
MIDAS														
Simple Mean	1.41	1.35	1.37	1.35	1.32	1.35	1.20	1.32	1.16	1.18	0.89	0.89	0.89	0.89
Inverse MSE	1.39	1.37	1.31	1.46	1.19	1.23	1.14	1.20	1.11	1.14	0.88	0.90	0.89	0.88
Best model	1.45	1.34	1.25	1.53	1.29	1.22	1.18	1.30	1.31	1.13	0.78	1.00	1.02	1.36
Top 5 models	1.46	1.38	1.29	1.39	1.30	1.26	1.20	1.28	1.15	1.19	0.87	0.85	0.85	0.90

Table A3: Forecasting – Different Weighting Schemes (Evaluated Using First Releases)

	Nowcast	1Q-ahead	2Q-ahead	3Q-ahead	4Q-ahead	5Q-ahead	6Q-ahead
MFVAR							
Simple Mean	0.80	1.01	1.06	1.13	1.20	1.18	1.19
Inverse MSE	0.78	1.00	1.01	1.13	1.20	1.18	1.19
Best model	0.84	1.13	1.21	1.13	1.20	1.20	1.23
Top 5 models	0.72	1.00	1.06	1.12	1.19	1.19	1.21
MF-BVAR							
Simple Mean	0.82	0.95	1.03	1.10	1.15	1.14	1.15
Inverse MSE	0.80	0.93	1.02	1.10	1.15	1.14	1.15
Best model	0.79	0.98	1.13	1.12	1.18	1.16	1.17
Top 5 models	0.75	0.91	1.02	1.09	1.14	1.12	1.13
MIDAS							
Simple Mean	0.79	1.14	1.27	1.28	1.29	1.34	1.37
Inverse MSE	0.78	1.05	1.32	1.23	1.24	1.28	1.31
Best model	0.87	1.12	1.31	1.30	1.34	1.35	1.52
Top 5 models	0.76	1.13	1.23	1.18	1.31	1.43	1.43

Table A4: Forecasting –Different Weighting Schemes (Evaluated Using Dec 2012 Vintage)

	Nowcast	1Q-ahead	2Q-ahead	3Q-ahead	4Q-ahead	5Q-ahead	6Q-ahead
MFVAR							
Simple Mean	0.93	1.15	1.22	1.28	1.35	1.37	1.35
Inverse MSE	0.92	1.14	1.16	1.28	1.35	1.37	1.35
Best model	0.97	1.18	1.31	1.29	1.36	1.37	1.38
Top 5 models	0.87	1.13	1.20	1.27	1.35	1.36	1.34
MF-BVAR							
Simple Mean	0.96	1.10	1.18	1.25	1.30	1.30	1.30
Inverse MSE	0.95	1.07	1.18	1.25	1.30	1.30	1.30
Best model	0.92	1.07	1.26	1.28	1.34	1.33	1.31
Top 5 models	0.91	1.05	1.17	1.23	1.29	1.28	1.26
MIDAS							
Simple Mean	0.89	1.22	1.44	1.45	1.49	1.54	1.54
Inverse MSE	0.90	1.15	1.46	1.39	1.43	1.48	1.48
Best model	1.00	1.19	1.42	1.43	1.51	1.55	1.66
Top 5 models	0.86	1.18	1.38	1.35	1.50	1.62	1.60

APPENDIX B: Results Based on Forecasts That Use Revised Data

Using the last vintage data instead of the data available at the time of the forecast does not consistently lower the forecast errors. There is some evidence of a decline in errors for the DFM at short horizons and also for the MF-BVAR at medium horizons. Often, however, using last vintage data worsens the forecasting performance, although the differences in the RMSE are mostly rather small.

Figure B1: RMSE Error of Real-time Nowcasts Relative to Nowcasts Based on Revised Data

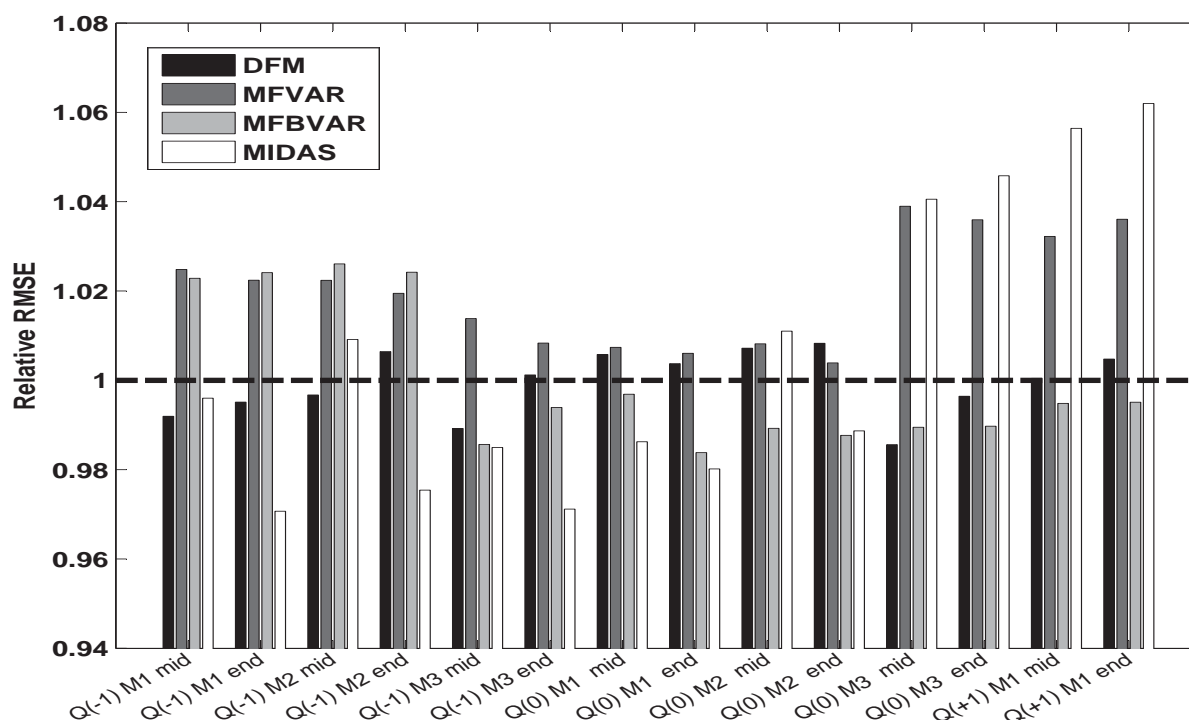
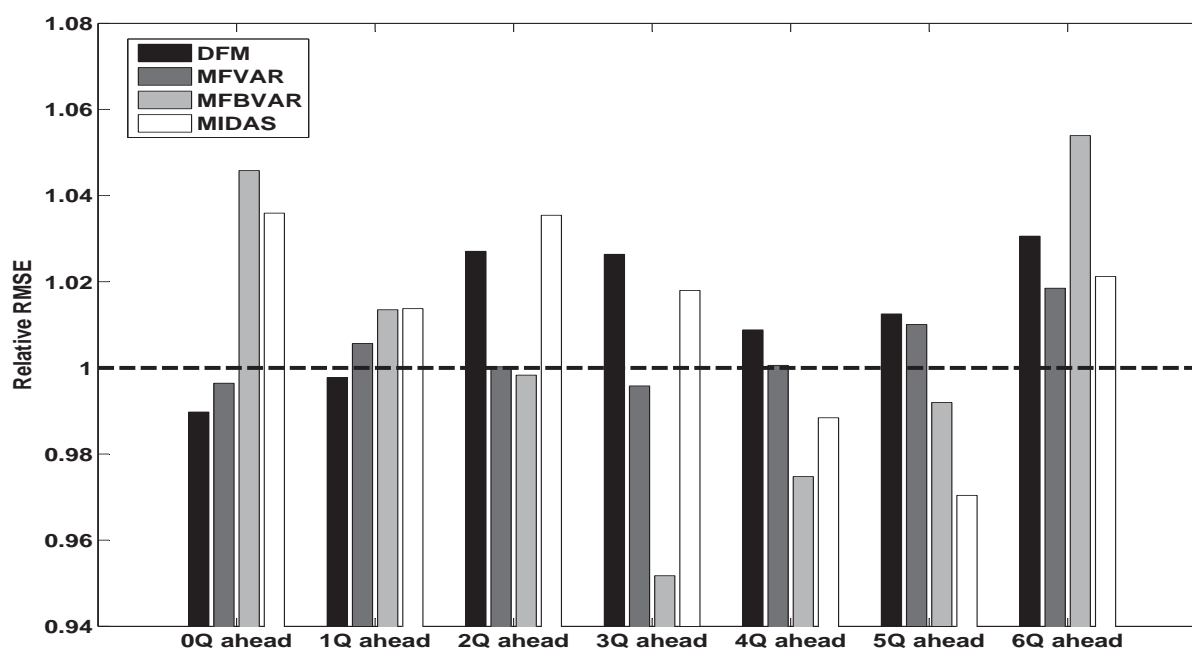


Figure B2: RMSE Error of Real-time Forecasts Relative to Forecasts Based on Revised Data



APPENDIX C: Alternative Polynomial Weights for MIDAS Models

We also evaluate a more general MIDAS model:

$$y_{t_q+1}^Q = \mu + \delta y_t^Q + \beta \sum_{j=0}^{p^Q} \sum_{i=0}^{N_M-1} w_{N_M-i+j*N_M}(\theta) X_{N_M-i, t_q-j}^M + u_{t_q+1}, \quad (C1)$$

where $w_k(\theta)$ denote the weights for the respective lags with a vector of parameters θ , and N_M denotes the number of months in the quarter. We consider two different polynomial schemes:

(i) a normalized beta polynomial scheme with a zero last lag:

$$w_k(\theta) = w_k(\theta_1, \theta_2) = \frac{x_k^{\theta_1-1} (1-x_k)^{\theta_2-1}}{\sum_{k=1}^N x_k^{\theta_1-1} (1-x_k)^{\theta_2-1}}, \text{ where } x_k = \frac{k-1}{N-1}, \quad (C2)$$

(ii) a normalized exponential Almon lag polynomial scheme:

$$w_k(\theta) = w_k(\theta_1, \theta_2) = \frac{\exp(\theta_1 k + \theta_2 k^2)}{\sum_{k=1}^N \exp(\theta_1 k + \theta_2 k^2)}. \quad (C3)$$

The index k covers all considered lags of the monthly indicator (in order from the most recent observations). The parameters μ, β, θ are estimated by nonlinear least squares.

The results of this sensitivity check generally suggest that the unrestricted MIDAS performs consistently better than the exponential and beta polynomial schemes, especially at shorter horizons.

Table C1: Nowcasting – Alternative MIDAS Polynomial Schemes

	Q(-1) M1 mid	Q(-1) M1 end	Q(-1) M2 mid	Q(-1) M2 end	Q(-1) M3 mid	Q(-1) M3 end	Q(0) M1 mid	Q(0) M1 end	Q(0) M2 mid	Q(0) M2 end	Q(0) M3 mid	Q(0) M3 end	Q(+1) M1 mid	Q(+1) M1 end
<i>Evaluated using first releases of GDP</i>														
Beta	1.22	1.19	1.22	1.21	1.20	1.19	1.13	1.21	1.12	1.11	0.86	0.84	0.84	0.86
Exp	1.21	1.19	1.22	1.20	1.24	1.19	1.14	1.23	1.13	1.11	0.86	0.84	0.84	0.86
UMIDAS	1.22	1.19	1.18	1.19	1.20	1.20	1.11	1.20	1.09	1.08	0.82	0.79	0.79	0.82
<i>Evaluated using Dec 2012 vintage</i>														
Beta	1.40	1.35	1.40	1.37	1.32	1.34	1.22	1.33	1.19	1.19	0.92	0.92	0.91	0.92
Exp	1.39	1.36	1.41	1.36	1.35	1.33	1.23	1.35	1.20	1.20	0.91	0.91	0.91	0.92
UMIDAS	1.41	1.35	1.37	1.35	1.32	1.35	1.20	1.32	1.16	1.18	0.89	0.89	0.89	0.89

For longer forecasting horizons the performance of all the MIDAS polynomials is largely comparable, with beta mostly having the smallest RMSE.

Table C2: Forecasting – Alternative MIDAS Polynomial Schemes

	Nowcast	1Q- ahead	2Q- ahead	3Q- ahead	4Q- ahead	5Q- ahead	6Q- ahead
<i>Evaluated using first releases of GDP</i>							
Beta	0.84	1.15	1.26	1.28	1.28	1.34	1.35
Exp	0.84	1.17	1.26	1.28	1.28	1.34	1.35
UMIDAS	0.79	1.14	1.27	1.28	1.29	1.34	1.37
<i>Evaluated using Dec 2012 vintage</i>							
Beta	0.92	1.23	1.43	1.45	1.48	1.53	1.53
Exp	0.91	1.25	1.43	1.46	1.48	1.54	1.52
UMIDAS	0.89	1.22	1.44	1.45	1.49	1.54	1.54

CNB WORKING PAPER SERIES

8/2014	Michal Franta David Havrlant Marek Rusnák	<i>Forecasting Czech GDP using mixed-frequency data models</i>
7/2014	Tomáš Adam Soňa Benecká Jakub Matějů	<i>Risk aversion, financial stress and their non-linear impact on exchange rates</i>
6/2014	Tomáš Havránek Roman Horváth Zuzana Iršová Marek Rusnák	<i>Cross-country heterogeneity in intertemporal substitution</i>
5/2014	Ruslan Aliyev Dana Hájková Ivana Kubicová	<i>The impact of monetary policy on financing of Czech firms</i>
4/2014	Jakub Matějů	<i>Explaining the strength and efficiency of monetary policy transmission: A panel of impulse responses from a Time-varying Parameter Model</i>
3/2014	Soňa Benecká Luboš Komárek	<i>International reserves: Facing model uncertainty</i>
2/2014	Kamil Galuščák Petr Hlaváč Petr Jakubík	<i>Stress testing the private household sector using microdata</i>
1/2014	Martin Pospíšil Jiří Schwarz	<i>Bankruptcy, investment, and financial constraints: Evidence from a post-transition economy</i>
15/2013	Jaromír Baxa Miroslav Plašil Bořek Vašíček	<i>Inflation and the steepchase between economic activity variables</i>
14/2013	Narcisa Kadlčáková Luboš Komárek Zlataše Komárková Michal Hlaváček	<i>Identification of asset price misalignments on financial markets with extreme value theory</i>
13/2013	Giovanni Calice RongHui Miao Filip Štěrba Bořek Vašíček	<i>Short-term determinants of the idiosyncratic sovereign risk premium: A regime-dependent analysis for European credit default swaps</i>
12/2013	Michal Skořepa Luboš Komárek	<i>Sources of asymmetric shocks: The exchange rate or other culprits?</i>
11/2013	Alexis Derviz	<i>Collateral composition, diversification risk, and systemically important merchant banks</i>
10/2013	Tomáš Konečný Oxana Babecká Kucharčuková	<i>Evaluating the links between the financial and real sectors in a small open economy: The case of the Czech Republic</i>
9/2013	Michal Franta	<i>The effect of non-linearity between credit conditions and economic activity on density forecasts</i>
8/2013	Jan Babecký Tomáš Havránek	<i>Structural reforms and economic growth: A meta-analysis</i>
7/2013	Michal Andrle Jan Brůha Serhat Solmaz	<i>Inflation and output comovement in the Euro Area: Love at second sight?</i>

6/2013	Marek Rusnák	<i>Nowcasting Czech GDP in real time</i>
5/2013	Tomáš Havránek Roman Horváth Petra Valičková	<i>Financial development and economic growth: A meta-analysis</i>
4/2013	Peter Tóth	<i>Currency shocks to export sales of importers: A heterogeneous firms model and Czech micro estimates</i>
3/2013	Aleš Bulíř Jaromír Hurník Kateřina Šmídková	<i>Inflation reports and models: How well do central banks really write?</i>
2/2013	František Brázdík	<i>Expected regime change: Transition toward nominal exchange rate stability</i>
1/2013	Adam Geršl Jitka Lešánovská	<i>Explaining the Czech interbank market risk premium</i>
15/2012	Róbert Ambriško Jan Babecký Jakub Ryšánek Vilém Valenta	<i>Assessing the impact of fiscal measures on the Czech economy</i>
14/2012	Václav Hausenblas Ivana Kubicová Jitka Lešánovská	<i>Contagion risk in the Czech financial system: A network analysis and simulation approach</i>
13/2012	Michal Franta	<i>Macroeconomic effects of fiscal policy in the Czech Republic: Evidence based on various identification approaches in a VAR framework</i>
12/2012	Konstantin Belyaev Aelita Belyaeva Tomáš Konečný Jakub Seidler Martin Vojtek	<i>Macroeconomic factors as drivers of LGD prediction: Empirical evidence from the Czech Republic</i>
11/2012	Adam Geršl Petr Jakubík Tomáš Konečný Jakub Seidler	<i>Dynamic stress testing: The framework for testing banking sector resilience used by the Czech National Bank</i>
10/2012	Tomáš Havránek Marek Rusnák	<i>Transmission lags of monetary policy: A meta-analysis</i>
9/2012	Volha Audzei František Brázdík	<i>Monetary policy and exchange rate dynamics: The exchange rate as a shock absorber</i>
8/2012	Alexis Derviz Jakub Seidler	<i>Coordination incentives in cross-border macroprudential regulation</i>
7/2012	Peter Claeys Bořek Vašíček	<i>Measuring sovereign bond spillover in Europe and the impact of rating news</i>
6/2012	Michal Franta Jan Libich Petr Stehlík	<i>Tracking monetary-fiscal interactions across time and space</i>
5/2012	Roman Horváth Jakub Seidler Laurent Weill	<i>Bank capital and liquidity creation: Granger causality evidence</i>
4/2012	Jaromír Baxa Miroslav Plašil Bořek Vašíček	<i>Changes in inflation dynamics under inflation targeting? Evidence from Central European countries</i>

3/2012	Soňa Benecká Tomáš Holub Narcisa Liliana Kadlčáková Ivana Kubicová	<i>Does central bank financial strength matter for inflation? An empirical analysis</i>
2/2012	Adam Geršl Petr Jakubík Dorota Kowalczyk Steven Ongena José-Luis Peydró Alcalde	<i>Monetary conditions and banks' behaviour in the Czech Republic</i>
1/2012	Jan Babecký Kamil Dybczak	<i>Real wage flexibility in the European Union: New evidence from the labour cost data</i>
15/2011	Jan Babecký Kamil Galuščák Lubomír Lízal	<i>Firm-level labour demand: Adjustment in good times and during the crisis</i>
14/2011	Vlastimil Čadek Helena Rottová Branislav Saxa	<i>Hedging behaviour of Czech exporting firms</i>
13/2011	Michal Franta Roman Horváth Marek Rusnák	<i>Evaluating changes in the monetary transmission mechanism in the Czech Republic</i>
12/2011	Jakub Ryšánek Jaromír Tonner Osvald Vašíček	<i>Monetary policy implications of financial frictions in the Czech Republic</i>
11/2011	Zlataše Komárková Adam Geršl Luboš Komárek	<i>Models for stress testing Czech banks' liquidity risk</i>
10/2011	Michal Franta Jozef Baruník Roman Horváth Kateřina Šmídková	<i>Are Bayesian fan charts useful for central banks? Uncertainty, forecasting, and financial stability stress tests</i>
9/2011	Kamil Galuščák Lubomír Lízal	<i>The impact of capital measurement error correction on firm-level production function estimation</i>
8/2011	Jan Babecký Tomáš Havránek Jakub Matějů Marek Rusnák Kateřina Šmídková Bořek Vašíček	<i>Early warning indicators of economic crises: Evidence from a panel of 40 developed countries</i>
7/2011	Tomáš Havránek Zuzana Iršová	<i>Determinants of horizontal spillovers from FDI: Evidence from a large meta-analysis</i>
6/2011	Roman Horváth Jakub Matějů	<i>How are inflation targets set?</i>
5/2011	Bořek Vašíček	<i>Is monetary policy in the new EU member states asymmetric?</i>
4/2011	Alexis Derviz	<i>Financial frictions, bubbles, and macroprudential policies</i>
3/2011	Jaromír Baxa Roman Horváth Bořek Vašíček	<i>Time-varying monetary-policy rules and financial stress: Does financial instability matter for monetary policy?</i>

2/2011	Marek Rusnák Tomáš Havránek Roman Horváth	<i>How to solve the price puzzle? A meta-analysis</i>
1/2011	Jan Babecký Aleš Bulíř Kateřina Šmídková	<i>Sustainable real exchange rates in the new EU member states: What did the Great Recession change?</i>
15/2010	Ke Pang Pierre L. Siklos	<i>Financial frictions and credit spreads</i>
14/2010	Filip Novotný Marie Raková	<i>Assessment of consensus forecasts accuracy: The Czech National Bank perspective</i>
13/2010	Jan Filáček Branislav Saxa	<i>Central bank forecasts as a coordination device</i>
12/2010	Kateřina Arnoštová David Havrlant Luboš Růžicka Peter Tóth	<i>Short-term forecasting of Czech quarterly GDP using monthly indicators</i>
11/2010	Roman Horváth Kateřina Šmídková Jan Zápal	<i>Central banks' voting records and future policy</i>
10/2010	Alena Bičáková Zuzana Prelcová Renata Pašaličová	<i>Who borrows and who may not repay?</i>
9/2010	Luboš Komárek Jan Babecký Zlataše Komárková	<i>Financial integration at times of financial instability</i>
8/2010	Kamil Dybczak Peter Tóth David Voňka	<i>Effects of price shocks to consumer demand. Estimating the QUAIDS demand system on Czech Household Budget Survey data</i>
7/2010	Jan Babecký Philip Du Caju Theodora Kosma Martina Lawless Julián Messina Tairi Rõõm	<i>The margins of labour cost adjustment: Survey evidence from European firms</i>
6/2010	Tomáš Havránek Roman Horváth Jakub Matějů	<i>Do financial variables help predict macroeconomic environment? The case of the Czech Republic</i>
5/2010	Roman Horváth Luboš Komárek Filip Rozsypal	<i>Does money help predict inflation? An empirical assessment for Central Europe</i>
4/2010	Oxana Babecká Kucharčuková Jan Babecký Martin Raiser	<i>A gravity approach to modelling international trade in South-Eastern Europe and the Commonwealth of Independent States: The role of geography, policy and institutions</i>
3/2010	Tomáš Havránek Zuzana Iršová	<i>Which foreigners are worth wooing? A Meta-analysis of vertical spillovers from FDI</i>
2/2010	Jaromír Baxa Roman Horváth Bořek Vašíček	<i>How does monetary policy change? Evidence on inflation targeting countries</i>
1/2010	Adam Geršl Petr Jakubík	<i>Relationship lending in the Czech Republic</i>

15/2009	David N. DeJong Roman Liesenfeld Guilherme V. Moura Jean-Francois Richard Hariharan Dharmarajan	<i>Efficient likelihood evaluation of state-space representations</i>
14/2009	Charles W. Calomiris	<i>Banking crises and the rules of the game</i>
13/2009	Jakub Seidler Petr Jakubík	<i>The Merton approach to estimating loss given default: Application to the Czech Republic</i>
12/2009	Michal Hlaváček Luboš Komárek	<i>Housing price bubbles and their determinants in the Czech Republic and its regions</i>
11/2009	Kamil Dybczak Kamil Galuščák	<i>Changes in the Czech wage structure: Does immigration matter?</i>
10/2009	Jiří Böhm Petr Král Branislav Saxa	<i>Perception is always right: The CNB's monetary policy in the media</i>
9/2009	Alexis Derviz Marie Raková	<i>Funding costs and loan pricing by multinational bank affiliates</i>
8/2009	Roman Horváth Anca Maria Podpiera	<i>Heterogeneity in bank pricing policies: The Czech evidence</i>
7/2009	David Kocourek Filip Pertold	<i>The impact of early retirement incentives on labour market participation: Evidence from a parametric change in the Czech Republic</i>
6/2009	Nauro F. Campos Roman Horváth	<i>Reform redux: Measurement, determinants and reversals</i>
5/2009	Kamil Galuščák Mary Keeney Daphne Nicolitsas Frank Smets Pawel Strzelecki Matija Vodopivec	<i>The determination of wages of newly hired employees: Survey evidence on internal versus external factors</i>
4/2009	Jan Babecký Philip Du Caju Theodora Kosma Martina Lawless Julián Messina Tairi Rõõm	<i>Downward nominal and real wage rigidity: Survey evidence from European firms</i>
3/2009	Jiri Podpiera Laurent Weill	<i>Measuring excessive risk-taking in banking</i>
2/2009	Michal Andrlé Tibor Hlédik Ondra Kameník Jan Vlček	<i>Implementing the new structural model of the Czech National Bank</i>
1/2009	Kamil Dybczak Jan Babecký	<i>The impact of population ageing on the Czech economy</i>

14/2008	Gabriel Fagan Vitor Gaspar	<i>Macroeconomic adjustment to monetary union</i>
13/2008	Giuseppe Bertola Anna Lo Prete	<i>Openness, financial markets, and policies: Cross-country and dynamic patterns</i>
12/2008	Jan Babecký	<i>Survey on wage and price formation of Czech firms</i>

	Kamil Dybczak Kamil Galuščák	
11/2008	Dana Hájková	<i>The measurement of capital services in the Czech Republic</i>
10/2008	Michal Franta	<i>Time aggregation bias in discrete time models of aggregate duration data</i>
9/2008	Petr Jakubík Christian Schmieder	<i>Stress testing credit risk: Is the Czech Republic different from Germany?</i>
8/2008	Sofia Bauducco Aleš Bulíř Martin Čihák	<i>Monetary policy rules with financial instability</i>
7/2008	Jan Brůha Jiří Podpiera	<i>The origins of global imbalances</i>
6/2008	Jiří Podpiera Marie Raková	<i>The price effects of an emerging retail market</i>
5/2008	Kamil Dybczak David Voňka Nico van der Windt	<i>The effect of oil price shocks on the Czech economy</i>
4/2008	Magdalena M. Borys Roman Horváth	<i>The effects of monetary policy in the Czech Republic: An empirical study</i>
3/2008	Martin Cincibuch Tomáš Holub Jaromír Hurník	<i>Central bank losses and economic convergence</i>
2/2008	Jiří Podpiera	<i>Policy rate decisions and unbiased parameter estimation in conventionally estimated monetary policy rules</i>
1/2008	Balázs Égert Doubravko Mihaljek	<i>Determinants of house prices in Central and Eastern Europe</i>
<hr/>		
17/2007	Pedro Portugal	<i>U.S. unemployment duration: Has long become longer or short become shorter?</i>
16/2007	Yuliya Rychalovská	<i>Welfare-based optimal monetary policy in a two-sector small open economy</i>
15/2007	Juraj Antal František Brázdík	<i>The effects of anticipated future change in the monetary policy regime</i>
14/2007	Aleš Bulíř Kateřina Šmídková Viktor Kotlán David Navrátil	<i>Inflation targeting and communication: Should the public read inflation reports or tea leaves?</i>
13/2007	Martin Cincibuch Martina Horníková	<i>Measuring the financial markets' perception of EMU enlargement: The role of ambiguity aversion</i>
12/2007	Oxana Babetskaia- Kukharchuk	<i>Transmission of exchange rate shocks into domestic inflation: The case of the Czech Republic</i>
11/2007	Jan Filáček	<i>Why and how to assess inflation target fulfilment</i>
10/2007	Michal Franta Branislav Saxa Kateřina Šmídková	<i>Inflation persistence in new EU member states: Is it different than in the Euro area members?</i>
9/2007	Kamil Galuščák Jan Pavel	<i>Unemployment and inactivity traps in the Czech Republic: Incentive effects of policies</i>
8/2007	Adam Geršl Ieva Rubene Tina Zumer	<i>Foreign direct investment and productivity spillovers: Updated evidence from Central and Eastern Europe</i>

7/2007	Ian Babetskii Luboš Komárek Zlatuše Komárková	<i>Financial integration of stock markets among new EU member states and the euro area</i>
6/2007	Anca Pruteanu-Podpiera Laurent Weill Franziska Schobert	<i>Market power and efficiency in the Czech banking sector</i>
5/2007	Jiří Podpiera Laurent Weill	<i>Bad luck or bad management? Emerging banking market experience</i>
4/2007	Roman Horváth	<i>The time-varying policy neutral rate in real time: A predictor for future inflation?</i>
3/2007	Jan Brůha Jiří Podpiera Stanislav Polák	<i>The convergence of a transition economy: The case of the Czech Republic</i>
2/2007	Ian Babetskii Nauro F. Campos	<i>Does reform work? An econometric examination of the reform-growth puzzle</i>
1/2007	Ian Babetskii Fabrizio Coricelli Roman Horváth	<i>Measuring and explaining inflation persistence: Disaggregate evidence on the Czech Republic</i>
13/2006	Frederic S. Mishkin Klaus Schmidt-Hebbel	<i>Does inflation targeting make a difference?</i>
12/2006	Richard Disney Sarah Bridges John Gathergood	<i>Housing wealth and household indebtedness: Is there a household 'financial accelerator'?</i>
11/2006	Michel Juillard Ondřej Kameník Michael Kumhof Douglas Laxton	<i>Measures of potential output from an estimated DSGE model of the United States</i>
10/2006	Jiří Podpiera Marie Raková	<i>Degree of competition and export-production relative prices when the exchange rate changes: Evidence from a panel of Czech exporting companies</i>
9/2006	Alexis Derviz Jiří Podpiera	<i>Cross-border lending contagion in multinational banks</i>
8/2006	Aleš Bulíř Jaromír Hurník	<i>The Maastricht inflation criterion: "Saints" and "Sinners"</i>
7/2006	Alena Bičáková Jiří Slačálek Michal Slavík	<i>Fiscal implications of personal tax adjustments in the Czech Republic</i>
6/2006	Martin Fukač Adrian Pagan	<i>Issues in adopting DSGE models for use in the policy process</i>
5/2006	Martin Fukač	<i>New Keynesian model dynamics under heterogeneous expectations and adaptive learning</i>
4/2006	Kamil Dybczak Vladislav Flek Dana Hájková Jaromír Hurník	<i>Supply-side performance and structure in the Czech Republic (1995–2005)</i>
3/2006	Aleš Krejdl	<i>Fiscal sustainability – definition, indicators and assessment of Czech public finance sustainability</i>
2/2006	Kamil Dybczak	<i>Generational accounts in the Czech Republic</i>

1/2006	Ian Babetskii	<i>Aggregate wage flexibility in selected new EU member states</i>
14/2005	Stephen G. Cecchetti	<i>The brave new world of central banking: The policy challenges posed by asset price booms and busts</i>
13/2005	Robert F. Engle Jose Gonzalo Rangel	<i>The spline GARCH model for unconditional volatility and its global macroeconomic causes</i>
12/2005	Jaromír Beneš Tibor Hlédik Michael Kumhof David Vávra	<i>An economy in transition and DSGE: What the Czech national bank's new projection model needs</i>
11/2005	Marek Hlaváček Michael Koňák Josef Čada	<i>The application of structured feedforward neural networks to the modelling of daily series of currency in circulation</i>
10/2005	Ondřej Kameník	<i>Solving SDGE models: A new algorithm for the sylvester equation</i>
9/2005	Roman Šustek	<i>Plant-level nonconvexities and the monetary transmission mechanism</i>
8/2005	Roman Horváth	<i>Exchange rate variability, pressures and optimum currency area criteria: Implications for the central and eastern European countries</i>
7/2005	Balázs Égert Luboš Komárek	<i>Foreign exchange interventions and interest rate policy in the Czech Republic: Hand in glove?</i>
6/2005	Anca Podpiera Jiří Podpiera	<i>Deteriorating cost efficiency in commercial banks signals an increasing risk of failure</i>
5/2005	Luboš Komárek Martin Melecký	<i>The behavioural equilibrium exchange rate of the Czech koruna</i>
4/2005	Kateřina Arnoštová Jaromír Hurník	<i>The monetary transmission mechanism in the Czech Republic (evidence from VAR analysis)</i>
3/2005	Vladimír Benáček Jiří Podpiera Ladislav Prokop	<i>Determining factors of Czech foreign trade: A cross-section time series perspective</i>
2/2005	Kamil Galuščák Daniel Münich	<i>Structural and cyclical unemployment: What can we derive from the matching function?</i>
1/2005	Ivan Babouček Martin Jančár	<i>Effects of macroeconomic shocks to the quality of the aggregate loan portfolio</i>
10/2004	Aleš Bulíř Kateřina Šmídková	<i>Exchange rates in the new EU accession countries: What have we learned from the forerunners</i>
9/2004	Martin Cincibuch Jiří Podpiera	<i>Beyond Balassa-Samuelson: Real appreciation in tradables in transition countries</i>
8/2004	Jaromír Beneš David Vávra	<i>Eigenvalue decomposition of time series with application to the Czech business cycle</i>
7/2004	Vladislav Flek, ed.	<i>Anatomy of the Czech labour market: From over-employment to under-employment in ten years?</i>
6/2004	Narcisa Kadlčáková Joerg Keplinger	<i>Credit risk and bank lending in the Czech Republic</i>
5/2004	Petr Král	<i>Identification and measurement of relationships concerning inflow of FDI: The case of the Czech Republic</i>
4/2004	Jiří Podpiera	<i>Consumers, consumer prices and the Czech business cycle identification</i>

3/2004	Anca Pruteanu	<i>The role of banks in the Czech monetary policy transmission mechanism</i>
2/2004	Ian Babetskii	<i>EU enlargement and endogeneity of some OCA criteria: Evidence from the CEECs</i>
1/2004	Alexis Derviz Jiří Podpiera	<i>Predicting bank CAMELS and S&P ratings: The case of the Czech Republic</i>

CNB RESEARCH AND POLICY NOTES

3/2014	Michal Franta Tomáš Holub Petr Král Ivana Kubicová Kateřina Šmídková Bořek Vašíček	<i>The exchange rate as an instrument at zero interest rates: The case of the Czech Republic</i>
2/2014	František Brázdík Zuzana Humplová František Kopřiva	<i>Evaluating a structural model forecast: Decomposition approach</i>
1/2014	Michal Skořepa Jakub Seidler	<i>Capital buffers based on banks' domestic systemic importance: Selected issues</i>
2/2013	Jan Brůha Tibor Hlédik Tomáš Holub Jiří Polanský Jaromír Tonner	<i>Incorporating judgments and dealing with data uncertainty in forecasting at the Czech National Bank</i>
1/2013	Oxana Babecká Kuchařčuková Michal Franta Dana Hájková Petr Král Ivana Kubicová Anca Podpiera Branislav Saxa	<i>What we know about monetary policy transmission in the Czech Republic: Collection of empirical results</i>
3/2012	Jan Frait Zlataše Komárková	<i>Macroprudential policy and its instruments in a small EU economy</i>
2/2012	Zlataše Komárková Marcela Gronychová	<i>Models for stress testing in the insurance sector</i>
1/2012	Róbert Ambriško Vítězslav Augusta Dana Hájková Petr Král Pavla Netušilová Milan Říkovský Pavel Soukup	<i>Fiscal discretion in the Czech Republic in 2001-2011: Has it been stabilizing?</i>
3/2011	František Brázdík Michal Hlaváček Aleš Maršál	<i>Survey of research on financial sector modelling within DSGE models: What central banks can learn from it</i>
2/2011	Adam Geršl Jakub Seidler	<i>Credit growth and capital buffers: Empirical evidence from Central and Eastern European countries</i>

1/2011	Jiří Böhm Jan Filáček Ivana Kubicová Romana Zamazalová	<i>Price-level targeting – A real alternative to inflation targeting?</i>
1/2008	Nicos Christodoulakis	<i>Ten years of EMU: Convergence, divergence and new policy priorities</i>
2/2007	Carl E. Walsh	<i>Inflation targeting and the role of real objectives</i>
1/2007	Vojtěch Benda Luboš Růžicka	<i>Short-term forecasting methods based on the LEI approach: The case of the Czech Republic</i>
2/2006	Garry J. Schinasi	<i>Private finance and public policy</i>
1/2006	Ondřej Schneider	<i>The EU budget dispute – A blessing in disguise?</i>
5/2005	Jan Stráský	<i>Optimal forward-looking policy rules in the quarterly projection model of the Czech National Bank</i>
4/2005	Vít Bárta	<i>Fulfilment of the Maastricht inflation criterion by the Czech Republic: Potential costs and policy options</i>
3/2005	Helena Šůvová Eva Kozelková David Zeman Jaroslava Bauerová	<i>Eligibility of external credit assessment institutions</i>
2/2005	Martin Čihák Jaroslav Heřmánek	<i>Stress testing the Czech banking system: Where are we? Where are we going?</i>
1/2005	David Navrátil Viktor Kotlán	<i>The CNB's policy decisions – Are they priced in by the markets?</i>
4/2004	Aleš Bulíř	<i>External and fiscal sustainability of the Czech economy: A quick look through the IMF's night-vision goggles</i>
3/2004	Martin Čihák	<i>Designing stress tests for the Czech banking system</i>
2/2004	Martin Čihák	<i>Stress testing: A review of key concepts</i>
1/2004	Tomáš Holub	<i>Foreign exchange interventions under inflation targeting: The Czech experience</i>

CNB ECONOMIC RESEARCH BULLETIN

November 2014	<i>Macroprudential research: Selected issues</i>
April 2014	<i>Stress-testing analyses of the Czech financial system</i>
November 2013	<i>Macroeconomic effects of fiscal policy</i>
April 2013	<i>Transmission of monetary policy</i>
November 2012	<i>Financial stability and monetary policy</i>
April 2012	<i>Macroeconomic forecasting: Methods, accuracy and coordination</i>
November 2011	<i>Macro-financial linkages: Theory and applications</i>
April 2011	<i>Monetary policy analysis in a central bank</i>
November 2010	<i>Wage adjustment in Europe</i>
May 2010	<i>Ten years of economic research in the CNB</i>
November 2009	<i>Financial and global stability issues</i>
May 2009	<i>Evaluation of the fulfilment of the CNB's inflation targets 1998–2007</i>

December 2008	<i>Inflation targeting and DSGE models</i>
April 2008	<i>Ten years of inflation targeting</i>
December 2007	<i>Fiscal policy and its sustainability</i>
August 2007	<i>Financial stability in a transforming economy</i>
November 2006	<i>ERM II and euro adoption</i>
August 2006	<i>Research priorities and central banks</i>
November 2005	<i>Financial stability</i>
May 2005	<i>Potential output</i>
October 2004	<i>Fiscal issues</i>
May 2004	<i>Inflation targeting</i>
December 2003	<i>Equilibrium exchange rate</i>

Czech National Bank
Economic Research Department
Na Příkopě 28, 115 03 Praha 1
Czech Republic
phone: +420 2 244 12 321
fax: +420 2 244 14 278
<http://www.cnb.cz>
e-mail: research@cnb.cz
ISSN 1803-7070