



národní
úložiště
šedé
literatury

InCites: Practical Aspects and Effective Use

Lipitakis, Evangelia A. E. C.
2014

Dostupný z <http://www.nusl.cz/ntk/nusl-175801>

Dílo je chráněno podle autorského zákona č. 121/2000 Sb.

Licence Creative Commons Uveďte autora-Neužívejte dílo komerčně-Nezasahujte do díla 3.0 Česko

Tento dokument byl stažen z Národního úložiště šedé literatury (NUŠL).

Datum stažení: 02.05.2024

Další dokumenty můžete najít prostřednictvím vyhledávacího rozhraní nusl.cz .



THOMSON REUTERS

THE USE OF INCITES IN RESEARCH PERFORMANCE EVALUATION

DR. EVANGELIA A.E.C. LIPITAKIS
OCTOBER 2014, PRAGUE

INCITES

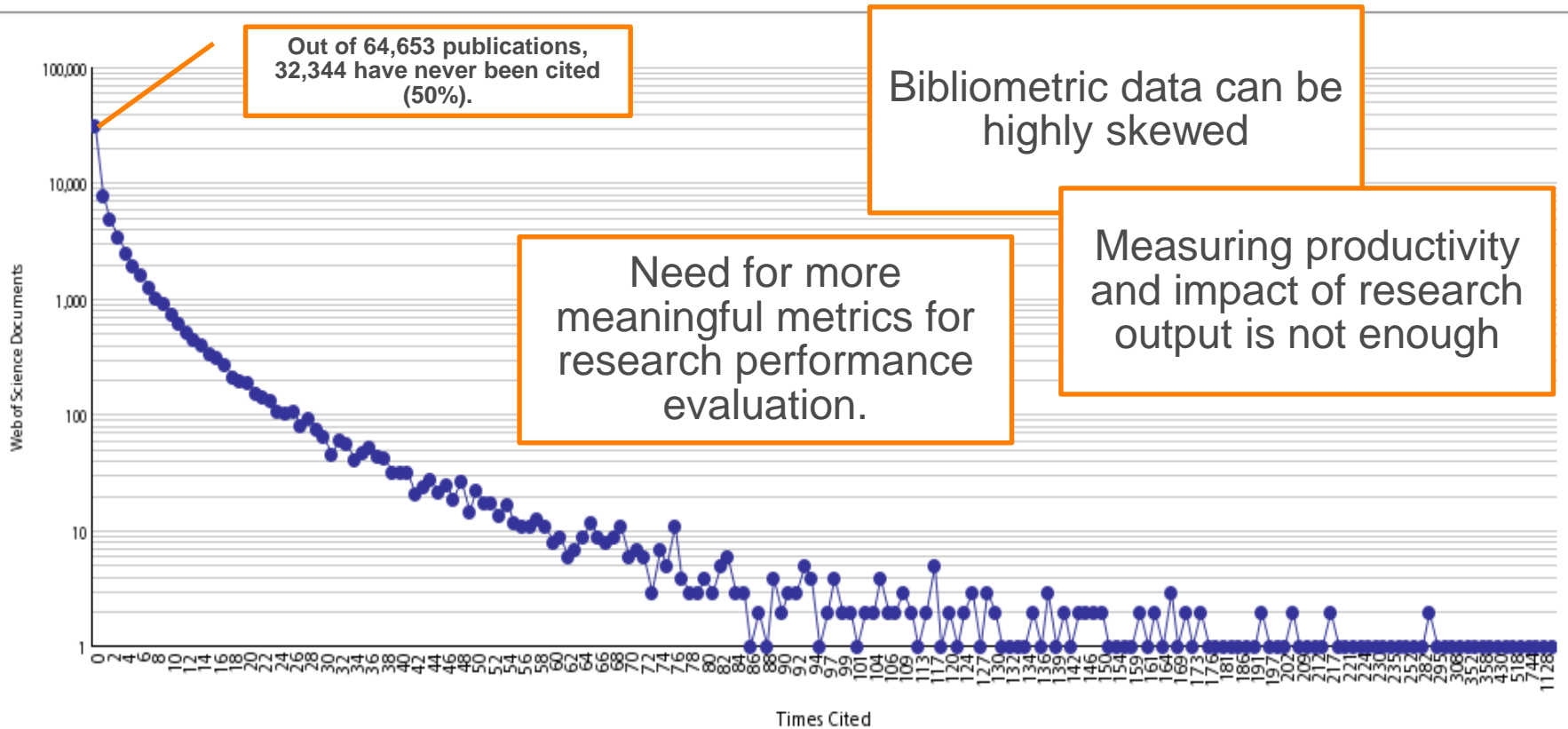
Bibliometric analysis of research output and impact with peer comparisons.



InCites – RPP: Citation Frequency Distribution

Report Limited To

Dataset: Czech Republic: 2005-2011: InCites Appraisal Dataset
Report Type: Citation Frequency Distribution
Time Period: 2005 - 2011
Additional Information: Cite this report as InCitesTM, Thomson Reuters (2014). Report Created: Jan 4, 2014 Data Processed Feb 14, 2011 5:34:23 PM Data Source: Web of Science ® This data is reproduced under Science business of Thomson Reuters. Subject area baseline data processed Unavailable



InCites – Why Normalized Metrics?

**The average number of citations varies significantly across disciplines
(Field normalization)**

**The average citation maturity rate differs between fields
(Field, Time normalization)**

**Citations are dynamic; they grow over time and cannot be compared across different time periods
(Time normalization)**

**Different publication types have different citation behaviour
(Publication type normalization)**



InCites - Article Level Metrics

'How many citations should I expect from my papers?'

How do my papers perform in my field?'

'How do other researchers perform in my field?'

'How do my papers perform in the journals I publish?'

'How is my research perceived by the journals I publish in?'

'Knowing I am better than average is not enough. Where do my research papers stand in competition to other similar papers?'

The ratio of all citations over all publications in a given year, **journal** and publication type

Indicator of performance in the **field**:
If >1, performs higher than average
If <1, performs lower than average

Article Title	Authors	Source	Volume	Issue	Pages	Publication Date	Times Cited	Journal Expected Citations	Category Expected Citations	Journal Normalized Citation Impact	Normalized Citation Impact	Percentile in Subject Area	Journal Impact Factor
Human capital creation, accumulation and management in Lithuania: The case of national and foreign capital enterprises	GRUNDEY, DAINORA; VARNAS, DARIUS	TRANSFORMATIONS IN BUSINESS & ECONOMICS	5	3	81-105	2006	15	4.31	12.14	3.48	1.24	20.53	0.26

A class of advanced bibliometric indicators for quantitative research performance evaluation

The ratio of all citations over all publications in a given **journal**, year and publication type

Indicator of performance in the **journal**:
If >1, performs higher than average
If <1, performs lower than average

Percentile is a value above which a certain proportion of the observations fall

Percentiles allow the classification of publications into meaningful citation impact classes

The smaller the percentile number, the higher the number of citations

InCites – Individual Researcher

Examples of how InCites users are applying the data

- Identify high-impact researchers in each department and use them as mentors for other faculty members.

Monitor research performance in the **field**:
If >1, performs higher than average
If <1, performs lower than average

Monitor research performance in the **journal**:
If >1, performs higher than average
If <1, performs lower than average

Name	Rank	Web of Science Documents	Times Cited	Citation Impact	h-index	Normalized Citation Impact	Journal Normalized Citation
Researcher A	1	66	291	4.4	9	1.32	1.86
Researcher B	2	62	289	4.66	9	0.45	0.72

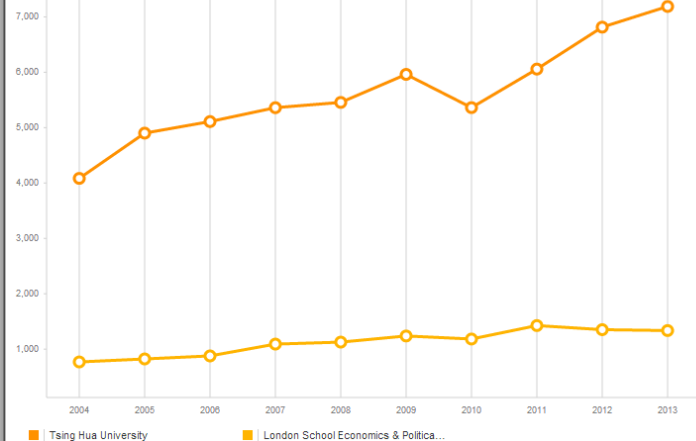
Differentiate between research output of same productivity and impact in terms of its performance in category and journal dataset and use information to enhance your research performance

Normalized Citation Impact (NCI) - Institutions

For example, lets try to compare LSE and Tsing-Hua University..

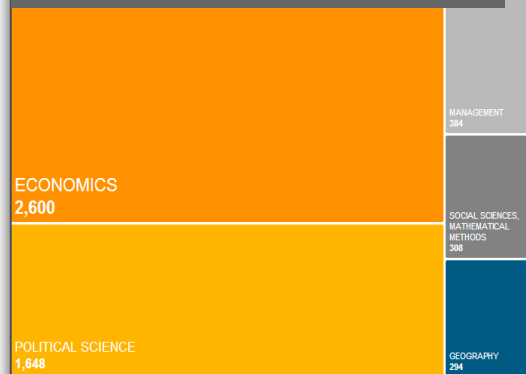
Different Publication Output

Productivity - # of WoS Documents

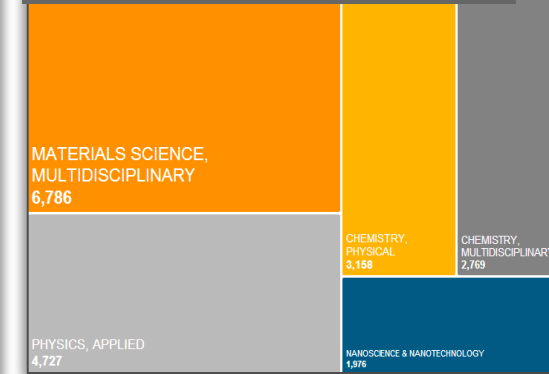


Different Research Areas

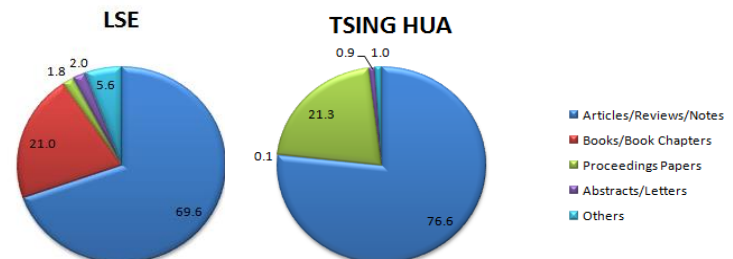
LSE - Top 5 WoS Areas



Tsing Hua - Top 5 WoS Areas



Different Publication Types



Normalized Citation Impact (NCI) - Institutions

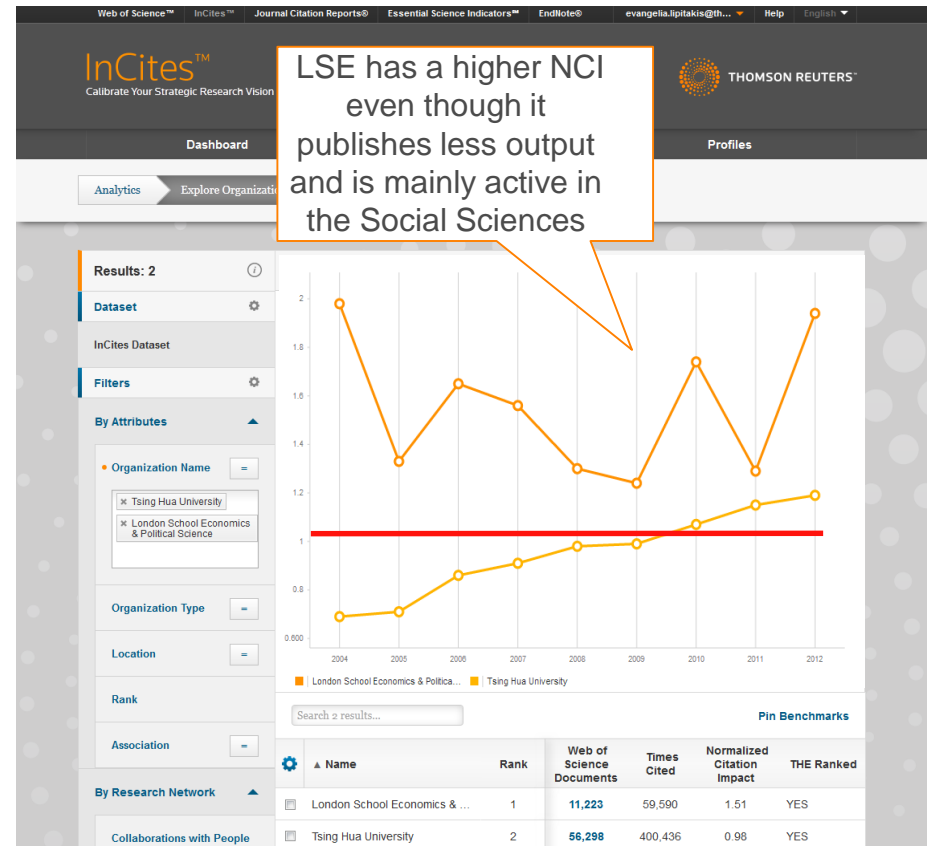
The **Normalized Citation Impact** indicator allows meaningful comparisons of institutions/countries in *different subject mix* and *different publication rates*

‘How do my papers perform in my field?’
‘How do other institutions perform in my field?’



World University Rankings 2013-2014

Rank	Institution	Location	Overall score
32	London School of Economics and Political Science (LSE)	United Kingdom	69.8
50	Tsinghua University	China	63.5



A CLASS OF BIBLIOMETRIC INDICATORS FOR RESEARCH PERFORMANCE EVALUATION

Apply key quantitative based performance indicators as accountability measures to support funding proposals, foster strategic collaborations and make informed decisions.



INCITES BENCHMARKING & ANALYTICS

Benchmark

Analyze

Collaborate

Evaluate



User friendly and interoperable platform combining all TR analytic products



Create research entities at all levels
(author, research group, institution, country, field, publication output)



Select from a wide range of advanced bibliometric indicators



Apply flexible analysis with multiple filters



Analyze big datasets instantly
(Create customized datasets in WoS and export them to InCites for analysis, coming soon)



Produce enhanced visualizations, user friendly reports and comprehensive tables

INCITES 2 DATA OVERVIEW

**Source Edition: Web of Science
Core Collection Data**

- SCIE, SSCI, A&HCI, CPCI-S, CPCI-SSH, BKCI-S, BKCI-SSH

Citing Edition:

- ALL

Document Types:

- ALL (Articles, Reviews, Letters, Editorials, Conference Proceedings, Books, Book Chapters, etc)

Organizations:

- 4,600 unified organizations

Regions:

- 220 Countries

Subject Schemas:

- 11 Discipline Schemas (including WoS & ESI categories and regional schemas)

Publication Types:

- 98,000+ Publication types from Web of Science Core Collection

Time Period:

- 1 Year, Cumulative

Data and Benchmarks:

- Will be updated bimonthly

Source and Citing Years:

- 2004-2013 (30 years of historic data, coming soon)

INCITES PROFILING SYSTEM Powered by Converis

Web of Science® InCites™ Journal Citation Reports® Essential Science Indicators EndNote® Research Portal Help My Settings Logout

CONVERIS 5
Research Information System

THOMSON REUTERS™

Scott M. J. Matheson, PH.D.
Researcher

Dashboard Analytics **Converis**

Dashboard
Data last updated 9/26/2013

Search this set...

Notifications

- A Tubular Goodbye for Flourescent Light Bulbs**
If you've worked in an office, you're probably familiar with the soft glow of fluoresent tubes drifting from the ceiling. If Europ...
The New York Times, Sep 26, 2013
- Collegiate Ingenuity: MIT Graduates Are Hitting The Ground and Running**
consectetur adipisicing elit, sed do eiusmod tempor incididunt u...
Popular Mechanics, Sep 26, 2013
- Can Nickles Save The World?**
Duis aute irure dolor in reprehenderit in voluptate velit esse cillum dolore eu fugiat nulla pariatur. Excepteur sint occaecat c...
Article Source, Sep 26, 2013

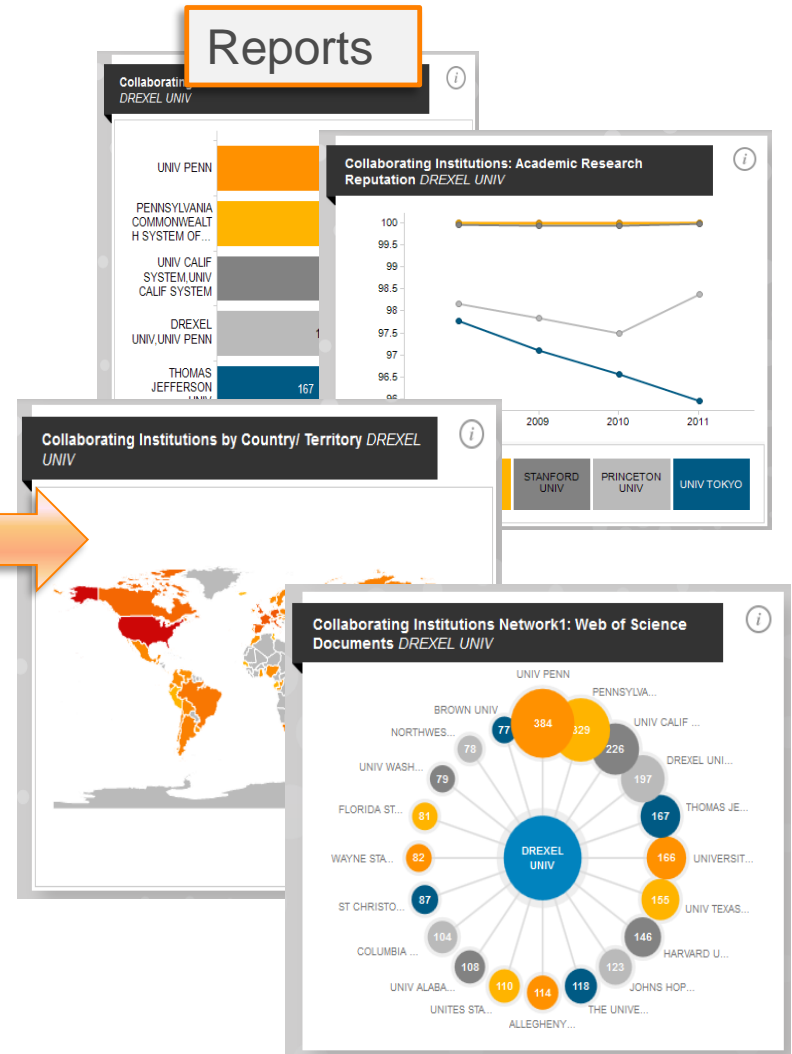
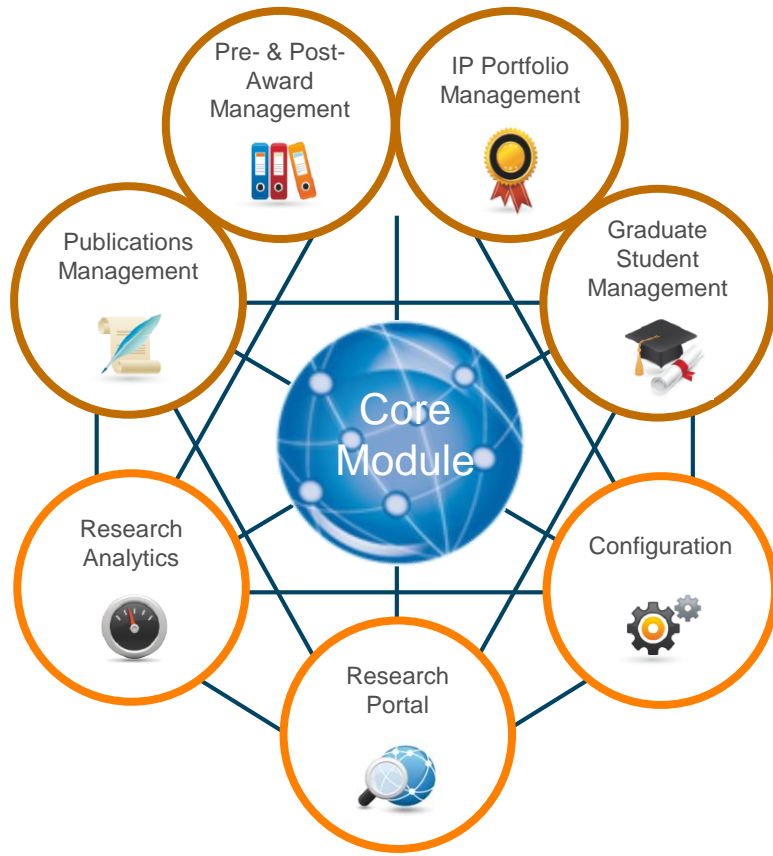
[View All News Articles](#)

Things to do

Publications for completion	366
Further information for application	380
Patents for completion	440
Popjects for completion	480
Ethic reviews for completion	452

A full research management information system with unique bibliometric analysis capabilities

CONVERIS INFORMATION AND WORKFLOW MANAGEMENT



Thank you!



THOMSON REUTERS