



národní
úložiště
šedé
literatury

Šedá literatura ve VÚGTK

Drozda, Jiří
2012

Dostupný z <http://www.nusl.cz/ntk/nusl-126841>

Dílo je chráněno podle autorského zákona č. 121/2000 Sb.

Tento dokument byl stažen z Národního úložiště šedé literatury (NUŠL).

Datum stažení: 08.08.2024

Další dokumenty můžete najít prostřednictvím vyhledávacího rozhraní [nusl.cz](http://www.nusl.cz) .



Research Institute of Geodesy, Topography and Cartography

5. year of the seminars on Providing Access to Grey Literature 2012

Grey Literature in VÚGTK

Ing. Jiří Drozda





Research Institute of Geodesy, Topography and Cartography

Provide research and development in the field of surveying and the cadastre, development and testing of new techniques, procedures and software and expertise in the following areas:

- Geodesy and a geodynamics,
- Global navigation systems service GPS (IGS),
- Building geodesy,
- The creation and maintenance of the Czech cadastre,
- Research and development of the surveying information system and cadastre as a source of information for the registry of State information systems,
- Activity in the State standardization and Metrology in surveying and the cadastre,
- Authorized metrological centre
- Branch Information Centre and Surveying library.



Research Institute of Geodesy, Topography and Cartography

Why **NUŠL** (National Repository of Grey Literature) ?

- Obligation to publish the documents,
 - Act No. 341/2005 Coll., on public research institutions
 - Act No. 106/1999 Coll., on free access to information
 - Act No. 137/2006 Coll., on public procurement
- Participation in the projects and international organizations
 - The European Structural Funds
 - Grant Agency of Czech Republic, Technology Agency of Czech Republic , Ministry of the Interior, the Ministry of culture,
 - CLGE, ICA, FIG, EuroGraphic, FIABCI, ISPR
- Promotion of research, doctoral candidates and young scientists
 - Citations, lecture activities, publications, preprints
- Prof. PhDr. František NUŠL
 - The first Director of the Astronomical Institute Ondřejov
 - Mercury circumzenital for determining of latitude



Research Institute of Geodesy, Topography and Cartography

The current status

- Publication on Web pages
 - www.vugtk.cz
 - Non-system saving of all documents
 - The impossibility of searching
 - Difficult publications of documents
 - Multiply storage of documents

The screenshot displays the website interface for the Research Institute of Geodesy, Topography and Cartography (VÚGTK). The main header reads "VÝZKUMNÝ ÚSTAV GEODETIČKÝ, TOPOGRAFICKÝ A KARTOGRAFICKÝ, v. v. i." with contact information: Ústecská 96, 250 66 Zábřeh, tel.: 284 890 351, fax: 284 890 056. The navigation menu on the left includes items like "Základní informace o VÚGTK", "Produkty a služby", "Katalog knihovny", and "Výběrová řízení" (highlighted with a red circle). The main content area features a search bar, a "Rozšířené hledání" button, and a list of publications. A red circle highlights the "VÝZKUMNÝ ÚSTAV GEODETIČKÝ, TOPOGRAFICKÝ A KARTOGRAFICKÝ, v. v. i." header in the content area. The footer contains copyright information: © VÚGTK 1997 - 2010 and contact details for the website.



Research Institute of Geodesy, Topography and Cartography

The publication of gray literature (NUŠL) versus local repository

- Gray literature publication
 - Annual reports, Projects final reports,
 - Professional articles and monographs,
- Preservation and archiving of internal documents
 - Meetings and negotiations records,
 - Executive and Scientific Council's documents,
 - Project documentations,
- Presentations, advertising and promotional materials
 - Presentations, videos, and photo-documentation,
 - Promotional and advertising materials,
 - Materials of professional events,
- Scientific data and observation data



Research Institute of Geodesy, Topography and Cartography

Local repository

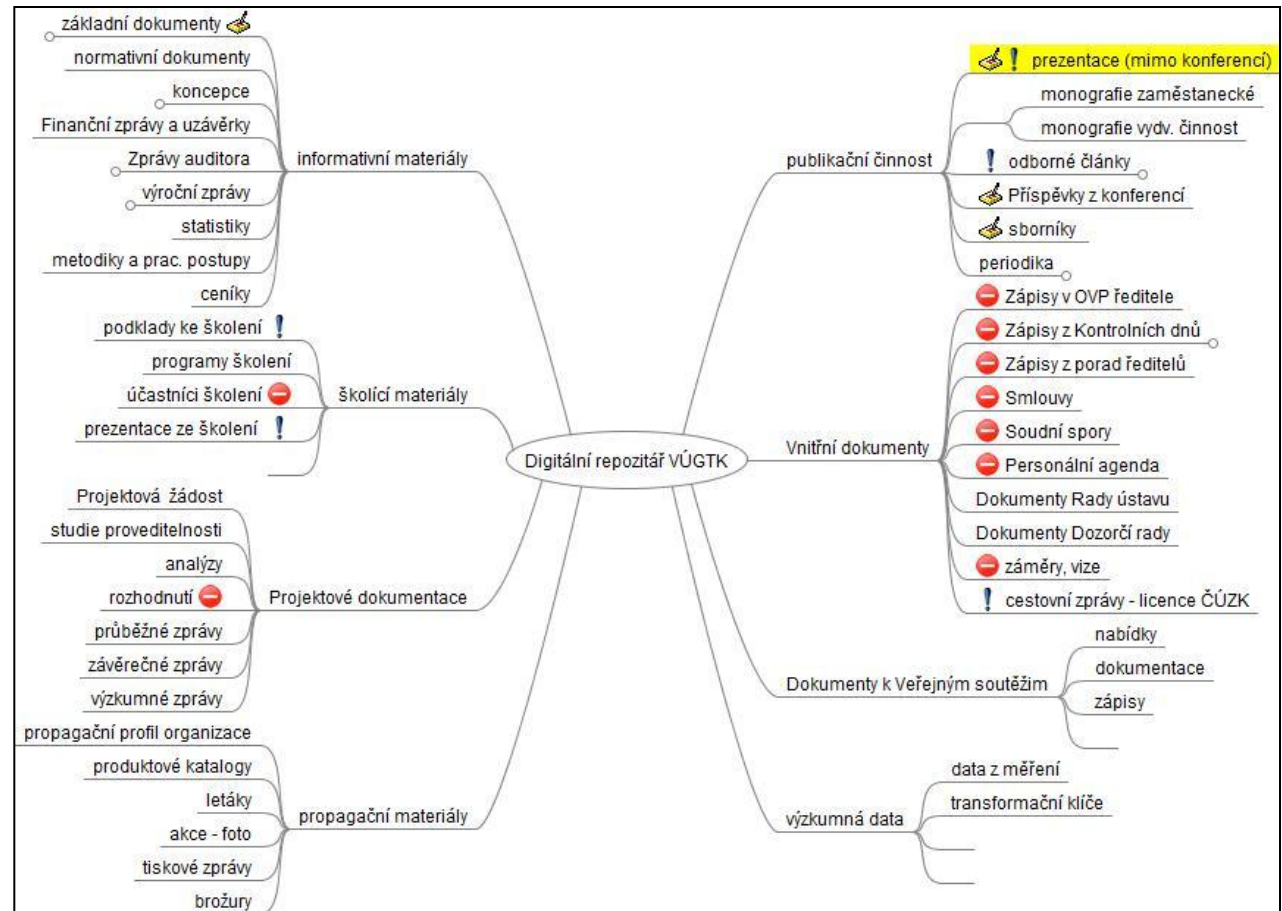
- Storage system of internal documents
 - Significant growth of the scope and quantity of documents (Moor law)
 - Documents searching
 - Multiple storage of the same document
- Publications and management of flow of internal documents
 - Categorize of documents (document type)
 - Publication of internal documents
 - Document archiving system

The transition from a focus on digital documents to the recognition of the importance of metadata



Research Institute of Geodesy, Topography and Cartography

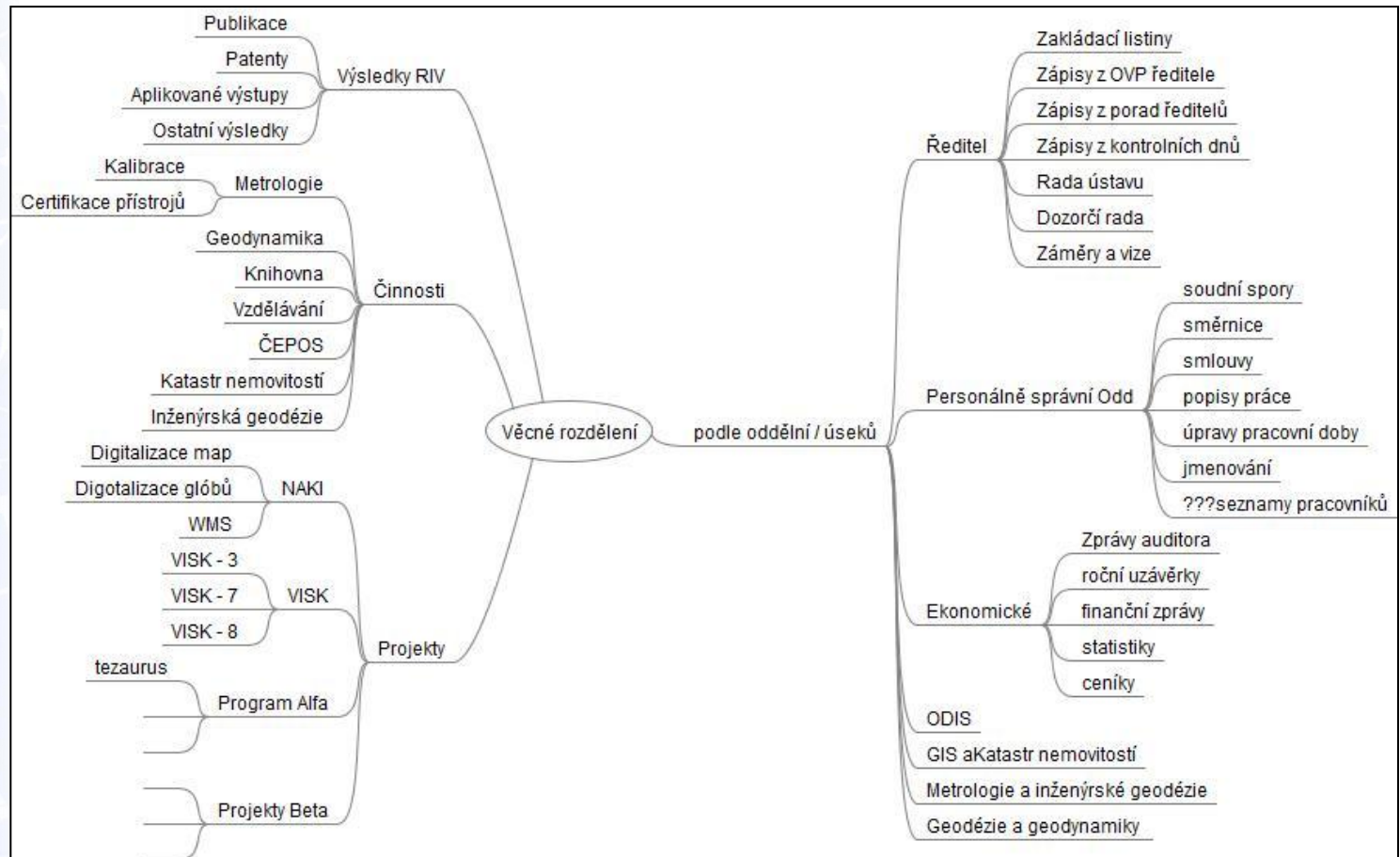
Design of structure of repositories (document's typology)





Research Institute of Geodesy, Topography and Cartography

The horizontal breakdown of documents — the general division





Research Institute of Geodesy, Topography and Cartography

What should and what should not be in the repository

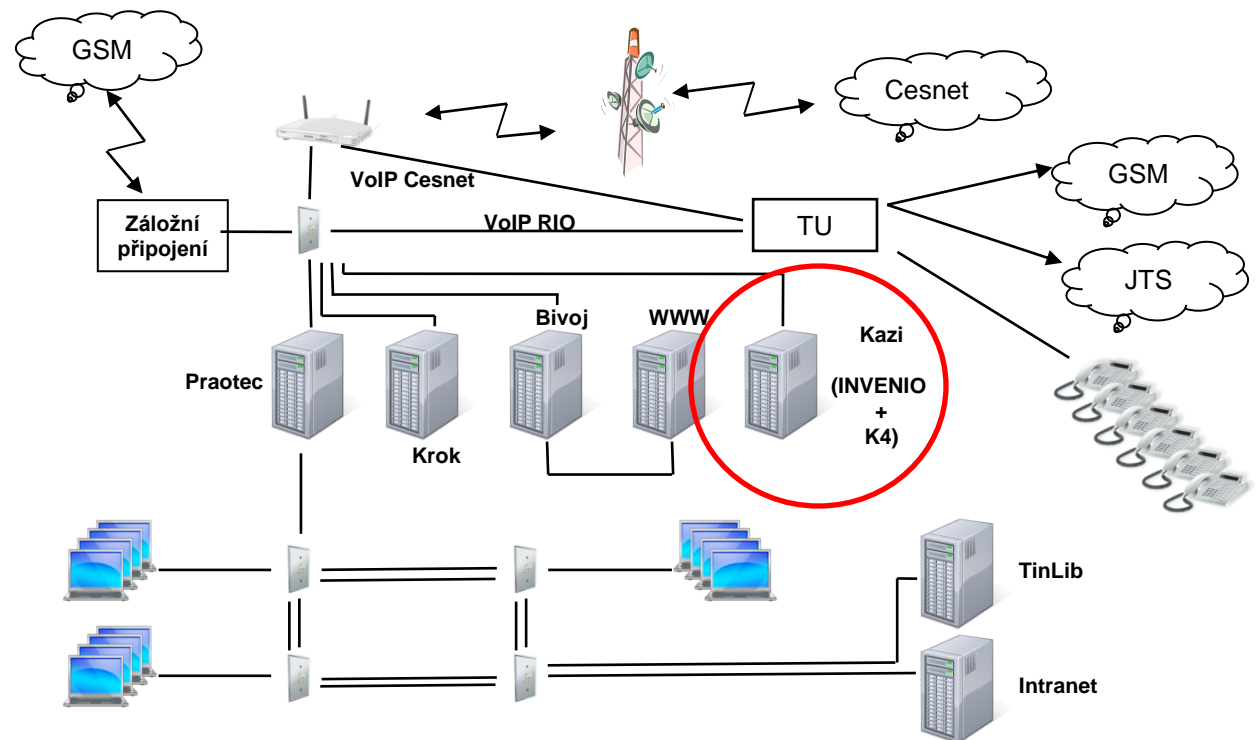
- Foundation Character, Trade Certificate, internal normative documents
- Annual reports, project reports, audit reports
- Contracts, licenses, certification and accreditation
- The concept of development, long-term business plans
- Professional publications and monographs, preprints, conference contributions
- Meeting and negotiations records, travel reports
- Promotional materials, training materials,

- **Laws, decrees and other legislation (*freely available on the intranet*)**
- **Personal documentation (*contracts of employment, level acreage*)**
- **Lists of workers and/or materials, phone books,...**
- **Internal company correspondence**
- **Accounting documents (*invoice, ...*)**

The institutional repository is NOT a information system !!!

The technical solution

- HW - Server HP ProLiant DL180G6, 2G
- OS - Linux Ubuntu 12.04
- SW - CDS - Invenio
- Internal versus external IP address





Research Institute of Geodesy, Topography and Cartography

The willingness to publish documents

- Fear of "copying the idea"
- The publication will be "some extra work"
- Increase the publicity and visibility of the institute, teams and individual researchers too
- The introduction of the system into the handling of documents

The ability to publish documents

- The need for staff training
- Ensuring access and service from other remote laboratories
- Create a simple "input" templates
- Explain the importance and the need for metadata



Research Institute of Geodesy, Topography and Cartography

The right to publish documents

- The license conditions
 - employee work (license)
 - research based on contract
 - conditions for publication of the results of research in the international projects
 - publishing copyright
- Personal data protection (Law No. 101/2000 Coll., on protection of personal data)
- Protection of industrial designs and solutions
- The protection of classified information (Act No. 412/2005 Coll., on the protection of classified information, and security eligibility)

- **Internal documents**



Research Institute of Geodesy, Topography and Cartography

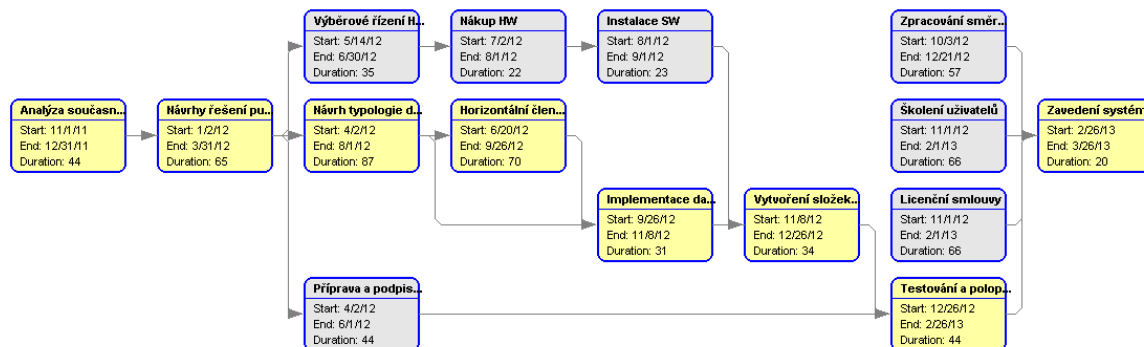
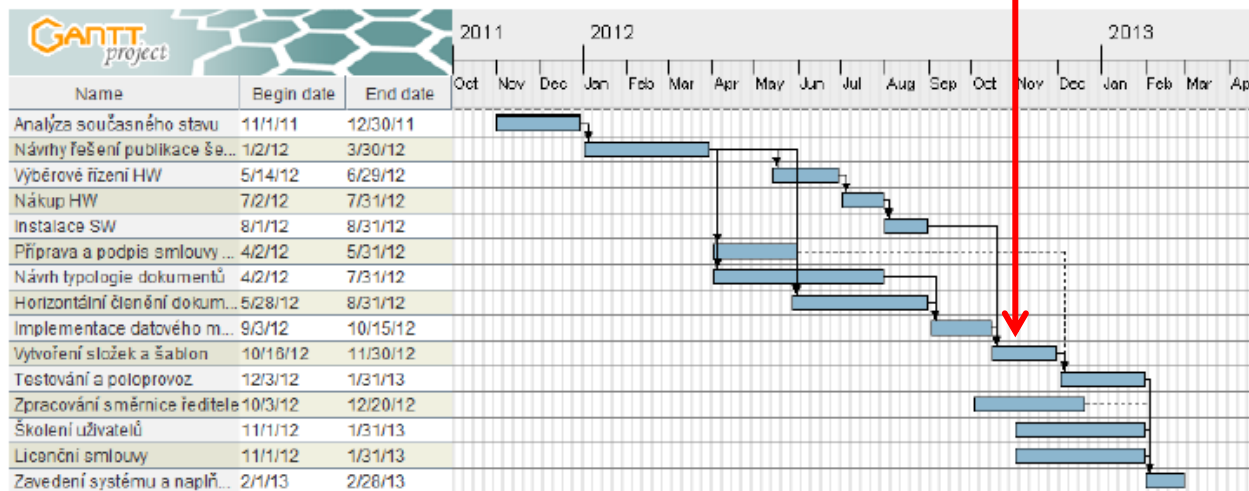
What we had to do for it (and we have still to do)

- ☑ **Decision to install institutional repository and NUSL in VÚGTK**
- ☑ **Signature of the Treaty for access to gray literature**
- ☑ **Design of structures (typology) deposit of the documents**
- ☑ **Technical (HW and SW) solutions**
- ❖ Implementation of the data model
- ❖ Creation of search folders and template storage
- Testing / pilot plant
- Setting the publication rules and data harvesting
- ❖ Directive of the Director for the preservation and archiving of documents
- User training
- Settle of the license matters
- The introduction of the system and data implementation



Research Institute of Geodesy, Topography and Cartography

NUŠL Seminar





Research Institute of Geodesy, Topography and Cartography

What must the institutional repository meet!

- Safely store and publish grey literature in compliance with standards for data exchange so that it can be further disseminated through national and international bases.

What we expect from the institutional repositories?

- Introduction of the system into the preservation and archiving of documents
- In the future, as well as effective and easier access to all archived documents

- In the framework of applied research project VUGTK with partners submitted proposal "Methodology and techniques for the identification and conservation of the Czech research results"



Research Institute of Geodesy, Topography and Cartography

Thank you for your attention

Ing. Jiří Drozda

Branch Information Centre and Surveying library

Research Institute of Geodesy, Topography and Cartography

Ústecká 98

250 66 ZDIBY

jiri.drozda@vugtk.cz

www.vugtk.cz

Tel.: +420 720 255 579, +420 226 802 349