



národní
úložiště
šedé
literatury

Macroeconomic adjustment to monetary union

Fagan, Gabriel; Gaspar, Vitor
2008

Dostupný z <http://www.nusl.cz/ntk/nusl-124007>

Dílo je chráněno podle autorského zákona č. 121/2000 Sb.

Tento dokument byl stažen z Národního úložiště šedé literatury (NUŠL).

Datum stažení: 17.04.2024

Další dokumenty můžete najít prostřednictvím vyhledávacího rozhraní nusl.cz .

WORKING PAPER SERIES 14

Gabriel Fagan and Vitor Gaspar:
Macroeconomic Adjustment to Monetary Union

8
2008

WORKING PAPER SERIES

Macroeconomic Adjustment to Monetary Union

Gabriel Fagan
Vitor Gaspar

14/2008

CNB WORKING PAPER SERIES

The Working Paper Series of the Czech National Bank (CNB) is intended to disseminate the results of the CNB's research projects as well as the other research activities of both the staff of the CNB and collaborating outside contributor, including invited speakers. The Series aims to present original research contributions relevant to central banks. It is refereed internationally. The referee process is managed by the CNB Research Department. The working papers are circulated to stimulate discussion. The views expressed are those of the authors and do not necessarily reflect the official views of the CNB.

Distributed by the Czech National Bank. Available at <http://www.cnb.cz>.

Reviewed by: Vít Bárta (Czech National Bank)
Kamil Galuščák (Czech National Bank)
Luboš Komárek (Czech National Bank)

Project Coordinator: Juraj Antal

© Czech National Bank, December 2008
Gabriel Fagan, Vitor Gaspar

Macroeconomic Adjustment to Monetary Union

Gabriel Fagan and Vitor Gaspar*

Abstract

The move to monetary union in Europe led to convergence of interest rates among the participating countries. This was associated with notable cross-country differences in the behaviour of key macroeconomic aggregates. Compared to the low interest rate countries, former high interest rate countries experienced a boom in domestic demand, a deterioration of the current account and appreciation of the real exchange rate. This paper documents the key stylised facts of this experience and provides a compact two-country model, based on the Blanchard-Yaari setup, to analyze this phenomenon. This model, though simple, is able to broadly capture the main qualitative features of the adjustment. Using this model, we show that the creation of the monetary union leads to an increase in welfare for all generations in both country groups.

JEL Codes: F36, E21, F32.

Keywords: euro area, interest rate convergence, overlapping generations model.

*Gabriel Fagan, European Central Bank, Kaiserstrasse 29, D-60311 Frankfurt am Main. Email: gabriel.fagan@ecb.int). Vitor Gaspar, European Central Bank and Bureau of European Policy Advisers, European Commission, Rue de la Loi 100, B-1049 Brussels. Email: vitor.gaspar@ec.europa.eu, Bureau of European Policy Advisers, European Commission. The views expressed in this paper are those of the authors and do not necessarily reflect those of the European Central Bank or the European Commission. We thank Marta Abreu, Nuno Alves, Chris Allsopp, Giancarlo Corsetti, Ana Lamo, Andre Sapir and Philippe Weil for helpful comments. Presented at the CNB/CERGE-EI/CSE seminar on 6 May 2008.

Nontechnical Summary

Monetary unification led to convergence of interest rates for the participating countries. Concomitantly, the behaviour of key macroeconomic variables was starkly contrasting across countries. Specifically, it was different between countries with relatively low interest rates prior to monetary union (core countries) and countries with relatively high interest rates (converging countries). Compared to the core countries, the latter group of countries experienced a boom in domestic demand, a deterioration of the current account and real appreciation of their currencies.

To account for these facts we develop a simple (endowment-economy) two-country, two-good (traded and non-traded) dynamic general equilibrium model. The simple model is capable of capturing the salient, qualitative features of macroeconomic adjustment. The driver of adjustment is convergence in interest rates between the core (home) and converging (foreign) countries. Foreign countries experience a sharp increase in household expenditure, accompanied by a current account deficit and the accumulation of a net debtor position with respect to the home country. The initial sharp adjustment is followed by a process of slow adjustment, reflecting the evolution of foreign liabilities/assets. In the model the real exchange rate follows the path of relative aggregate expenditures exactly. Interestingly, the interest rate in the home country, after an initial jump up, declines gradually over time, moving towards the rate of time preference in the home country (and away from that in the foreign country), reflecting a gradual increase of the home country's share in overall wealth.

We show that welfare improves (strictly speaking, does not decline) for all current and future generations in both the home and foreign country. We find that the gains are larger for the foreign country. We also find that the welfare gains increase from one generation to the next.

1. Introduction

The creation of the euro area in 1999, a key landmark in the history of European integration, is likely to have had important effects on the economies of the participating countries.¹ In this paper, we focus on the macroeconomic implications of one crucial aspect of monetary union, namely increased financial integration. The most obvious manifestation of this integration was the convergence of short and long-term interest rates to the relatively low levels prevailing in Germany. Against this background, we address three questions. First, how did the macroeconomic adjustment to monetary union differ between former high-interest rate and low interest rate countries? Second, can we develop a compact general equilibrium model to account for these facts? Third, what are the welfare implications of the creation of the monetary union for the respective countries?

As regards the first question, building on our earlier work, (Fagan and Gaspar (2007)), we try to establish some key stylised facts regarding the macroeconomic effects of interest rate convergence. We compare the behaviour over time of a series of macroeconomic variables for two groups of countries: core countries (characterized by low interest rates before participation in the euro area) and convergence countries (characterized by high interest rates). We use two complementary methods for this purpose: a graphical comparison of cross-country averages and the difference-in-difference estimator. On the basis of this analysis, we show that there were with notable cross-country differences in the behaviour of key macroeconomic aggregates: domestic demand, current account balances and intra-euro area real exchange rates. Compared to the core countries, the converging countries experienced a boom in domestic demand, a deterioration of the current account and appreciation of the real exchange rate. An important feature, which has a major influence on our modelling approach, is that the convergence of interest rates was not associated with significant changes in output growth differentials.

Second, we develop a compact two-country dynamic general equilibrium model with a view to matching these facts². We focus on an endowment economy setup with two goods (traded and non-traded). The impulse we consider involves the creation of a monetary union and resulting financial integration of two (groups of) countries which were previously characterised by different levels of domestic interest rates. In our setup, as explained below, the initial difference in interest rates will be assumed to reflect fundamental differences between the two economies, specifically differences in the rate of time preference. After the monetary union, a single interest rate (which may vary over time) exists in the two countries. We then use our model to examine the macroeconomic effects of interest rate convergence. We will argue that such a simple framework is capable of capturing most salient, qualitative features of adjustment mentioned in the previous paragraph.

¹ Participation in the monetary union is expected to affect trade and financial integration, business cycle synchronization and the patterns of specialization. It could also affect institutions, and the structure and behavior of product and labor markets (see Lane (2006) and Mongelli and Vega (2006) for comprehensive surveys of the relevant issues and available evidence).

² In earlier papers (Fagan and Gaspar (2005) and Fagan and Gaspar (2007)), we developed models to analyse the effects of interest rate convergence from the perspective of a small open economy entering the monetary union and experiencing an exogenous permanent fall in interest rates. This approach suffers from a very important limitation: it assumes that the former high-interest rate countries can be characterised as small open economies within the euro area. This assumption is strongly counterfactual. In fact, the converging countries account for some 37% of euro area GDP. Hence, it is clear that significant feedback effects cannot be excluded *a priori*. Moreover, the adjustment in the countries that previously enjoyed low interest rates is interesting as well.

Third, using the model developed in this paper, we derive the welfare implications of the creation of the monetary union. We show that the creation of the monetary union is Pareto improving: all generations in both countries experience a gain in welfare. This reflects the fact that the monetary union represents an expansion of the opportunity sets of all agents in the model. Using a calibrated version of the model, we find that the gains in welfare are greater for later generations and for agents in the former higher interest rate countries.

The paper is organised as follows. In Section 2, we review some stylised facts in order to motivate our analysis. In Section 3, we present our model. Sections 4 and 5 present analytical results for the model in the cases of financial autarky and monetary union respectively. Section 6 presents the results of numerical simulations of the model. In Section 7, we explore the welfare implications of the creation of the monetary union. Section 8 concludes.

The paper is organized as follows. In Section 2, we review some stylized facts in order to motivate our analysis. In Section 3, we present our model. Sections 4 and 5 present analytical results for the model in the case respectively of financial autarky and monetary union. Section 6 presents the results of numerical simulations of the model. In Section 7, we explore the welfare implications of the creation of the monetary union while Section 8 concludes.

2. Stylised facts

The establishment of the monetary union in Europe in 1999 was preceded by a process of nominal convergence among the participating countries. In 1996, for example, nominal long term interest rates ranged from a high of 14.5 percent in Greece to 4.5 percent in Germany. Currently the spread between the highest and lowest government bond yields is of the order of 30 basis points. Similarly, the highest-lowest spread in short-term interest rates amounted to 10.5 percentage points in 1996. Currently, this spread is effectively zero, reflecting the complete integration of money markets in the euro area. Of course, a significant component of the convergence in nominal interest rates across countries reflected a convergence of expected inflation. Still, the evidence shows that real interest rates were also significantly affected (see Charts 1 to 3). Broadly speaking it may be said that monetary unification was associated with convergence of financial conditions across member states.

What were the economic effects of the decline in interest rates differentials (or of the convergence of financial conditions) on the relative behaviour of the countries concerned? Clearly there are too many factors, some country-specific, varying over time to be able to conclude much from individual country data unless a detailed modelling structure is employed³. Key macroeconomic variables in each of the countries were affected by a host of specific shocks, including common shocks emanating from the global environment (e.g. changes in world demand, world interest rates and oil prices) as well as country-specific shocks. A more promising approach is to look at differentials in the behaviour of variables across countries over time. However, differentials across country pairs would still be affected by country-specific shocks, so it is difficult to identify the effect of the shock in this manner. However, taking (simple) averages of the country pairs should reduce the importance of country-specific factors and offers some chance of highlighting the common adjustment mechanism. Following our earlier work

³ Using a DSGE model, Langedijk and Roeger (2007) examine the experience of 6 euro area countries - Germany, Ireland, Italy, Spain, Portugal and the Netherlands - in the early years of EMU. They find that a large part of the divergence between these countries can be explained by the one-off effects of EMU entry, particularly increased financial integration and interest rate convergence.

(Fagan and Gaspar (2007)) we start by separating the euro area countries into two groups on the basis of the relative nominal and real interest rates prevailing in the mid 1990s. The first group comprises low interest rate countries Germany, Belgium, France, the Netherlands and Austria⁴. In common with the usual parlance, we denote this group as the core countries. The second group comprises countries which, initially, had relatively high interest rates: Spain, Ireland, Italy and Portugal⁵. We call this group the converging countries. We calculate, for each economic variable, a pair of time series based on arithmetic (equally weighted) averages within the groups. Then, with a view to controlling for the possible effects of common shocks across all countries, we compare the differences across these averaged country groups. We display the results graphically.

We complement this graphical approach with a more rigorous method. Specifically, we employ a difference-in-difference estimator. This method is often used to study the impacts of one-off events, such as a medical treatments or the effects of specific policies, such as training programmes (Ashenfelter (1978)) or minimum wages (Card and Krueger (1994)).

The idea is that we have data on two periods (the pre-EMU and the post-EMU periods) for two groups of countries (the converging and the core group). By comparing the change in the difference between the two groups of countries over the two periods one may derive an estimate of the differential effect of participation in the euro area on the two country groups. The null hypothesis in this approach is that in the absence of the financial integration shock, the key macro variables in both groups would have followed identical trends. In our context, the difference-in-difference estimate of the differential effect of interest rate convergence is obtained from the following regression on annual data over the period 1995 to 2005:

$$y_{i,t} = \alpha_0 + \alpha_1 D_t + \alpha_2 G_i + \alpha_3 D_t * G_i$$

Here y_{it} denotes an observation on the value of a variable of interest in country i in period t (e.g. the current account-GDP ratio of Germany in 1997). D_t is a dummy variable taking on a value of 1 for the EMU period ($t > 1998$) and 0 for the pre-EMU period. G_i is a dummy variable taking on a value of 1 if the country i is a member of the converging group and zero for the core group. If entry into the euro area was not associated with difference in the behaviour of the macroeconomic variables in the two country groups, then we would expect the coefficient α_3 to be not significantly different from zero. An estimate of α_3 significantly different from zero is consistent with interest rate convergence being associated with differential behaviour across the country groups. Estimates of α_3 for a number of key macroeconomic variables and their associated t-ratios are presented in Table 1.

Clearly the sample size in this exercise is small, so the usual caveats apply both to the graphical and to the difference-in-difference estimates. Nonetheless, we believe that taking this perspective on the data does yield some useful insights into the macroeconomic effects of the interest rate convergence process.

⁴ We do not include Luxembourg in our analysis due to difficulties with data availability.

⁵ We do not include Greece in this latter group since it entered the euro area only in 2001, some two years later than the other countries. We have replicated the analysis including Greece in the converging group. We find that the conclusions derived in this section are not sensitive to the exclusion of Greece. Details are available on request from the authors. In addition, we do not include Finland in either group. This reflects the fact that it only joined the EU in 1994 and the evolution of its economy over part of the period under review is heavily distorted by special factors (such as the recovery from the sharp recession recorded in the early 1990s).

Details on the sources of the data used in the analysis are presented in Appendix I.

We focus on five key stylised facts which result from this analysis.⁶

As is clear from inspection of Charts 1 to 3 and also from the first three rows of Table 1 nominal and real interest rates declined in converging countries relative to core countries.

We may summarize these remarks as our first stylized fact (see Charts 1,2, and 3):

(1) There was a sizeable convergence of interest rates between the two groups of countries.

We will take interest rate convergence as the impulse triggering subsequent adjustment.

Turning to output, over the whole period, GDP growth was around 1 percentage point higher in the converging countries than in the core group. However, growth differentials tended to narrow to levels which were low by historical standards. On the surface, this evidence suggests that the process of interest rate convergence has had little impact on output growth differentials (Chart 4). This result is confirmed by the difference-in-difference analysis: the estimated coefficient has a negative sign and it is insignificant. The result is also confirmed by a number of studies of growth differentials in the euro area (see, for example, Benalal et al. (2006) and ECB (2007) for a review of the evidence on output growth differentials within the euro area). In any case, the absence of statistically significant effects on overall growth differentials suggests that it is justifiable to look at intertemporal adjustment patterns in endowment economy models. It is interesting to note en passant that the differential impact of euro area participation, across the two groups of countries, is significant for housing investment, while for non-housing investment it is not (Table 1). We thus have our second stylized fact:

(2) There is no evidence of significant effects on GDP growth differentials.

There is a substantial difference in the behaviour of household expenditure across the two groups of countries. Compared to the core countries, the household savings ratio fell more rapidly in the converging countries (Chart 5), although this effect is not significant. In addition, housing investment (as a percentage of GDP) rose in the converging countries while falling in the core countries (Chart 6), and this difference is found to be statistically significant. This differential pattern in household expenditures is clearly reflected in a different pattern in household net lending, which declined sharply in the converging countries compared to the core countries (Chart 7), a phenomenon also found to be statistically significant. From Chart 8 it is also apparent that the household debt ratio of converging countries increased rapidly, approaching the levels prevailing in the core countries. Household debt also increased in the latter group of countries, albeit at a much slower pace.

(3) Household expenditures behaved very differently in the two groups of countries. In relative terms, converging countries experienced a boom in expenditures leading to a decline in their net lending, and a more rapid buildup in debt, relative to the core countries.

⁶ The choice of these facts reflects our earlier work (Fagan and Gaspar (2007)). In that paper, we documented a number of additional facts not discussed here. In particular, we found that while there were differences in non-housing investment across the two country groups, these were not as prominent in the case of housing investment and consumption. Second, on average there was little difference in the paths of the fiscal deficits between the two country groups.

Given the sharp increase in private domestic expenditure in converging countries, relative to historical trends and the muted response of output it is not surprising that a visible change occurred in the external balances of these countries. As can be seen in Chart 10 net foreign assets in the core countries exhibited a mild upward trend over the period, consistent with the moderate increase in their current account surplus shown in Chart 9. In contrast the current account of converging countries moved towards a significant deficit. Such trend, in turn, led to the accumulation of a significant foreign debtor position (Chart 6). This evidence is consistent with the work of Blanchard and Giavazzi (2002), who also found that the increased financial integration in Europe, including the creation of the euro area, was associated with increasing dispersion of current account balances. The visual impression is confirmed by the difference-in-differences estimator (Table 1), allowing us to conclude that:

(4) Current accounts balances behaved very differently across the two country groups, with the core countries experiencing a broadly stable position over the period while the convergence countries experienced a sharp deterioration. This led to divergent patterns in the accumulation of net foreign assets.

Chart 12 shows clear relative consumer price convergence of converging countries towards levels prevailing in core countries. Again, the difference in difference estimates confirm that the real appreciation (measured by relative consumer prices) is significant (Table 1):

(5) Converging countries recorded real appreciation vis-a-vis the core group as captured, for example, by the relative behaviour of consumer prices.

From this brief review of the stylised facts four striking features emerge regarding the different behaviour of the two groups of countries following the creation of the monetary union. First, contrary to what one might expect, there appears to have been little noticeable or statistically significant effect on output growth differentials (or non-housing investment). Second, the pattern of household spending and lending is strikingly different across the two groups of countries, with converging countries experiencing a strong boom in domestic expenditures (and household indebtedness) compared to the core group. Third, reflecting the previous two facts, the current account balances and accumulation of net foreign assets behaved very differently, with the converging countries experiencing a marked deterioration in their current account balances compared to a broadly stable situation in the core group. Fourth, the behaviour of intra-euro area real exchange rates is striking, with the converging countries experiencing a notable real exchange rate appreciation vis-?-vis the core group.

Is it possible to explain these facts regarding the different behaviour between the two groups using a two-country intertemporal general equilibrium model? And what are the welfare implications for the respective countries. In the remainder of the paper we address both of these questions.

3. The two-country general equilibrium model

We model the macroeconomic effects of financial integration using a two-country, two-good endowment economy model with household sectors modelled along the lines of Blanchard (1985) and Yaari (1965). Our choice of this framework reflects our reading of the stylised facts given above.

First, up to now output growth differentials do not appear to be a major part of the story of adjustment to the euro. Thus the use of an endowment setup, which obviously has the advantage of simplicity, can be justified. The analysis we perform for the endowment economy with non-traded goods is very much in the spirit of Obstfeld and Rogoff (2004). They also use an endowment economy framework, with traded and non-traded goods to discuss the real exchange rate implications of changing global expenditure patterns.

Second, movements in real exchange rates appear to have been an important feature of the adjustment. To tackle this issue, clearly we need a framework with (at least) two sectors.

Third, within our framework, we assume that the pre-integration difference in interest rates is due to differences in the rates of time preference across countries. This latter assumption contrasts with the main alternative approach to modelling the macroeconomic effects of financial integration, such as that employed by Gourinchas and Jeanne (2006). In that approach it is assumed that pre-integration interest rate differentials reflect differences in initial capital-output ratios and thus the process of financial integration leads to a flow of capital into the higher interest rate country which leads to an equalisation of capital-output ratios and interest rates across countries. Our approach of assuming differences in the rate of time preference across countries is motivated by three considerations. First, it is of itself interesting to examine what happens when countries characterised by a deep structural difference such as differences in the rate of time preference experience financial integration. Second, the stylised fact that the creation of the monetary union has not been associated with changes in growth differentials suggests that flows of capital and resulting changes in capital-output ratios have not been, to date, a major part of the story as far as the euro area is concerned. Third, this assumption can be seen as a simplification, which we view as proxying for a range of factors - e.g. differences in credit frictions and difference in policy credibility - which account for the initial difference in interest rates observed in the data⁷.

Finally, the choice of a Blanchard-Yaari setup guarantees a well defined steady state for a financially integrated economy in the face of differences in the rate of time preference.

We consider the creation of a monetary union between two (groups of) countries which, prior to the creation of the monetary union, experienced different levels of nominal and real interest rates. The first group, which we will henceforth call the home country (corresponding to the core group in the previous section), comprises the countries which, prior to the creation of the monetary union, experienced relatively low interest rates. The second group, which we will call the foreign country, consists of the former high interest rate countries. We do not consider production, so we focus on an endowment economy setting. We use the H-superscript to denote home country variables and the F-superscript for foreign variables. Consumers in the home country receive a flow endowment of a tradeable good, ω^H , and a nontradeable good, η^H . Similarly, in the foreign country the consumers receive ω^F and η^F . The size of endowments are constant across time but may differ across countries, reflecting differences in country size. Both countries contain a set of Blanchard-Yaari consumers. We will assume that the death rate ρ is common across countries. We further assume that the population is constant across time, and for convenience, normalised to unity in both countries, and hence the birth rate is equal to the death rate. Reflecting the data for the euro area, we allow the economies to differ in

⁷ In the context of our model, it also allows us to match two facts which are observed in the data for the euro area countries before the start of the monetary union: 1) real interest rates differed across countries and 2) net foreign assets were close to zero.

size, reflected in differences in the size of the endowments across countries. However, in the interest of simplicity, we assume that, apart from the rate of time preference, all of the remaining parameters are the same across countries.

To examine the impact of monetary union, we follow Gourinchas and Jeanne (2006). In assuming that, initially, the countries are financially autarkic, neither lending or borrowing to each other. In our setting initial steady state interest rates differ across the two countries reflecting different rates of time preference. The creation of a monetary union brings this autarkic situation to an end and the associated financial integration means that a single common interest rate prevails in the two countries from the moment of its inception⁸. This single interest rate will be an endogenous variable to be determined along with foreign assets/liabilities and consumption paths in both countries. As we will see below, the creation of a monetary union leads to a new steady-state interest rate and NFA position, but also to interesting transitional dynamics.

3.1 A representative household intertemporal problem

We start by writing down the problem of a representative household of cohort t in either of the countries. Since the problem is symmetric in the home and foreign country, we do not need to employ H and F superscripts. As in all standard applications of theory, households will maximize their expected utility. In our setting, with two goods and logarithmic preferences, the household will maximize the present, expected discounted value of utility, which may be written as:

$$\max_{c_t^T, c_t^N} E_t \left[\int_t^\infty \log(c_s) \exp(-\theta(s-t)) ds \right]$$

with c_s being given by a Cobb-Douglas composite of traded and non-traded goods:

$$c_s = \kappa (c_s^T)^\alpha (c_s^N)^{1-\alpha}$$

where t and s denote time, c_t^T and c_t^N denote respectively the consumption of traded and non-traded goods, θ is the subjective discount factor while κ is a parameter used for normalisation purposes. Since, in the model, the only uncertainty pertains to the timing of death the objective of the household may be written more simply, using our demographic assumptions to calculate expected values, as:

$$\max_{c_t^T, c_t^N} \int_t^\infty \log(c_s) \exp(-(\theta + \rho)(s-t)) ds.$$

⁸ In simulating the model, the creation of the monetary union is modelled as an unanticipated shock. While this is obviously a simplification, it is worth noting that the interest rate convergence which occurred in Europe happened rather quickly. Moreover, contemporary calculations based on bond yields indicate that, as late as 1996, markets assessed the probability of some converging countries entering the monetary union in 1999 as being below 50% (see, for example, Bates (1999) and Favero et al. (2000)).

Each household faces a budget constraint, which we may write in the form of accumulation of assets or, if negative, debts. Specifically:

$$\frac{df_t}{dt} = (r_t + \rho)f_t + p_t^T(\omega - c_t^T) + p_t^N(\eta - c_t^N).$$

ω and η denote the flow endowments of traded and nontraded goods, respectively. The budget equation is intuitive. The individual household accumulates assets in accordance with (i) the private rate of return on past assets, given by the sum of the interest rate with the compensation for the probability of death; and (ii) the difference between the value of its endowment flows and consumption expenditure. Note that in this setting the interest rate faced by the household can vary over time.

In what follows we will let p^T be the numeraire and set it to 1. Letting z_t denote nominal consumption, i.e. $z_t = c_t^T + p_t^N c_t^N$, we can express the standard intratemporal first order conditions for c_t^T and c_t^N as:

$$c_t^T = \alpha z_t \tag{3.1}$$

and

$$p_t^N c_t^N = (1 - \alpha) z_t \tag{3.2}$$

These expressions enable us to define a dual price index for aggregate consumption, p_t^9 so that $z_t = p_t c_t$. The budget constraint then becomes:

$$\frac{df_t}{dt} = (r_t + \rho)f_t + \omega + p_t^N \eta - z_t$$

Applying the maximum principle to solve the consumer's optimisation problem, we obtain the following Euler equation for nominal consumer expenditure:

$$\dot{z}_t = (r_t - \theta) z_t \tag{3.3}$$

Solving this Euler equation subject to the budget constraint gives the following "solved out" consumption function:

$$z_t = (\theta + \rho) (f_t + x_t)$$

where x_t is given by:

$$x_t = \int_t^\infty e^{-(\bar{r}(s,t) + \rho)(s-t)} (\omega + p_{t+s}^N \eta) ds.$$

⁹ The formula for the dual price index is $p_t = \left(\frac{1}{\kappa}\right) (\alpha^{-\alpha} (1 - \alpha)^{-(1-\alpha)}) p_t^\alpha p_n^{(1-\alpha)}$

Here $\bar{r}(s, t)$ denotes the average interest rate between periods t and s (see, for example, Barro and Sala-I-Martin (2003)). The consumption function tells us that current nominal consumption is a function of the discounted nominal value of lifetime resources, where the discounting takes place with respect to the sum of the nominal interest rate and the death rate. Given our demographic assumptions, the consumption function and asset accumulation equation can be aggregated across consumers. The aggregate consumption function is:

$$Z_t = (\theta + \rho)(F_t + X_t)$$

with

$$X_t = \int_t^\infty e^{-(\bar{r}(s,t)+\rho)(s-t)} (\omega + p_{t+s}^N \eta) ds.$$

The corresponding equation of motion for the aggregate foreign asset position is:

$$\frac{dF_t}{dt} = r_t F_t + \omega - \alpha Z_t$$

In deriving the latter equation we have used the first order intratemporal condition for nontraded goods together with the market clearing condition for nontraded goods: $C_t^N = \eta$. Note that in our setup, an endowment economy without capital and storage possibilities, economywide assets are the assets-liabilities with respect to the rest of the world. Note also, that the death rate does not appear in the aggregate asset accumulation equation. In addition, from the intratemporal first order condition for nontraded goods (3.2), we can show that the nontraded price is a linear function of aggregate nominal consumption:

$$p_t^N = \frac{(1 - \alpha)Z_t}{\eta} \quad (3.4)$$

Substituting this expression into the formula for the dual price index and noting that the price of traded goods is normalised to unity, we can show that the consumer price index is a monotonically increasing function of nominal expenditure:

$$P_t = \left(\frac{1}{\kappa}\right) (\alpha^{-\alpha}(1 - \alpha)^{-(1-\alpha)}) \left(\frac{(1 - \alpha)Z_t}{\eta}\right)^{1-\alpha} \quad (3.5)$$

Finally, noting that nominal consumption is given by $Z_t = P_t C_t$, we can also show that real consumption is a monotonically increasing function of total nominal expenditure.

$$C_t = \kappa (\alpha^\alpha (1 - \alpha)^{(1-\alpha)}) \left(\frac{(1 - \alpha)}{\eta}\right)^{\alpha-1} Z_t^\alpha \quad (3.6)$$

3.2 The dynamics of the aggregate economy

As noted above, the optimisation problems faced by consumers in the home and foreign countries are symmetric, so we can use the results derived in the previous section to describe the equations of motion for the two countries. Let superscript-H denote a variable for the home country and superscript-F the corresponding foreign country variable. Then using our previous results and differentiating with respect to time, we can show that the evolution of the two economies is governed by the following four equations:

$$\dot{Z}_t^H = (r_t - \theta^H)Z_t^H - \rho(\theta^H + \rho)F_t \quad (3.7)$$

$$\dot{Z}_t^F = (r_t - \theta^F)Z_t^F + \rho(\theta^F + \rho)F_t \quad (3.8)$$

$$\dot{F}_t = r_t F_t + \omega^H - \alpha Z_t^H \quad (3.9)$$

$$\alpha Z_t^H + \alpha Z_t^F = \omega^H + \omega^F \quad (3.10)$$

The first three equations are the standard in the open economy Blanchard-Yaari setup (see, for example, Blanchard and Fisher (1989)). The last equation is a condition for equilibrium in the global market for traded goods. It makes use of the intratemporal first order condition for traded goods consumption (3.1) and the normalization of the price of traded goods to unity.

In what follows, we will assume, as noted above, that foreign consumers are more impatient than home consumers. This implies that their rate of time preference is higher: $\theta^F > \theta^H$. We will also use the convention that F_t measures the net foreign assets of the home consumers (a positive value means that they have positive net assets). Of course, with this convention, F_t denotes the net foreign liabilities for the foreigners.

With this apparatus in place, we are now in a position to examine the behaviour of the two economies. We start with an initial condition of financial autarky and then look at what happens following the creation of the monetary union, reflected in the common interest rate across both countries.

4. Financial autarky

Under autarky, $F_t = 0$ for all t , i.e. no international borrowing and lending takes place. We see straight away that under these conditions equations (3.7) and (3.8) imply that, in the autarkic steady state:

$$r^H = \theta^H$$

and

$$r^F = \theta^F$$

Thus the interest rates are different across countries, with $r^F > r^H$. Under autarky, the consumers in each country consume their endowments of traded and nontraded goods in each period, foreign lending and borrowing is zero and interest rates differ across countries.

5. Monetary union

Financial integration due to monetary union implies that a common interest rate applies across the area:

$$r_t^H = r_t^F = r_t$$

where r_t is the area-wide interest rate. Note that r_t is now an endogenous variable and that - at least in the transition to the steady state - it will vary over time, hence the t-subscript.

The four equations (3.7) to (3.10) together with the initial condition, $F_0 = 0$ and the transversality conditions determine the time paths of the four endogenous variables $\{Z_t^H, Z_t^F, F_t, r_t\}$.

Differentiating (3.10) with respect to time implies:

$$\dot{Z}_t^H + \dot{Z}_t^F = 0 \quad (5.11)$$

Adding (3.7) to (3.8) and using (5.11), gives us after some rearrangement:

$$r_t = \theta^H \left(\frac{\alpha Z_t^H}{\omega^H + \omega^F} \right) + \theta^F \left(\frac{\alpha Z_t^F}{\omega^H + \omega^F} \right) + \rho(\theta^H - \theta^F) \left(\frac{\alpha F_t}{\omega^H + \omega^F} \right) \quad (5.12)$$

Thus, at every point in time, the (time-varying) interest rate is equal to a weighted average of the rates of time preference at home and abroad, with the weights being given by the respective shares in world consumption of traded goods, plus a term in net foreign assets. It is worthwhile to interpret the result carefully. The interest rate must be compatible with unchanging world consumption of tradable goods. It is useful to start disregarding the last term in the equation. Such a simplification would be exact if net foreign assets were zero, the birth (and death) rate was nil or $\theta^F = \theta^H$. Hence, under such conditions, the interest rate would be a weighted average of the subjective rates, with the weights given by the respective weights of world expenditure (as stated above). However, our simplifying assumptions don't hold true in general. Why does it make a difference? In the Blanchard-Yaari set-up the expenditure profile, over time, is the same for all households. Nevertheless, the aggregate time profile is affected by the arrival of newborns. They affect average expenditure because, by assumption, they are born without assets (or debts). Therefore, they have a lower (higher) expenditure level than the average in the economy. The difference, relative to the respective average, is $-(\theta^H + \rho)F_t$ for the home country newborns and $(\theta^F + \rho)F_t$ for the foreign country newborns, since $(\theta^i + \rho)$, $i = H, F$ is the marginal propensity to consume out of wealth. In both cases their weight in the overall population is given by the birth rate ρ . The impact on expenditure is, thus, $-\rho(\theta^H - \theta^F)\alpha F_t$. Since $\theta^F > \theta^H$ the term within brackets is negative. As F_t increases over time, the equilibrium interest rate becomes lower than the consumption-weighted average of the rates of time preference.

From (5.12) we see straight away that the initial interest rate, r_0 , following the creation of the monetary union, must lie between the interest rates which prevailed in the two countries. We see this by noting that at this point, let us say $t = 0$, we have by assumption $F_0 = 0$. The equation then implies that $\theta^H < r_0 < \theta^F$.

Using (3.10) to eliminate Z_t^F from (5.12) yields:

$$Z_t^H = \left(\frac{1}{\alpha}\right) \left(\frac{r_t - \theta^F}{\theta^H - \theta^F}\right) (\omega^H + \omega^F) - \rho F_t \quad (5.13)$$

The partial derivative of this expression with respect to r is:

$$\frac{dZ^H}{dr_t} = \frac{1}{\alpha(\theta^H - \theta^F)} < 0 \quad (5.14)$$

and, by a similar sequence of steps,

$$Z_t^F = \left(\frac{1}{\alpha}\right) \left(\frac{\theta^H - r_t}{\theta^H - \theta^F}\right) (\omega^H + \omega^F) + \rho F_t \quad (5.15)$$

These equations show us that once we know the paths F and r , we can determine the paths of nominal consumption in both countries. Once we know the paths of Z^H and Z^F we can also derive for each country paths for nontraded goods prices, the consumer price indices and real consumption using the expressions (3.4),(3.5) and (3.6) given earlier.

By a process of repeated substitution in (3.7) to (3.10), we can reduce the model to a pair of (nonlinear) differential equations in F and r .

$$\dot{F}_t = (r_t + \alpha\rho)F_t + \omega^H - \left(\frac{r_t - \theta^F}{\theta^H - \theta^F}\right) (\omega^H + \omega^F) \quad (5.16)$$

$$\dot{r}_t = \frac{\alpha\rho\omega^H(\theta^H - \theta^F)}{(\omega^H + \omega^F)} + (r_t - \theta^H - \alpha\rho)(r_t - \theta^F) - \frac{\alpha(\theta^H - \theta^F)\rho^2(1 - \alpha)}{(\omega^H + \omega^F)} F_t \quad (5.17)$$

F is a predetermined variable while r is a jump variable. The pair of equations can be solved numerically by using standard two-point boundary techniques.

5.1 The steady state of the monetary union

Although our primary interest is in the shorter term dynamic adjustment to the creation of the monetary union, we present in this section the key features of the (post monetary union) steady state. This is given by the fixed point of equations (5.16) and (5.17). Define the weighted average of the rates of time preference (r^{av}) with the weights being given by the relative sizes of the traded endowment bundles as :

$$r^{av} = \frac{\omega^H \theta^H + \omega^F \theta^F}{\omega^H + \omega^F}$$

Now, letting a bar over a variable denote the steady state, we show in Appendix II that:

$$\theta^H < \bar{r} < r^{av} < \theta^F$$

and

$$\bar{F} > 0$$

In words, the steady-state interest rate lies between the interest rates that prevailed in the home and foreign countries prior to the monetary union. In fact the interval is narrower: the steady-state interest rate is lower than an endowment weighted average of the initial interest rates. In addition, the net foreign asset position of the home country is positive, compared with the initial value of zero, implying that it becomes a net creditor. In the appendix, we also establish the following facts about the post monetary union steady state relative to the initial autarkic steady state:

1. both nominal and real consumption in the home country are higher;
2. both nominal and real consumption in the foreign country are lower;
3. the price of nontraded goods in the home country is higher and (since the price of traded goods is the numeraire) the overall consumer price index is higher.
4. the price of nontraded goods in the foreign country is lower as is the consumer price index.

5.2 Transition paths

To explore the dynamics, we linearise (5.16) and (5.17) around the new steady state to obtain:

$$\dot{\tilde{F}}_t = (\bar{r} + \alpha\rho)\tilde{F}_t + \left(\bar{F} - \frac{\omega^H + \omega^F}{\theta^H - \theta^F}\right)\tilde{r}_t \quad (5.18)$$

$$\dot{\tilde{r}}_t = -\left(\frac{\alpha(\theta^H - \theta^F)\rho^2(1 - \alpha)}{\omega^H + \omega^F}\right)\tilde{F}_t + (2\bar{r} - \rho - \theta^H - \theta^F)\tilde{r}_t \quad (5.19)$$

where a bar over a variable denotes the steady-state value while a tilde denotes a deviation from steady state. Saddle path stability requires that this system has one root with positive real parts and one root with negative real parts. This requires that the determinant of the associated matrix is negative. A sufficient condition for this to be the case is that $\bar{r} < \frac{\theta^H + \theta^F + \rho}{2}$, which is likely to be the case in practice. We will assume that this condition is always satisfied for the relevant range of parameters we are interested in (and of course we verify this in numerical implementations). The phase diagram of the system is presented in Figure 1.

We note that the locus $\dot{\tilde{F}} = 0$ is downward sloping in F-r space and it can easily be shown that the saddle path is less steeply sloped¹⁰. The $\dot{\tilde{r}} = 0$ locus is upward sloping and, for reasonable parameter values, almost a vertical line.

Following the creation of the monetary union, the interest rate jumps to a new level lying between the interest rates that prevailed in the two countries prior to the union. Since the level of

¹⁰ Details available from the authors on request.

foreign assets is predetermined, the economy jumps to the point (A) on the saddle path associated with the initial interest rate r_0 .

We can now establish that this initial interest rate is higher than the weighted average rate r^{av} . To see this, note from (5.16), that if r_0 were equal to r^{av} , given the initial value of $F_0 = 0$, then \dot{F} would be zero. This corresponds to point (C) on the phase diagram. At this point, countries would be neither lending to (or borrowing from) each other. Consumption in both countries would be equal to pre-EMU levels, with consumers in each country consuming their endowments. This point cannot be an equilibrium since it does not lie on the saddle path. The equilibrium point on the saddle path (point (A)) lies to the right of it. This gives us one key result for the dynamics. Initially, following the creation of the EMU, the common interest rate lies above the weighted average of the rates of time preference.

Thereafter, foreign assets/debt rise gradually while the interest rate falls as the economy converges to its new steady state (B), characterised by a positive level of foreign assets for the home country and $r < r^{av}$ as described in Section 5.1.

The time paths of the remaining variables can be derived in a straightforward manner. It is easy to establish that nominal consumption in the home country jumps down on impact. To see this, note that (1) at $r_0 = r^{av}$, nominal consumption would equal the pre-EMU level; (2) in fact, as shown above, $r_0 > r^{av}$; and (3) the partial derivative of Z^H with respect to r_t is negative, as shown in (5.14). These three facts imply that the initial level of home consumption following the monetary union is lower than the pre-EMU level. The same applies to real consumption, the nontraded price and the consumer price index since all three of these variables are increasing in Z^H , see (3.4) to (3.6). In particular, there is a decline in the real exchange rate, on impact, in line with the stylized facts reported in Section 2. All of these variables then monotonically increase to new steady state levels, higher than the initial (pre-EMU) steady-state.

The corresponding variables for the foreign country mirror those of the home country but with the opposite sign. Nominal and real consumption in the foreign country jump up on impact and then gradually decline to new, lower, steady-state levels. Prices also move accordingly. In particular, there is an appreciation of the real exchange rate on impact.

With total resources fixed by our endowment assumption, the divergent shifts in domestic demand give rise to movements in the current account balance and set in train an accumulation of foreign assets/liabilities. The home country moves into surplus (and the foreign country into deficit). These current account imbalances are gradually eliminated as the economies converge to the new steady-state foreign asset/debt ratios. At the same time, the divergent movements in prices imply that the foreign country initially experiences a real appreciation before gradually converging to a steady state characterised by a lower real exchange rate.

To summarize, our model predicts the following features following the creation of the monetary union. First, there are divergent movements in nominal and real consumption in the two areas, with the foreign country experiencing an initial boom compared to the home country. Second, this movement in demand leads to the emergence of current account imbalances, with the foreign country experiencing a deficit vis-a-vis the home country. Finally, the foreign country experiences an initial real appreciation vis-a-vis the home country. In qualitative terms, this is fully in line with the stylized facts for the euro area countries outlined in Section 2.

6. A numerical example

In order to further illustrate the workings of the model, we now present the results of a numerical simulation of the model.¹¹ We consider the case of two (groups of) countries: the core (home) and converging (foreign) countries. We calibrate the model as follows. ω^H is set to 0.65, the share of the core countries in euro area GDP while ω^F is set to 0.35. We assume that the share of traded consumption in total consumption (α) is 0.33 in both countries, consistent with available input-output evidence for the euro area. The traded goods price is the numeraire in both countries and is set to unity. We also assume for convenience that the initial nontraded price in both countries is unity. This then gives us implied values for the nontraded goods endowments η^H and η^F . The mortality rate, ρ , is set to 0.02 per annum, corresponding to a life expectancy of 50 years, a standard value in these models. Given our assumption of constant population, the mortality rate is equal to the birth rate. θ^H is set to 0.04 while θ^F is set at 0.05. Initially, under autarky, these parameters imply that the interest rates in the home and foreign country are 4% and 5% respectively. In the initial steady state, consumption in both countries is thus equal to the country-specific endowments.

The response of the variables to the creation of a monetary union is shown in Figures 2 which (except for interest rates, current account balances and net foreign assets) shows the percentage difference from the pre-EMU steady state. On impact, the interest rate jumps to a common level of 4.4%. Real consumption in the core countries jumps down by 2% on impact while consumption in the converging countries jumps up by 4%. These shifts in relative domestic demand are associated with the emergence of current account imbalances with the current account balance of the core countries moving to an initial surplus of 2 percent of GDP (and an associated deficit in the converging countries of 4 percent of GDP - the differences in the numbers reflecting differences in the size of the economies). Thereafter, as the converging countries accumulate foreign debt, their consumption declines gradually to a new level some 15% below the autarkic steady-state value. Correspondingly consumption in the core countries rises to a new steady-state level, higher than the autarkic value. The patterns of relative demand are associated with notable movements in cross-country relative prices. Nontraded prices in the converging countries jump up by 12% while in the home countries, nontraded prices fall by 7% on impact. The real exchange rate of the converging countries - measured by relative consumer prices - experiences a sharp initial appreciation of the order of 20%. Thereafter, there is a slow convergence of prices to the new steady state, characterised by higher nontraded prices in the home country and lower nontraded prices in the converging countries. The common interest rate gradually rises to a new steady-state value, lying, as demonstrated in the previous section, below the weighted average of the two autarkic rates. Overall, since the graphs are in annual terms, it is clear that the convergence to the steady state is very slow.

7. Some welfare implications

In the overlapping generations setup which we have employed here, the computation of aggregate welfare and changes therein is more complicated than in the usual case of infinitely-lived agents. This stems from the fact that, in order to derive a social welfare function, the welfare of the different past and future generations need to be aggregated using some weighting scheme. One prominent example of such a scheme is the time-consistent approach of Calvo and Obstfeld (1988). As it happens, in the context of the example considered in this paper, we can derive

¹¹ To solve the nonlinear differential equations we use the standard Matlab function (BVP4C)

strong welfare conclusions without recourse to the device of constructing such a social welfare function.

In fact, it can be easily established that the welfare of all currently alive and future generations in both countries rises (or more specifically does not decline) as a result of the creation of the monetary union. This can be seen by means of the following 'revealed-preference' argument. Given our assumptions, set out earlier, in the pre-EMU steady state each agent in the economy consumes his own endowment bundle in each period and country and agents do not engage in borrowing or lending. Now, following the creation of the monetary union, this consumption path - consuming the endowment each period - remains feasible. However, agents in fact choose different paths for consumption. Since the agents are choosing consumption paths to maximise their welfare and they have perfect foresight, we can conclude that the introduction of the monetary union does not reduce the welfare of any currently alive or future generation compared with the pre-EMU situation. In short, the creation of the monetary union and the associated financial integration expands the opportunity set of all agents in the economy. This enables agents to derive gains from the possibility to engage in intertemporal trade (which previously was not available) and thus leads to an improvement in (or at least no loss of) welfare. This is a standard result, which is, for example, discussed in detail in Chapter 1 of Obstfeld and Rogoff (1996). As we shall see below, while all generations gain from monetary union, the extent of the gain differs across generations and across countries.

In order to illustrate this point numerically, we compute for different representative generations in each country, the welfare that obtains under EMU compared to the welfare for the same agent that would prevail under financial autarky. For this purpose, we use the same parameters which were employed in the previous section. Specifically, for an agent born in period v , we solve for the consumption path and calculate their welfare at the time of their birth, given by:

$$W_v = \int_v^{\infty} \log(c_{v,s}) e^{-(\theta+\rho)(s-v)} ds \quad (7.20)$$

where $c_{v,s}$ denotes the consumption of an agent born in period v in period t .

In the autarkic steady state, consumption is equal to the (constant) endowment of traded and non-traded goods each period and, the welfare of the home and foreign consumer is given by calculating the integral in expression (7.20). This gives, for the home and foreign consumer respectively:

$$W_V^{H,A} = \frac{\log(\omega^H + \eta^H)}{\theta^H + \rho}$$

and

$$W_V^{F,A} = \frac{\log(\omega^F + \eta^F)}{\theta^F + \rho}$$

Note that under our assumptions, within each country welfare is the same across generations under autarky. This is our baseline case.

Now we consider what happens when, from period $t = 0$ onwards, a monetary union exists. For any generation, alive at time 0 or born subsequently, in either country we can calculate welfare by deriving the time path for the generation's consumption and calculating the value of the integral in (7.20)¹². We repeat this process for different generations in the two countries.

Before presenting the results, it is important to note that given our assumptions about demographics and consumption in the pre-EMU state, the optimisation problem facing agents of generation 0 will be identical to that of all previous generations currently alive in the economy in period 0. This reflects the fact that they all have the same life expectancy, the same endowment bundle and the same initial stock of financial assets (namely zero). Thus the results for this generation will also show us the welfare gains for all individuals alive at the time when the monetary union was created.

In order to present the results in an easily interpretable form, we express the gains in welfare in terms of the equivalent percentage difference in annual consumption necessary to yield the same level of welfare in the pre and post-EMU situations. This is given by:

$$(\theta + \rho) (W_{EMU} - W_A)$$

The results of this exercise are presented in Table 2, which shows results for the generations alive on the date of the creation of the monetary union (denoted $-\infty$ to 0 in the Table) and 5, 10, 20, 50 and 100 years afterwards. The row labelled ∞ refers to the welfare gains of an individual born in the steady state of the monetary union. The table shows us the percentage increase in annual consumption which would be needed without EMU in order to yield the same level of lifetime utility to the agent as under EMU. For example, for the generation of agents born on date 0 in the foreign country, the lifetime gain in welfare is equivalent to a permanent increase of 0.19% in consumption.

We observe the following features. First, the welfare of all generations in both countries increases as a result of the creation of the monetary union, in line with the revealed preference argument given above. Second, welfare gains tend to be larger in the foreign than in the home country. Third, the gains in welfare are larger for later generations and become very sizeable for the later generations in the foreign country. The latter two features deserve some comment. Intuitively, the size of the welfare gains for any generation depends on how large the difference in the 'average' real interest rate facing a typical member of that generation over its expected lifetime is from what would have prevailed without the EMU. By way of illustration, the last two columns in Table 2 show the average real interest rate expected to prevail over the lifetime of different generations¹³. From the results in the previous sections, we know that the gap be-

¹² The time path of individual consumption depends on aggregate variables (the interest rate and the price of non-traded goods). To derive a functional expression for consumption, we substitute the aggregate variables in the individual consumer's problem by using the linear approximations given by the solution of the linearised model. Solving the consumer's problem with this substitution then gives us an expression for the individual's consumption as function of time. Standard numerical integration algorithms can then be employed to calculate welfare. In fact, we calculate the integral using Gaussian quadrature with the standard Matlab function `quadl`.

¹³ The expected real interest rate over the life of a generation born in period t is calculated as $\rho \int_t^\infty e^{-\rho(s-t)} (r(s) - \pi(s)) ds$ where $r(s)$ and $\pi(s)$ denote respectively the nominal interest rate and consumer price inflation rate in period s and ρ is the mortality rate.

tween the actual real interest rate and the pre-EMU interest rates is larger for the foreign than the home country. (This of course partly reflects our assumptions on the relative size of the two countries.) Therefore, for any given generation, the welfare gains will be larger for the foreign than the home country.

Let us now consider explicitly the influence of consumer inflation on the real interest rate in each country. In the foreign country the real interest rate will be declining over time. The decline results from both a fall in the nominal interest rate and an increase in inflation (or, more precisely, a gradual fall to zero in the rate of deflation). Hence the gap with the pre-EMU rate will increase over time. This implies that generations in the foreign country which are born later will experience larger welfare gains than generations born earlier. For the home country, the real interest rate is rising slightly over time (reflecting the offsetting effect of a falling nominal interest rate and declining inflation, with the latter dominating). Hence the gap with the pre-EMU real rate will also increase for the home country. Therefore, also here, generations born later will experience higher welfare gains than earlier generations¹⁴.

8. Conclusion

The move to monetary union led to interest rate convergence among the participating countries. Interestingly, this convergence was associated with sharp differences in the behaviour of macroeconomic variables between two groups of countries: core countries (Germany and countries closely associated with Germany, such as Belgium, the Netherlands, France, Luxembourg and Austria) and converging countries (Spain, Ireland, Italy and Portugal). The difference is that the former group enjoyed relatively low interest rates prior to monetary unification.

We documented a number of key stylized facts regarding the macroeconomic effects of this interest rate convergence. We then proceeded to develop a simple two-country, two-good (traded and non-traded) dynamic general equilibrium model to explain these facts. We used this model to derive a number of normative implications regarding the welfare effects of the monetary union.

We showed that there were notable cross-country differences in the behaviour of key macroeconomic aggregates: domestic demand, current account balances and intra-euro area real exchange rates. Compared to the core countries, the converging countries experienced a boom in domestic demand (principally reflecting higher household expenditures), a deterioration of the current account and an appreciation of the real exchange rate. Interestingly, the convergence of interest rates does not seem to have been associated with significant changes in output growth differentials.

The simple model that we develop is capable of capturing most salient, qualitative features of adjustment. Specifically, in the two-country, two-goods endowment economy, the convergence in interest rates resulting from the monetary union leads to notable differences in expenditures in the two country groups, with former high interest rate countries experiencing a sharp increase in household expenditure, accompanied by a current account deficit and the accumulation of a debtor position vis-a-vis the remaining countries. This is followed by a slow process of adjustment to a new steady state in which consumption is lower (higher) in the high interest rate

¹⁴ In our setting, as discussed in Section 5.2, there is a discontinuous decrease (increase) in consumer prices in the home (foreign) country. If we considered habit formation (as in Fagan and Gaspar (2007)), the dynamics of the real exchange rate would include an initial gradual adjustment and a subsequent inversion.

countries (low interest rate countries) reflecting the accumulation of foreign assets/liabilities. In our model, the real exchange rate (defined as the relative price of non-tradeable goods) follows exactly the path of aggregate expenditure in both countries. In other words, high interest rate countries initially experience an upward jump in the real exchange rate followed by a gradual decline to a level lower than in the initial steady state.

As regards welfare, we presented a very simple and intuitive revealed preference argument to show that, in our setup, monetary unification is welfare-improving for all generations in both countries. The argument shows that monetary unification leads to an expansion of the opportunity set of all generations. It leads to an allocation of resources which is Pareto superior. While all generations experience a gain in welfare, the extent of the gains differs across countries and across generations. In our numerical example, the gains in welfare are larger in the former high interest rate countries and, within the same country, later generations tend to benefit more than generations born earlier. In line with standard arguments regarding the gains from intertemporal trade, this pattern can be explained by the fact that, compared to a non-EMU situation, the difference in the real interest rate facing countries and generations is larger for the foreign country and, within a given country, is higher for later generations.

Appendix I: Data sources

The main data source for the results presented in Section 2 is the EU Commission's AMECO database. The codes for the series employed are as follows: nominal short-term interest rates (ISN), nominal long-term interest rates (ILN), the household savings rate (ASGH), nominal housing investment (UIGDW), the current account balance (UBCA), HICP (ZCPIH), whole economy net lending (UBLA), general government net lending (UBLG), household net lending (UBLH), nominal GDP (UVGD) and real GDP (OVGD). Non housing investment is calculated as the difference between total investment (UIGT) and housing investment.

The exceptions to the use of AMECO are as follows. The credit to households data came from the OECD Financial Balance Sheet databank (except in the case of Ireland where the source was various issues of the Central Bank of Ireland Quarterly Bulletin). The data on net foreign assets are taken from Lane and Milesi-Ferreti (2006). The data on the Harmonised Index of Consumer Prices (HICP) were taken from Eurostat while the data on relative consumer prices come from Eurostat's Comparative Consumer Price Level dataset and relate to price levels for final consumption by private households. For Portugal and Ireland, the data on net lending shown in Chart 13 are from the Banco de Portugal and the authors own calculations respectively.

Ratios to GDP were calculated by dividing the respective series (as described above) by nominal GDP. The variables for the core countries were calculated by taking the cross-country arithmetic means of the respective variables for Belgium, Germany, France, Austria and the Netherlands. Converging country variables were similarly calculated using data for Ireland, Italy, Portugal and Spain.

Appendix II: Steady state

To determine the post-monetary union steady state we proceed by first deriving the steady-state foreign assets as a function of r and then, using these results, determining the steady-state value of r . In what follows, let $r^{av} = \frac{\omega^H \theta^H + \omega^F \theta^F}{\omega^H + \omega^F}$, i.e. the weighted average of the rates of time preference in the two countries. As regards the first step, consider the fixed point of (3.9) as a function of the interest rate, i.e.

$$F(r) = \left(-\omega^H + \left(\frac{r - \theta^F}{\theta^H - \theta^F} \right) (\omega^H + \omega^F) \right) / (r + \alpha\rho) \quad (8.21)$$

This is clearly a continuous function for $r \neq -\alpha\rho$. Moreover, for $r < \theta^F$ this is a decreasing function of r . Now,

$$F(\theta^H) = \frac{\omega^F}{r + \alpha\rho} > 0$$

and

$$F(r^{av}) = 0$$

We next examine the steady-state interest rate. From the differential equation for the interest rate (5.17), the steady state of r is given by the solution of:

$$g(r) = \frac{\alpha\rho\omega^H(\theta^H - \theta^F)}{(\omega^H + \omega^F)} + (r - \theta^H - \alpha\rho)(r - \theta^F) - \frac{\alpha(\theta^H - \theta^F)\rho^2(1 - \alpha)}{(\omega^H + \omega^F)} F(r) = 0 \quad (8.22)$$

Clearly, $g(r)$ is a continuous function. Now, substituting for $F(r)$ from (8.21), we have, for $r = \theta^H$:

$$g(\theta^H) = \frac{-\alpha\rho\omega^F(\theta^H - \theta^F)}{(\omega^H + \omega^F)} - \frac{\alpha(\theta^H - \theta^F)\rho^2(1 - \alpha)}{(\omega^H + \omega^F)} \frac{\omega^F}{r + \alpha\rho} > 0 \quad (8.23)$$

Also:

$$g(r^{av}) = (r^{av} - \theta^H) (r^{av} - \theta^F) < 0$$

Thus, since $g(r)$ is continuous on \mathbb{R} , by the Intermediate Value Theorem, there exists an \bar{r} , with $\theta^H < \bar{r} < r^{av} < \theta^F$, such that $g(\bar{r}) = 0$. This is the steady-state value of r that we are interested in.

Combining this result with the results we had for foreign assets, we obtain for this steady state, since F is a decreasing function of r and $\bar{r} < r^{av}$:

$$\bar{F} > 0$$

In order to determine the effect of interest rate convergence on steady state nominal consumption and prices, we proceed as follows. First, rearranging (3.7) we have, in steady state:

$$F = \left(\frac{r - \theta^H}{\rho(\theta^H + \rho)} \right) Z^H$$

Substituting into the steady-state version of (5.13) we get

$$Z^H = \left(\frac{r - \theta^F}{r + \rho} \right) \left(\frac{\omega^H + \omega^F}{\alpha} \right) \left(\frac{\theta^H + \rho}{\theta^H - \theta^F} \right)$$

Differentiating with respect to r we have:

$$\frac{dZ^H}{dr} = \frac{(\omega^H + \omega^F)(\theta^F + \rho)(\theta^H + \rho)}{(r + \rho)^2(\theta^H - \theta^F)\alpha} < 0$$

Recalling that $r^{av} = \frac{\omega^H\theta^H + \omega^F\theta^F}{\omega^H + \omega^F}$. We have shown above that when $r = r^{av}$, $F = 0$. At this interest rate, $\alpha Z^H = \omega^H$. But this is the level of (nominal) consumption which prevailed in the pre-EMU steady state. In the post EMU steady state, we know that:

$$\bar{r} < r^{av}$$

Given that the derivative of Z^H wrt r is negative, this implies that in the EMU steady state:

$$\bar{Z}^H > Z_0^H$$

Using the expressions given in Section 3.1, this also implies that in the EMU steady state, real consumption, the price of non-traded goods and the consumer price index are all higher than in the autarky steady state. Noting the global equilibrium condition for traded goods (3.10), we clearly have:

$$\bar{Z}^F < Z_0^F$$

with corresponding implications for real consumption, nontraded prices and the consumer price index in the foreign country.

References

- ASHENFELTER, O. (1978): "Estimating the Effect of Training Programs on Earnings," *Review of Economics and Statistics*, 60(1), 47–57.
- BARRO, R. AND X. SALA-I-MARTIN (2003): *Economic Growth*, Cambridge, MA: MIT Press.
- BATES, D. (1999): "Financial Markets' Assessment of EMU," *Carnegie-Rochester Series on Public Policy*, 51, 229–269.
- BENALAL, J., J.-L. DEL HOYO, B. PIERLUIGI, AND N. VIDALIS (2006): "Output Growth Differentials Across the Euro Area Countries: Some Stylised Facts," *ECB Occasional Paper no. 45*.
- BLANCHARD, O. (1985): "Debt, Deficits and Finite Horizons," *Journal of Political Economy*, 93, 223–247.
- BLANCHARD, O. AND S. FISHER (1989): *Lectures on Macroeconomics*, Cambridge, MA: MIT Press.
- BLANCHARD, O. AND F. GIAVAZZI (2002): "Current Account Deficits in the Euro Area: the end of the Feldstein-Horioka Puzzle," *Brookings Papers on Economic Activity*, 2, 147–186.
- CALVO, G. AND M. OBSTFELD (1988): "Optimal Time-Consistent Fiscal Policy with Finite Lifetimes," *Econometrica*, 56(2), 411–432.
- CARD, D. AND A. KRUEGER (1994): "Minimum Wages and Employment: A Case Study of the Fast-Food Industry in New Jersey and Pennsylvania," *American Economic Review*, 84(4), 772–793.
- ECB (2007): "Output Growth Differentials in the Euro Area: Source and Implications," *ECB Monthly Bulletin*, April, 73–86.
- FAGAN, G. AND V. GASPAR (2005): "Adjusting to the Euro: Some Issues inspired by the Portuguese experience," *Presented at ECB June 2005 Workshop on What Effects is EMU Having on the Euro Area and Its Member States?*, available at www.ecb.int.
- (2007): "Adjusting to the Euro," *ECB Working Paper Series N°716*.
- FAVERO, C., F. GIAVAZZI, F. IACONE, AND G. TABELLINI (2000): "Extracting Information from Asset Prices: The Methodology of EMU Calculators," *European Economic Review*, 44, 1607–1632.
- GOURINCHAS, P.-O. AND O. JEANNE (2006): "The Elusive Gains from International Financial Integration," *Review of Economic Studies*, 73(3), 715–741.
- LANE, P. (2006): "The Real Effects of European Monetary Union," *Journal of Economic Perspectives*, 20(4), 47–66.
- LANE, P. AND G. MILESI-FERRETI (2006): "The External Wealth of Nations Mrk II: Revised and Expanded Estimates of Foreign Assets and liabilities, 1970-2004.," *IMF Working Paper 06/69*.
- LANGEDIJK, S. AND W. ROEGER (2007): "Adjustment in EMU: A Model-based Comparison of Country Experiences," *European Commission Economic Paper Series N°274*.

MONGELLI, F. AND J. VEGA (2006): "What Effects is EMU Having on the Euro Area and Its Member Countries?" *ECB Working Paper Series N°599*.

OBSTFELD, M. AND K. ROGOFF (1996): *Foundations of International Macroeconomics*, Cambridge MA: MIT Press.

——— (2004): "The Unsustainable US Current Account Position Revisited," *NBER Working Paper, 10869*.

YAARI, M. E. (1965): "Uncertain Lifetime, Life Insurance and the Theory of the Consumer," *Review of Economic Studies*, 32, 137–150.

Table 1. Difference-in-difference estimates

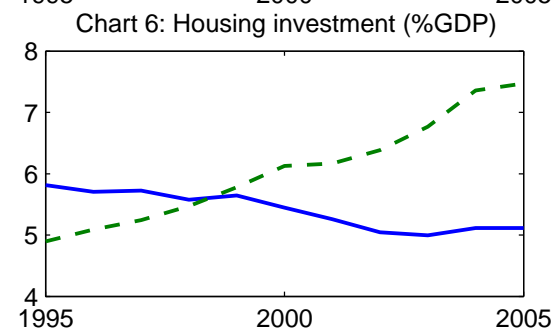
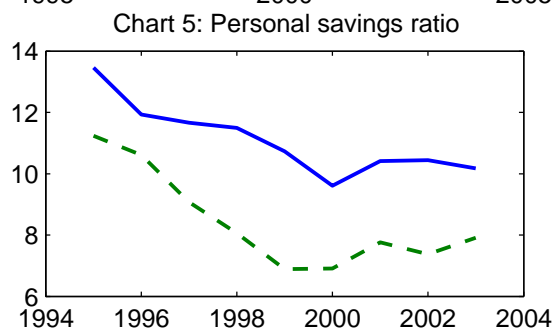
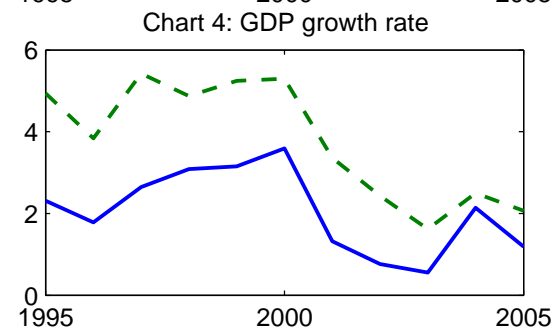
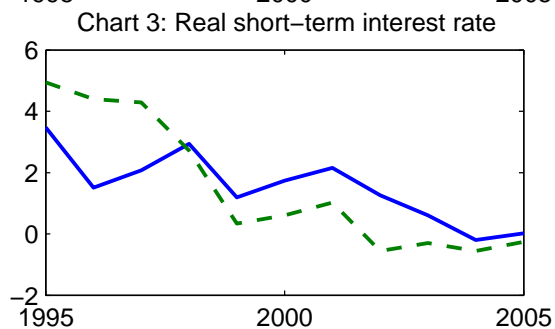
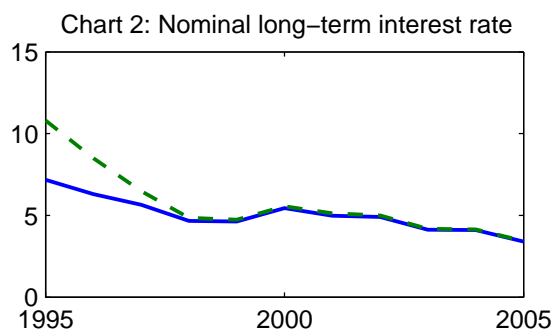
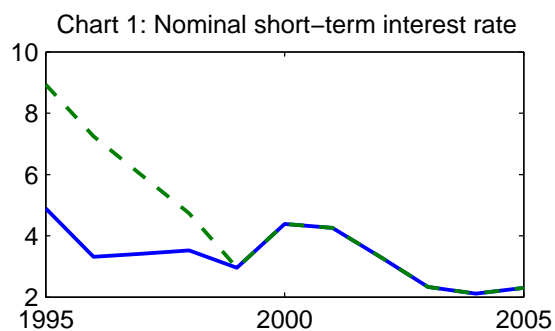
Variable	Coefficient (α_3)	t-ratio
Nominal short interest rate	-2.93	-6.3
Nominal long interest rate	-1.62	-3.2
Real short interest rate	-2.63	-6.2
Households savings ratio	-0.51	-0.4
Housing investment/GDP	1.87	2.9
Non-housing investment/GDP	0.98	1.1
GDP growth rate	-0.91	-1.0
Current account balance/GDP	-3.81	-2.8
Net foreign assets/GDP	-19.12	-2.0
HICP inflation	-0.29	-0.8
Relative consumer prices	7.92	2.2
Household net lending/GDP	-3.05	-2.69
Companies net lending/GDP	-1.91	-1.45
General Government net lending/GDP	0.63	0.71

(based on annual data for 1995 to 2005)

Table 2. Welfare Gains from EMU* and expected average real interest rate

Generation	Welfare Gains		Expected Real Rate	
	Home	Foreign	Home	Foreign
$-\infty$ to 0	0.05	0.19	4.14	4.66
5	0.05	0.19	4.15	4.63
10	0.05	0.22	4.15	4.61
20	0.07	0.33	4.16	4.56
50	0.17	0.95	4.17	4.45
100	0.32	2.22	4.17	4.32
∞	0.50	4.35	4.18	4.18

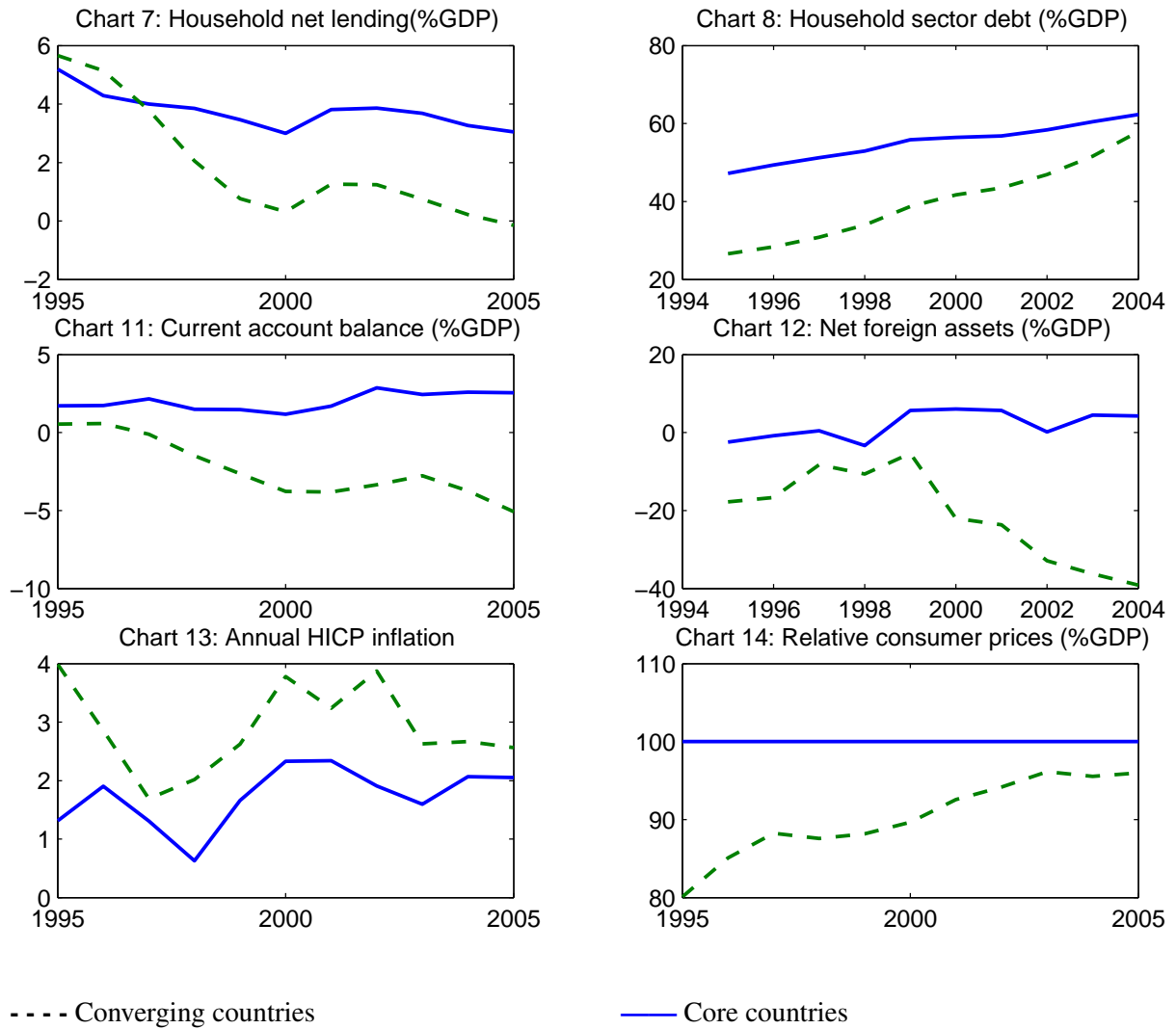
(* as a percent of annual consumption)



- - - - Converging countries

— Core countries

The charts display averages for each variable and country group. "Core countries" includes Austria, Belgium, France, Germany and the Netherlands. "Converging countries" includes Ireland, Italy, Portugal and Spain.



The charts display averages for each variable and country group. "Core countries" includes Austria, Belgium, France, Germany and the Netherlands. "Converging countries" includes Ireland, Italy, Portugal and Spain.

Figure 1: Adjustment dynamics for interest rates and foreign assets

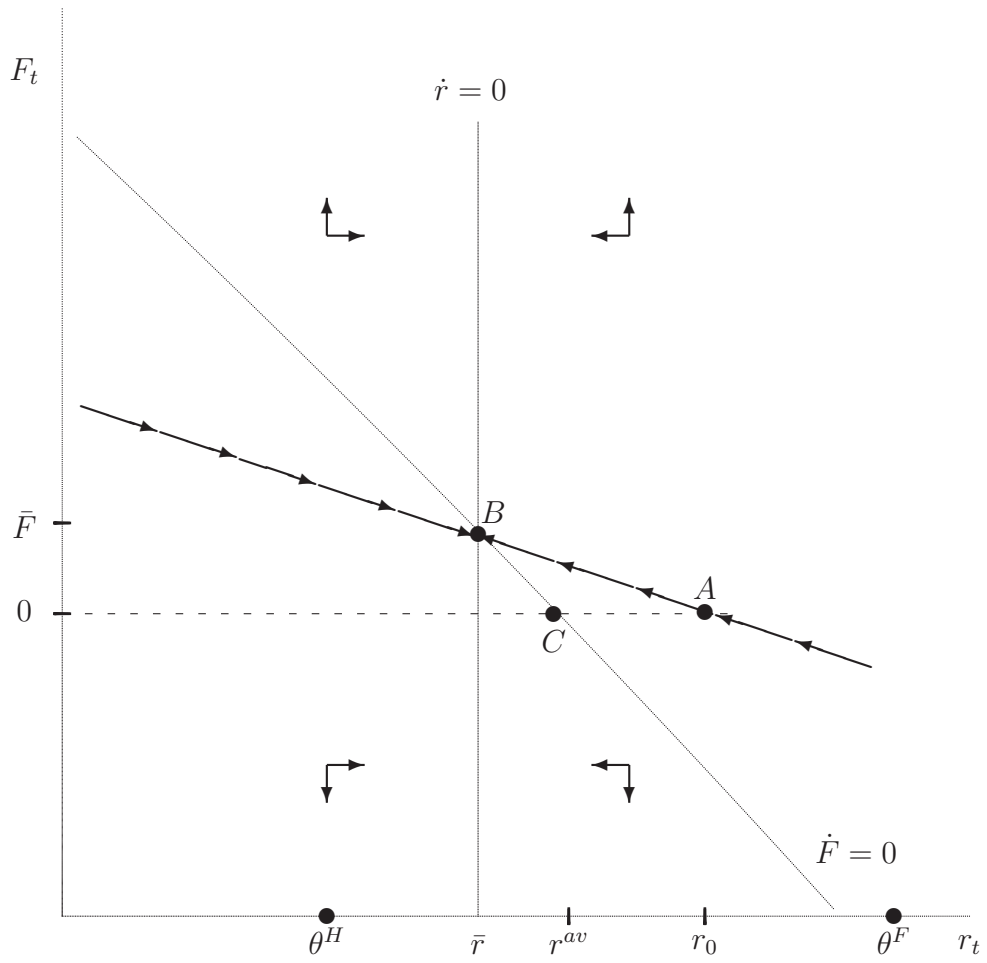
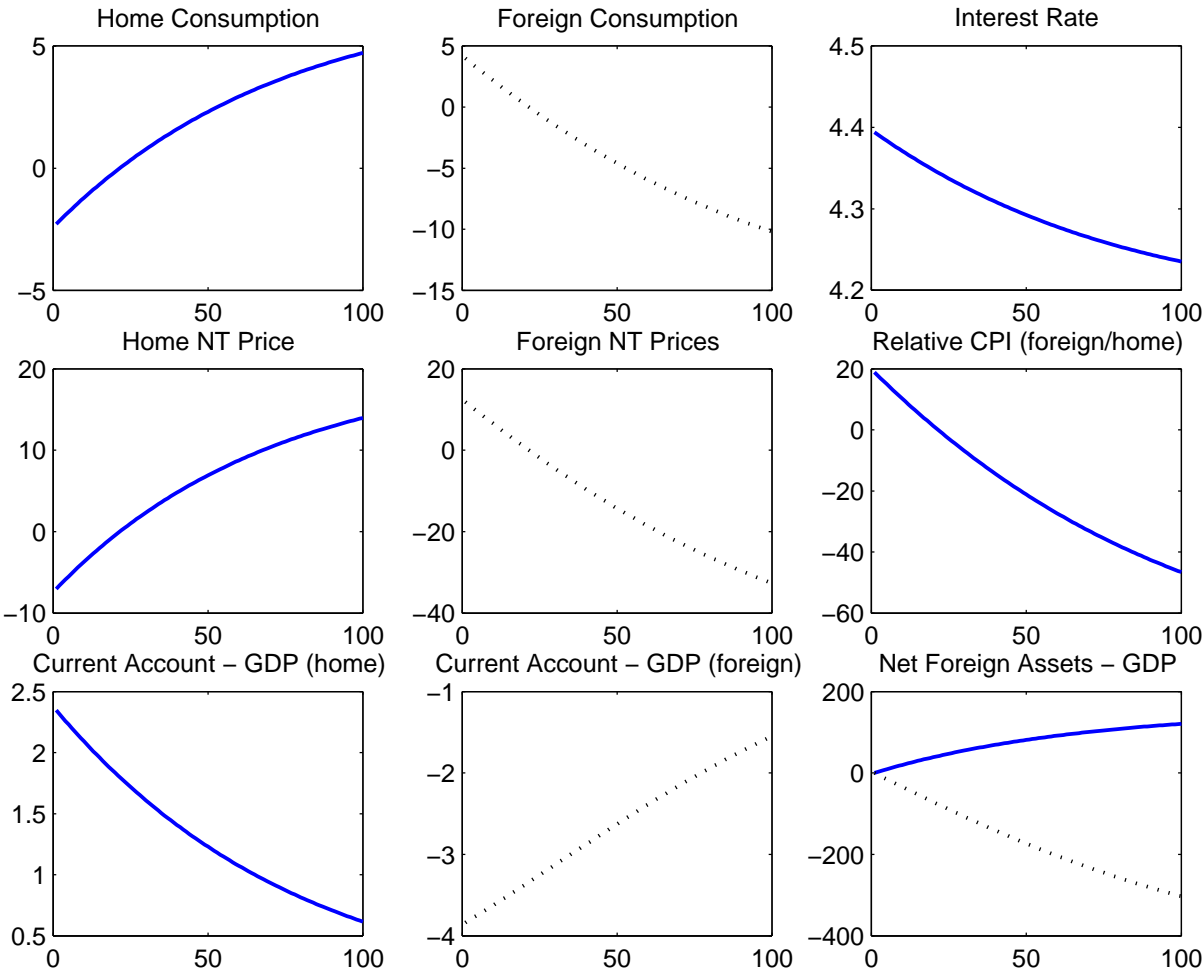


Figure 2: Simulated response to monetary union



CNB WORKING PAPER SERIES

14/2008	Gabriel Fagan Vitor Gaspar	<i>Macroeconomic Adjustment to Monetary Union</i>
13/2008	Giuseppe Bertola Anna Lo Prete	<i>Openness, financial markets, and policies: Cross-country and dynamic patterns</i>
12/2008	Jan Babecký Kamil Dybczak Kamil Galuščák	<i>Survey on wage and price formation of Czech firms</i>
11/2008	Dana Hájková	<i>The measurement of capital services in the Czech Republic</i>
10/2008	Michal Franta	<i>Time aggregation bias in discrete time models of aggregate duration data</i>
9/2008	Petr Jakubík Christian Schmieder	<i>Stress testing credit risk: Is the Czech Republic different from Germany?</i>
8/2008	Sofia Bauducco Aleš Bulíř Martin Čihák	<i>Monetary policy rules with financial instability</i>
7/2008	Jan Brůha Jiří Podpiera	<i>The origins of global imbalances</i>
6/2008	Jiří Podpiera Marie Raková	<i>The price effects of an emerging retail market</i>
5/2008	Kamil Dybczak David Voňka Nico van der Windt	<i>The effect of oil price shocks on the Czech economy</i>
4/2008	Magdalena M. Borys Roman Horváth	<i>The effects of monetary policy in the Czech Republic: An empirical study</i>
3/2008	Martin Cincibuch Tomáš Holub Jaromír Hurník	<i>Central bank losses and economic convergence</i>
2/2008	Jiří Podpiera	<i>Policy rate decisions and unbiased parameter estimation in conventionally estimated monetary policy rules</i>
1/2008	Balázs Égert Doubravko Mihaljek	<i>Determinants of house prices in Central and Eastern Europe</i>
17/2007	Pedro Portugal	<i>U.S. unemployment duration: Has long become longer or short become shorter?</i>
16/2007	Yuliya Rychalovská	<i>Welfare-based optimal monetary policy in a two-sector small open economy</i>
15/2007	Juraj Antal František Brázdík	<i>The effects of anticipated future change in the monetary policy regime</i>
14/2007	Aleš Bulíř Kateřina Šmídková Viktor Kotlán David Navrátil	<i>Inflation targeting and communication: Should the public read inflation reports or tea leaves?</i>
13/2007	Martin Cincibuch Martina Horníková	<i>Measuring the financial markets' perception of EMU enlargement: The role of ambiguity aversion</i>
12/2007	Oxana Babetskaia- Kukharchuk	<i>Transmission of exchange rate shocks into domestic inflation: The case of the Czech Republic</i>
11/2007	Jan Filáček	<i>Why and how to assess inflation target fulfilment</i>
10/2007	Michal Franta	<i>Inflation persistence in new EU member states: Is it different than</i>

	Branislav Saxa Kateřina Šmídková	<i>in the Euro area members?</i>
9/2007	Kamil Galuščák Jan Pavel	<i>Unemployment and inactivity traps in the Czech Republic: Incentive effects of policies</i>
8/2007	Adam Geršl Ieva Rubene Tina Zumer	<i>Foreign direct investment and productivity spillovers: Updated evidence from Central and Eastern Europe</i>
7/2007	Ian Babetskii Luboš Komárek Zlataše Komárková	<i>Financial integration of stock markets among new EU member states and the euro area</i>
6/2007	Anca Pruteanu-Podpiera Laurent Weill Franziska Schobert	<i>Market power and efficiency in the Czech banking sector</i>
5/2007	Jiří Podpiera Laurent Weill	<i>Bad luck or bad management? Emerging banking market experience</i>
4/2007	Roman Horváth	<i>The time-varying policy neutral rate in real time: A predictor for future inflation?</i>
3/2007	Jan Brůha Jiří Podpiera Stanislav Polák	<i>The convergence of a transition economy: The case of the Czech Republic</i>
2/2007	Ian Babetskii Nauro F. Campos	<i>Does reform work? An econometric examination of the reform-growth puzzle</i>
1/2007	Ian Babetskii Fabrizio Coricelli Roman Horváth	<i>Measuring and explaining inflation persistence: Disaggregate evidence on the Czech Republic</i>
13/2006	Frederic S. Mishkin Klaus Schmidt- Hebbel	<i>Does inflation targeting make a difference?</i>
12/2006	Richard Disney Sarah Bridges John Gathergood	<i>Housing wealth and household indebtedness: Is there a household 'financial accelerator'?</i>
11/2006	Michel Juillard Ondřej Kameník Michael Kumhof Douglas Laxton	<i>Measures of potential output from an estimated DSGE model of the United States</i>
10/2006	Jiří Podpiera Marie Raková	<i>Degree of competition and export-production relative prices when the exchange rate changes: Evidence from a panel of Czech exporting companies</i>
9/2006	Alexis Derviz Jiří Podpiera	<i>Cross-border lending contagion in multinational banks</i>
8/2006	Aleš Bulíř Jaromír Hurník	<i>The Maastricht inflation criterion: "Saints" and "Sinners"</i>
7/2006	Alena Bičáková Jiří Slačálek Michal Slavík	<i>Fiscal implications of personal tax adjustments in the Czech Republic</i>
6/2006	Martin Fukač Adrian Pagan	<i>Issues in adopting DSGE models for use in the policy process</i>
5/2006	Martin Fukač	<i>New Keynesian model dynamics under heterogeneous expectations and adaptive learning</i>

4/2006	Kamil Dybczak Vladislav Flek Dana Hájková Jaromír Hurník	<i>Supply-side performance and structure in the Czech Republic (1995–2005)</i>
3/2006	Aleš Krejdl	<i>Fiscal sustainability – definition, indicators and assessment of Czech public finance sustainability</i>
2/2006	Kamil Dybczak	<i>Generational accounts in the Czech Republic</i>
1/2006	Ian Babetskii	<i>Aggregate wage flexibility in selected new EU member states</i>
<hr/>		
14/2005	Stephen G. Cecchetti	<i>The brave new world of central banking: The policy challenges posed by asset price booms and busts</i>
13/2005	Robert F. Engle Jose Gonzalo Rangel	<i>The spline GARCH model for unconditional volatility and its global macroeconomic causes</i>
12/2005	Jaromír Beneš Tibor Hlédik Michael Kumhof David Vávra	<i>An economy in transition and DSGE: What the Czech national bank's new projection model needs</i>
11/2005	Marek Hlaváček Michael Koňák Josef Čada	<i>The application of structured feedforward neural networks to the modelling of daily series of currency in circulation</i>
10/2005	Ondřej Kameník	<i>Solving SDGE models: A new algorithm for the Sylvester equation</i>
9/2005	Roman Šustek	<i>Plant-level nonconvexities and the monetary transmission mechanism</i>
8/2005	Roman Horváth	<i>Exchange rate variability, pressures and optimum currency area criteria: Implications for the central and eastern European countries</i>
7/2005	Balázs Égert Luboš Komárek	<i>Foreign exchange interventions and interest rate policy in the Czech Republic: Hand in glove?</i>
6/2005	Anca Podpiera Jiří Podpiera	<i>Deteriorating cost efficiency in commercial banks signals an increasing risk of failure</i>
5/2005	Luboš Komárek Martin Melecký	<i>The behavioural equilibrium exchange rate of the Czech koruna</i>
4/2005	Kateřina Arnoštová Jaromír Hurník	<i>The monetary transmission mechanism in the Czech Republic (evidence from VAR analysis)</i>
3/2005	Vladimír Benáček Jiří Podpiera Ladislav Prokop	<i>Determining factors of Czech foreign trade: A cross-section time series perspective</i>
2/2005	Kamil Galuščák Daniel Münich	<i>Structural and cyclical unemployment: What can we derive from the matching function?</i>
1/2005	Ivan Babouček Martin Jančar	<i>Effects of macroeconomic shocks to the quality of the aggregate loan portfolio</i>
<hr/>		
10/2004	Aleš Bulíř Kateřina Šmídková	<i>Exchange rates in the new EU accession countries: What have we learned from the forerunners</i>
9/2004	Martin Cincibuch Jiří Podpiera	<i>Beyond Balassa-Samuelson: Real appreciation in tradables in transition countries</i>
8/2004	Jaromír Beneš David Vávra	<i>Eigenvalue decomposition of time series with application to the Czech business cycle</i>

7/2004	Vladislav Flek, ed.	<i>Anatomy of the Czech labour market: From over-employment to under-employment in ten years?</i>
6/2004	Narcisa Kadlčáková Joerg Keplinger	<i>Credit risk and bank lending in the Czech Republic</i>
5/2004	Petr Král	<i>Identification and measurement of relationships concerning inflow of FDI: The case of the Czech Republic</i>
4/2004	Jiří Podpiera	<i>Consumers, consumer prices and the Czech business cycle identification</i>
3/2004	Anca Pruteanu	<i>The role of banks in the Czech monetary policy transmission mechanism</i>
2/2004	Ian Babetskii	<i>EU enlargement and endogeneity of some OCA criteria: Evidence from the CEECs</i>
1/2004	Alexis Derviz Jiří Podpiera	<i>Predicting bank CAMELS and S&P ratings: The case of the Czech Republic</i>

CNB RESEARCH AND POLICY NOTES

1/2008	Nicos Christodoulakis	<i>TEN YEARS OF EMU: Convergence, Divergence and New Policy Priorities</i>
2/2007	Carl E. Walsh	<i>Inflation targeting and the role of real objectives</i>
1/2007	Vojtěch Benda Luboš Růžička	<i>Short-term forecasting methods based on the LEI approach: The case of the Czech Republic</i>
2/2006	Garry J. Schinasi	<i>Private finance and public policy</i>
1/2006	Ondřej Schneider	<i>The EU budget dispute – A blessing in disguise?</i>
5/2005	Jan Stráský	<i>Optimal forward-looking policy rules in the quarterly projection model of the Czech National Bank</i>
4/2005	Vít Bárta	<i>Fulfilment of the Maastricht inflation criterion by the Czech Republic: Potential costs and policy options</i>
3/2005	Helena Šůvová Eva Kozelková David Zeman Jaroslava Bauerová	<i>Eligibility of external credit assessment institutions</i>
2/2005	Martin Čihák Jaroslav Heřmánek	<i>Stress testing the Czech banking system: Where are we? Where are we going?</i>
1/2005	David Navrátil Viktor Kotlán	<i>The CNB's policy decisions – Are they priced in by the markets?</i>
4/2004	Aleš Bulíř	<i>External and fiscal sustainability of the Czech economy: A quick look through the IMF's night-vision goggles</i>
3/2004	Martin Čihák	<i>Designing stress tests for the Czech banking system</i>
2/2004	Martin Čihák	<i>Stress testing: A review of key concepts</i>
1/2004	Tomáš Holub	<i>Foreign exchange interventions under inflation targeting: The Czech experience</i>

CNB ECONOMIC RESEARCH BULLETIN

November 2008	<i>Inflation Targeting and DSGE Models</i>
April 2008	<i>Ten years of inflation targeting</i>
December 2007	<i>Fiscal policy and its sustainability</i>
August 2007	<i>Financial stability in a transforming economy</i>
November 2006	<i>ERM II and euro adoption</i>
August 2006	<i>Research priorities and central banks</i>
November 2005	<i>Financial stability</i>
May 2005	<i>Potential output</i>
October 2004	<i>Fiscal issues</i>
May 2004	<i>Inflation targeting</i>
December 2003	<i>Equilibrium exchange rate</i>

Czech National Bank
Economic Research Department
Na Příkopě 28, 115 03 Praha 1
Czech Republic
phone: +420 2 244 12 321
fax: +420 2 244 14 278
<http://www.cnb.cz>
e-mail: research@cnb.cz
ISSN 1803-7070