



národní  
úložiště  
šedé  
literatury

### **Does reform work?**

Babetskii, Ian; Campos, Nauro F.  
2007

Dostupný z <http://www.nusl.cz/ntk/nusl-123978>

Dílo je chráněno podle autorského zákona č. 121/2000 Sb.

Tento dokument byl stažen z Národního úložiště šedé literatury (NUŠL).

Datum stažení: 16.06.2024

Další dokumenty můžete najít prostřednictvím vyhledávacího rozhraní [nusl.cz](http://nusl.cz) .

## WORKING PAPER SERIES 2

Ian Babetskii and Nauro F. Campos:  
Does Reform Work? An Econometric Examination of the Reform-Growth Puzzle

7  
2020

# **WORKING PAPER SERIES**

## **Does Reform Work? An Econometric Examination of the Reform-Growth Puzzle**

Ian Babetskii  
Nauro F. Campos

2/2007

## **CNB WORKING PAPER SERIES**

The Working Paper Series of the Czech National Bank (CNB) is intended to disseminate the results of the CNB's research projects as well as the other research activities of both the staff of the CNB and collaborating outside contributor, including invited speakers. The Series aims to present original research contributions relevant to central banks. It is refereed internationally. The referee process is managed by the CNB Research Department. The working papers are circulated to stimulate discussion. The views expressed are those of the authors and do not necessarily reflect the official views of the CNB.

Printed and distributed by the Czech National Bank. Available at <http://www.cnb.cz>.

Reviewed by:	Roman Horváth	(Czech National Bank)
	Jan Ámos Víšek	(Faculty of Social Sciences, Charles University, Prague)
	László Halpern	(Hungarian Academy of Science)

Project Coordinator: Vladislav Flek

© Czech National Bank, September 2007  
Ian Babetskii, Nauro F. Campos

# **Does Reform Work?**

## **An Econometric Examination of the Reform-Growth Puzzle**

Ian Babetskii and Nauro F. Campos \*

### **Abstract**

Despite the many benefits associated with structural reforms, the literature has thus far failed to establish a positive significant effect of reforms on growth. Using data from 43 econometric studies, we show that one third of the coefficients (of reform on growth) are positive and significant, another third are negative and significant, and the final third are not statistically significant. In trying to understand this remarkable variation, we find that the measurement of reform and controlling for institutions and initial conditions are the main factors in decreasing the probability of reporting a significant and positive effect of reform on growth.

**JEL Codes:** O11, P21, C49.

**Keywords:** Growth, liberalisation, structural reforms, transition.

---

\* Ian Babetskii, Czech National Bank, CERGE-EI and CES-ROSES, University of Paris-1 Sorbonne (e-mail: [ian.babetskii@cnb.cz](mailto:ian.babetskii@cnb.cz));

Nauro F. Campos, Corresponding author, Department of Economics, Brunel University, London, United Kingdom, Brunel University, CEPR-London, IZA-Bonn and WDI-University of Michigan (e-mail: [nauro.campos@brunel.ac.uk](mailto:nauro.campos@brunel.ac.uk)).

This work was supported by Czech National Bank.

We thank Fabrizio Coricelli, Balazs Egert, Jan Fidrmuc, Jarko Fidrmuc, Laszlo Halpern, Jan Hanousek, Roman Horvath, Evzen Kocenda, Iikka Korhonen, Tomasz Mickiewicz, Bilin Neyapti, Richard Pomfret, Karsten Staehr, T. D. Stanley, Johan Swinnen, Jan Visek and seminar participants at the Czech National Bank, Czech Economic Society, European Bank for Reconstruction and Development (EBRD), Western Economic Association (San Diego) and European Econometric Society (Vienna) for valuable comments on previous drafts. Evgeny Plaksen, Dana Popa and Ekaterina Shironosova provided superb research assistance. Campos is grateful for financial support from the Economic and Social Research Council (ESRC), Research Grant RES-000-22-0550. All remaining errors are entirely our own.

## Nontechnical Summary

In the last two decades or so, a great deal of effort has been dedicated to understanding the determinants and the implications of macroeconomic stabilisation and structural reforms. A large number of reform programmes have been designed and implemented with varying degrees of success across the world. The *reform-growth puzzle* refers to the fact that the econometric literature has not yet succeeded in uncovering the expected positive and significant effect of structural reforms on economic growth.

In this study we summarise and evaluate the existing econometric evidence on the effect of reforms on economic performance. We put together a unique data set which incorporates information from 43 econometric studies and contains more than 300 coefficients on the effects of reform on growth. Our results show that approximately one third of these coefficients are positive and significant, another third are negative and significant, and the final third are not statistically significant different from zero. We investigate the direction of the effect of structural reforms on economic performance and its statistical significance in relation to more than 40 features or characteristics of the underlying econometric studies, encompassing estimation method, measurement and specification.

In trying to understand this remarkable variation, we apply recently developed meta-regression analysis techniques, in which the dependent variable is a summary statistic while the independent variables cover various features of the methods and data used in each study. We find that controlling for institutions and initial conditions are the main factors in decreasing the probability of reporting a significant and positive effect of reform on growth. Our results illustrate that ignoring the problem of endogeneity of reforms vis-à-vis growth may lead to severely biased estimates. Next, we find that the use of panel methods and the time coverage are important in explaining the variation in the estimated effects. The use of lagged reform measures shows that reforms have negative contemporaneous effects which can be offset by positive effects in subsequent periods, after some level of reform is in place. The estimated relationship between reform and growth seems to change over time. We also find that the existing results are sensitive to the choice of the measure of reform used.

Furthermore, we spell out a number of research implications from our findings. In terms of future research, considerably more attention should be paid to measurement of GDP and structural reforms. Another key issue is the interaction between different types of reforms and their sequencing. Efforts could also be made to explicate the theoretical framework guiding the econometric analysis.

Several policy implications also follow from our study. First, there is a high variation in both the sign and the significance of the effect of structural reforms on growth. Second, the results of our meta-regression analysis suggest that the initial costs of reforms depend on the type of reform. Lastly, those building conventional and dynamic macro models should try to account for structural reforms.

## 1. Introduction

Arguably one of the most intense debates of recent times has been on the macroeconomic implications of structural reforms, or more specifically, on the economic growth pay-offs from structural reforms. Since the late 1980s, a large number of structural reform programmes have been implemented across the world with varying degrees of success. The reasons for this variation are still at large and have raised a number of important questions. Did reform work? Did the expected growth and welfare pay-offs materialise? What do we know about the evaluation of those reform efforts? How robust are the available econometric estimates of the effects of reform on growth? What are the main factors that help explain their variation? Is the variation driven by data quality issues, diversity of theoretical frameworks, or differences in econometric methodology? Does how reform is measured matter?

We first try to take stock of the econometric evidence on the impact of structural reforms on economic growth. We put together a data set on more than 300 estimates of the effect of reforms on growth (from the 43 studies listed in Appendix 1). We observe that a third of the coefficients of reform on economic performance are positive and significant, another third are negative and significant, and the final third are not statistically significantly different from zero. Figures 1–3 plot these results. Notice that the variance changes little when differences in lag structures are taken into account (this is important because although the contemporaneous effect is generally found to be negative, the lagged effect tends to be positive.) The extent of such variation of the impact of reforms suggests to us that this is indeed fertile ground for meta-regression analysis.

Meta-regression analysis (MRA) is a statistical method that gives a summary as well as a quantitative assessment of a given body of evidence (Stanley, 2001; Stanley and Jurell, 1989). In an MRA study, the dependent variable is usually a summary statistic (for instance, elasticities, *t*-values, etc.) while the independent variables often cover various features of the econometric strategy and data used in each study. MRA has been widely used despite it being a relatively new technique. In environmental economics, Florax (2002) reviews 40 meta-regression studies (mostly on pollution valuation) published since 1980. It has also been used extensively in labour economics: Card and Krueger (1995) use MRA to assess the evidence on minimum wages, Stanley and Jurell (1998) use it to evaluate that on gender wage differentials in the United States, while Ashenfelter et al. (1999) use MRA to investigate the robustness of the evidence on returns to education.<sup>1</sup> In international macroeconomics, Rose (2004) uses MRA to evaluate the evidence on the effects of currency unions on international trade, Fidrmuc and Korhonen (2006) to assess that on business cycle synchronisation, and Égert and Halpern (2006) to appraise that on equilibrium exchange rates. In this paper, we apply MRA to the econometric evidence on reform and growth.<sup>2</sup> MRA complements rather naturally a long and important stream of evaluative work in the growth literature, of which Levine and Renelt (1992) is one pivotal contribution (see

---

<sup>1</sup> Jurell and Stanley (1990) use MRA to evaluate the evidence on the union/non-union wage gap, Weichselbaumer and Winter-Ebmer (2001) to assess that on gender wage differentials across countries, and Doucouliagos (1995) to take stock of the econometric evidence on worker participation. In public finance, MRA has been used to assess the impact of tax policies (Phillips and Goss, 1995) and to evaluate econometric findings on the Ricardian equivalence (Stanley, 1998).

<sup>2</sup> In comparative economics, Djankov and Murrell (2002) use MRA to assess the empirical evidence on enterprise restructuring. Havrylyshyn (2001) provides a review of the relationship between reform and growth, but we are unaware of any MRA study of this issue.

Durlauf et al., 2006). While the objective of this evaluative work is to establish *which* variables are more or less robustly related to economic growth, MRA throws light on the main reasons *why* a given variable (or set of variables) is more or less robustly related to economic growth.

The data set we put together for this paper is based on information collected from 43 econometric studies, generating a grand total of 321 coefficients, and includes a quantification of more than 40 features of those studies, encompassing estimation method, measurement and specification (Appendix 2 provides a complete list). We investigate the sign, magnitude and significance of the (contemporaneous as well as cumulative) effect of reform on economic performance. Our findings suggest that the use of panel methods, controls for macroeconomic stabilisation and time coverage are important in explaining the variation in the estimated effects of reform on economic performance. Of particular interest is that the measurement of reform and controlling for institutions and initial conditions significantly decrease the probability of finding a positive and significant effect of reform on growth.

We should also note at the outset that here we focus on a particular body of econometric evidence on the growth-reform nexus, namely the experience of the transition economies. This is so for at least four reasons: (1) this is a group of countries for which there is a sufficiently large number of published econometric studies;<sup>3</sup> (2) these economies provide an almost natural experiment setting for the question at hand, as they started out with rather similar initial conditions but have experienced very dissimilar reform and growth trajectories (with some of them implementing reform packages on an unprecedented scale); (3) this body of evidence therefore tends to use similar measures of reform<sup>4</sup> as well as growth figures, which attenuates one potentially crucial source of bias; and (4) the studies tend to use similar (to a certain extent) econometric specifications, estimation strategies and sets of explanatory variables. Contrasting these four reasons with the variation we see in the results (Figures 1–3) supports our view that this is indeed fertile ground for meta-regression analysis.

The rest of the paper is organised as follows. The next section describes the methodological framework we use. Section 3 presents the data set we put together for this paper. Section 4 discusses our econometric approach and main findings, while Section 5 concludes with suggestions for future research.

---

<sup>3</sup> Acemoglu et al. (2006) argue that the empirical evidence on reform-growth is very scarce, with even that for the OECD countries being limited to a handful of papers.

<sup>4</sup> This simply means that the reform data used in the empirical literature is almost uniformly the same, and does not imply that we see these measures as error-free. Indeed, Campos and Coricelli conclude their survey by noting that: “more emphasis should be placed upon a better understanding of the role of economic reforms and reform strategies in dictating the path of the transition process (...) There are a number of theoretical models that stress the role of reform strategies. Yet the data for discriminating among these models is lacking. The few indicators available are unnecessarily subjective (...)” (2002, p. 831).



## 2. Methodological Framework

Meta-analysis refers to a set of statistical methods for reviewing and evaluating bodies of empirical evidence in a comprehensive and rigorous way. If a large number of studies have been carried out on a particular topic, then combining their results in a systematic manner can provide additional insights and greater explanatory power than can the more informal, narrative discussions of the individual results. MRA usually goes beyond what is often called vote-counting or head-counting (Light and Smith, 1997), in which the inference that a specific category occurs in a majority of cases is usually taken as evidence of the significance and magnitude of the “true” effect. Head-counting is neither systematic nor statistically powerful in drawing conclusions about a body of evidence. When the number of existing studies is very large, head-counting is even more likely to support misleading conclusions because the Type-II errors of the individual studies do not cancel out, but add up instead (Florax et al., 2002).

One first procedure to summarise a given body of evidence was developed by Fischer (1932). It assumes that the underlying p-values are uniformly distributed under the null hypothesis of no effect, and then proposes that minus twice the sum of the logs of the p-values follows a chi-square distribution. This approach assumes independence across studies and that each one of them is unbiased; this is clearly an important assumption which is usually addressed by estimating MRA equations with study fixed-effects so as to capture unobserved heterogeneity among findings.

It is well-established that the Fischer test is too generous in ascribing significance. Stanley and Jurell (1998) discuss three main reasons for this. First, it does not distinguish between positive and negative statistically significant effects, as both are only counted as significant. Second, the null hypothesis of the Fischer test is that none of the observations reflects a genuine effect. A finding of significance therefore does not necessarily mean that the average effect is statistically significant. Third, the assumption of unbiased estimates is often violated in the case of non-experimental evidence.

The technique that focuses on the magnitude of the effect was developed by Glass (1976), who suggests focusing on the “effect size” to compare and integrate findings. He defines the effect size as the average outcome of the treatment group minus the average outcome of the control group, divided by the standard deviation of the control group.<sup>5</sup>

A related development refers to estimating the “average” effect in order to assess its practical and statistical significance and to explain its variation among studies. Stanley (1998) and Rose (2004) compute the average (normalised) test statistic, while Djankov and Murrell (2002) use aggregate t-statistics for this purpose. One important feature of the literature on the effects of reform on growth is that different studies use different measures of stabilisation, factor inputs, initial conditions and institutional development, and thus combining estimates has to be done carefully. One way to combine results from different studies is to combine t-statistics. Djankov and Murrell

(2002) suggest aggregating t-statistics as follows:  $\bar{t} = \sum_{k=1}^M t_k / \sqrt{M}$ , where M is the total number of

---

<sup>5</sup> One common criticism of Glass’s effect size method is its estimate of the overall standard deviation. Hedges and Olkin (1985) argue that it is inappropriate and propose a pooled estimate in its stead, corrected for the degrees of freedom. They also argue that conventional methods, ANOVA in particular, are often unsuitable for analysing the effect size, as heteroscedasticity across studies can mask design differences that the meta-analysis itself is intended to investigate.

studies and  $t_1, \dots, t_M$  are t-statistics on  $\hat{\beta}$ , with  $\bar{t}$  taken as normally distributed given sufficiently large sample sizes in all analyses. Djankov and Murrell (2002) make the point that statistical tests based on this  $\bar{t}$  are more powerful than tests on individual observations, as the former provides additional information on the statistical significance of the effect.

The typical study of reform on growth estimates an equation of the form:

$$Y = \alpha + \beta Lib + \gamma Stab + \phi F + \delta IC + \phi Inst + \varepsilon \quad (1)$$

where  $Y$  is the per capita GDP growth rate,  $Lib$  is a measure of reform,  $IC$  is a measure of initial conditions (say macroeconomic and structural distortions at the beginning of the period),  $Stab$  are different measures of stabilisation (inflation, exchange rate regime, government deficit, etc.),  $Inst$  is institutional development,  $F$  are factors of production (capital and labour) and  $\varepsilon$  is the error term. Coefficient  $\beta$  represents the partial effect of reform on growth, *ceteris paribus*, and its size, sign and level of statistical significance are of central interest here.

The meta-regression equations we estimate take the form:

$$Y_i = \beta_0 + \sum \beta_k Z_{ki} + \varepsilon_i \quad (2)$$

where  $Y_i$  is the value of a summary statistic from analysis  $i$ , and  $Z_{ki}$  are  $k$  meta-independent variables. It is common practice to use estimated coefficients or the results of statistical tests (e.g. t-values) as the summary measure. In light of the very large variation in the results from the body of evidence we are interested in (Figures 1–3), we report estimates from ordered logit models in which the dependent variable captures whether a result is positive and significant, negative and significant, or not significant. More details are provided below.

One major shortcoming of MRA concerns the so-called “file drawer” problem, namely the tendency of academic journals to favour studies that report statistically significant results. Card and Krueger (1995) and Ashenfelter et al. (1999) address publication bias in their studies of minimum wage and returns to schooling, respectively (for a review, see Stanley, 2005). One potential problem in this case is the implicit assumption that working papers are not published (and will not be) because they do not contain a sufficient number of statistically significant results. One important issue in our case is that the literature on reform and growth is more recent (than, for instance, that on the minimum wage and returns to education). Therefore, we think it is more appropriate to leave a fuller investigation of the severity of publication bias for future work.<sup>6</sup>

---

<sup>6</sup> Notwithstanding these reservations, we tested for publication bias following the approach developed by Card and Krueger (1995), according to which severe publication bias is said to be absent if the coefficient of interest equals 1 (i.e., when it is positive and not statistically different from 1). For our data we find that publication bias is significantly more of a concern in the case of the cumulative effect (for which we find a negative but statistically insignificantly different from zero coefficient) than for the case of the contemporaneous effect (positive, often significant but not equal to unity slope). These results are available upon request.

### 3. Data

MRA must start with a careful search for the appropriate literature from which the observations (in this case, coefficients on the effects of reform) will be taken. We include papers in our data set if they investigate the effect of reform on growth in a transition context, if they report the coefficients on reform, if their estimates are from regression analysis, and if their t-values or standard errors are reported in full. We find 43 papers (listed in Appendix 1) which fulfil these criteria and use them as the basis for our data set.

We follow Weichselbaumer and Winter-Ebmer (2007) and include all available test statistics from each study in our meta-regression analysis. There is no clear consensus on whether to choose one estimate from each study or all of the reported estimates. Stanley (2001) proposes to choose only one estimate – the one which the author of the study indicates to be her preferred one. Alternatively, Ashenfelter et al. (1999) and Weichselbaumer and Winter-Ebmer (2007) include all the reported estimates to make full use of the existing information and to avoid arbitrary judgement on the authors' preferred results.<sup>7</sup> Here we choose to use all the reported coefficients, but as a robustness exercise we re-run all our results adding a set of study-specific dummy variables. This is in large part because in our case the authors seldom indicate which one is their preferred estimate.

We follow two complementary strategies for the construction of our dependent variable. The first strategy follows the rule of not having more than one coefficient from each reported regression. This implies that if both contemporaneous and lagged effects of reform on growth are in the original specification, then we only select the one on the contemporaneous effect. By the same token, if several alternative measures of reform are used, the default is to take the most highly significant t-value.<sup>8</sup> Our second strategy is to combine all the relevant reform coefficients from a given specification, which gives rise to the matter of how to coalesce standard errors when we do not have access to all the original data sets.<sup>9</sup>

For each of the 43 papers, the estimates of reform on growth and their corresponding meta-independent variables were collected. This procedure gave one observation in our data set per estimated coefficient for a grand total of 321 observations. We chose to capture mainly two aspects of these effects: their sign and the magnitude of their statistical significance. The sign variable is coded as a dummy variable taking the value of 1 if the sign of the coefficient is positive and zero if the sign is negative (a similar coding was used to code the sign of the cumulative effect). About 50 percent of the coefficients are signed positive, with this increasing to about 80 percent in the case of the cumulative effect.

<sup>7</sup> Djankov and Murrell (2002) and Stanley and Jarrell (1998) collect multiple estimates from the same study only if the estimates are derived from conceptually distinct analyses, i.e. different forms of the dependent variable from different countries or from different years.

<sup>8</sup> The least significant t-value is retained for the purpose of sensitivity checks. In our data, 22 out of 321 observations come from regressions with multiple estimates and are either the most or least significant t-values. Although the results below are with the 22 most significant, they do not change if we use the 22 least significant ones instead. These are available from the authors upon request.

<sup>9</sup> We compute, for one lag,  $SE\_cumul = \sqrt{(SE_{LIB(t)})^2 + (SE_{LIB(t-1)})^2}$  and, in the case of two lags,  $SE\_cumul = \sqrt{(SE_{LIB(t)})^2 + (SE_{LIB(t-1)})^2 + (SE_{LIB(t-2)})^2}$

As for the statistical significance of the effect of reform on growth, we capture it by collecting the values of the t-statistics for each of the 321 coefficients. For about 50 percent of our sample, this is simply the t-statistic of the contemporaneous coefficient of reform on growth. The remaining estimates in our sample come from regressions in which the lagged values of reform are also included or reform is measured in first-differences, that is, if the study is interested in the “speed” of reform. When the t-statistics of the joint or cumulative effect (that is, from the combined contemporaneous and lagged coefficients) are not available in the original paper, we must compute it ourselves; one way of doing this is to use the standard errors of each coefficient and take the square root of the sum of their variances. Notice, however, that because we do not have access to all original datasets, this overestimates the true cumulative effect, as it does not take into account the covariances.<sup>10</sup> The mean t-value for the direct effect of reform on growth is 0.06 and a Jarque-Bera test suggests that they are normally distributed (Figure 1), while for the cumulative effect the average t-value is 1.29, with the Jarque-Bera test also supporting normality (Figure 3).

For the sake of conciseness, we combine these two dependent variables (the dummy variable for the sign of the coefficient and the value of the t-statistic) and report ordered logit results in which the dependent variable takes one of three possible values: positive and statistically significant, negative and statistically significant, and not statistically significant.<sup>11</sup>

The meta-independent variables capture the various characteristics of the studies so as to explain the large variation we observe in their findings. We focus on three main blocs of study characteristics: *method*, *measurement* and *specification*. Under method, we are interested in, *inter alia*, general modelling features (number of observations, explanatory variables and degrees of freedom), choice of econometric technique and data features (panel or cross-section and the time period of the sample). Under measurement, we are mostly interested in the way reform is measured. And under specification, we try to capture the types and number of various control variables (Appendix 2 has a complete list of these variables).<sup>12</sup> Let us comment on each of these blocs in turn.

In terms of general model features, for each of the 321 regressions reported in the 43 studies, we collect information on the number of observations, the number of explanatory variables in each specification (including the reform variables) and on the degrees of freedom available. The average number of explanatory variables from the regressions in our sample is almost 10 and the average degrees of freedom are slightly above 127 (with standard deviations of 8 and 80 respectively). The number of explanatory variables range from 2 to 58.

In terms of econometric modelling, we create dummy variables that: take the value of 1 if the estimates are based on panel data (zero if cross-section), if fixed (country) effects are present

---

<sup>10</sup> The distribution is shown in Figure 1. We removed atypical observations (“outliers”), defined as those for which t-statistics exceeded 3 standard deviations. There were very few of them, as we found only four such observations, all from paper 26 (Appendix 1), with t-statistics equal to 16.7, 17.2, 20.4 and 21.1.

<sup>11</sup> Our baseline results are for the 10% significance level. We also experimented with 1% and 5% levels and find no qualitative changes in our results. Further, in previous versions, we reported logit equations for the sign and OLS regressions for the magnitude of the effect; again we find no qualitative changes in our results. These are available from the authors upon request.

<sup>12</sup> Notice that Appendix 2 has the full list of variables in our data set. For the sake of space, we do not report results for all of them. We should also mention that most MRA studies we are aware of collect data on a relatively small number of study characteristics and surely none of them produces as detailed and comprehensive a data set as ours, which contains 40 different potential explanatory variables.

(zero otherwise), if fixed (time) effects are present (zero otherwise), and if reform is treated as an endogenous variable (and zero otherwise). The choice of econometric modelling reflects whether the possibility of endogeneity bias is addressed. This measure serves to answer whether the assumption of exogeneity of reforms is correct, since significantly different results from OLS and 2SLS or GMM would suggest the presence of two-way causation in the growth-reform relationship. A vast majority of specifications (almost 80 percent) are estimated on panel data, with just below a third of them addressing potential endogeneity bias and even fewer making allowances for fixed effects.

As for the time windows used in the different studies, we create variables for the first year of the sample, for the last year of the sample, and for its mid-point for each of the 321 regressions. Because output dynamics differ greatly across countries over time, we also create dummy variables for all end years of the samples in each specification (which range from 1993 to 2004). In case the author did not disclose the exact end year for each specification, we assume all specifications in each paper are for data on the same time window. The median starting and ending years for our studies are 1990 and 1998, respectively. The variable coding the time period covered in a particular study (early, middle, or late) is used to try to uncover changing patterns of the significance of the effect over time.

Regarding different measures of reform and of reform dynamics, we create a series of dummy variables that take the value of 1 if the study used: the EBRD average reform index, the cumulative liberalisation index (De Melo et al., 1997), the World Bank or EBRD internal liberalisation index (prices and labour markets), the World Bank or EBRD external liberalisation index (trade and capital flows), the World Bank or EBRD privatisation index (real and financial sectors), simple average of the three World Bank or EBRD indices, whether any of these individual reform components are used one at a time, a combination of the EBRD and World Bank indices (and zero otherwise for each one of these).<sup>13</sup> In terms of measuring reform dynamics, we generate dummy variables that take the value of 1 if both contemporaneous and lagged reforms are used and if the reform measure is a measure of its “speed” or change over time. In addition, we capture whether the estimation has a lagged dependent variable (1 if it does, zero otherwise) and whether quadratic terms for reform are used (taking the value of 1 if they are used, zero otherwise). We find that about half of the specifications include both contemporaneous and lagged reforms and about a quarter use speed as the preferred measure of reform.<sup>14</sup>

Finally, regarding specification choice, we collect information on whether or not the reported specification includes variables for macroeconomic stabilisation (as well as their actual number), and in similar fashion for initial conditions, institutional development and factors of production. We also construct measures of whether or not the results are reported separately for the former

---

<sup>13</sup> There are large literatures assessing the effect of specific reforms. These are excluded from our study because they do not investigate more than one reform and/or they focus on individual countries. One excellent case in point is the literature on privatisation (authoritative reviews are provided by Megginson and Netter, 2001, and, for the specific case of the transition economies, by Zinnes, Eilat and Sachs, 2001, and Hanousek, Kocenda and Svejnar, 2007). See also Roland (2000) and Rozelle and Swinnen (2004) for a discussion of the related theoretical literature.

<sup>14</sup> Also note that all the studies in Appendix 1 focus on so-called first generation reforms (stabilisation, liberalisation and privatisation) but this is not because we do not believe that second generation reforms (e.g. institutional and regulatory changes) are important; we simply do not know of any econometric study that focuses on the latter type.

Soviet Union countries (split-sample analysis), for whether or not initial conditions are proxied by the De Melo et al. (1997) principal components indexes, for whether inflation is the stabilisation measure used, for whether the study measures underreported output,<sup>15</sup> and for whether the study separates the effect of reform on the public and private sectors. Because approximately half of our coefficients come from authors whose main affiliations are not academia (and for multiple authors, in all cases they share the same type of affiliation), we also create a dummy variable for this characteristic.<sup>16</sup>

## 4. Econometric Results

Despite the large econometric literature on the effects of economic reform on economic growth during the transition from plan to market, the extent and depth of the divergence among results is almost bewildering. As noted, any casual or informal attempt to take stock of the lessons from this literature may be doomed from the start: a third of the large number of existing estimates are positive and significant, another third are negative and significant, and the final third are not statistically different from zero. It is our view that MRA can be very useful in this situation. In this section we present and discuss our results. We choose to organise this presentation in terms of three principal (potential) explanations we offer for the existing divergence, namely we investigate whether differences in (a) methods, (b) measurement and (c) choice of specification are the main culprits. In what follows we report ordered logit results that differentiate between statistically significant and positive, statistically significant and negative, and not statistically significant effects.

From our sample of 43 studies (Appendix 1), the values of the 317 normalised t-test statistics range from -9.80 to 10.67, with mean 0.06 and standard deviation 3.64. As noted, the aggregate test statistic is  $\bar{t} = \sum_{k=1}^M t_k / \sqrt{M} = 1.138$ , which is not statistically significant at conventional levels

(that is, the average effect of reform on growth in transition economies seems not to be significantly different from zero). Yet this descriptive statistic cannot represent such a diverse literature. Relying only on average test statistics, we should refrain from inferring that there is no strong relationship between growth and reform and, more importantly, this does not allow us to say much about the reasons for this divergence.

### 4.1 Determinants of the Sign and Statistical Significance of the Reform Effect

Our meta-regression model takes the form of the following ordered logit model:

$$\Pr(S_i = j | Z_i, \beta_j) = e^{z_i \beta_j} / (1 + \sum_{j=-1}^1 e^{z_i \beta_j}) \quad i = 1, 2, \dots, M \quad (3)$$

---

<sup>15</sup> Official GDP figures for the years immediately following 1989 are widely believed to be biased because statistical offices were not equipped to measure output from small private firms and because prices were liberalised at different speeds.

<sup>16</sup> This is not uncommon in MRA. For instance, Fidrmuc and Korhonen (2006) find that central bankers' estimates of business cycle correlation tend to be significantly more conservative (lower) than academicians'. Our prior in this case is that academicians' estimates will probably be lower than those from non-academicians, as suggested by the much more divided views among the former than among the latter.

where  $S_i$  is a categorical variable capturing the sign and significance of the reform effect (it equals one if the effect is positive and significant, zero if insignificant, and minus one if negative and significant),  $Z_i$  is a vector of study characteristics (following the method-measurement-specification scheme as listed in Appendix 2),  $M$  is the number of estimates from the empirical literature (listed in Appendix 1) and  $\beta_i$  is a vector of meta-regression coefficients which reflect the effect of particular characteristics of the original study on the reform effect.

### ***The Role of Method***

The results in Table 1 refer to our explanation of the divergence of results in terms of various aspects of the choice of econometric *method* in each study. They suggest that the higher the number of degrees of freedom (DF) in the original study or the larger the number of observations, the less likely it will be that we will find a positive and significant relationship between reform and growth. We also find some evidence that studies conducted by academicians (AUTHAFF), as opposed to non-academicians, are less likely to support a positive and significant reform-growth relationship. The use of country-specific dummies (FIXED) is found to increase the probability of finding a positive reform-growth relationship, as opposed to the use of panel data (PANEL), which tend to decrease this probability.

**Table1: The Determinants of the Reform-growth Effect: The Role of Method**

	(1)	(2)	(3)	(4)	(5)
DF	-0.00245* [0.0013]	-0.0031 [0.0023]	-0.00402*** [0.0013]	-0.00319 [0.0023]	
AUTHAFF		-0.636*** [0.23]	-0.559** [0.24]	-0.618** [0.26]	-0.588*** [0.22]
PANEL		-0.57 [0.37]		-0.6 [0.37]	-0.888*** [0.20]
FIXED		1.106*** [0.40]		1.142*** [0.42]	0.944** [0.38]
ENDO		0.473* [0.26]		0.514* [0.27]	
MID			-0.101 [0.079]	-0.145** [0.073]	
EARLY			-0.329 [0.32]	-0.673** [0.32]	
LATE			0.678** [0.33]	0.461 [0.34]	
Observations	317	317	317	317	317
Chi2	3.564	25.93	20.96	31.89	26.25
Pseudo R2	0.00526	0.0403	0.0242	0.047	0.0339

**Notes:** Estimation was carried out using ordered logit, with heteroscedasticity-consistent standard errors reported in brackets. Dependent variable takes the value of -1 if the coefficient of reform on growth is negative and statistically significant at 10%, 0 if the coefficient is not statistically significant, and 1 if the coefficient is positive and statistically significant at 10%.

DF is degrees of freedom, AUTHAFF is author's affiliation (1 if non-academic, zero otherwise), PANEL is a dummy variable that takes the value of 1 if the reform-growth coefficient is from panel data, FIXED is a dummy variable that takes the value of 1 if country-specific dummy variables are included, ENDO is 1 if there is an attempt to deal with endogeneity bias (zero otherwise), MID refers to the mid-point of the time window, EARLY and LATE refer to the time windows used for estimation (1989–1993 and 1999–2004, respectively).

\*\*\*, \*\*, and \* denote significance at 1%, 5% and 10% levels respectively.

A number of authors (among others, Heybey and Murrell, 1997; Kruger and Ciolko, 1997; Wolf, 1999; Berg et al., 1999; Fidrmuc, 2001; Falcetti et al., 2002; Staehr, 2003; and Merlevede, 2003) recognise the problem of the potential endogeneity of reform vis-à-vis economic growth and address this by instrumental variables, three-stage least squares, etc. Our meta-regression analysis reveals that those studies that treat reform as endogenous (ENDO=1) are more likely to yield a positive and statistically significant reform effect (Table 1, column 2). However, this result is not robust to the inclusion of other controls. The impact of reforms on growth is likely to increase over time, as suggested by statistically significant coefficients on the LATE variable (Table 1, column 3). Nonetheless, the inclusion of other controls also makes this effect insignificant.

In summary, three method-related characteristics – AUTHAFF, PANEL and FIXED – which appeared to be significant in determining the sign and significance of the reform effect, are taken as our first set of results.

### ***The Role of Measurement***

The next set of factors we appraise is the way economic reform and its dynamics are measured. In this respect, we distinguish the origin of the index (whether it was developed by the World Bank, EBRD, or a combination of both) and the nature of the index (internal or external liberalisation, privatisation, their average, and the marginal effect of each of them if other measures are also accounted for).

The results in Table 2 show that measuring reform by the EBRD index does not seem to significantly affect the sign of the reform impact on growth performance. Yet, there is some evidence that use of the World Bank's Cumulative Liberalisation Index increases the probability of finding a positive and significant effect of reform on growth, although this finding is not robust to the inclusion of other controls.

Among the three main types of reform, the only one that is statistically significant and robust is that referring to external liberalisation (LIE), which systematically shows a positive impact on growth. Note that this effect holds even if the remaining components are included in the meta-regression. Further, and not entirely surprisingly, if reform is measured by the average of the three main components (LII, LIE and LIP), the resulting effect is likely to be positive (Table 2, column 3), although this effect becomes insignificant when other controls are added. Surprisingly, the privatisation measure (LIP) seems to be negatively associated with economic growth (but as can be seen in the table, this effect is not robust).

The inclusion of lagged values of reform (Table 2, column 6) is one common way of dealing with dynamics in this context. We find that it increases the probability of the effect of reform on growth being negative and significant, and similarly with the use of speed as the measure of reform. This finding in a sense supports the “no pain, no gain” view. The effect of structural reforms seems to occur over a longer period of time, and reforms have initial costs which seem to be offset in subsequent years. Conversely, cross-sectional estimates based on average liberalisation measures over several years (or yearly estimates measuring only the contemporaneous effect of reform) tend to report a positive effect of reforms on economic performance.



**Table 2: The Role of the Measurement of Reform and Reform Dynamics**

	(1)	(2)	(3)	(4)	(5)	(6)	(7)	(8)
AUTHAFF	-0.66*** [0.22]	-0.54** [0.23]	-0.56** [0.22]	-0.351 [0.24]	-0.39 [0.24]	-0.32 [0.26]	-0.46* [0.27]	
PANEL	-0.60*** [0.22]	-0.88*** [0.21]	-0.81*** [0.20]	-0.83*** [0.21]	-0.81*** [0.21]	0.81** [0.40]	1.11** [0.44]	1.23*** [0.35]
FIXED	0.89** [0.39]	0.95** [0.38]	0.92** [0.39]	1.07*** [0.40]	1.04*** [0.39]	0.34 [0.38]	0.3 [0.36]	
CLI	1.23*** [0.33]						0.56 [0.44]	
EBRD		-0.13 [0.22]					0.48* [0.27]	
AV			0.44* [0.26]				0.81 [0.54]	
LIE				1.51** [0.61]	1.86** [0.84]		4.83*** [1.45]	4.42*** [1.41]
LII				-0.85** [0.42]	-0.69 [0.43]		0.093 [0.91]	
LIP				-1.03*** [0.37]	-0.88** [0.40]		0.26 [0.73]	
MARGEFF					-0.491 [0.56]		-1.35 [0.86]	-1.85** [0.78]
SPEED						-1.19*** [0.39]	-1.12** [0.44]	-1.12*** [0.42]
LAGS						-3.15*** [0.40]	-3.67*** [0.42]	-3.73*** [0.40]
Observations	317	317	317	317	317	317	317	317
Chi2	44.38	27.58	31.23	48.34	49.3	147.8	146.8	134.8
Pseudo R2	0.0472	0.0344	0.0386	0.0652	0.0665	0.265	0.323	0.311

**Notes:** Estimation was carried out using ordered logit, with heteroscedasticity-consistent standard errors reported in brackets. Dependent variable takes the value of -1 if the coefficient of reform on growth is negative and statistically significant at 10%, 0 if the coefficient is not statistically significant, and 1 if the coefficient is positive and statistically significant at 10%.

AUTHAFF is author's affiliation (1 if non-academic, zero otherwise), PANEL=1 if the reform-growth coefficient is from panel data, FIXED=1 if country-specific dummy variables are included, CLI=1 if the cumulative liberalisation index from the World Bank is used as a reform measure, EBRD=1 if the reform index originates from the EBRD, AV=1 if average (simple or weighted, or simple sum) of reform indices LIE, LII or LIP was used; LIE, LII and LIP refer to external liberalisation; internal and/or price liberalisation, and privatisation and banking reform, respectively; MARGEFF=1 if LII, LIE, LIP are used jointly; SPEED=1 if speed is the measure of reform, LAGS=1 if both contemporaneous and lagged reform variables are used.

\*\*\*, \*\*, and \* denote significance at 1%, 5% and 10% levels respectively.

Notice that when reform measures and controls for dynamics are considered together, the estimated impact of the use of panel data (as opposed to cross-section) changes the sign to positive and is significant (Table 2, columns 6–8). Also, controls for fixed effects and author affiliation lose their impact in explaining the significance of the reform effect.

Column 8 in Table 2 shows our summary specification so far. Overall, five study characteristics (namely, PANEL, LAGS, SPEED, LIE and MARGEFF) turn out to be important in explaining the variation in sign and significance of the reform effect on growth among the 43 studies we identified.

***The Role of Specification***

The next set of variables we consider are aimed at investigating how the choice of specification in the original study, in particular the inclusion of specific sets of control variables, affects the reform effect. We thus pay special attention to (a) the inclusion of controls for initial conditions, stabilisation, institutional development and factor inputs, (b) correcting for the possibility of underreported output, (c) accounting for former Soviet Union membership, and (d) controlling for the differential public-private sector effect.

***Table 3: The Role of the Choice of Econometric Specification***

	(1)	(2)	(3)	(4)	(5)	(6)	(7)	(8)	(9)
PANEL	1.26*** [0.35]	2.08*** [0.43]	1.10*** [0.36]	1.23*** [0.35]	1.24*** [0.35]	1.24*** [0.35]	1.234*** [0.35]	2.19*** [0.48]	2.04*** [0.48]
LIE	4.49*** [1.44]	4.32*** [1.39]	4.27*** [1.37]	4.42*** [1.43]	4.42*** [1.41]	4.42*** [1.41]	4.406*** [1.56]	4.24*** [1.60]	4.27*** [1.39]
MARGEFF	-1.97** [0.78]	-1.84** [0.77]	-1.92*** [0.73]	-1.85** [0.79]	-1.85** [0.78]	-1.85** [0.78]	-1.859** [0.77]	-2.24*** [0.77]	-2.06*** [0.74]
LAGS	-3.68*** [0.40]	-3.81*** [0.39]	-3.53*** [0.42]	-3.73*** [0.40]	-3.73*** [0.40]	-3.73*** [0.41]	-3.73*** [0.40]	-3.62*** [0.42]	-3.59*** [0.41]
SPEED	-1.09*** [0.42]	-1.16*** [0.43]	-1.30*** [0.41]	-1.13*** [0.41]	-1.12*** [0.42]	-1.12*** [0.43]	-1.12*** [0.43]	-1.34*** [0.42]	-1.29*** [0.42]
IC	-0.45 [0.30]							-0.62** [0.29]	-0.54* [0.29]
STABIL		-1.16*** [0.43]						-1.36*** [0.47]	-1.21*** [0.47]
INST			-0.87*** [0.30]					-0.82*** [0.31]	-0.77** [0.30]
FACT				0.021 [0.36]				0.31 [0.38]	
FSU					-0.050 [0.71]			-0.57 [0.89]	
UNDERREP						-0.272 [1.16]		-0.70 [1.09]	
PUBPR							0.0365 [1.00]	0.24 [0.99]	
Obs.	317	317	317	317	317	317	317	317	317
Chi2	134	151.6	154.4	135.1	135.2	138.2	135.7	169.7	164.7
Pseudo R2	0.314	0.323	0.321	0.311	0.311	0.311	0.311	0.338	0.335

**Notes:** Estimation was carried out using ordered logit, with heteroscedasticity-consistent standard errors reported in brackets. Dependent variable takes the value of -1 if the coefficient of reform on growth is negative and statistically significant at 10%, 0 if the coefficient is not statistically significant, and 1 if the coefficient is positive and statistically significant at 10%.

PANEL takes the value of 1 if the reform-growth coefficient is from panel data (zero otherwise); LIE=1 if the external liberalisation index was used as a reform measure, MARGEFF=1 if LII, LIE, LIP are used jointly; LAGS=1 if both contemporaneous and lagged reform variables are used; SPEED=1 if speed is the measure of reform; IC, STABIL, INST refer to controls for initial conditions, stabilisation and institutional development, respectively; FACT=1 if controlled for factors of production, FSU=1 if the results are reported separately for FSU countries, UNDERREP=1 if the study deals with underreported output.

\*\*\*, \*\*, and \* denote significance at 1%, 5% and 10% levels respectively.

We find that simultaneously controlling for initial conditions, macroeconomic stabilisation and institutions significantly decreases the probability of finding a positive and significant impact of reform (Table 3, column 9). Note that these effects remain when other control variables are included (Table 3, column 8). We find that controlling for being a former Soviet Union country (split sample) does not seem to change the estimated reform effect (Table 3, column 5). We also find that the effect does not seem to depend on accounting for traditional factors of production, for the public sector or underreported output (Table 3, columns 4, 6 and 7).

In summary, eight study characteristics are deemed important in explaining the sign and significance of the reform effect (see Table 3, column 9), namely, the use of: panel data, lagged reform, speed of reform, external liberalisation, multiple reforms, controls for institutions, initial conditions and stabilisation. We checked all our results for multicollinearity. The highest Variance Inflation Factor (VIF) we found was 5.18, which is considerably below the standard cut-off value of 10, suggesting that multicollinearity is not a severe problem in our estimations.

### *Sensitivity Checks*

Our estimation strategy, which is based on the sequential principle *method-measure-specification*, could be potentially sensitive to the order of inclusion of the blocs of variables. For example, one may argue that the final equation of the first bloc – *method* – is mis-specified by construction since it does not account for other (significant) explanatory variables added in the next two stages, *measurement* and *specification*. To address this issue, we perform an additional sensitivity check which consists of testing which starts from a general specification encompassing all explanatory variables, and then excluding the least significant variables one by one.

The final specification obtained from such a general-to-specific selection strategy is shown in Table 4, column 1. We end up with essentially the same specification as above. The only exception is that now two more explanatory variables are significant: EARLY and LATE, suggesting that the impact of reforms on growth is likely to increase over time. Overall, our final specification includes 10 significant characteristics, explaining 36% of the variation in the data (these are as follows: EARLY, LATE, PANEL, LAGS, SPEED, LIE, MARGEFF, IC, INST, STAB).

Since multiple estimates from the same study are used in our meta-regression equations, we try to deal with the potential problem of biased sampling by including dummy variables for each study. In the resulting specification, we find that 22 study dummies are significant, indicating higher than conditional average probability to report a positive reform effect in 12 studies and a lower probability in 10 studies. More importantly, study dummies do not affect our main meta-regression results, as none of the 10 study characteristics loses significance (Table 4, column 2).<sup>17</sup> We thus conclude that our results do not seem affected by biased sampling and that the use of multiple estimates from the same study is valid in this respect.

<sup>17</sup> The coefficients of the study dummies are not shown but are available from the authors upon request.

**Table 4: The Determinants of the Reform Effect: Sensitivity Checks**

	(1) <sup>a</sup>	(2) <sup>b</sup>
<i>Method</i>		
PANEL	1.896*** [0.47]	2.737*** [0.62]
EARLY	-0.946*** [0.36]	-0.926** [0.44]
LATE	0.916** [0.36]	0.708* [0.40]
<i>Measurement</i>		
LIE	4.723*** [1.46]	3.624*** [1.37]
MARGEFF	-2.175** [0.85]	-1.192* [0.72]
LAGS	-3.592*** [0.41]	-3.216*** [0.48]
SPEED	-1.557*** [0.49]	-1.819*** [0.49]
<i>Specification</i>		
IC	-0.629** [0.30]	-0.725* [0.43]
STABIL	-1.225*** [0.45]	-1.832*** [0.66]
INST	-1.219*** [0.30]	1.090* [0.61]
Obs.	317	317
Chi2	170.2	42064
Pseudo R2	0.359	0.496

**Notes:** a *Method-measurement-specification* estimated at once, final specification.

b Estimated with 42 study dummies (not shown). 22 dummies are significant, out of which 12 are positive and 10 are negative.

Estimation was carried out using ordered logit, with heteroscedasticity-consistent standard errors reported in brackets. Dependent variable takes the value of -1 if the coefficient of reform on growth is negative and statistically significant at 10%, 0 if the coefficient is not statistically significant, and 1 if the coefficient is positive and statistically significant at 10%.

PANEL is a dummy variable that takes the value of 1 if the reform coefficient is from panel data (zero otherwise), EARLY and LATE refer to the time windows used for estimation (1989–1993 and 1999–2004, respectively), LIE=1 if external liberalisation components were used as a reform measure, MARGEFF=1 if LII, LIE, LIP are used jointly, LAGS=1 if both contemporaneous and lagged reform variables are used, SPEED=1 if speed is the measure of reform, IC, STABIL, INST refer to the controls for initial conditions, stabilisation and institutional development, respectively.

\*\*\*, \*\*, and \* denote significance at 1%, 5% and 10% levels respectively.

## 4.2 Determinants of the Sign and Statistical Significance of the Cumulative Reform Effect

Now we turn to the discussion of the cumulative reform effect. Similar to the analysis above of the determinants of the reform effect, the factors responsible for the variance in the sign and significance of the cumulative reform are assessed using the same blocs of study characteristics, namely, *method-measurement-specification*. Then, an alternative *general-to-specific strategy* is applied. The results from ordered logit estimations with heteroscedasticity-consistent standard errors are reported in Table 5.

As noted, a number of studies consider reform dynamics, which prompted us to incorporate this aspect into our MRA. Note that in the case of the cumulative effect, the regression sample contains a lower number of observations (220) and fewer variables are present in the final specifications for the (cumulative) effect of reform on growth. The determinants we find significant are (with their impact on the probability of finding a positive and significant reform effect in parentheses): controls for endogeneity (negative), average of internal and external liberalisation and privatisation (positive), external liberalisation (positive), marginal effects if internal and external liberalisation and privatisation are used one at a time (negative), control for lags (positive), initial conditions (negative), institutions (negative) and macroeconomic stabilisation (negative).

**Table 5: The Determinants of the Cumulative Reform Effect**

	(1) <sup>a</sup>	(2) <sup>b</sup>
<i>Method</i>		
ENDO	-1.819*** [0.44]	-2.256*** [0.71]
<i>Measurement</i>		
LIE	1.688** [0.75]	3.353** [1.58]
MARGEFF	-1.909*** [0.64]	-1.861** [0.92]
AV	1.896*** [0.48]	4.386*** [1.08]
LAGS	1.612*** [0.52]	2.331*** [0.78]
<i>Specification</i>		
IC	-1.624*** [0.54]	-1.670* [0.99]
STABIL	-0.990** [0.48]	-1.21 [0.75]
INST	-0.802** [0.36]	-1.184*** [0.45]
Obs.	220	220
Chi2	45.45	18673
Pseudo R2	0.199	0.467

**Notes:** a *Method-measurement-specification* estimated at once, final specification.

b Estimated with 30 study dummies (not shown). 14 dummies are significant, out of which 8 are positive and 6 are negative.

Estimation was carried out using ordered logit, with heteroscedasticity-consistent standard errors reported in brackets. Dependent variable takes the value of -1 if the cumulative effect of reform on growth is negative and statistically significant at 10%, 0 if it is not statistically significant, and 1 if it is positive and statistically significant at 10%.

ENDO is a dummy variable that takes the value of 1 if the model used is 2SLS, 3SLS or GMM (zero otherwise), LIE=1 if external liberalisation components were used as a reform measure, MARGEFF=1 if LII, LIE, LIP are used jointly, AV=1 if average (simple or weighted, or simple sum) of reform measures LIE, LII or LIP was used, LAGS=1 if both contemporaneous and lagged reform variables are used, IC=1 if controlled for initial conditions, STABIL=1 if controlled for stabilisation, INST=1 if controlled for institutional development.

\*\*\*, \*\*, and \* denote significance at 1%, 5% and 10% levels respectively.

Like the results presented above for the non-cumulative effect, controlling for institutions, initial conditions and stabilisation is associated with a lower probability of finding a positive and significant impact of reforms on growth. Also, the control for internal and external liberalisation and privatisation's marginal effects leads to a lower impact of reforms, while the use of external liberalisation increases the probability of a positive effect.

Unlike in the case of the non-cumulative effect, the inclusion of lagged values of reform decreases the probability of the cumulative effect being negative. In other words, the longer the period over which the cumulative effect is calculated, the higher is the probability of finding a positive impact of reforms on growth. Yet, in the case of the cumulative effect, there seems to be little evidence that controlling for the time coverage matters for the relationship between reform and growth. Column 1 in Table 5 presents our baseline model, where eight study characteristics are found to be significant, explaining 20% of the variation in test statistics.

An assessment of the problem of biased sampling was carried out by estimating the above meta-regressions with study dummy variables (Table 5, column 2). We find that 14 study dummies are significant, indicating a higher than conditional average sign and significance level of the reform effect in eight studies and a similarly lower effect in six studies. Overall, the study dummies have a minor effect on our meta-regression results. Out of eight variables, only one (STAB) loses its significance, being just slightly below the 10% significance level (significant at 10.7%). The remaining seven study characteristics retain their significance. On this basis, therefore, biased sampling should not be a serious problem here.

### **4.3 Discussion of Additional Sensitivity Checks**

The results above try to explain the variance of 317 coefficients from regressions of growth on reform, using the 10% cut-off level to define the dependent variable, the sign and significance of the reform effect. One first concern is that 22 out of these 317 are regressions with multiple reform terms. As noted, the results presented above refer to the case in which those 22 most significant t-values were selected. One first sensitivity check was to see whether our results change when the 22 *least* significant t-values are employed instead.<sup>18</sup> Overall, the results we obtain are very similar to those reported here.

With respect to the choice of the significance level, we investigate whether a 5% cut-off level would make a difference. Again, we experimented with the 22 *most* and *least* significant t-values, and with contemporaneous versus cumulative reform effects. The results for the reform effect and the cumulative reform effect are qualitatively similar to those reported.

Finally, in previous versions of the paper we experimented with an alternative coding of the dependent variable, namely using separately the absolute values of the t-statistics and the sign of the reform effect (either negative or positive, not distinguishing the insignificant estimates). Similarly, we tried the 22 *most* and *least* significant t-values and the cumulative effect. The results are in line with the findings discussed above and are not reported for the sake of space (they are available upon request).

---

<sup>18</sup> These results are available upon request from the authors.

## 5. Conclusions

The objective of this paper is to summarise and evaluate the existing econometric evidence on the effect of structural reforms on economic growth. The quantitative analysis is carried out through recently developed meta-regression analysis techniques. We put together a unique data set covering more than 300 estimates of the effect of reform on growth from more than 40 different econometric studies. Overall, the direction of the effect of structural reforms on economic performance and its statistical significance is sensitive to the specification, modelling choice, as well as various important sources of omitted variable bias (notably, on the latter, institutions and initial conditions). The use of lagged reform measures shows that reforms have negative contemporaneous effects which can be offset by positive effects in subsequent periods, after some level of reform is in place. The estimated relationship between reform and growth seems to change over time. We also find that the existing results are sensitive to the choice of the measure of reform used.

The results of our meta-regression analysis illustrate that ignoring the problem of endogeneity of reforms vis-à-vis growth seems to lead to severely biased results. Our findings suggest that the use of panel methods and the time coverage are important in explaining the variation in the estimated effects. Further, the one aspect of reform packages that seems to receive overwhelming support in our data is the liberalisation of trade and capital flows (that is, external liberalisation). Of particular interest is the finding that controlling for institutions and initial conditions appears to be very effective in decreasing the probability of finding a large and positive effect of reform on growth.

The findings of this paper also help us identify suggestions for future research. We focus on the following three: (1) Considerably more attention should be paid to measurement issues. There are well-known and severe measurement problems both with respect to GDP and with respect to economic reforms. As for GDP growth, the official data seems to underestimate the participation of the nascent private sector (in some cases because of large informal sectors) and overestimate that of the public sector (mostly, if not entirely, formal activities). With respect to reform, the existing measures are mostly subjective, difficult to replicate and tend not to reflect reform reversals (Campos and Horvath, 2006). In more concrete terms, it is somewhat surprising that we were not able to find a single study that pays explicit attention to the problem of errors-in-variables. Therefore, studies that try to deal with this matter in the future will certainly make an important contribution. (2) Our findings suggest that the use of measures of external liberalisation is central in understanding growth rates, yet almost no study we examine attempts to investigate how this reform interacts (or fails to interact) with other reforms such as privatisation and labour market and price liberalisation. Recall that the backdrop for this failure is a theoretical literature in which the issue of the sequencing of reforms looms large and a policy debate in which the big-bang versus gradualism options are discussed, as this paper demonstrates, without much robust underlying econometric evidence. Therefore more attention to the issue of reform sequencing and interactions among reforms should also generate a genuine contribution in future work. (3) Efforts could also be made in terms of making explicit the theoretical framework guiding the econometric analysis. In very few of the studies reviewed above can one identify concerns in this respect. This translates into econometric analyses that are seldom structural, a feature that can be seen by the fact that the majority of the studies reviewed discuss economic growth while presenting evidence

based on annual data. Because we now have more than 15 years of data available, it is perhaps high time to improve upon this aspect.

Several policy implications also follow from our study. First, as highlighted in Figures 1–3, there is high variation in both the sign and the significance of the effect of structural reforms on growth. Since reforms are ultimately in the hands of policymakers, it is vital to improve understanding of how structural reforms influence economic growth. In particular, a better understanding of the reasons why the long-run impact of reforms on growth tends to be positive while in the short run it seems to have non-negligible costs, and the role institutions play in this asymmetry, would be particularly welcome. Second, our meta-regression results suggest that the initial costs of reforms depend on the type of reform. For example, considerably higher costs are associated with privatisation and internal liberalisation (i.e., prices and labour markets) than with external liberalisation (of trade and capital flows) and this seems to be irrespective of whether the World Bank or EBRD indexes are used. Lastly, those building conventional and dynamic macro models should try to account for structural reforms, though there is already some research in this direction, namely Ernst et al. (2006), who explore the impact of structural reforms on the short-term macroeconomic performance in 15 OECD countries using a dynamic intertemporal model with nominal and real rigidities.



## References

- ACEMOGLU, D., JOHNSON, S. AND ROBINSON, J. A. (2006): "Institutions as the Fundamental Cause of Long-Run Growth," in P. Aghion and S. Durlauf (eds.) *Handbook of Economic Growth*, Elsevier.
- ASHENFELTER, O., HARMON, C. AND OOSTERBEEK, H. (1999): "A Review of Estimates of the Schooling/Earnings Relationship, with Tests for Publication Bias," *Labour Economics*, 6, pp. 453–70.
- CAMPOS, N. AND CORICELLI, F. (2002): "Growth in Transition: What We Know, What We Don't, and What We Should," *Journal of Economic Literature*, 40 (3), pp. 793–836.
- CAMPOS, N. AND HORVATH, R. (2006): "Reform Redux: Measurement, Determinants and Reversals," *IZA Discussion Paper*, No. 2093: Bonn.
- CARD, D. AND KRUEGER, A. B. (1995): "Time-Series Minimum Wage Studies: A Meta-Analysis," *American Economic Review*, 85, pp. 238–43.
- DJANKOV S. AND MURRELL, P. (2002): "Enterprise Restructuring in Transition: A Quantitative Survey," *Journal of Economic Literature*, 40(3), pp. 736–92.
- DOUCOULIAGOS, C. (1995): "Worker Participation and Productivity in Labor-Managed and Participatory Capitalist Firms: A Meta-Analysis," *Industrial and Labor Relations Review*, 49/1, pp. 58–77.
- DURLAUF, S., JOHNSON, P. AND TEMPLE, J. (2006): "Growth Econometrics," in P. Aghion and S. Durlauf (eds.) *Handbook of Economic Growth*, North-Holland.
- ÉGERT, B. AND HALPERN, L. (2006): "Equilibrium Exchange Rates in Central and Eastern Europe: A Meta-Regression Analysis," *Journal of Banking and Finance*, 30(5), pp. 1359–74.
- ERNST, E., GONG, G., SEMMLER, W. AND BUKEVICIUTE, L. (2006): "Quantifying the Impact of Structural Reforms," *ECB Working Paper*, No. 666, August.
- FIDRMUC, J. AND KORHONEN, I. (2006): "Meta-Analysis of the Business Cycle between the Euro Area and the CEECs," *Journal of Comparative Economics*, 34(3), pp. 518–37.
- FISCHER R. A. (1932): "Statistical Methods for Research Workers," 4th ed. London: Oliver and Boyd.
- FLORAX, R. J. G. M. (2002): "Meta-Analysis in Environmental and Natural Resource Economics: The Need for Strategy, Tools and Protocol," Department of Spatial Economics, Free University, Amsterdam.
- FLORAX, R. J. G. M., DE GROOT, H. L. F. AND DE MOOIJ, R. A. (2002): "Meta-Analysis: A Tool for Upgrading Inputs of Macroeconomic Policy Models," *Tinbergen Institute Discussion Paper*, No. TI 041/3.
- GLASS, G. V. (1976): "Primary, Secondary, and Meta-Analysis of Research," *The Educational Researcher*, 10, pp. 3–8.

- HANOUSEK, J., KOCENDA, E. AND SVEJNAR, J. (2007): "Origin and Concentration: Corporate Ownership, Control and Performance in Firms after Privatization," *The Economics of Transition*, 15(1), pp. 1–31.
- HAVRYLYSHYN, O. (2001): "Recovery and Growth in Transition: A Decade of Evidence," *IMF Staff Papers*, 48, Special Issue.
- HEDGES, L. V. AND OLKIN, I. (1985): *Statistical Methods for Meta-Analysis*, Orlando: Academic Press.
- JURRELL, S. B. AND STANLEY, T. D. (1990): "A Meta-Analysis of the Union-Non-Union Wage Gap," *Industrial and Labor Relations Review*, 44/1, pp. 54–67.
- LEVINE, R. AND RENELT, D. (1992): "A Sensitivity Analysis of Cross-Country Growth Regressions," *American Economic Review*, 82(4), pp. 942–63.
- LIGHT, R. J. AND SMITH, P. V. (1997): "Accumulating Evidence: Procedures for Resolving Contradictions Among Different Research Studies," *Harvard Educational Review*, 41, pp. 429–71.
- MEGGINSON, W. AND NETTER, J. (2001): "From State to Market: A Survey of Empirical Studies on Privatization," *Journal of Economic Literature*, 39(2), pp. 321–89.
- PHILLIPS, J. M. AND GOSS, E. P. (1995): "The Effect of State and Local Taxes on Economic Development: A Meta-Analysis," *Southern Economic Journal*, 62/2, pp. 320–33.
- ROLAND, G. (2000): *Transition and Economics: Politics, Markets and Firms*. Cambridge, MA: MIT Press.
- ROSE, A. K. (2004): "A Meta-Analysis of the Effect of Common Currencies on International Trade," *NBER Working Paper*, No. 10373.
- ROZELLE, S. AND SWINNEN J. (2004): "Success and Failure of Reforms: Insights from Transition Agriculture," *Journal of Economic Literature*, 42(2), pp. 404–56.
- STANLEY, T. D. (1998): "New Wine in Old Bottles: A Meta-Analysis of Ricardian Equivalence," *Southern Economic Journal*, 64, pp. 713–27.
- STANLEY, T. D. (2001): "Wheat From Chaff: Meta-Analysis as Quantitative Literature Review," *Journal of Economic Perspectives*, 15/3, pp. 131–50.
- STANLEY, T. D. (2005): "Beyond Publication Bias," *Journal of Economic Surveys*, 19(3), pp. 309–45.
- STANLEY, T. D. AND JURRELL, S. B. (1998): "Gender Wage Discrimination Bias? A Meta-Regression Analysis," *Journal of Human Resources*, 33/4, pp. 947–73.
- STANLEY, T. D. AND JURRELL, S. B. (1989): "Meta-Regression Analysis: A Quantitative Method of Literature Surveys," *Journal of Economic Surveys*, 3, pp. 54–67.
- WEICHSELBAUMER, D. AND WINTER-EBMER, R. (2007): "The Effects of Competition and Equal Treatment Laws on the Gender Wage Differentials," *Economic Policy*, 50, pp. 237–87.
- ZINNES, C., EILAT, Y. AND SACHS, J. (2001): "The Gains from Privatization in Transition Economies: Is 'Change of Ownership' Enough?" *IMF Staff Papers*, 48, Special Issue.

## Appendix 1

### Econometric studies of the effect of structural reforms on economic growth

- ABED, GEORGE T. AND HAMID R. DAVOODI (2000): "Corruption, Structural Reforms, and Economic Performance in the Transition Economies," *IMF WP*, No. 00/132.
- AHRENS, JOACHIM AND MARTIN MEURERS (2002): "How Governance Affects the Quality of Policy Reform and Economic Performance: New Evidence for Economies in Transition," *Journal of Institutional Innovation, Development and Transition*, 6, pp. 35–56.
- ÅSLUND, ANDERS, PETER BOONE AND SIMON JOHNSON (1996): "How to Stabilize: Lessons from Post-Communist Countries," *Brookings Papers on Economic Activity*, 1, pp. 217–91.
- AZIZ, JAHANGIR AND ROBERT F. WESCOTT (1997): "Policy Complementarities and the Washington Consensus," *IMF WP*, No. 97/118.
- BECK, THORSTEN, AND LUC LAEVEN (2006): "Institution Building and Growth in Transition Economies," *Journal of Economic Growth*, 11(2), pp. 157–86.
- BERG, ANDREW, EDUARDO BORENZSTEIN, RATNA SAHAY AND JEROMIN ZETTELMAYER (1999): "The Evolution of Output in Transition Economies: Explaining the Differences," *IMF WP*, No. 99/73.
- BRAGA DE MACEDO, JORGE AND JOAQUIM OLIVEIRA MARTINS (2006): "Growth, Reform Indicators and Policy Complementarities," *NBER Working Paper*, No. 12544.
- CHRISTOFFERSEN, PETER AND PETER DOYLE (2000): "From Inflation to Growth: Eight Years of Transition," *Economics of Transition*, 8(2), pp. 421–51.
- CUNGU, AZETA AND JOHAN SWINNEN (2003): "The Impact of Aid on Economic Growth in Transition Economies: An Empirical Study," *LICOS Discussion Paper*, No. 128/2003.
- DE MELO, MARTHA, CEVDET DENIZER AND ALAN GELB (1997): "From Plan to Market: Patterns of Transition," in: Blejer, Mario I. and Škreb, Marko (eds.), *Macroeconomic Stabilization in Transition Economies*, pp. 17–72. Cambridge: Cambridge University Press.
- DE MELO, MARTHA, CEVDET DENIZER, ALAN GELB AND STOYAN TENEV (2001): "Circumstance and Choice: The Role of Initial Conditions and Policies in Transition Economies," *World Bank Economic Review*, 15(1), pp. 1–31.
- DENIZER, CEVDET (1997): "Stabilization, Adjustment, and Growth Prospects in Transition Economies," *World Bank Policy Research Working Paper*, No. 1855.
- ESCHENBACH, FELIX AND BERNARD HOEKMAN (2005): "Services Policy Reform and Economic Growth in Transition Economies, 1990–2004," *World Bank WPS*, 3663 (July).
- FALCETTI, ELISABETTA, TATIANA LYSENKO AND PETER SANFEY (2006): "Reforms and Growth in Transition: Re-examining the Evidence," *Journal of Comparative Economics*, 34(3), pp. 421–45.
- FALCETTI, ELISABETTA, MARTIN RAISER AND PETER SANFEY (2002): "Defying the Odds: Initial Conditions, Reforms, and Growth in the First Decade of Transition," *Journal of Comparative Economics*, 30, pp. 229–50.

- FIDRMUC, JAN (2003): "Economic Reform, Democracy and Growth during Post-Communist Transition," *European Journal of Political Economy*, 19(3), pp. 583–604.
- FIDRMUC, JAN (2001): "Forecasting Growth in Transition Economies: A Reassessment," Bonn, Center for European Integration Studies, mimeo.
- FIDRMUC, JAN AND ARIANE TICHIT (2004): "Mind the Break! Accounting for Structural Breaks in Growth during Transition," *William Davidson Institute Working Paper*, No. 643.
- FISCHER, STANLEY AND RATNA SAHAY (2004): "Transition Economies: The Role of Institutions and Initial Conditions," IMF Conference in Honour of Guillermo Calvo.
- FISCHER, STANLEY AND RATNA SAHAY (2001): "The Transition Economies After Ten Years," in: Orlowski, Lucjan T. (ed.) *Transition and Growth in Post-Communist Countries: The Ten-year Experience*, pp. 3–47. Cheltenham, UK and Northampton, MA, USA: Edward Elgar.
- FISCHER, STANLEY, RATNA SAHAY AND CARLOS A. VÉGH (1998): "From Transition to Market: Evidence and Growth Prospects," *IMF Working Paper*, No. 98/52.
- FISCHER, STANLEY, RATNA SAHAY AND CARLOS VÉGH (1996A): "Economies in Transition: The Beginnings of Growth," *American Economic Review*, 86(2), pp. 229–33.
- FISCHER, STANLEY, RATNA SAHAY AND CARLOS VÉGH (1996B): "Stabilization and Growth in Transition Economies: The Early Experience," *Journal of Economic Perspectives* 10(2), pp. 45–66.
- GODOY, SERGIO AND JOSEPH E. STIGLITZ (2004): "Growth, Initial Conditions, Law and Speed of Privatization in Transition Countries: 11 Years Later," 2004 AEA meetings.
- HAVRYLYSHYN, OLEH AND RON VAN ROODEN (2003): "Institutions Matter in Transition, But So Do Policies," *Comparative Economic Studies*, 45(1), pp. 2–24.
- HAVRYLYSHYN, OLEH, IVALO IZVORSKI AND RON VAN ROODEN (2001): "Recovery and Growth in Transition Economies 1990–97: A Stylised Regression Analysis," in: Hoen, Herman W. (ed.) *Good Governance in Central and Eastern Europe: The Puzzle of Capitalism by Design*, pp. 26–53. Economies and Societies in Transition series. Cheltenham, UK and Northampton, MA, USA: Edward Elgar.
- HERNANDEZ-CATA, ERNESTO (1997): "Liberalization and the Behavior of Output during the Transition from Plan to Market," *IMF Staff Papers*, No. 44(4), pp. 405–29.
- HEYBEY, BERTA AND PETER MURRELL (1999): "The Relationship between Economic Growth and the Speed of Liberalization," *Journal of Policy Reform*, 3(2), pp. 121–37.
- KIM, BYUNG-YEON AND JUKKA PIRTILA (2003): "The Political Economy of Reforms: Empirical Evidence from Post-Communist Transition in the 1990s," Bank of Finland, Institute for Economies in Transition Discussion Paper, No. 4.
- KRUEGER, GARY AND MAREK CIOLKO (1998): "A Note on Initial Conditions and Liberalization during Transition," *Journal of Comparative Economics*, 26(4), pp. 718–34.
- LAWSON, COLIN AND HAIFENG WANG (2005): "Economic Transition in Central and Eastern Europe and the Former Soviet Union: Which Policies Worked?" University of Bath, Department of Economics and International Development, Working Paper, No. 01-05.

- LOUGANI, PARKASH AND NATHAN SHEETS (1997): "Central Bank Independence, Inflation and Growth in Transition Economies," *Journal of Money, Credit and Banking*, 29(3), pp. 381–99.
- MERLEVEDE, BRUNO (2003): "Reform Reversals and Output Growth in Transition Economies," *Economics of Transition*, 11(4), pp. 597–751.
- MICKIEWICZ, TOMASZ M. (2005): "Post-Communist Recessions Re-examined," in: Mickiewicz, T. M., *Economic Transition in Central Europe and the Commonwealth of Independent States*, Ch. 6, pp. 99–118. Houndsmill: Palgrave Macmillan.
- MICKIEWICZ, TOMASZ M. (2005): "Is The Link Between Reforms and Growth Spurious? A Comment," in: Mickiewicz, T. M., *Economic Transition in Central Europe and the Commonwealth of Independent States*, Ch. 10, pp. 181–96. Houndsmill: Palgrave Macmillan.
- NEYAPTI, BILIN AND NERGIZ DINCER (2005): "Measuring Quality of Bank Regulation and Supervision, with an Application to Transition Economies," *Economic Inquiry*, 43, pp. 79–99.
- PICULESCU, VIOLETA (2003): "Direct and Feedback Effects on Economic and Institutional Developments in Transition: A Path Analysis Approach," Goteborg University, mimeo.
- POLANEC, SASO (2003): "Convergence at Last? Evidence from Transition Countries," LICOS Discussion Paper, No. 144/2004.
- RADULESCU, ROXANA AND DAVID BARLOW (2002): "The Relationship between Policies and Growth in Transition Countries," *Economics of Transition*, 10(3), pp. 719–45.
- SACHS, JEFFREY D. (1996): "The Transition at Mid-Decade," *American Economic Review, Papers and Proceedings*, 86(2), pp. 128–33.
- SELOWSKY, MARCELO AND RICARDO MARTIN (1997): "Policy Performance and Output Growth in the Transition Economies," *American Economic Review* 87(2), pp. 349–53.
- STAEHR, KARSTEN (2003): "Reforms and Economic Growth in Transition Economies: Complementarity, Sequencing and Speed," Bank of Finland, BOFIT DP, No. 1/2003.
- WOLF, HOLGER C. (1999): "Transition Strategies: Choices and Outcomes," *Princeton Studies in International Finance*, 85 (June), pp. 1–30.

## **Appendix 2**

### **Description of variables in MRA data set**

#### ***Dependent variables:***

REF= -1 if the coefficient of reform is negative and statistically significant at 10%, 0 if the coefficient is insignificant, and 1 if the coefficient is positive and statistically significant at 10%.

REF\_CUM = -1, 0, and 1 if the coefficient on cumulative reform is negative and significant at 10%, insignificant, and positive and significant at 10%, respectively.

#### ***Meta-independent variables:***

##### **I) Method**

N = the number of observations in the individual study

K = the number of explanatory variables

DF = N–K is the degrees of freedom, reflecting the power of the test statistics

AUTHAFF = 1 if all authors are from academia, = 0 if at least one of the authors is not

##### **Econometric technique**

PANEL = 1 if the model uses panel data, = 0 if cross-section

ENDO = 1 if the model used is 2SLS, 3SLS, GMM, = 0 otherwise

FIXED = 1 if fixed effects estimation is used (or country dummies)

##### **Time period**

START = first year of the sample

END = end year of the sample

MID = (START+END)/2 is the average year of the sample

EARLY = 1 if the sample is 1989–1993

MIDDLE = 1 if the sample is 1994–1998

LATE = 1 if the sample is 1999–2004

E93 – E04 = dummy for the end year of the data sample (1993 – 2004 respectively)

##### **II) Measurement**

**Origin of the index.** Each index belongs to one of the following four types:

WB = 1 if the reform index originates from the World Bank only

EBRD = 1 if the reform index originates from the EBRD only

COMB = 1 if a combination of EBRD and WB indices is used

OTHER = 1 if the share of private sector in GDP or openness is used

**Type of index** (applies to WB / EBRD / COMB)

LII = 1 if internal and/or price liberalisation components are used as a reform measure

LIE = 1 if external liberalisation components are used

LIP = 1 if privatisation and banking reform components are used

MARGEFF = 1 if LII, LIE, LIP are used in the same specification

AV = 1 if average (simple or weighted, or simple sum) of LII, LIE, LIP is used

CLI = 1 if CLI (Cumulative Liberalisation Index from the World Bank, see De Melo et al., 1997 for details) is used

### **Measure of dynamics**

LAGDEP = 1 if lagged dependent variable is used in the regression

SPEED = 1 if speed is the measure of reform

LAGS = 1 if both contemporaneous and lagged reform variables are used

LAGLIB = 1 if either LAGS=1 or SPEED = 1

TIME = 1 if time dynamics are controlled for

### **III) Specification**

IC = 1 if controlled for initial conditions

IC12 = 1 if first cluster and/or second cluster of initial conditions from de Melo et al. (1997) is used

NIC = the number of types of controls for IC

STABIL = 1 if controlled for stabilisation

NSTAB = the number of types of controls for stabilisation

INFL = 1 if inflation is controlled for

INST = 1 if controlled for institutional development

NINST = the number of types of controls for institutional development

FACT = 1 if controlled for factors of production

NFACT = the number of types of controls for factors of production

FSU = 1 if the results are reported separately for FSU countries

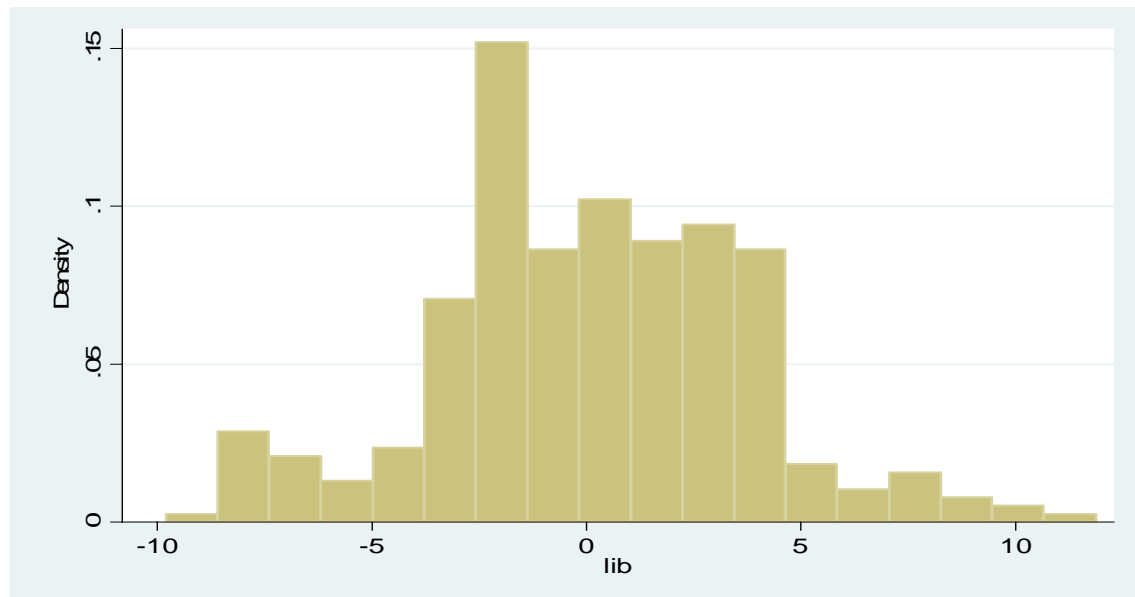
PUBPR = 1 if the study separates the effect of reform on the public and private sector (effect of public sector is reported)

UNDERREP = 1 if study measures underreported output and corrects for it

D2 – D43 = study dummies

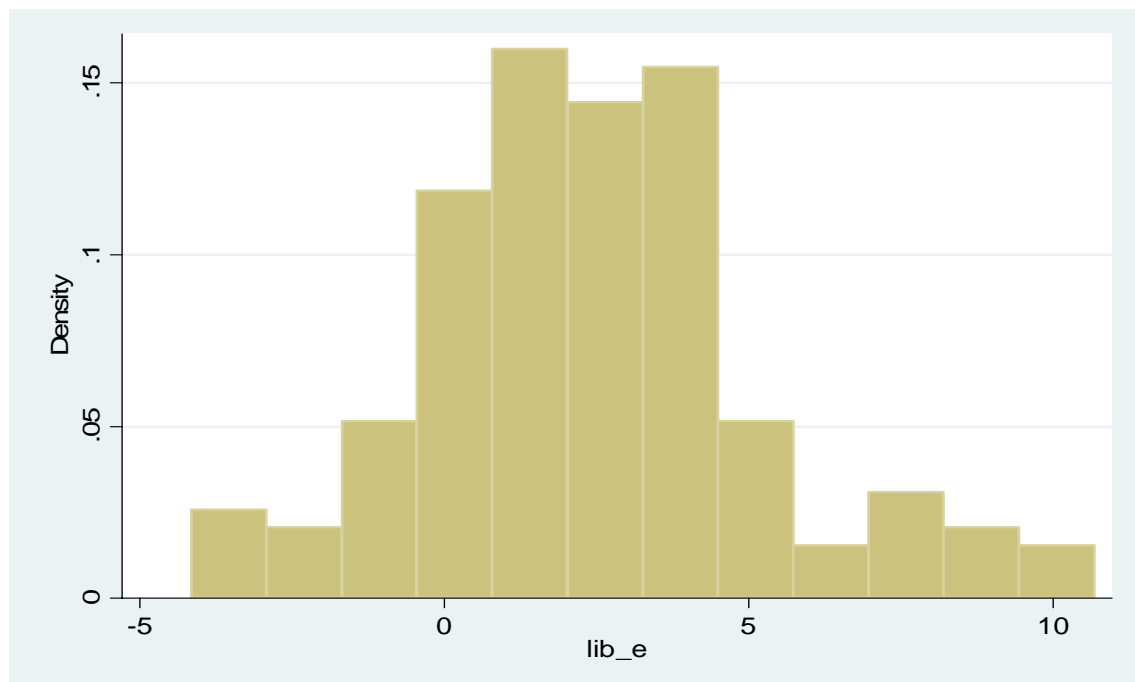
**Figure 1: Histogram of the T-statistics of Coefficients of Structural Reforms on Economic Growth**

(317 coefficients from the 43 papers listed in Appendix 1)



**Figure 2: Histogram of the T-statistics of Coefficients of Contemporaneous Structural Reforms on Economic Growth**

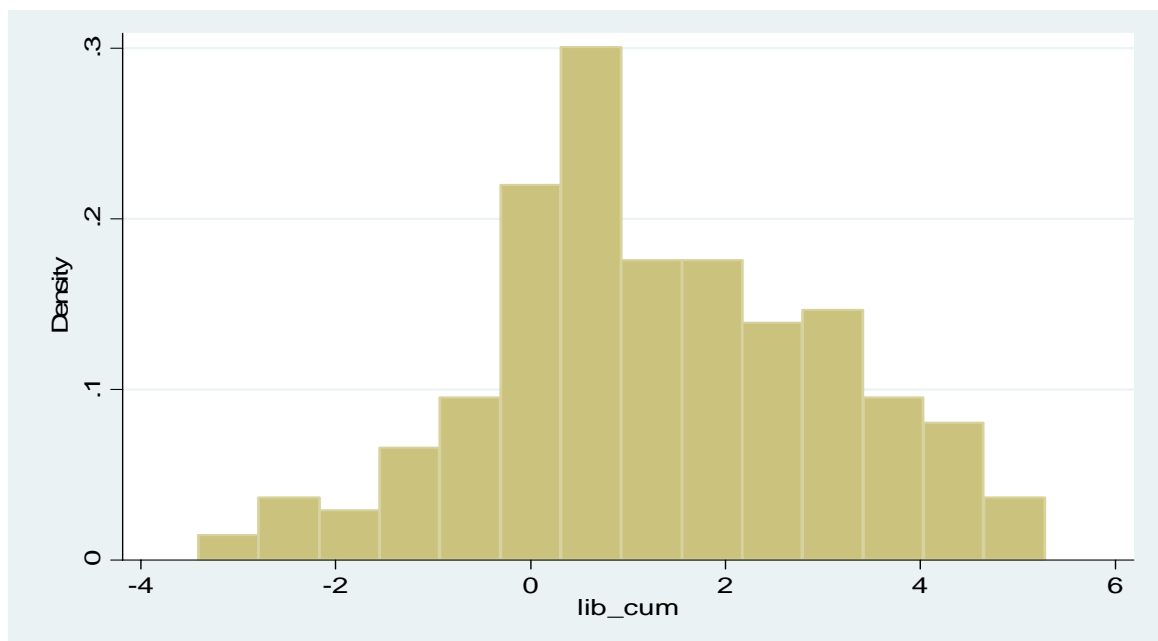
(excludes those from specifications with lagged reform and speed of reform; 157 coefficients from papers listed in Appendix 1)





**Figure 3: Histogram of the T-statistics of Coefficients of Cumulative Effect of Structural Reforms on Economic Growth**

(221 coefficients from papers listed in Appendix 1)



**CNB WORKING PAPER SERIES**

2/2007	Ian Babetskii: Nauro F. Campos	<i>Does reform work?</i> <i>An econometric examination of the reform-growth puzzle</i>
1/2007	Ian Babetskii: Fabrizio Coricelli Roman Horváth	<i>Measuring and explaining inflation persistence:</i> <i>Disaggregate evidence on the Czech Republic</i>
13/2006	Frederic S. Mishkin: Klaus Schmidt-Hebbel	<i>Does inflation targeting make a difference?</i>
12/2006	Richard Disney: Sarah Bridges John Gathergood	<i>Housing wealth and household indebtedness: Is there a household 'financial accelerator'?</i>
11/2006	Michel Juillard: Ondřej Kameník Michael Kumhof Douglas Laxton	<i>Measures of potential output from an estimated DSGE model of the United States</i>
10/2006	Jiří Podpiera: Marie Raková	<i>Degree of competition and export-production relative prices when the exchange rate changes: Evidence from a panel of Czech exporting companies</i>
9/2006	Alexis Derviz: Jiří Podpiera	<i>Cross-border lending contagion in multinational banks</i>
8/2006	Aleš Bulíř: Jaromír Hurník	<i>The Maastricht inflation criterion: "Saints" and "Sinners"</i>
7/2006	Alena Bičáková: Jiří Slačálek Michal Slavík	<i>Fiscal implications of personal tax adjustments in the Czech Republic</i>
6/2006	Martin Fukač: Adrian Pagan	<i>Issues in adopting DSGE models for use in the policy process</i>
5/2006	Martin Fukač:	<i>New Keynesian model dynamics under heterogeneous expectations and adaptive learning</i>
4/2006	Kamil Dybczak: Vladislav Flek Dana Hájková Jaromír Hurník	<i>Supply-side performance and structure in the Czech Republic (1995–2005)</i>
3/2006	Aleš Krejdl:	<i>Fiscal sustainability – definition, indicators and assessment of Czech public finance sustainability</i>
2/2006	Kamil Dybczak:	<i>Generational accounts in the Czech Republic</i>
1/2006	Ian Babetskii:	<i>Aggregate wage flexibility in selected new EU member states</i>
14/2005	Stephen G. Cecchetti:	<i>The brave new world of central banking: The policy challenges posed by asset price booms and busts</i>
13/2005	Robert F. Engle: Jose Gonzalo Rangel	<i>The spline GARCH model for unconditional volatility and its global macroeconomic causes</i>
12/2005	Jaromír Beneš: Tibor Hlédik Michael Kumhof David Vávra	<i>An economy in transition and DSGE: What the Czech national bank's new projection model needs</i>

11/2005	Marek Hlaváček: Michael Koňák Josef Čada	<i>The application of structured feedforward neural networks to the modelling of daily series of currency in circulation</i>
10/2005	Ondřej Kameník:	<i>Solving SDGE models: A new algorithm for the sylvester equation</i>
9/2005	Roman Šustek:	<i>Plant-level nonconvexities and the monetary transmission mechanism</i>
8/2005	Roman Horváth:	<i>Exchange rate variability, pressures and optimum currency area criteria: Implications for the central and eastern european countries</i>
7/2005	Balázs Égert: Luboš Komárek	<i>Foreign exchange interventions and interest rate policy in the Czech Republic: Hand in glove?</i>
6/2005	Anca Podpiera: Jiří Podpiera	<i>Deteriorating cost efficiency in commercial banks signals an increasing risk of failure</i>
5/2005	Luboš Komárek: Martin Melecký	<i>The behavioural equilibrium exchange rate of the Czech koruna</i>
4/2005	Kateřina Arnoštová: Jaromír Hurník	<i>The monetary transmission mechanism in the Czech Republic (evidence from VAR analysis)</i>
3/2005	Vladimír Benáček: Jiří Podpiera Ladislav Prokop	<i>Determining factors of Czech foreign trade: A cross-section time series perspective</i>
2/2005	Kamil Galuščák: Daniel Münich	<i>Structural and cyclical unemployment: What can we derive from the matching function?</i>
1/2005	Ivan Babouček: Martin Jančar	<i>Effects of macroeconomic shocks to the quality of the aggregate loan portfolio</i>
10/2004	Aleš Bulíř: Kateřina Šmídková	<i>Exchange rates in the new EU accession countries: What have we learned from the forerunners</i>
9/2004	Martin Cincibuch: Jiří Podpiera	<i>Beyond Balassa-Samuelson: Real appreciation in tradables in transition countries</i>
8/2004	Jaromír Beneš: David Vávra	<i>Eigenvalue decomposition of time series with application to the Czech business cycle</i>
7/2004	Vladislav Flek, ed.:	<i>Anatomy of the Czech labour market: From over-employment to under-employment in ten years?</i>
6/2004	Narcisa Kadlčáková: Joerg Keplinger	<i>Credit risk and bank lending in the Czech Republic</i>
5/2004	Petr Král:	<i>Identification and measurement of relationships concerning inflow of FDI: The case of the Czech Republic</i>
4/2004	Jiří Podpiera:	<i>Consumers, consumer prices and the Czech business cycle identification</i>
3/2004	Anca Pruteanu:	<i>The role of banks in the Czech monetary policy transmission mechanism</i>
2/2004	Ian Babetskii:	<i>EU enlargement and endogeneity of some OCA criteria: Evidence from the CEECs</i>
1/2004	Alexis Derviz: Jiří Podpiera	<i>Predicting bank CAMELS and S&amp;P ratings: The case of the Czech Republic</i>
12/2003	Tibor Hlédik:	<i>Modelling the second-round effects of supply-side shocks on inflation</i>

11/2003	Luboš Komárek: Zdeněk Čech Roman Horváth	<i>ERM II membership – the view of the accession countries</i>
10/2003	Luboš Komárek: Zdeněk Čech Roman Horváth	<i>Optimum currency area indices – how close is the Czech Republic to the eurozone?</i>
9/2003	Alexis Derviz: Narcisa Kadlčáková Lucie Kobzová	<i>Credit risk, systemic uncertainties and economic capital requirements for an artificial bank loan portfolio</i>
8/2003	Tomáš Holub: Martin Čihák	<i>Price convergence: What can the Balassa–Samuelson model tell us?</i>
7/2003	Vladimír Bezděk: Kamil Dybczak Aleš Krejdl	<i>Czech fiscal policy: Introductory analysis</i>
6/2003	Alexis Derviz:	<i>FOREX microstructure, invisible price determinants, and the central bank's understanding of exchange rate formation</i>
5/2003	Aleš Bulíř:	<i>Some exchange rates are more stable than others: Short-run evidence from transition countries</i>
4/2003	Alexis Derviz:	<i>Components of the Czech koruna risk premium in a multiple-dealer FX market</i>
3/2003	Vladimír Benáček: Ladislav Prokop Jan Á. Víšek	<i>Determining factors of the Czech foreign trade balance: Structural issues in trade creation</i>
2/2003	Martin Čihák: Tomáš Holub	<i>Price convergence to the EU: What do the 1999 ICP data tell us?</i>
1/2003	Kamil Galuščák: Daniel Münich	<i>Microfoundations of the wage inflation in the Czech Republic</i>
4/2002	Vladislav Flek: Lenka Marková Jiří Podpiera	<i>Sectoral productivity and real exchange rate appreciation: Much ado about nothing?</i>
3/2002	Kateřina Šmídková: Ray Barrell Dawn Holland	<i>Estimates of fundamental real exchange rates for the five EU pre-accession countries</i>
2/2002	Martin Hlušek:	<i>Estimating market probabilities of future interest rate changes</i>
1/2002	Viktor Kotlán:	<i>Monetary policy and the term spread in a macro model of a small open economy</i>

**CNB RESEARCH AND POLICY NOTES**

2/2006	Garry J. Schinasi:	<i>Private finance and public policy</i>
1/2006	Ondřej Schneider:	<i>The EU budget dispute – A blessing in disguise?</i>
5/2005	Jan Stráský:	<i>Optimal forward-looking policy rules in the quarterly projection model of the Czech National Bank</i>
4/2005	Vít Bárta:	<i>Fulfilment of the Maastricht inflation criterion by the Czech Republic: Potential costs and policy options</i>
3/2005	Helena Šůvová: Eva Kozelková David Zeman Jaroslava Bauerová	<i>Eligibility of external credit assessment institutions</i>
2/2005	Martin Čihák: Jaroslav Heřmánek	<i>Stress testing the Czech banking system: Where are we? Where are we going?</i>
1/2005	David Navrátil: Viktor Kotlán	<i>The CNB's policy decisions – Are they priced in by the markets?</i>
4/2004	Aleš Bulíř:	<i>External and fiscal sustainability of the Czech economy: A quick look through the IMF's night-vision goggles</i>
3/2004	Martin Čihák:	<i>Designing stress tests for the Czech banking system</i>
2/2004	Martin Čihák:	<i>Stress testing: A review of key concepts</i>
1/2004	Tomáš Holub:	<i>Foreign exchange interventions under inflation targeting: The Czech experience</i>
2/2003	Kateřina Šmídková:	<i>Targeting inflation under uncertainty: Policy makers' perspective</i>
1/2003	Michal Škořepa: Viktor Kotlán	<i>Inflation targeting: To forecast or to simulate?</i>

**CNB ECONOMIC RESEARCH BULLETIN**

August 2007	<i>Financial stability in a transforming economy</i>
November 2006	<i>ERM II and euro adoption</i>
August 2006	<i>Research priorities and central banks</i>
November 2005	<i>Financial stability</i>
May 2005	<i>Potential output</i>
October 2004	<i>Fiscal issues</i>
May 2004	<i>Inflation targeting</i>
December 2003	<i>Equilibrium exchange rate</i>

Czech National Bank  
Economic Research Department  
Na Příkopě 28, 115 03 Praha 1  
Czech Republic  
phone: +420 2 244 12 321  
fax: +420 2 244 14 278  
<http://www.cnb.cz>  
e-mail: [research@cnb.cz](mailto:research@cnb.cz)