



národní
úložiště
šedé
literatury

Introduction to visit to National Technical Library

Lešek, Petr; Vaněk, Tomáš
2012

Dostupný z <http://www.nusl.cz/ntk/nusl-112765>

Dílo je chráněno podle autorského zákona č. 121/2000 Sb.

Licence Creative Commons Uveďte autora-Neužívejte dílo komerčně-Nezasahujte do díla 3.0 Česko

Tento dokument byl stažen z Národního úložiště šedé literatury (NUŠL).

Datum stažení: 28.09.2024

Další dokumenty můžete najít prostřednictvím vyhledávacího rozhraní nusl.cz .

**projektil
arhitekti**



4,5 mm

PROJEKTIL ARCHITEKTI s.r.o.

- studio was founded in 2002 by partners

**Mgr. akad. arch. Roman Brychta
Ing. arch. Adam Halíř
Ing. Ondřej Hofmeistr
Ing. arch. Petr Lešek**

- main characteristics of the studio

ECONOMICAL, HELPFUL AND INVENTIVE ARCHITECTURE

what should the library be able to

help to define the city

occupy the right place in the urban structure

not to create a barrier but enrich the surrounding space

be an open institution (not to create mental or physical barriers)

offer space for meetings, encounters, contacts, various moods for staying, studying

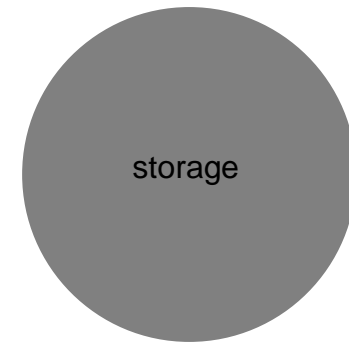
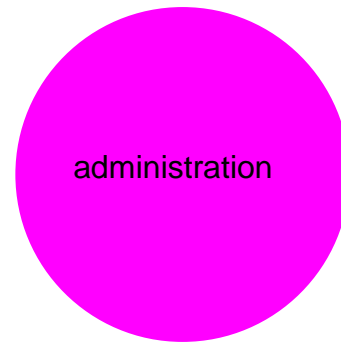
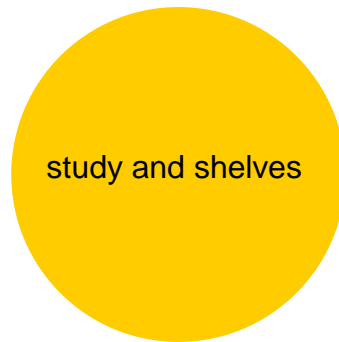
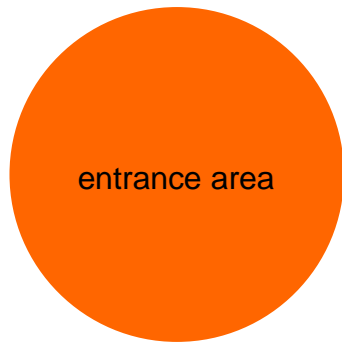
communicate with accidental visitors

facilitate art interventions in space, provoke thinking through art

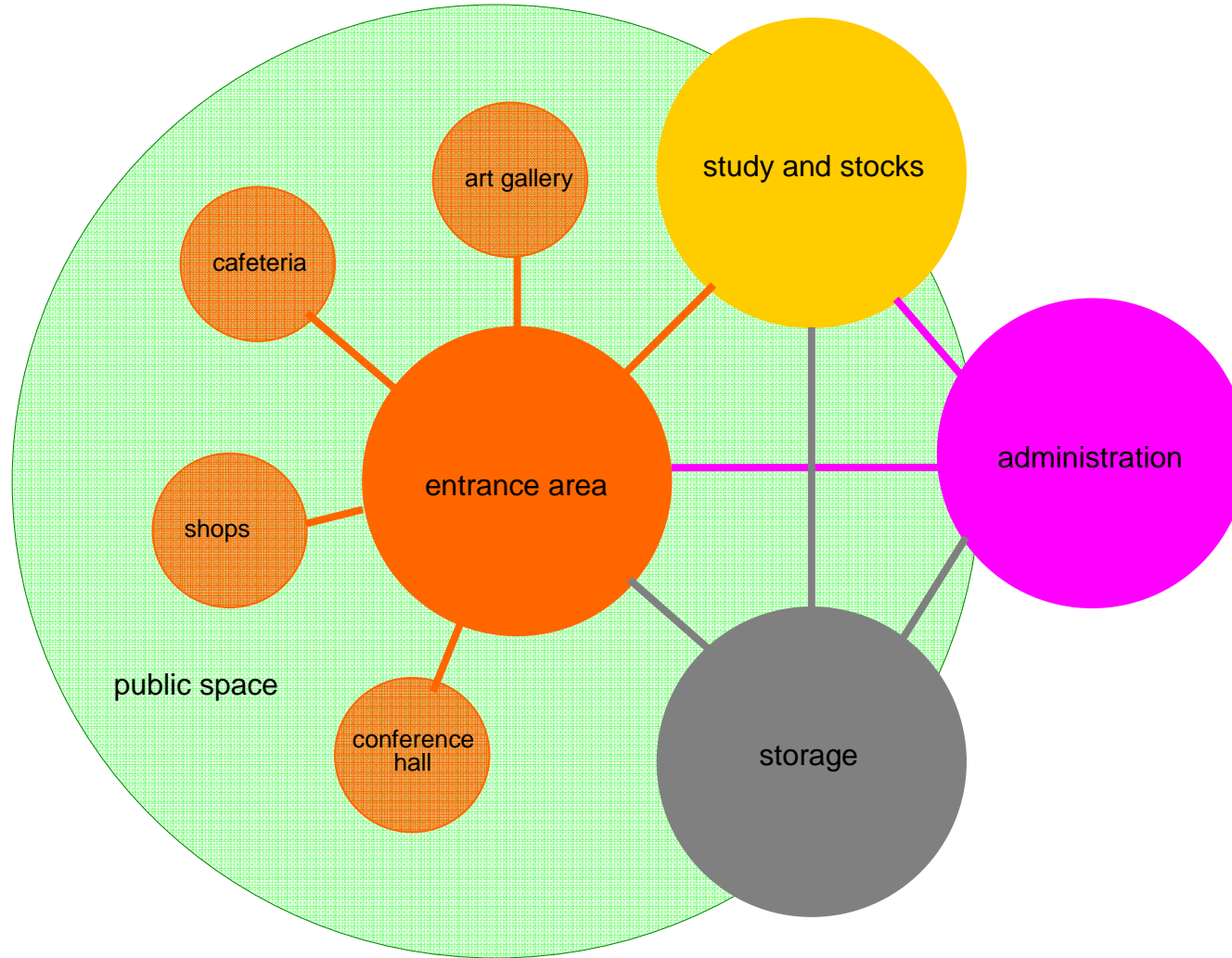
create a clear visual identity beyond its physical boundaries

be an operationally efficient building

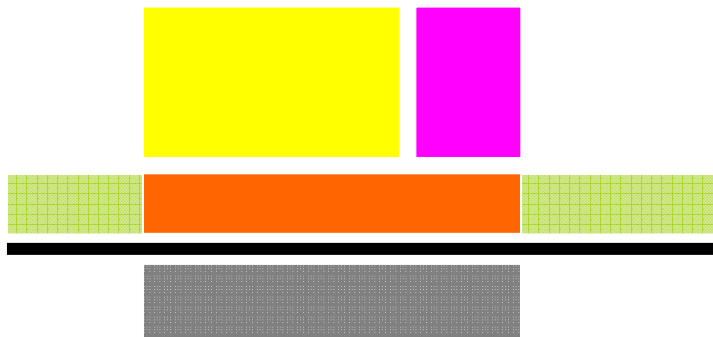
main library parts



main library operations and their links



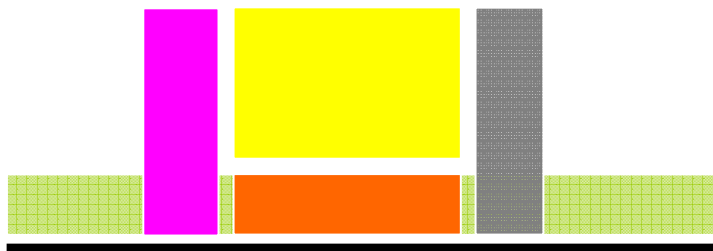
Operational diagrams of the libraries designed by Projektil



NTK Praha




MSK Ostrava



SVK Hradec Králové

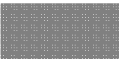


MK Kutná Hora


study and shelves


entrance area


administration


storage

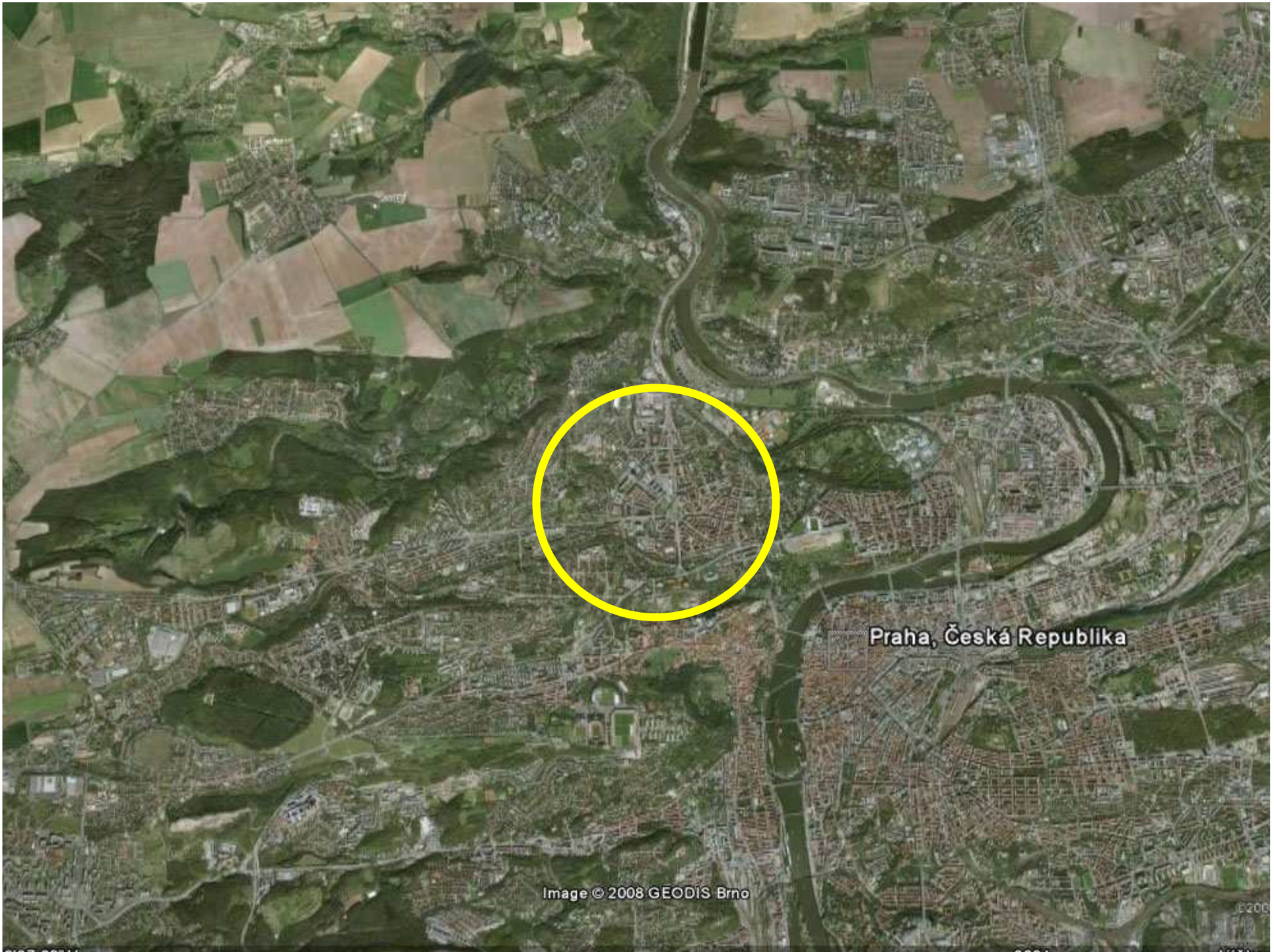
The background features a series of overlapping, concentric circles in various colors including yellow, orange, red, green, and blue. A horizontal scale bar is positioned at the top, with the text "190 mm" centered above it. On the left side, there is a partial view of a temperature scale with the symbol "°C" and the numbers "4" and "5". On the right side, there are the numbers "3" and "4" stacked vertically.

190 mm

NTKO

50°6'14.083"N, 14°23'26.365"E

**Národní technická knihovna
National Technical Library**



Praha, Česká Republika

Image © 2008 GEODIS Brno

©200

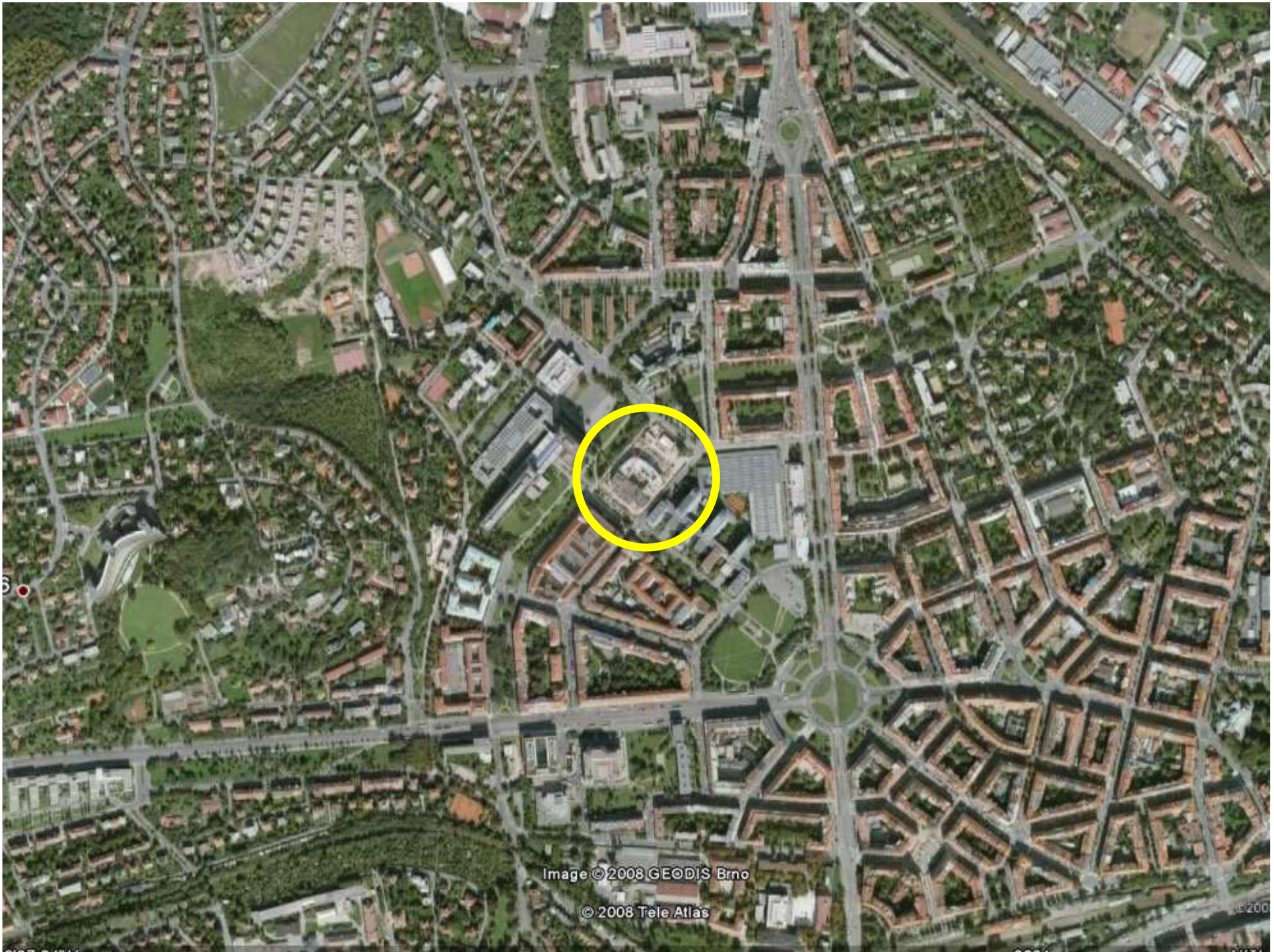
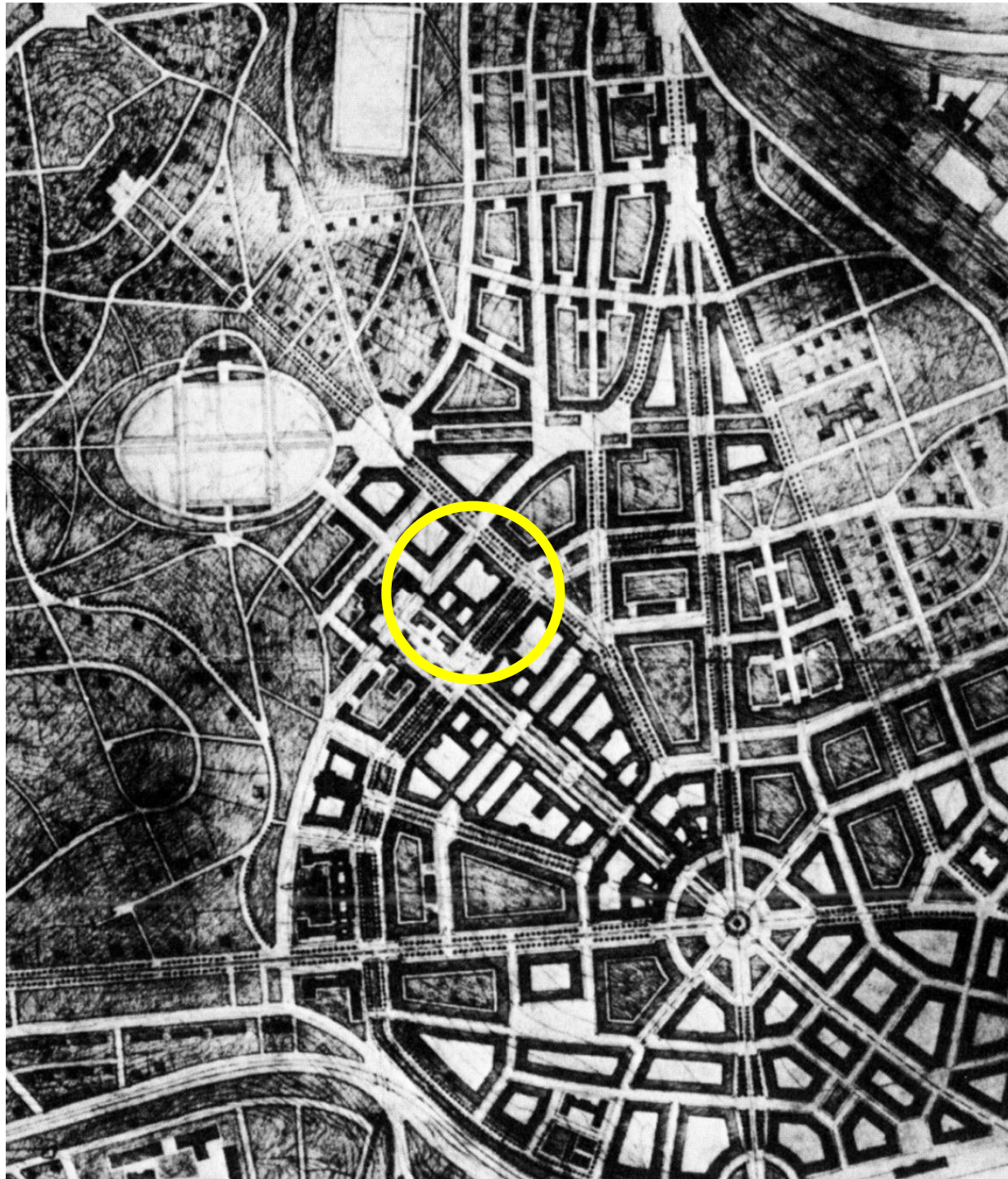


Image © 2008 GEODIS Brno

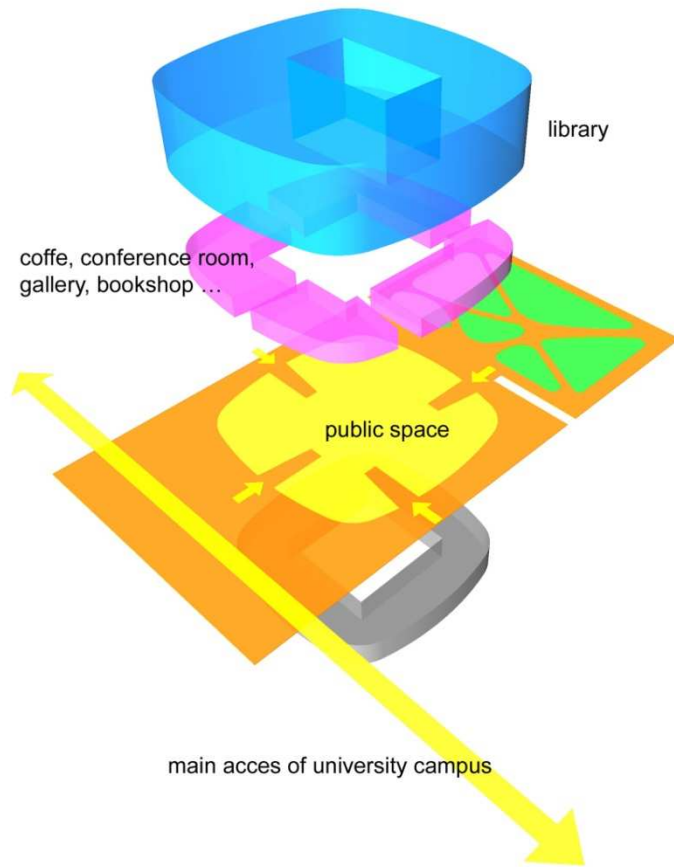
© 2008 Tele Atlas

© 2008

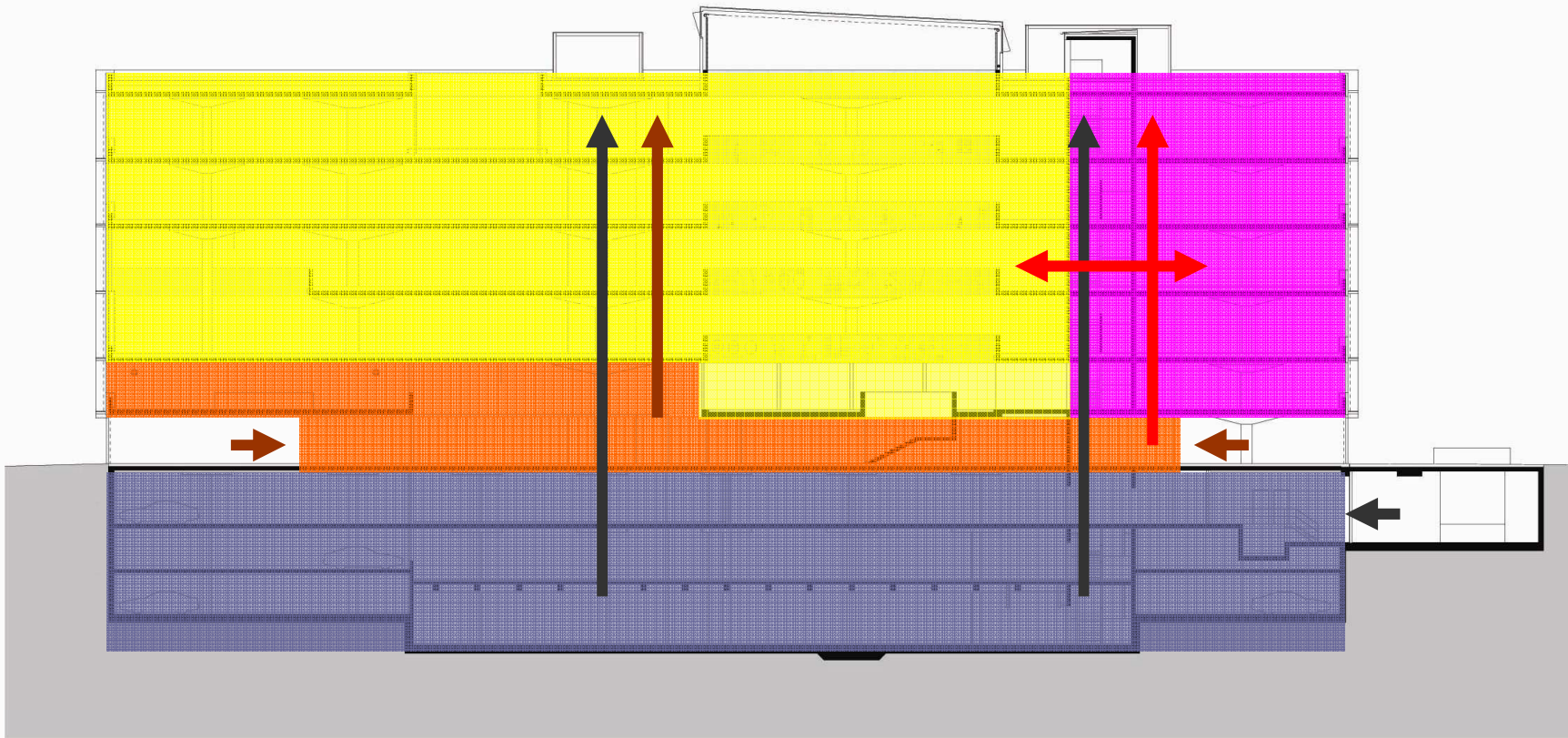


1921 – 1924 A. Engel





concept scheme



study and shelves



entrance area

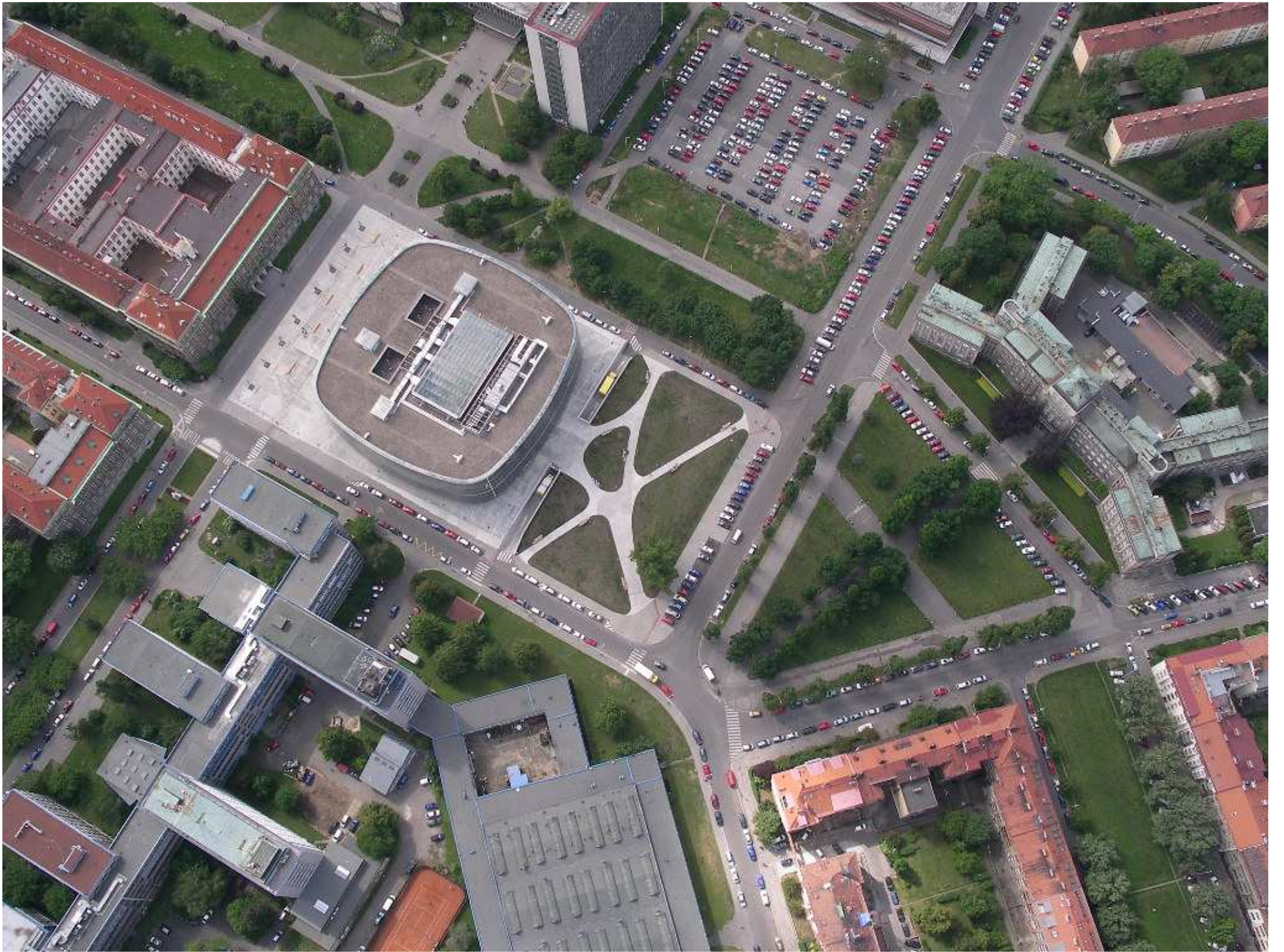


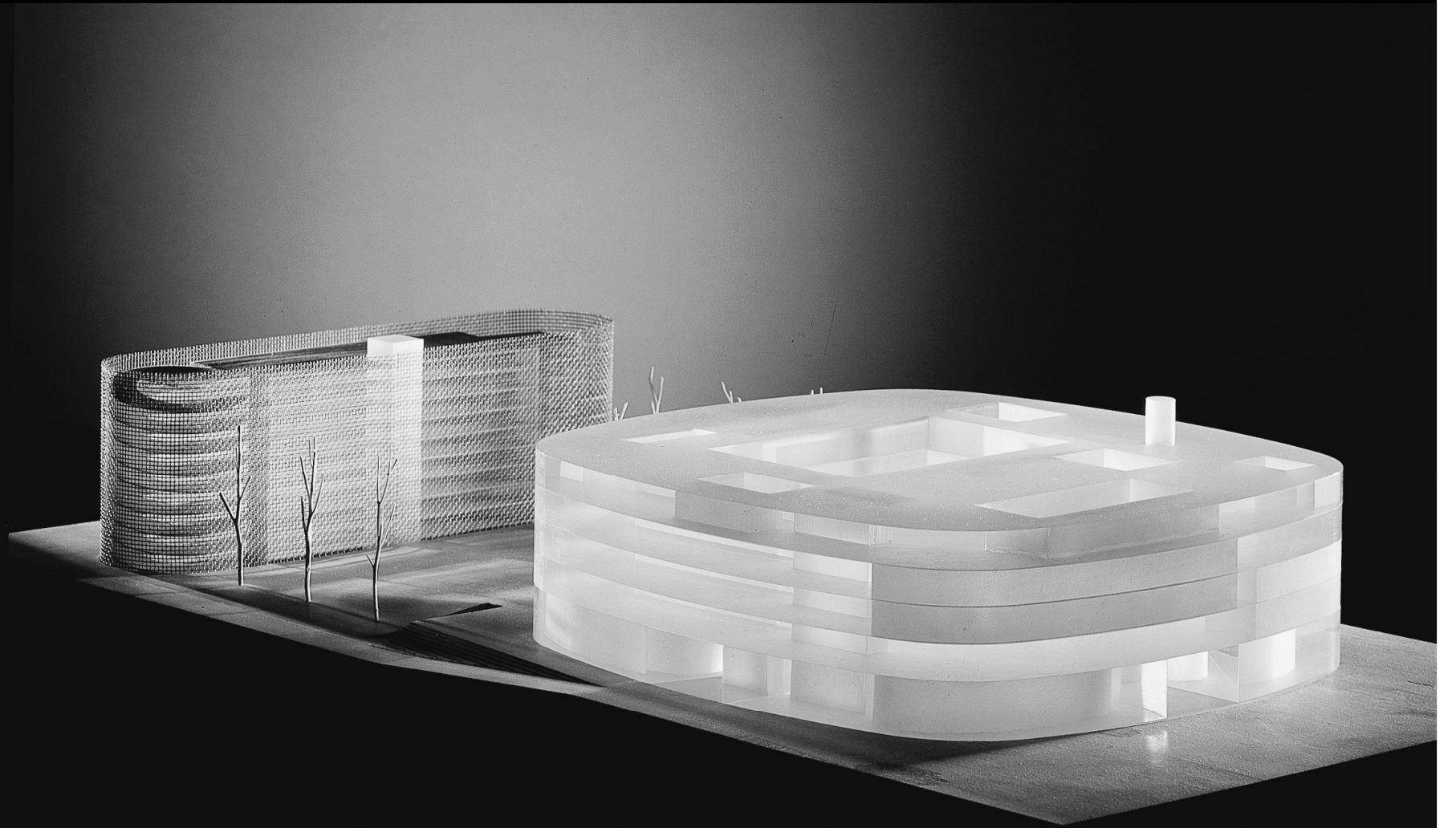
administration



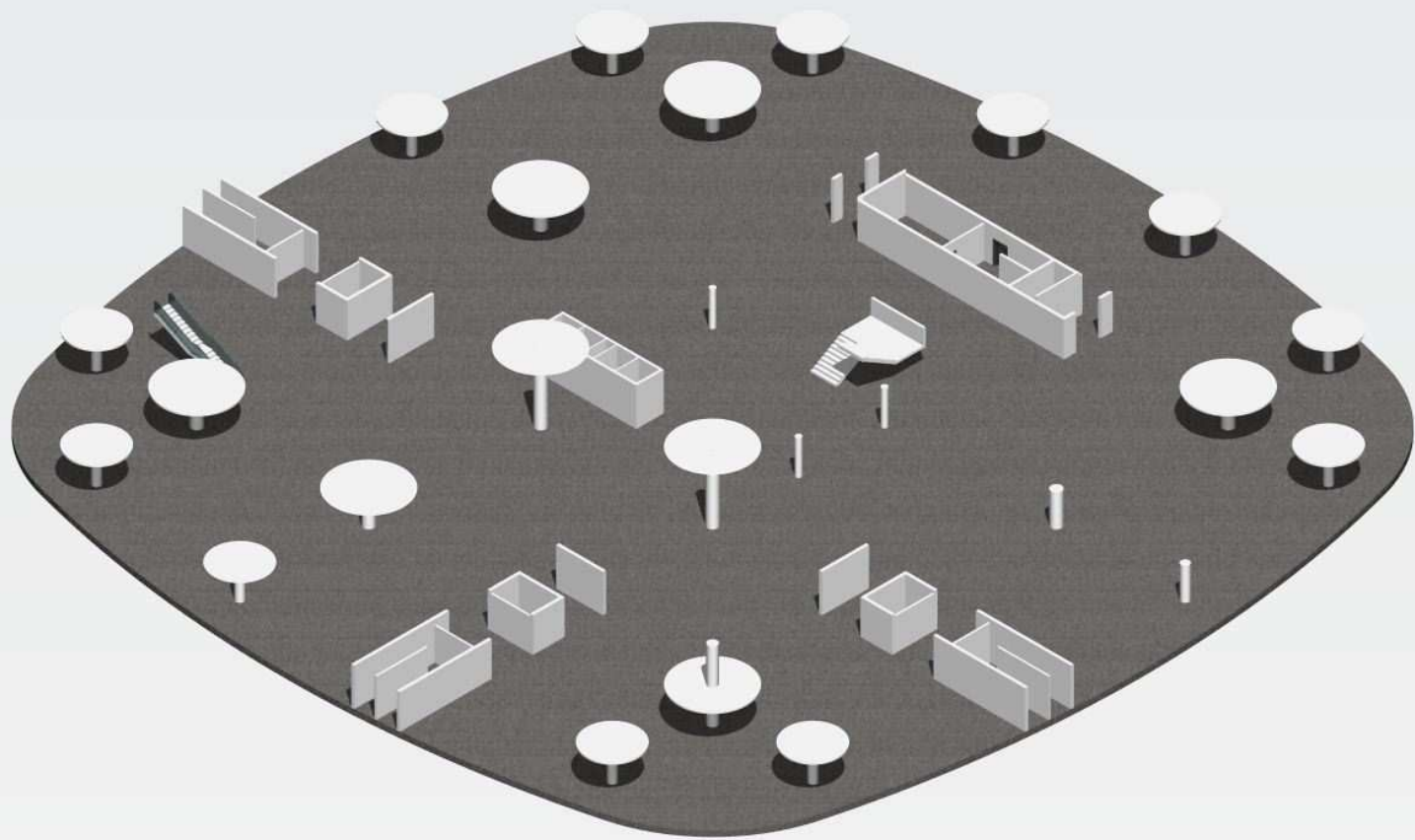
storage

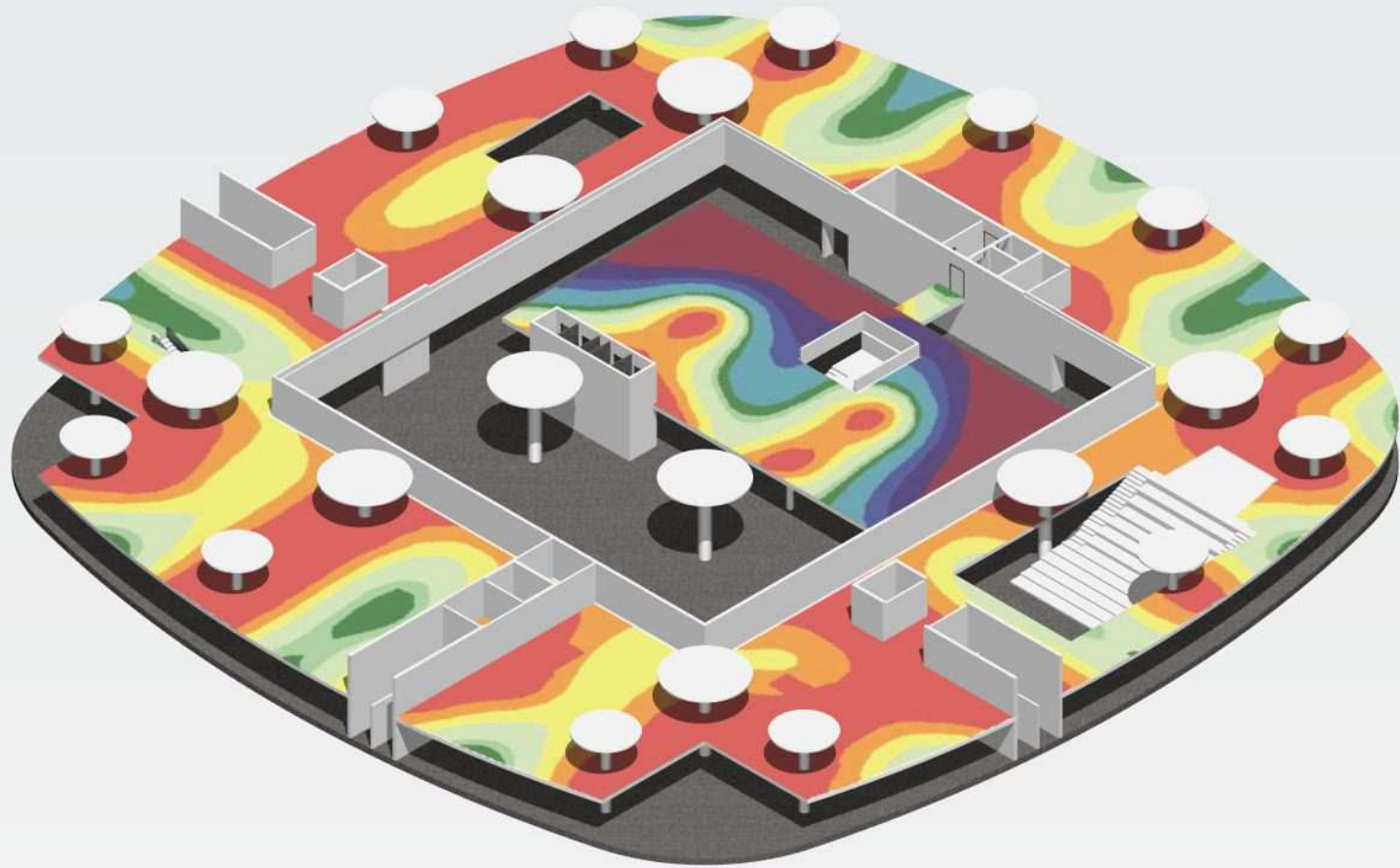
Section



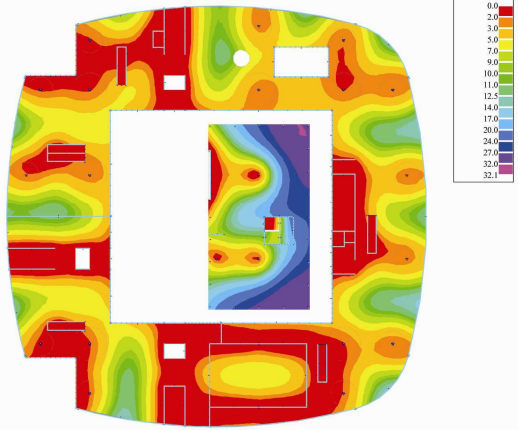




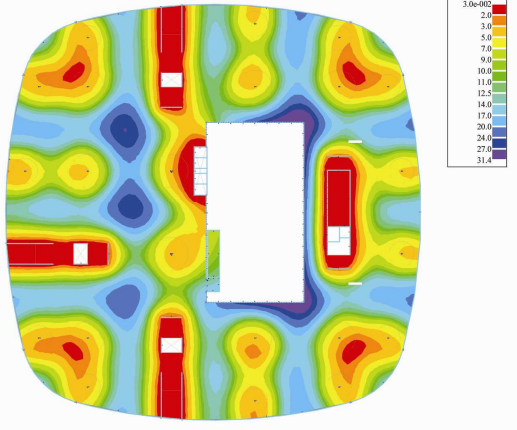




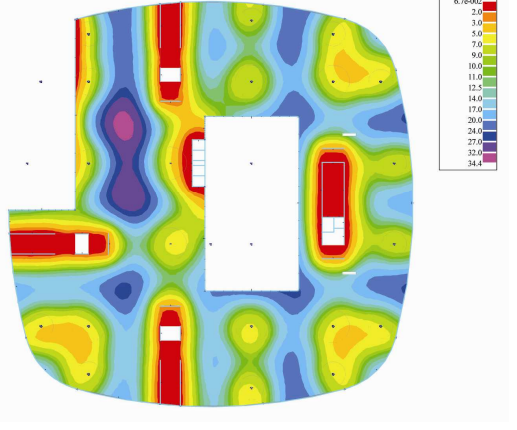
Nad 1np



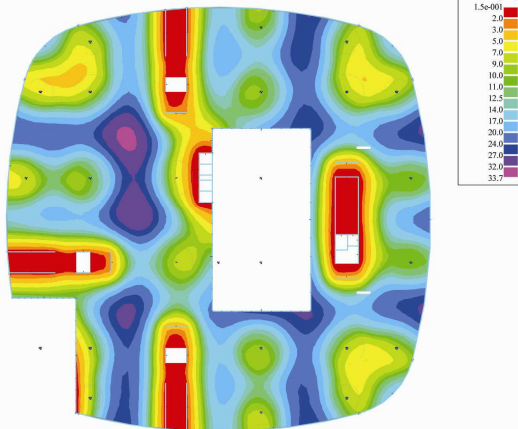
Nad 2np



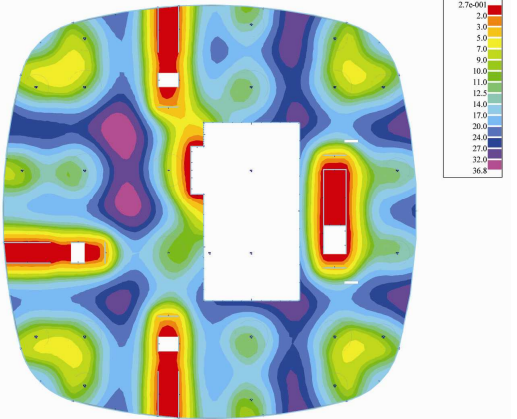
Nad 3np



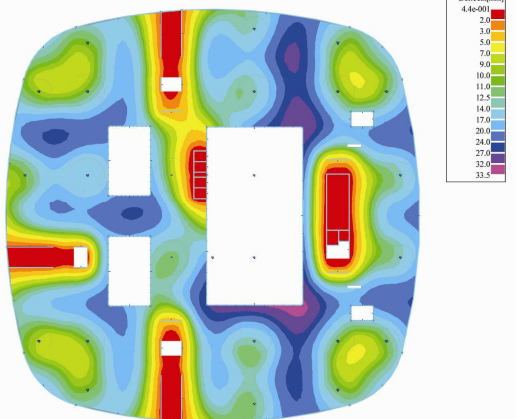
Nad 4np

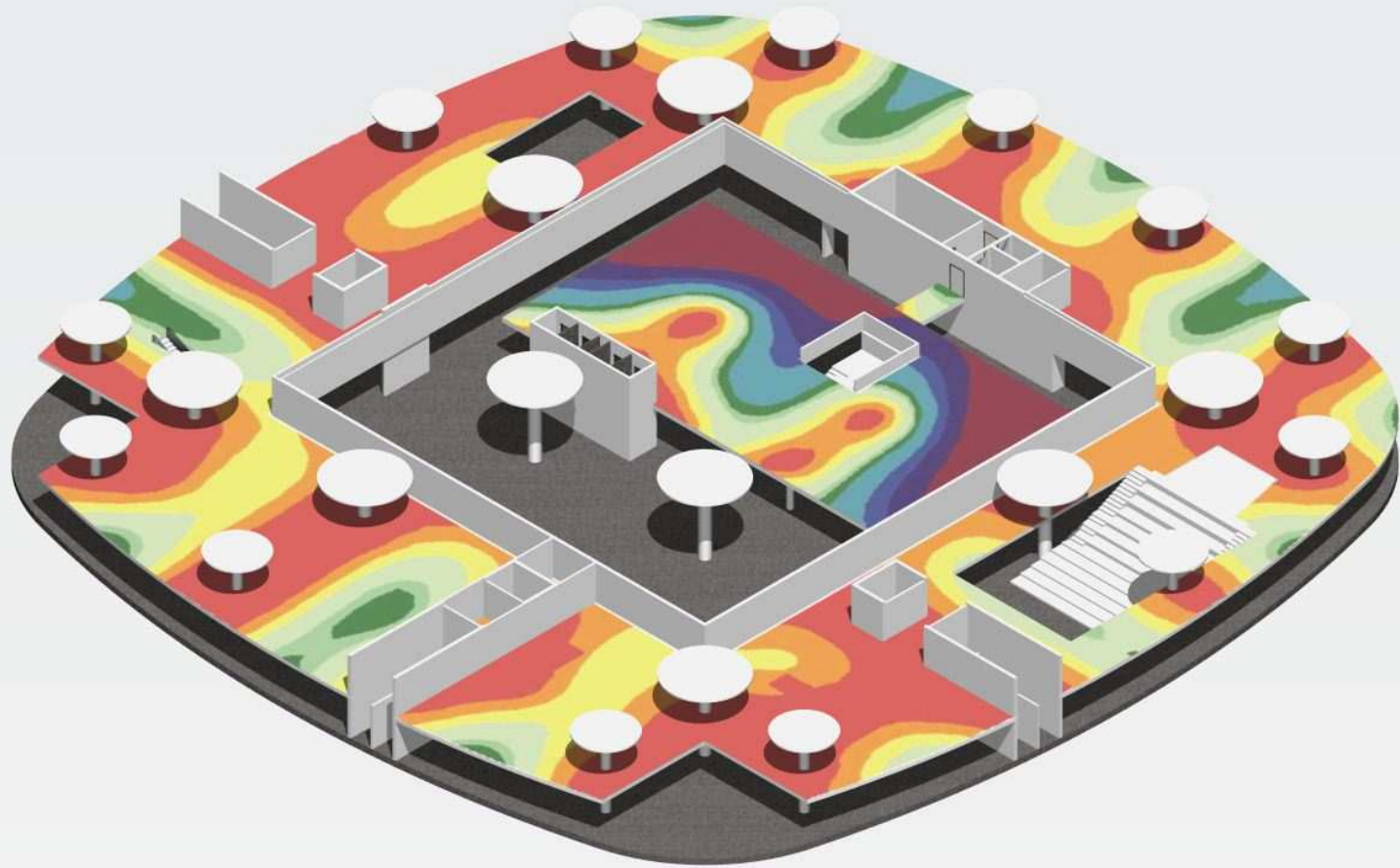


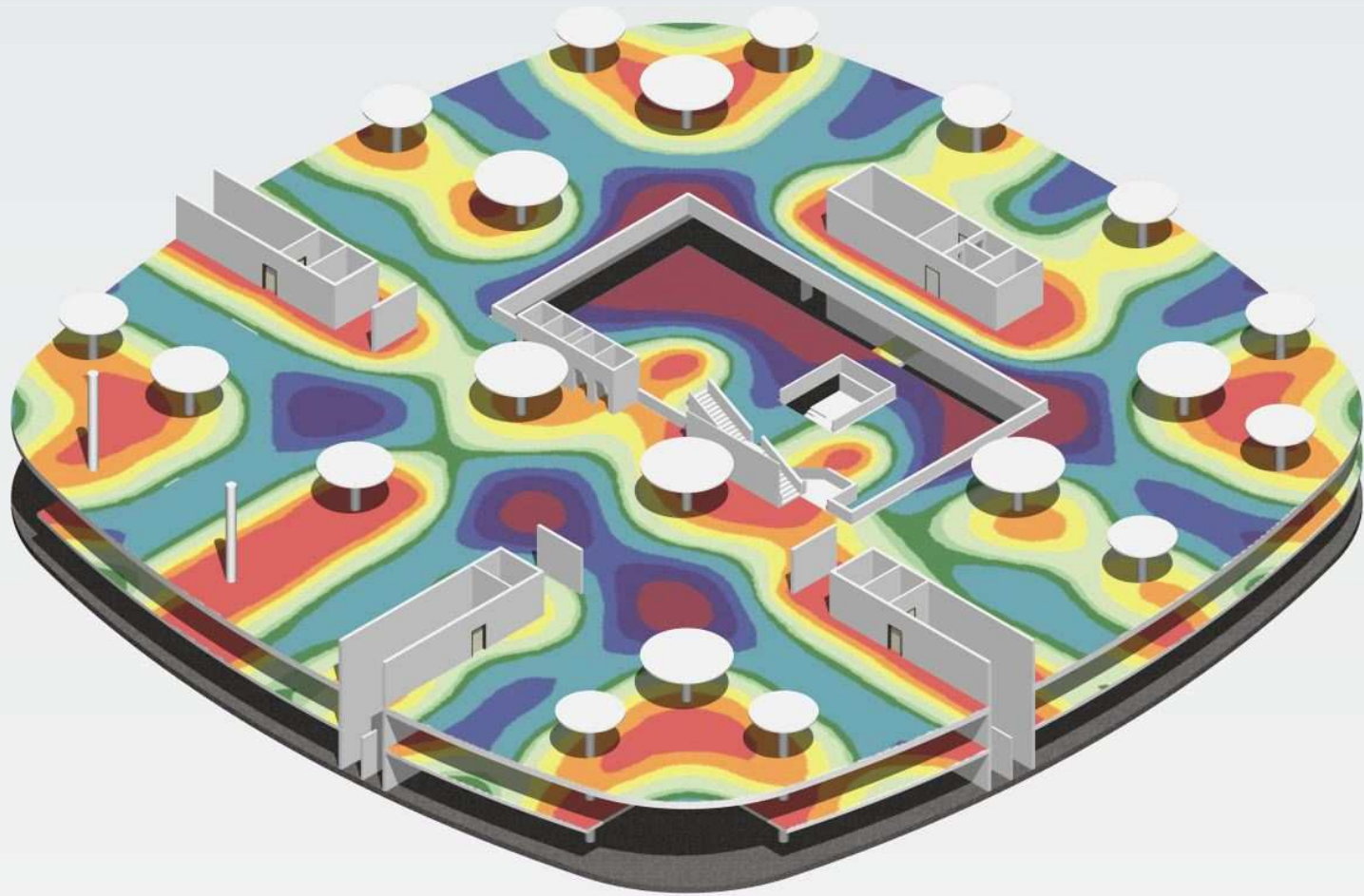
Nad 5np

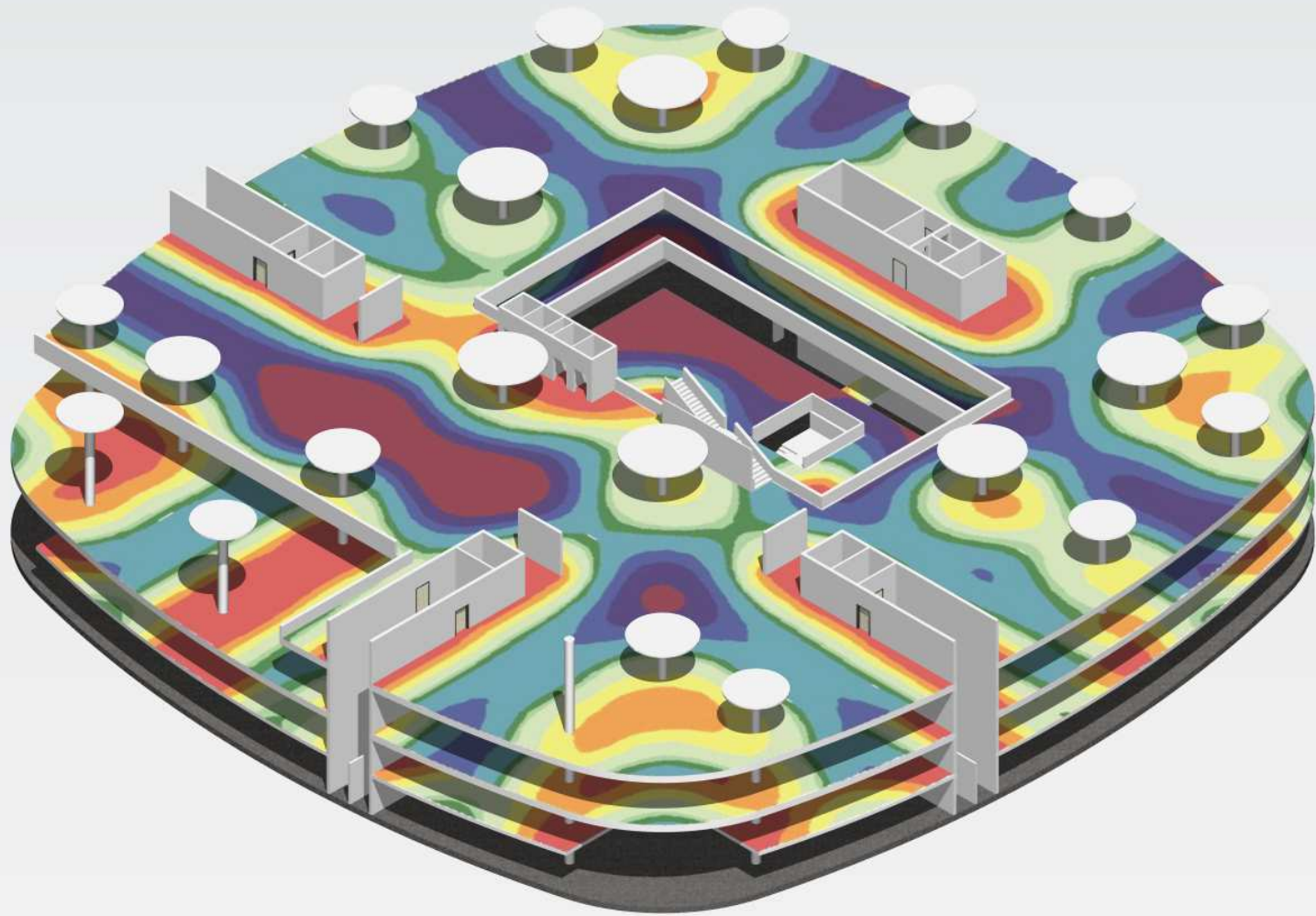


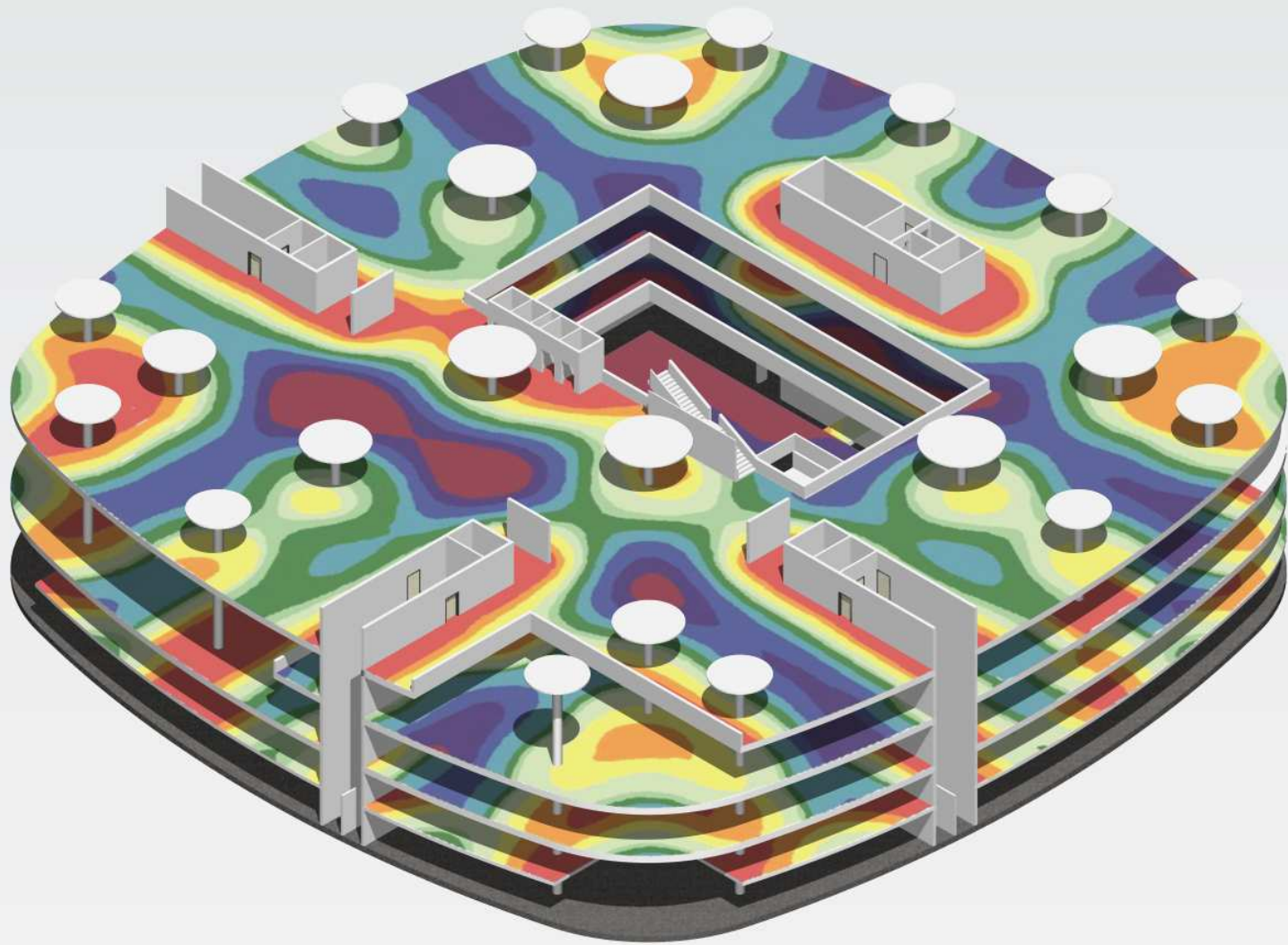
Nad 6np

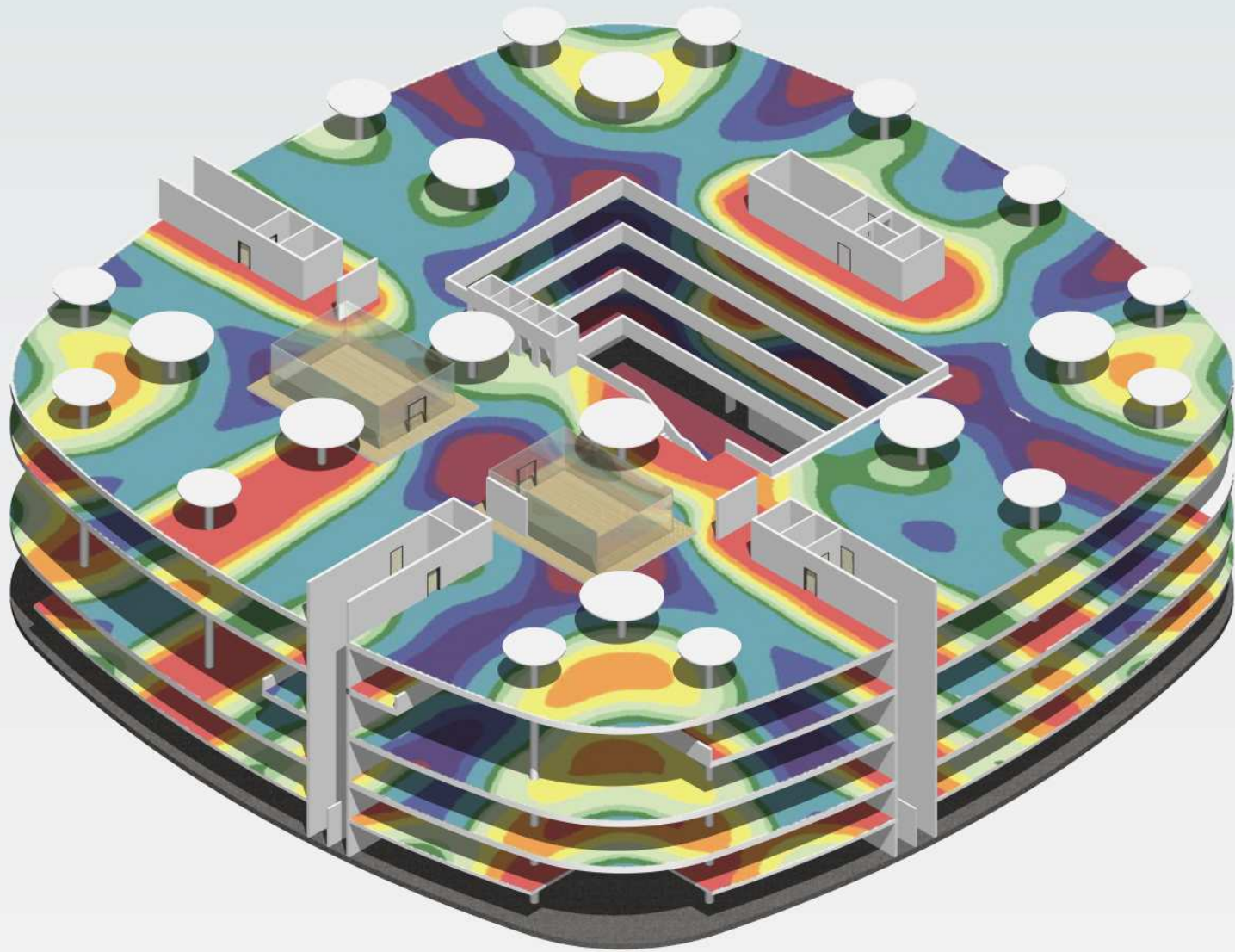


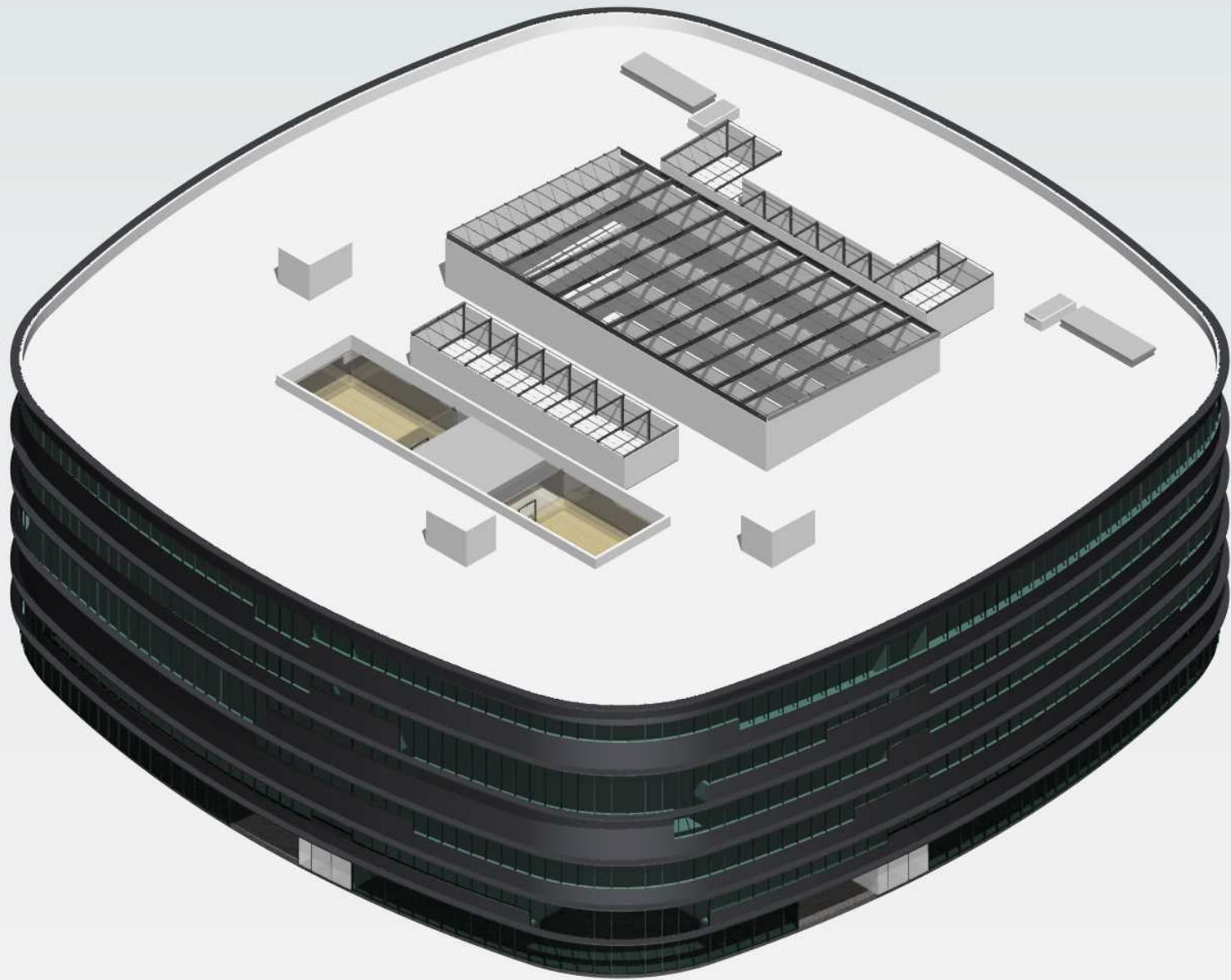


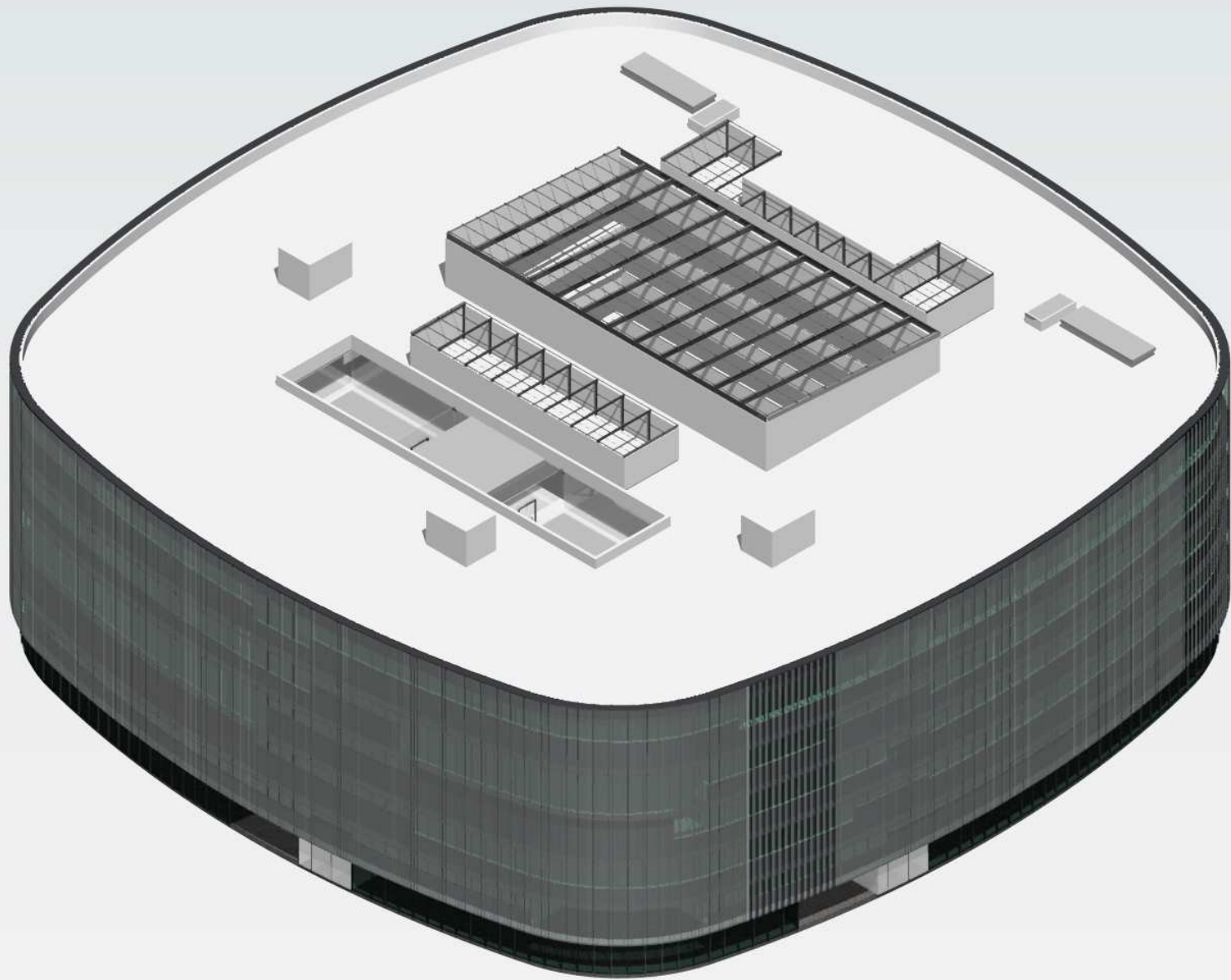


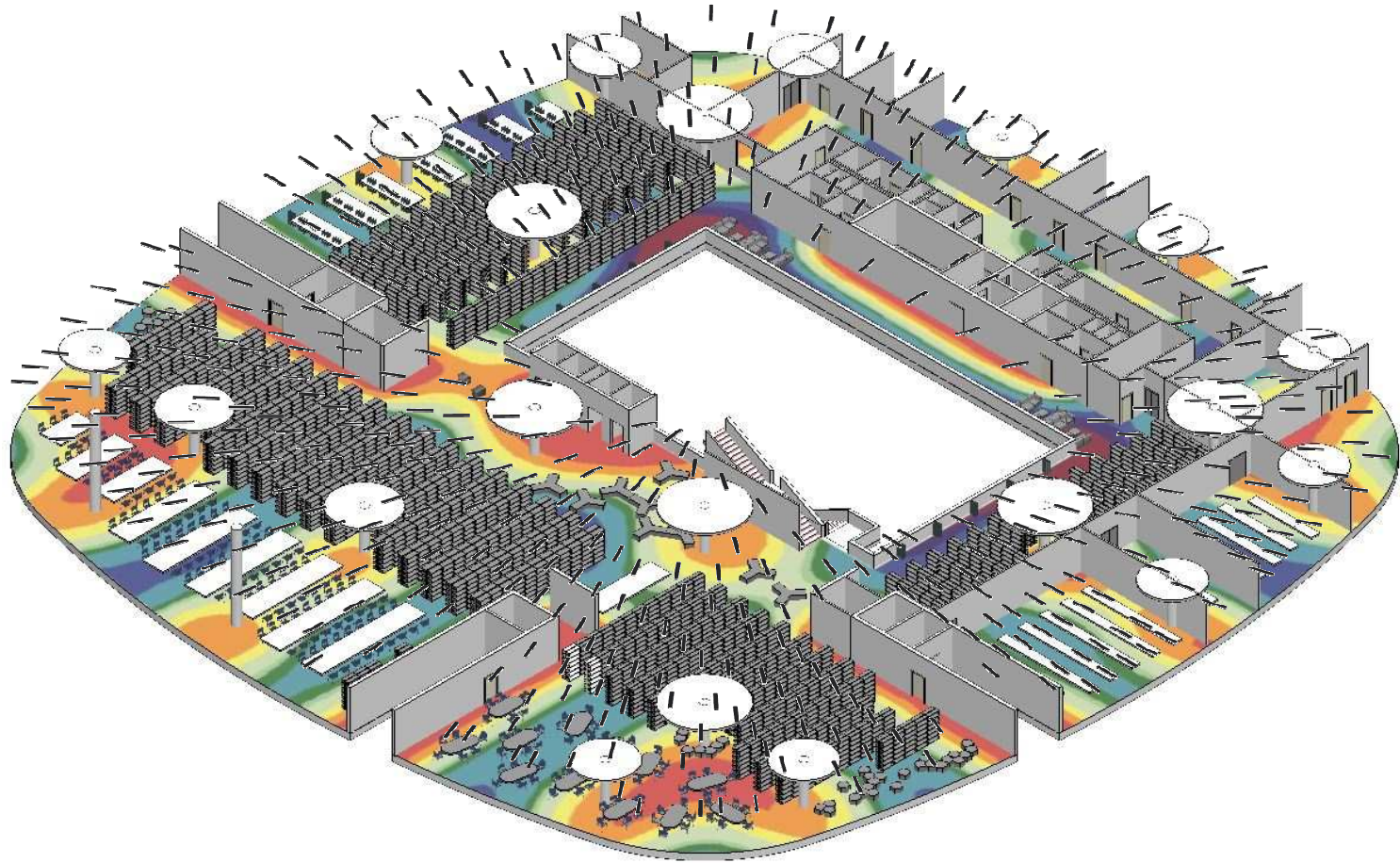










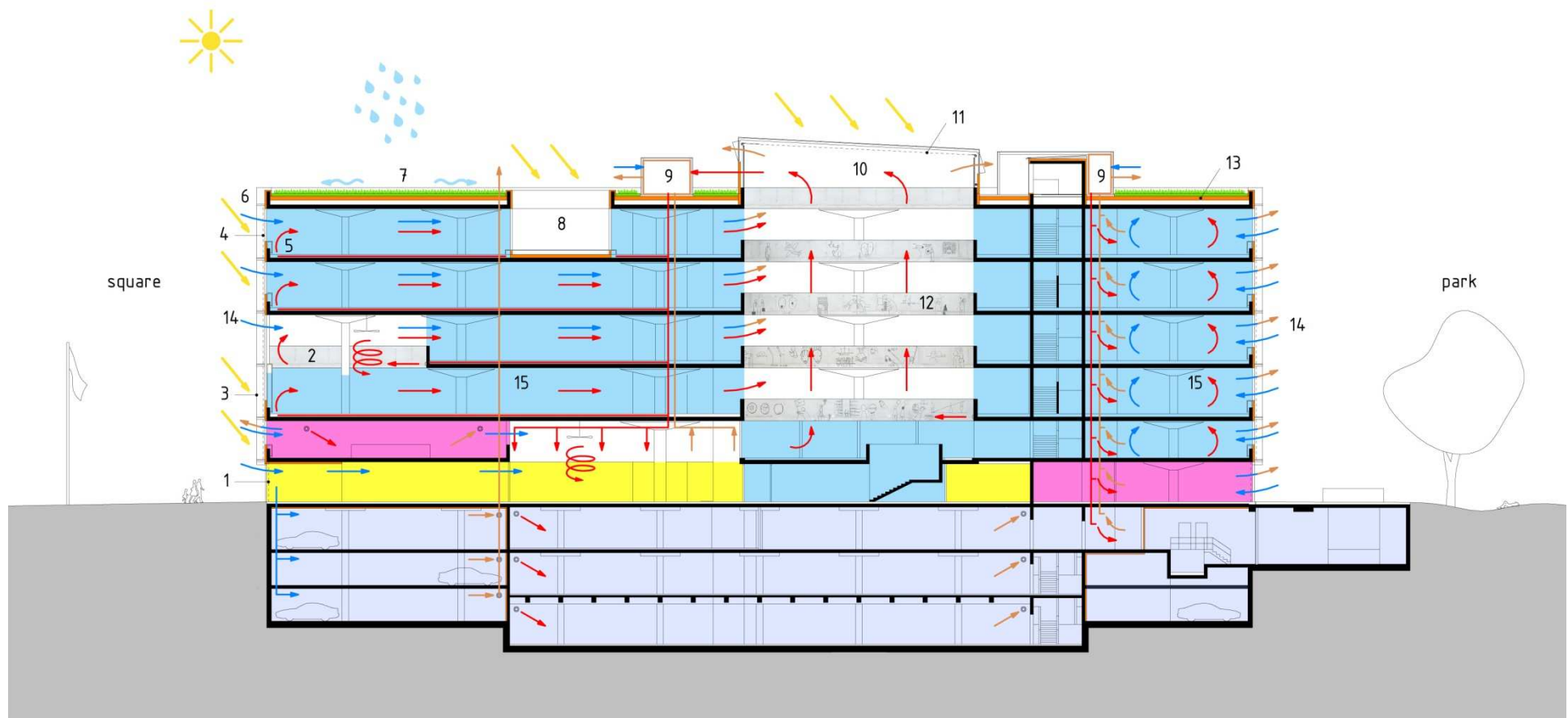




heating and cooling via concrete core activation



prestressed reinforcement



1 - internal adjustable shades reduce heat gain on 1st floor, while avoiding contact with pedestrians; 2 - materials used in their natural state; 3 - external glazing made of profiled glass protects adjustable shades against wind and provides light dispersion; 4 - a solar gain control - in summer, external adjustable shades reduce heat gain (sections divided according to cardinal points); during the transmission period and winter solar transmission heats the building; 5 - heating register; 6 - external air intake; 7 - extensive planting on a roof for drainage delay, protects thermal insulation and makes a nice view of roof from surrounding buildings; 8 - outdoor atrium for reading under the open sky; 9 - a ventilation unit with heat recuperation from exhaust air; 10 - elevated atrium with a space for accumulation and ventilation of warm air in summer; 11 - internal adjustable shades; 12 - excellent orientation system and art piece; 13 - effective thermal insulation; 14 - self-ventilation also used in summer for automatic nighttime pre-cooling of concrete structure; 15 - heating and cooling via concrete core activation

library
 spaces to let
 public space
 parking, technology and storage

schematic of energy-saving measures







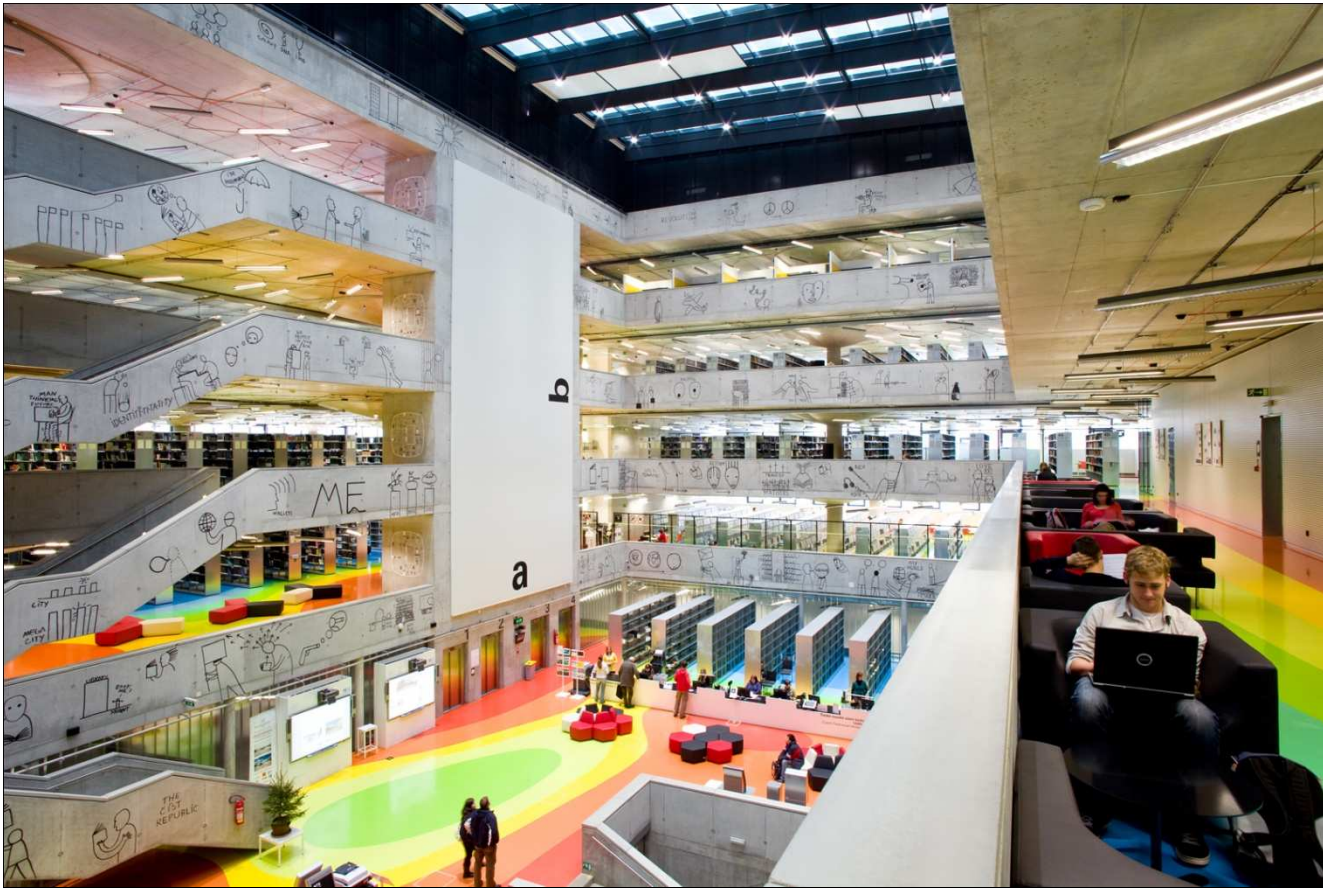


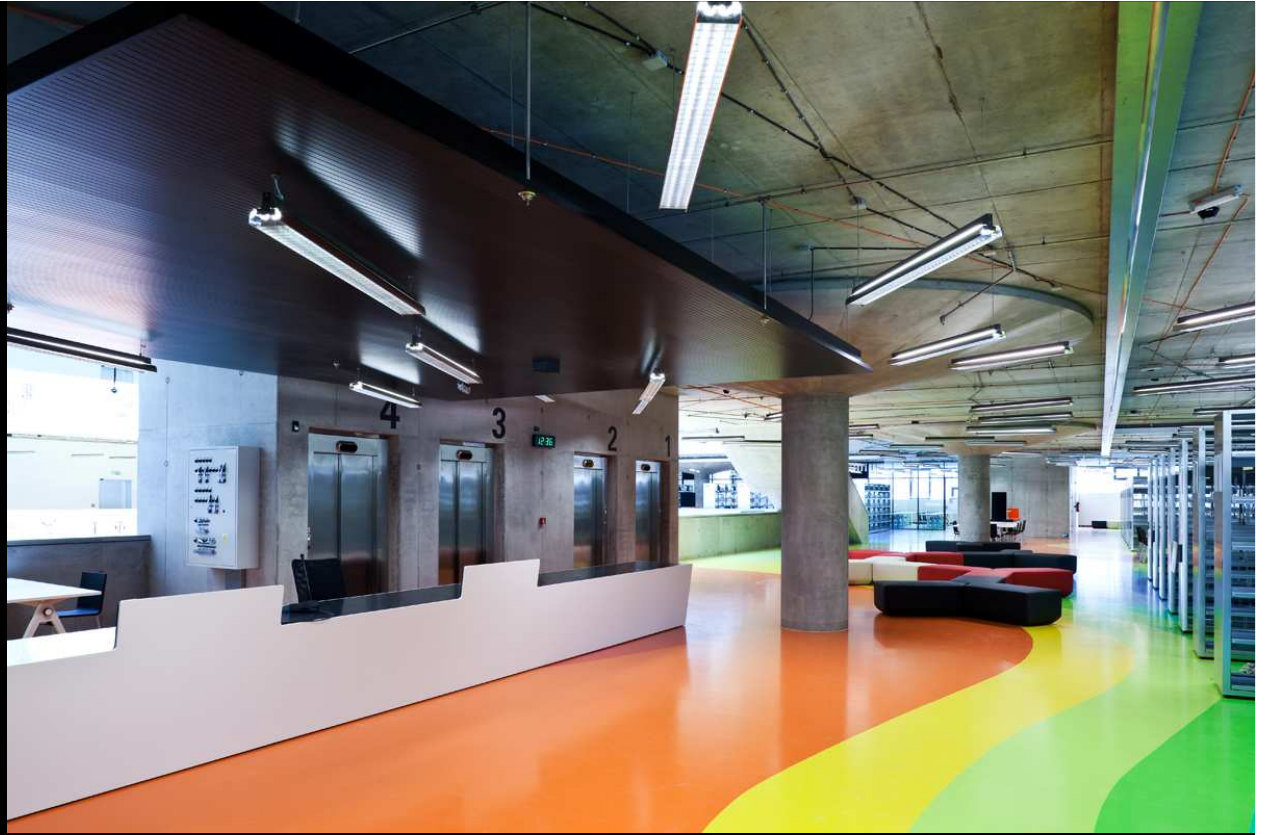


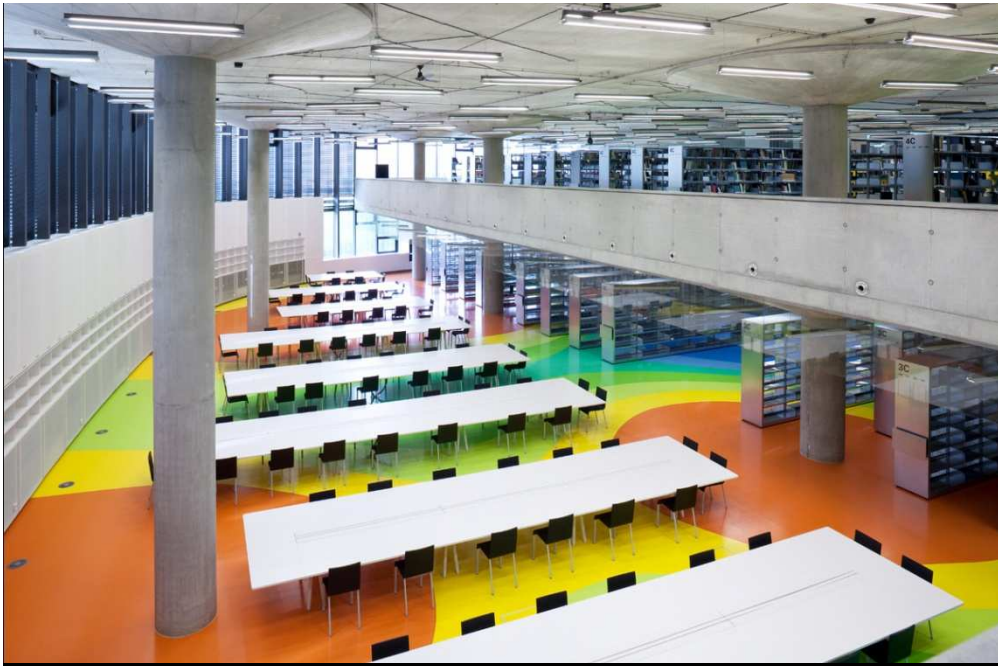


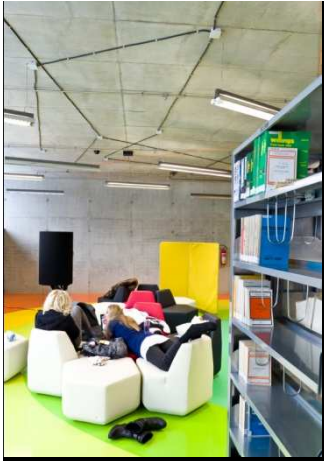


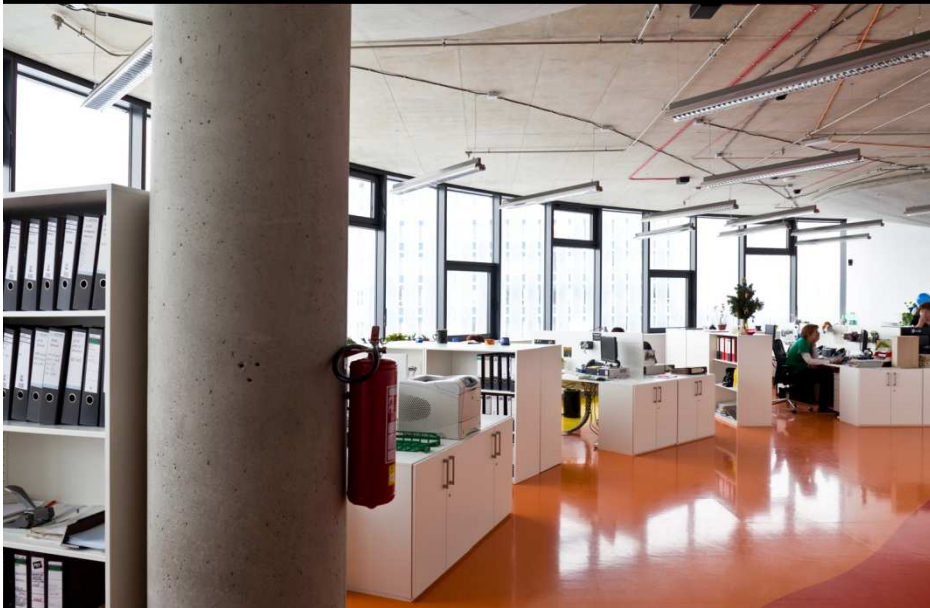


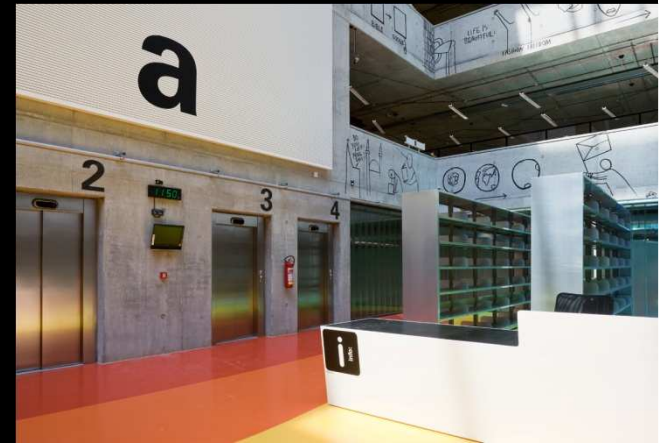
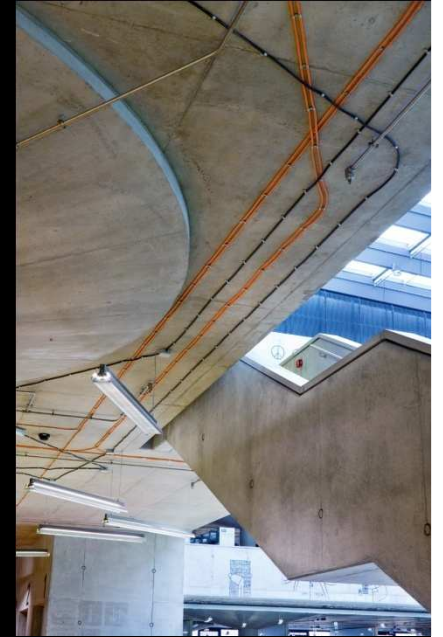












NTK

50°6'14.083"N, 14°23'26.365"E

Národní technická knihovna
National Technical Library

NT^{90°}K^{140°}

30°

Národní technická knihovna
National Technical Library

NTK

building size: 263x21m

Národní technická knihovna
National Technical Library

NT^{2,5x}K^{4,5x}

4x

x

Národní technická knihovna
National Technical Library

¹NT³K

10

Národní technická knihovna
National Technical Library

49

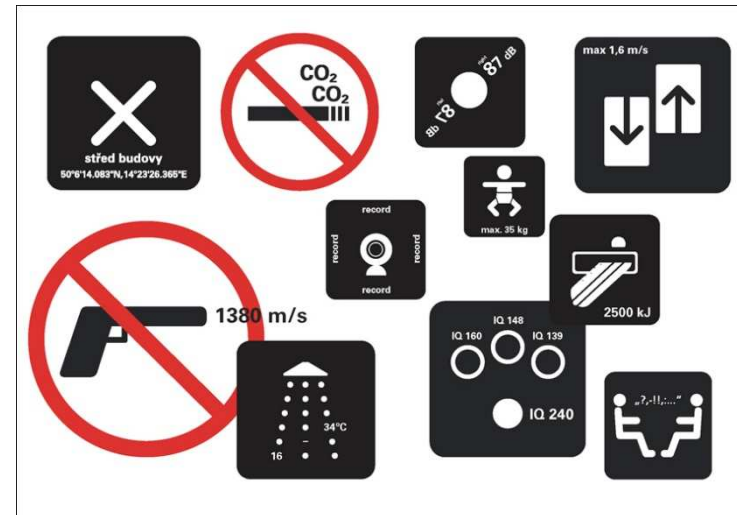
<http://www.techlib.cz>

NTK

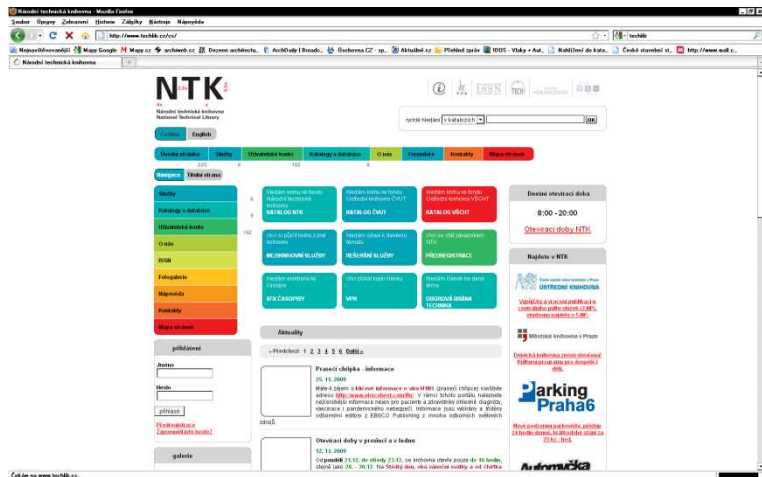
Národní technická knihovna
National Technical Library

NTK^{Univers}

Národní technická knihovna
National Technical Library



navigation system





Five art interventions in NTL

1. Central art piece

2. Web art piece

3. Art Monitor

4. Newsroom

5. Saga

Central art piece - Competition

Carsten Holler

Carsten Nicolai

Dan Perjovschi

Design

CARSTEN HÖLLER
National Technical Library, Prague
August 2008



© Carsten Höller

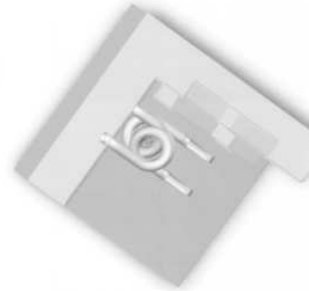
34

Visualization

CARSTEN HÖLLER
National Technical Library, Prague
August 2008



Elevation



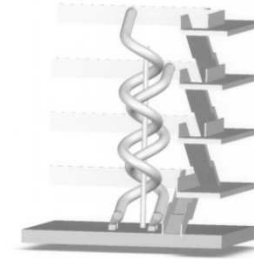
Plan view

© Carsten Höller

34

Visualization

CARSTEN HÖLLER
National Technical Library, Prague
August 2008



Elevations



© Carsten Höller

44

Carsten Holler



<http://www.youtube.com/watch?v=Ydqa-gYMSLs>

Carsten Nicolai

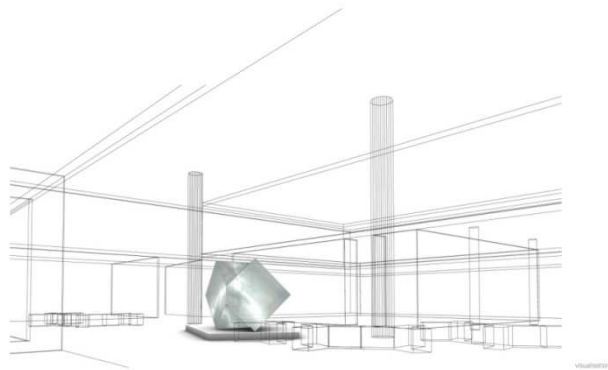
carsten nicolai - prager zwilling
2008 | proposal - sculpture for the technical library praha



carsten nicolai - prager zwilling
2008 | proposal - sculpture for the technical library praha



carsten nicolai - prager zwilling
2008 | proposal - sculpture for the technical library praha



carsten nicolai - prager zwilling
2008 | proposal - sculpture for the technical library praha

model 1/50



Carsten Nicolai

carsten nicolai . prager zwilling

2008

proposal . sculpture for the technical library praha

syn chron . 2004

lightweight structure, steel, aluminum,

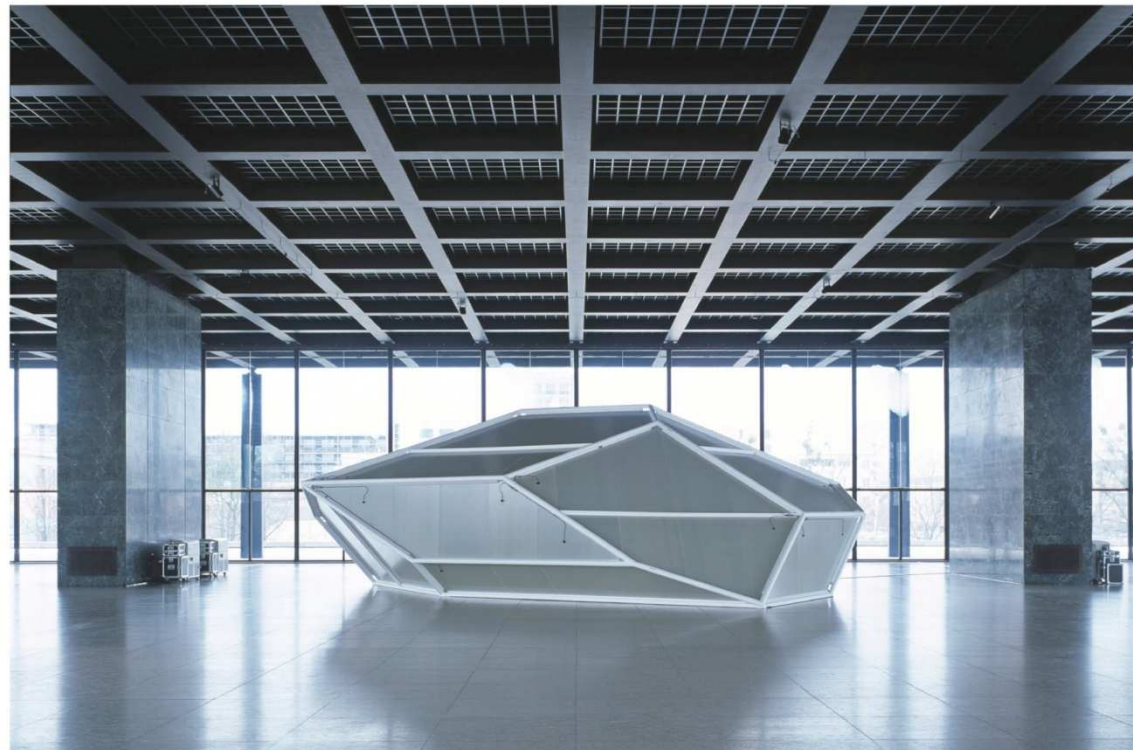
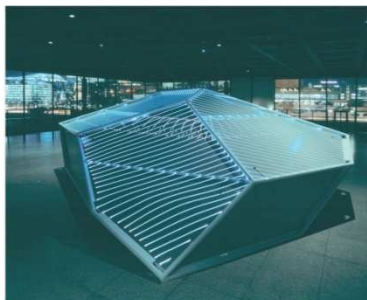
laser projection, sound system, rubber

1250 x 800 x 460cm

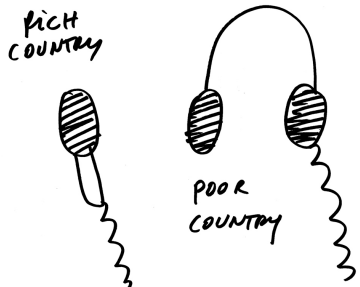
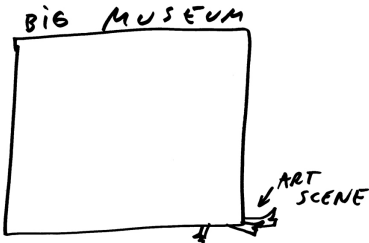
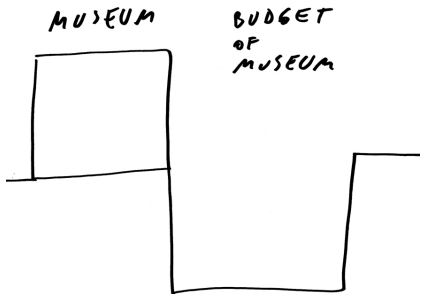
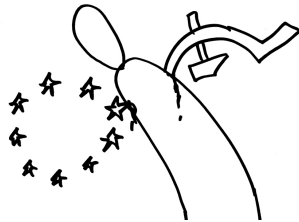
The intention of syn chron is to create an integral sculpture of light, sound and architecture. Additional to its function to define the spatial structure of the object the translucent skin of the accessible crystal-shaped body serves as an interface for a synchronized play of light and sound, both on the interior and exterior of the object.

The object at the same is a room for spatial experience, an acoustic resonance body, and a projection surface. The visitor is witness to an interplay of electronic sound – transmitted onto the surface of the crystal – and programmed laser beams that are visible both on the out- and the inside.

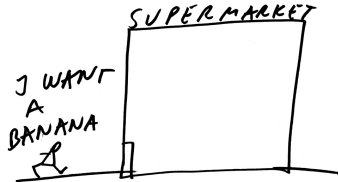
syn chron thereby creates an synaesthetic experience: in the inner, organic space of the human body the external signals of light and sound blend into each other to form a whole.



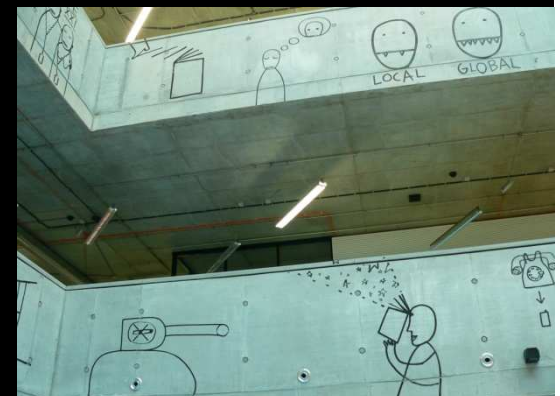
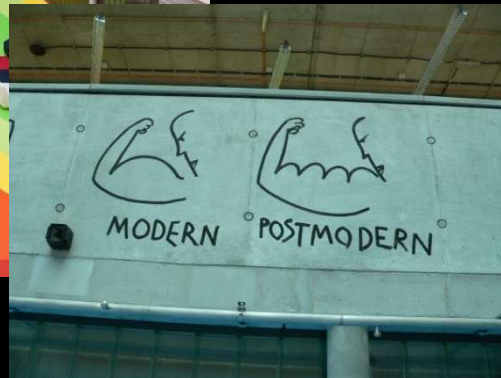
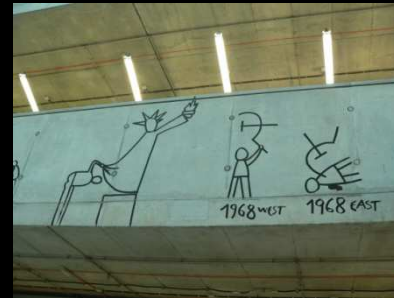
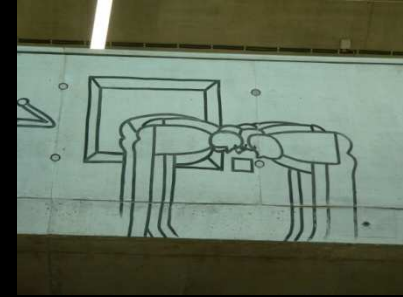
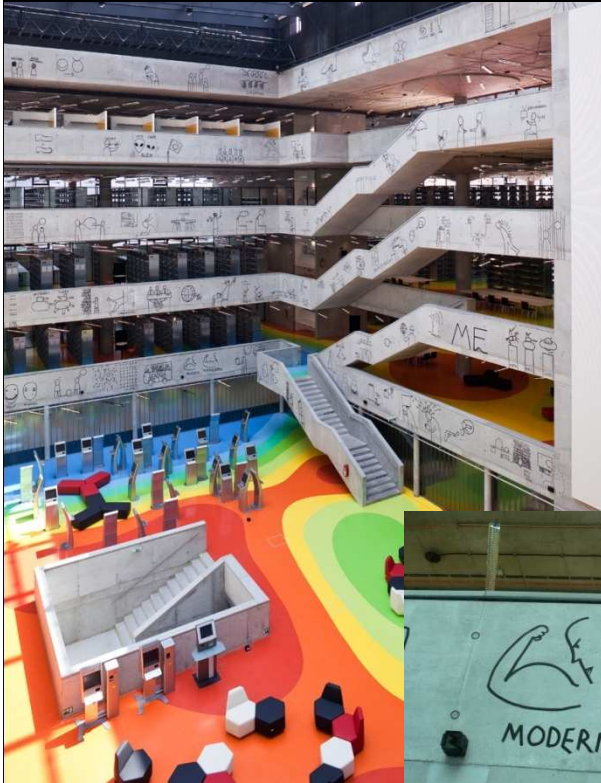
Dan Perjovschi



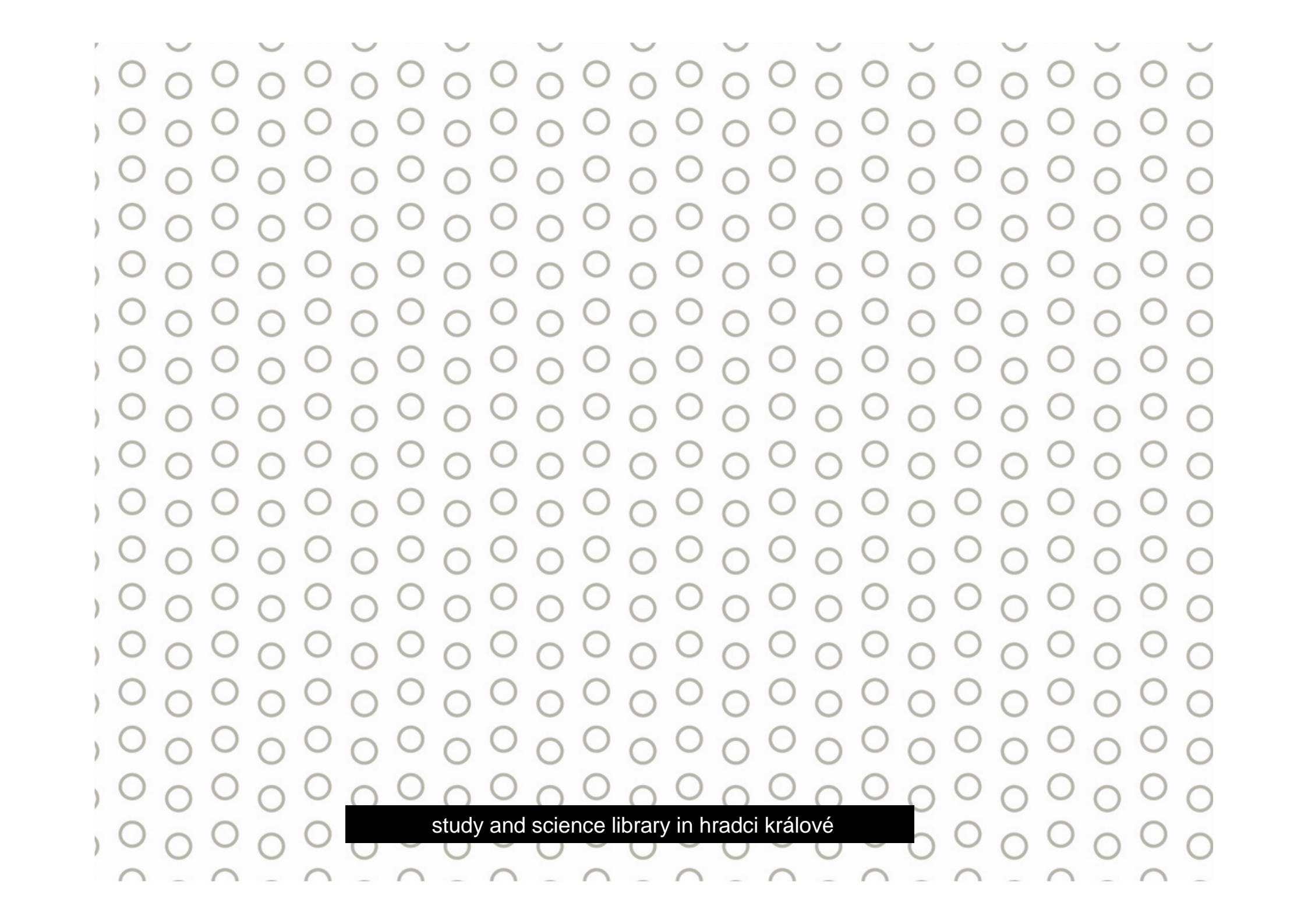
I AM A
POSTMODERN
EXCOMMUNIST



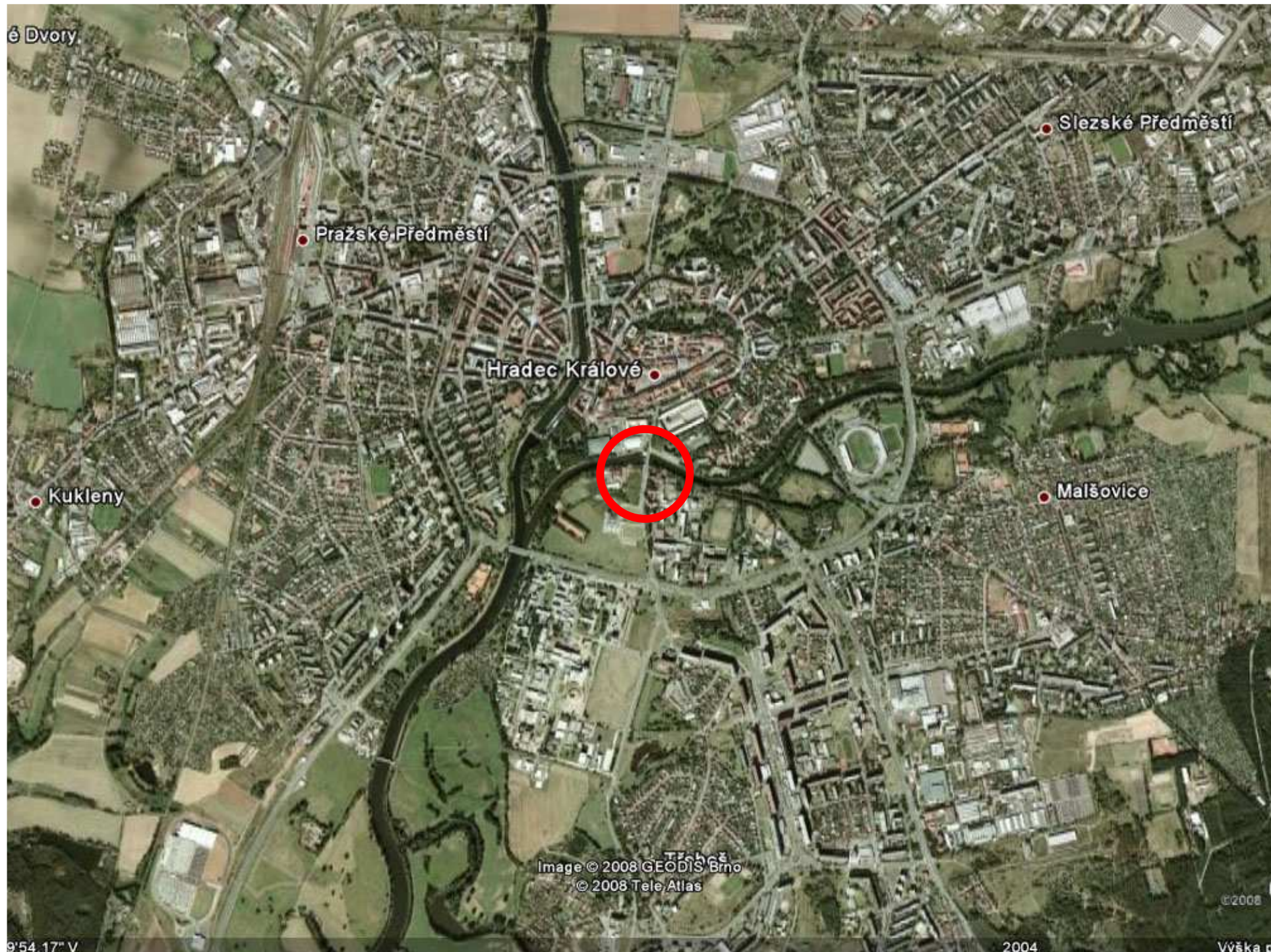
Dan Perjovschi



petr lešek_www.projektil.cz



study and science library in hradci králové



é Dvory

Slezské Předměstí

Pražské Předměstí

Hradec Králové

Kuklenny

Malšovice

Image © 2008 GEODIS Brno
© 2008 Tele Atlas

© 2008

9°54.17' V

2004

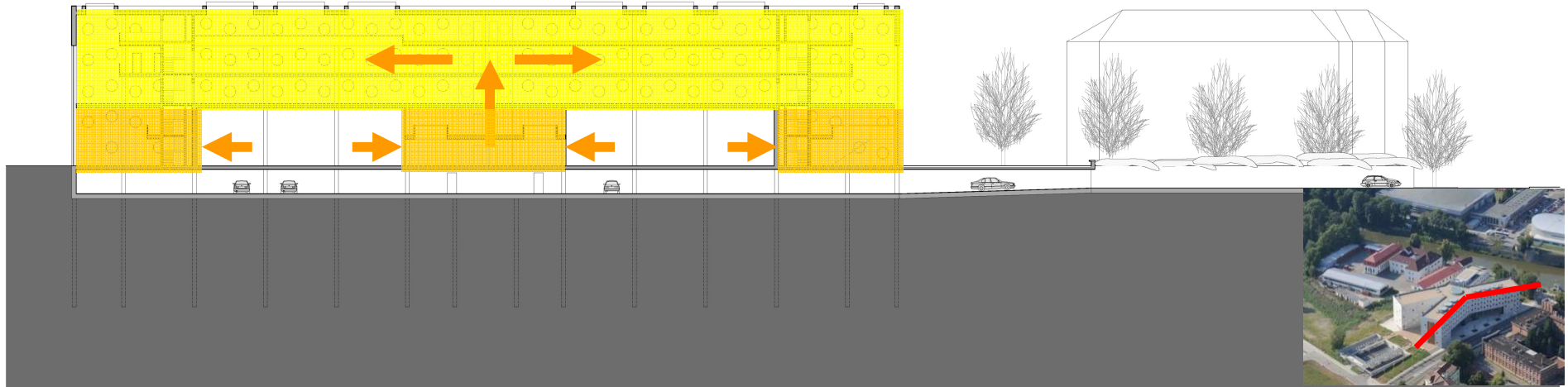
Výška p



Image © 2008 GEODIS Brno

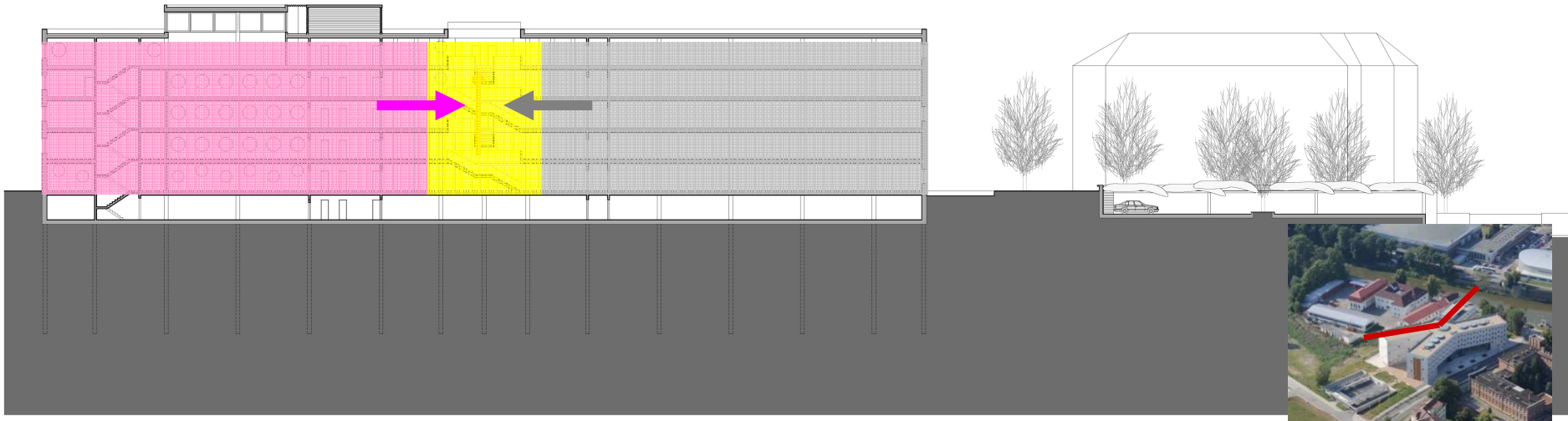
©200






50m


10m

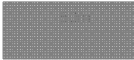


10m


study and shelves


entrance area


administration


storage

